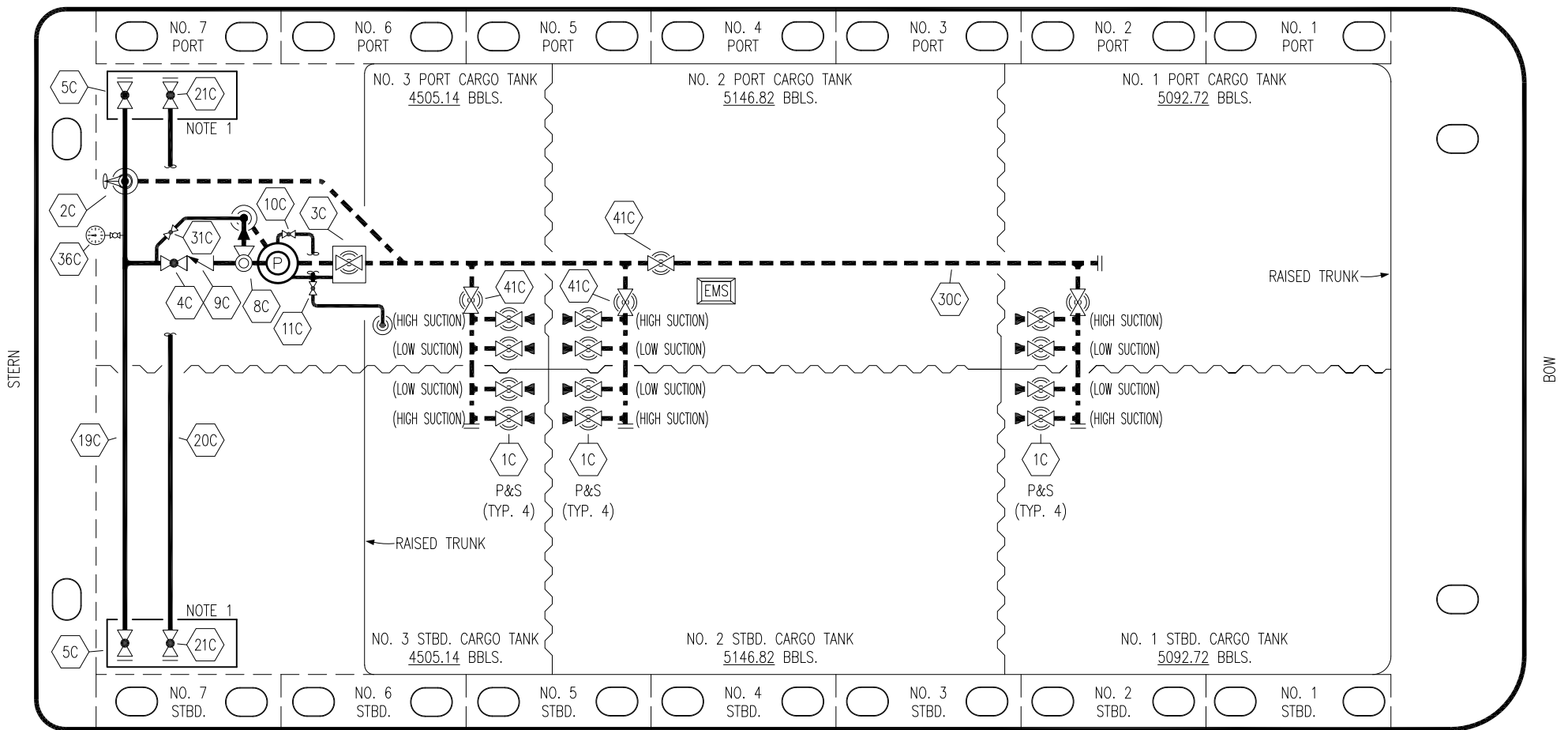


PORT



STERN

BOW

STARBOARD

NO	DESCRIPTION	NO	DESCRIPTION
1C	CARGO TANK VALVE	20C	DUMMY PIPELINE
2C	LOAD VALVE	21C	DUMMY HEADER VALVE
3C	MASTER SUCTION VALVE	30C	CARGO PIPELINE
4C	DISCHARGE VALVE	31C	BYPASS VALVE
5C	HEADER VALVE	36C	PRESSURE GAUGE
8C	RELIEF VALVE	37C	CARGO DROP
9C	CHECK VALVE	41C	SUCTION BLOCK VALVE
10C	BURP VALVE	—	— ABOVE DECK PIPING
11C	BLEED OFF VALVE	---	--- BELOW DECK PIPING
12C	BURP VALVE RETURN TO CARGO TANK		
19C	CARGO HEADER		

NOTE 1: CONTAINMENT P/S

EX: SMS 30037

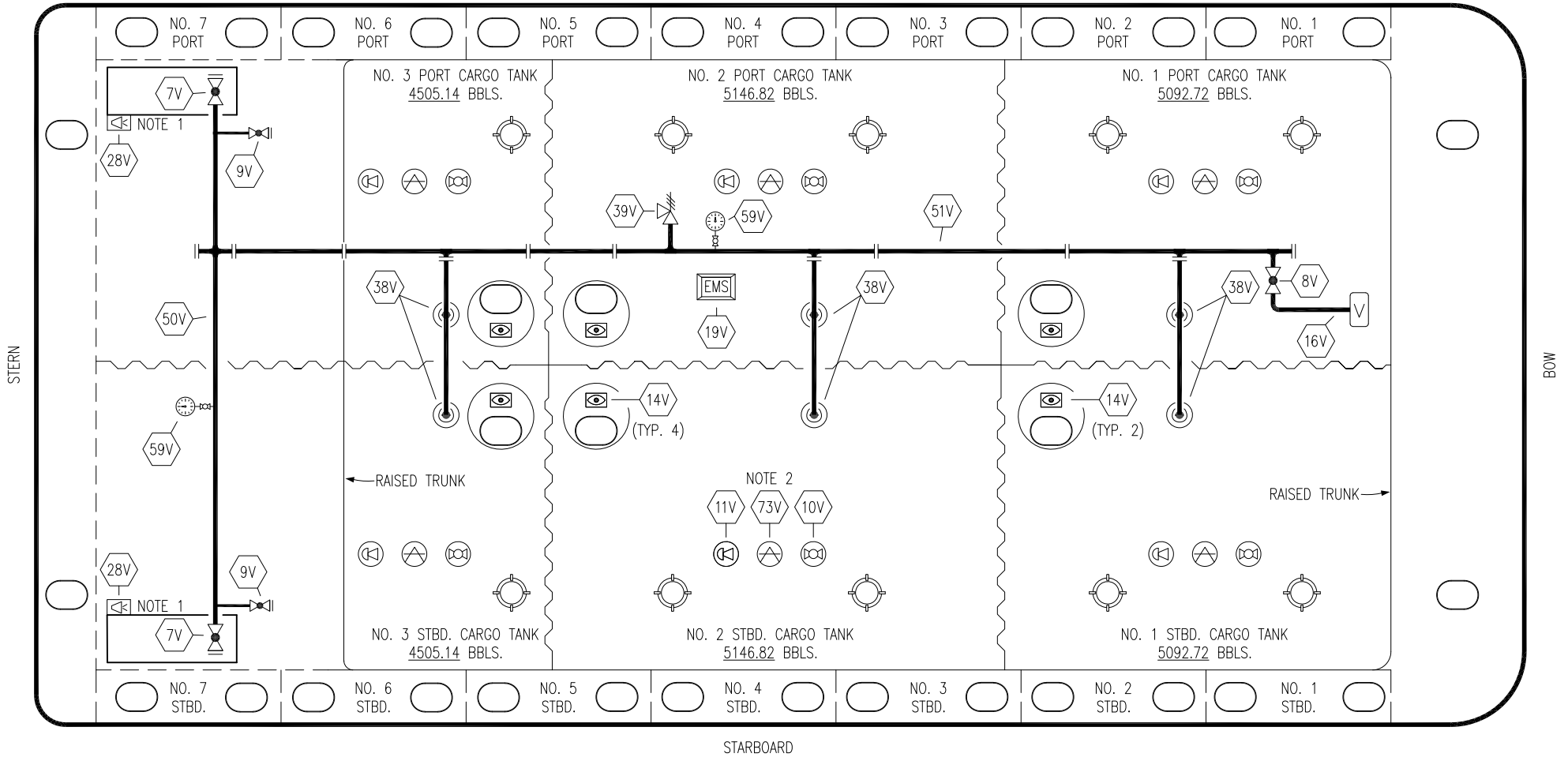
REV.	DATE	BY	CHK	APP	REVISION DESCRIPTION
1	06/08/22	MRV	DDA	MW	REVISED PER CLIENT COMMENTS
0	03/22/22	MRV	DDA	MW	ISSUED FOR APPROVAL

KIRBY INLAND MARINE

**CARGO
PIPING FLOW DIAGRAM**

SCALE: NONE
PAGE: 1 OF 2
KIRBY 30036 REV. **1**

PORT



STARBOARD

NO	DESCRIPTION	NO	DESCRIPTION
7V	8" HEADER VALVE	38V	8" VAPOR PENETRATION
8V	8" VENT STACK VALVE	39V	PRESSURE/VACUUM VALVE
9V	DRAIN VALVE	50V	8" VAPOR HEADER
10V	HIGH LEVEL/OVERFILL ALARM	51V	8" VAPOR PIPELINE
11V	1-METER GAUGE STICK	59V	PRESS/VAC GAUGE
16V	VAPOR VENT STACK	73V	MMC GAUGE POINT
19V	EMERGENCY ENGINE SHUT DOWN	—	ABOVE DECK PIPING
28V	DOCK CONNECTION ALARM		

NOTE 2: TYPICAL RIGGING IN EACH TANK

NOTE 1: CONTAINMENT P/S

EX: SMS 30037

1	06/08/22	MRV	DDA	MW	REVISED PER CLIENT COMMENTS	SCALE: NONE	
0	03/22/22	MRV	DDA	MW	ISSUED FOR APPROVAL	PAGE: 2 OF 2	
REV.	DATE	BY	CHK	APP	REVISION DESCRIPTION	KIRBY 30036	
						REV. 0	