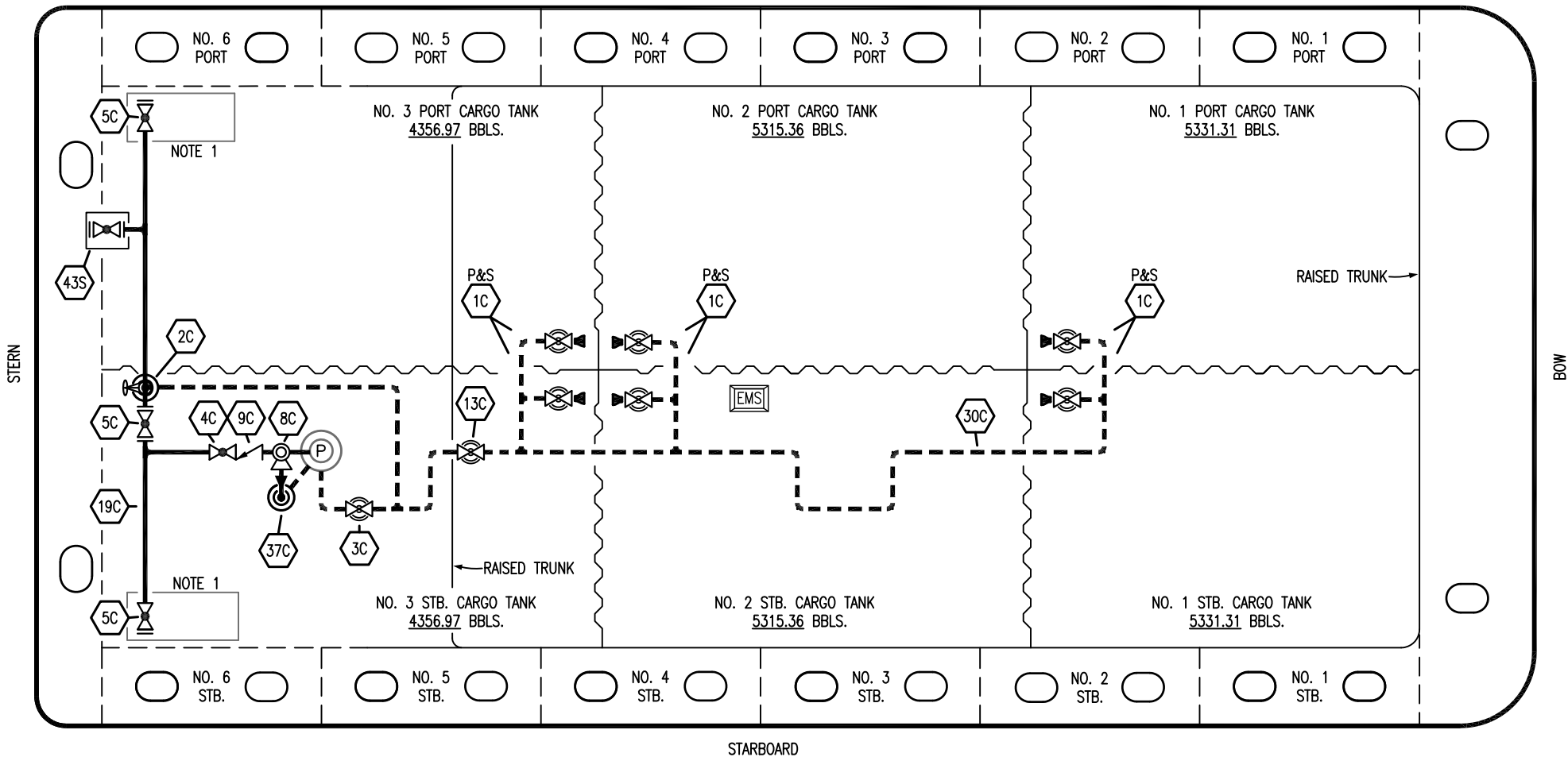





PORT



- | | | | |
|----|----------------------|---|--|
| NO | DESCRIPTION | NO | DESCRIPTION |
| 1C | CARGO TANK VALVE | 13C | CARGO PIPING BLOCK VALVE |
| 2C | LOAD VALVE | 19C | CARGO HEADER |
| 3C | MASTER SUCTION VALVE | 30C | CARGO PIPELINE |
| 4C | DISCHARGE VALVE | 37C | CARGO DROP  |
| 5C | HEADER VALVE | 43S | STERN HEADER VALVE |
| 8C | RELIEF VALVE |  | ABOVE DECK PIPING |
| 9C | CHECK VALVE |  | BELOW DECK PIPING |

NOTE 1: CONTAINMENT P/S

EX. ACT 102

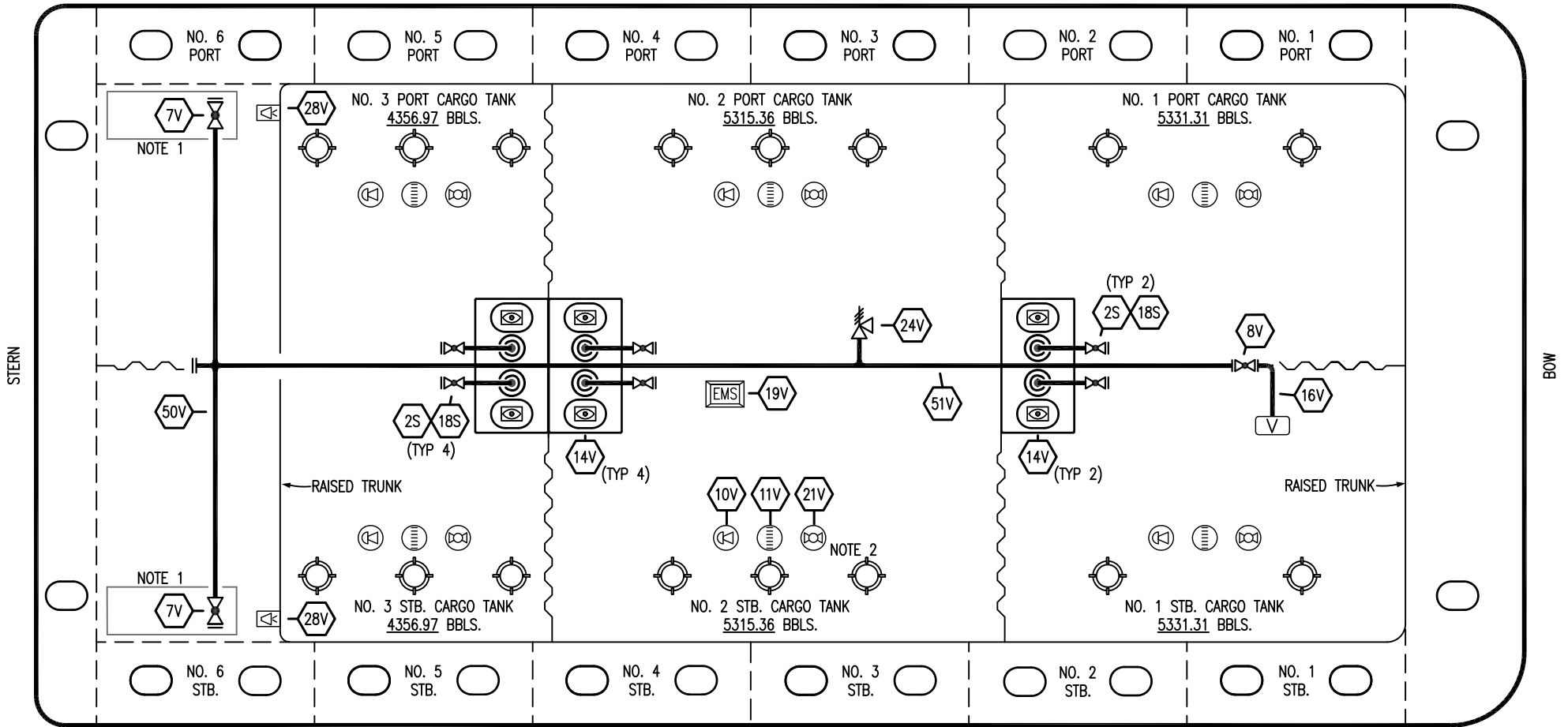
1	01/16/23	MRV	DDA	DL	REVISED PER CLIENT COMMENTS	
0	02/20/19	MRV	DDA		ISSUED FOR APPROVAL	
REV.	DATE	BY	CHK	APP	REVISION DESCRIPTION	

KIRBY INLAND MARINE 

**CARGO
PIPING FLOW DIAGRAM**

SCALE: NONE	KIRBY 30033	REV. 1
PAGE: 1 OF 3		

PORT



STERN

BOW

STARBOARD

NO	DESCRIPTION	NO	DESCRIPTION
7V	HEADER VALVE	24V	PRESSURE RELIEF VALVE
8V	VENT STACK VALVE	28V	DOCK CONNECTION ALARM
10V	HIGH LEVEL/OVERFILL ALARM	50V	VAPOR HEADER
11V	1-METER GAUGE STICK	51V	VAPOR PIPELINE
14V	SIGHT GLASS	2S	CARGO SUMP SUCTION VALVE
16V	VAPOR VENT STACK	18S	STRIPPING DROP
19V	EMERGENCY ENGINE SHUT DOWN	—	ABOVE DECK PIPING
21V	HERMETIC GAUGE		

NOTE 2: TYPICAL RIGGING IN EACH TANK

NOTE 1: CONTAINMENT P/S

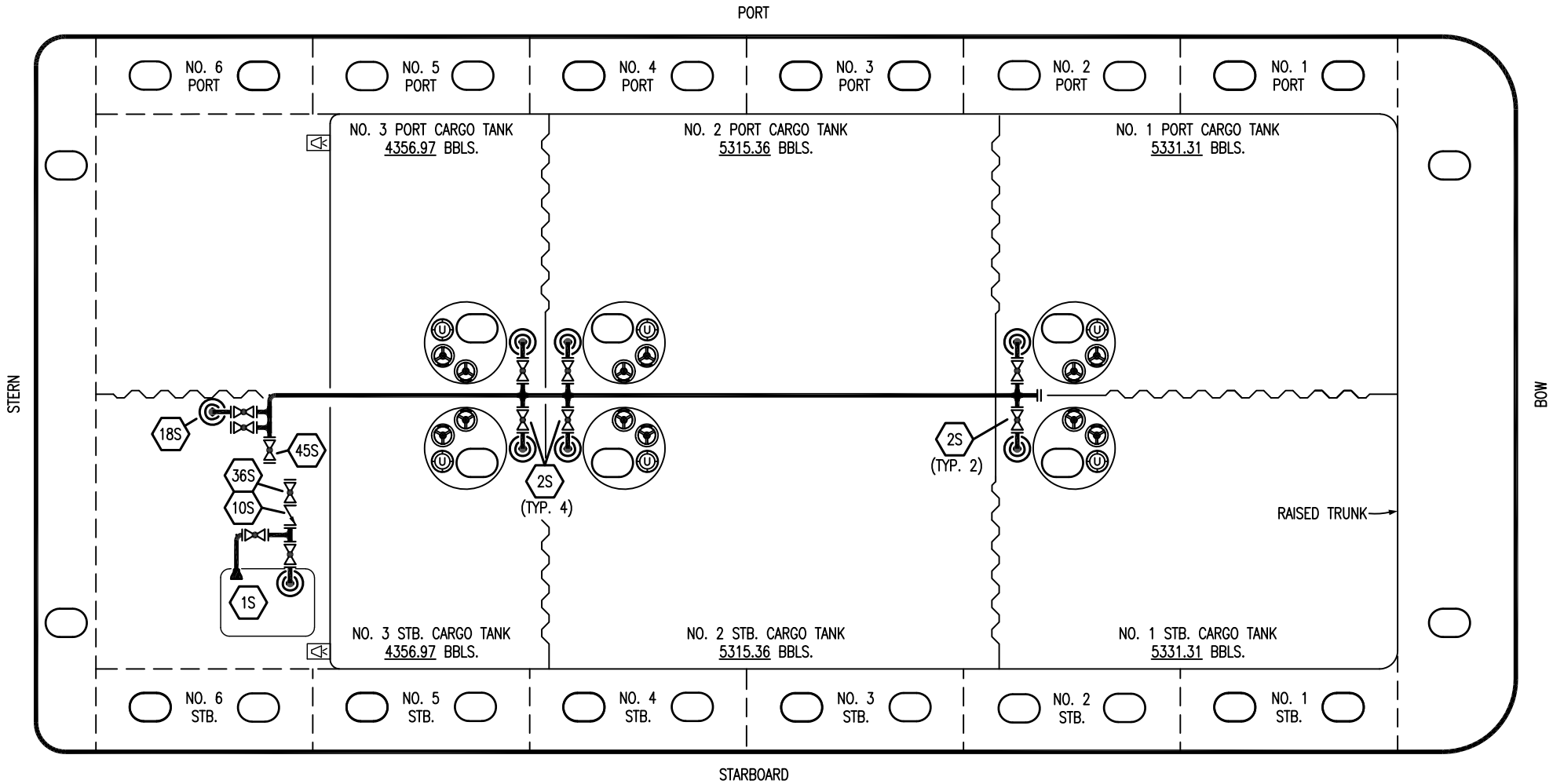
EX. ACT 102

REV.	DATE	BY	CHK	APP	REVISION DESCRIPTION
1	01/16/23	MRV	DDA	DL	REVISED PER CLIENT COMMENTS
0	02/20/19	MRV	DDA		ISSUED FOR APPROVAL

KIRBY INLAND MARINE

**VAPOR
PIPING FLOW DIAGRAM**

KIRBY 30033	REV. 1
SCALE: NONE	PAGE: 2 OF 3



- | NO | DESCRIPTION |
|-----|--------------------------------|
| 1S | SLOP TANK |
| 2S | CARGO SUMP SUCTION VALVE |
| 10S | SLOP TANK CHECK VALVE |
| 18S | STRIPPING DROP |
| 31S | CHECK VALVE |
| 36S | STRIPPING PUMP DISCHARGE VALVE |
| 45S | STRIPPING PUMP SUCTION VALVE |

EX. ACT 102

REV.	DATE	BY	CHK	APP	REVISION DESCRIPTION
1	01/16/23	MRV	DDA	MW	REVISED PER CLIENT COMMENTS
0	02/20/19	MRV	DDA		ISSUED FOR APPROVAL

KIRBY INLAND MARINE

STRIPPING
PIPING FLOW DIAGRAM

SCALE: NONE	KIRBY 30033
PAGE: 3 OF 3	REV. 1