


NO	SIZE	DESCRIPTION
2C	8"	LOAD VALVE
4C	8"	DISCHARGE VALVE
5C	8"	HEADER VALVE
6C	8"	SALVAGE VALVE
8C	8"	RELIEF VALVE
9C	8"	CHECK VALVE
10C	1"	BURP VALVE
11C	1"	BLEED OFF VALVE

NO	SIZE	DESCRIPTION
12C	1"	BURP VALVE RETURN TO CARGO TANK
13C	8"	CARGO PIPING BLOCK VALVE
14V	1"	SIGHT GLASS
19C	8"	CARGO HEADER
37C	8"	CARGO DROP
—		ABOVE DECK PIPING
---		BELOW DECK PIPING

NOTE 1: CONT. ON BELOW DECK CARGO DWG.  
 NOTE 2: CONTAINMENT PORT & STB.

WEST GULF MARINE



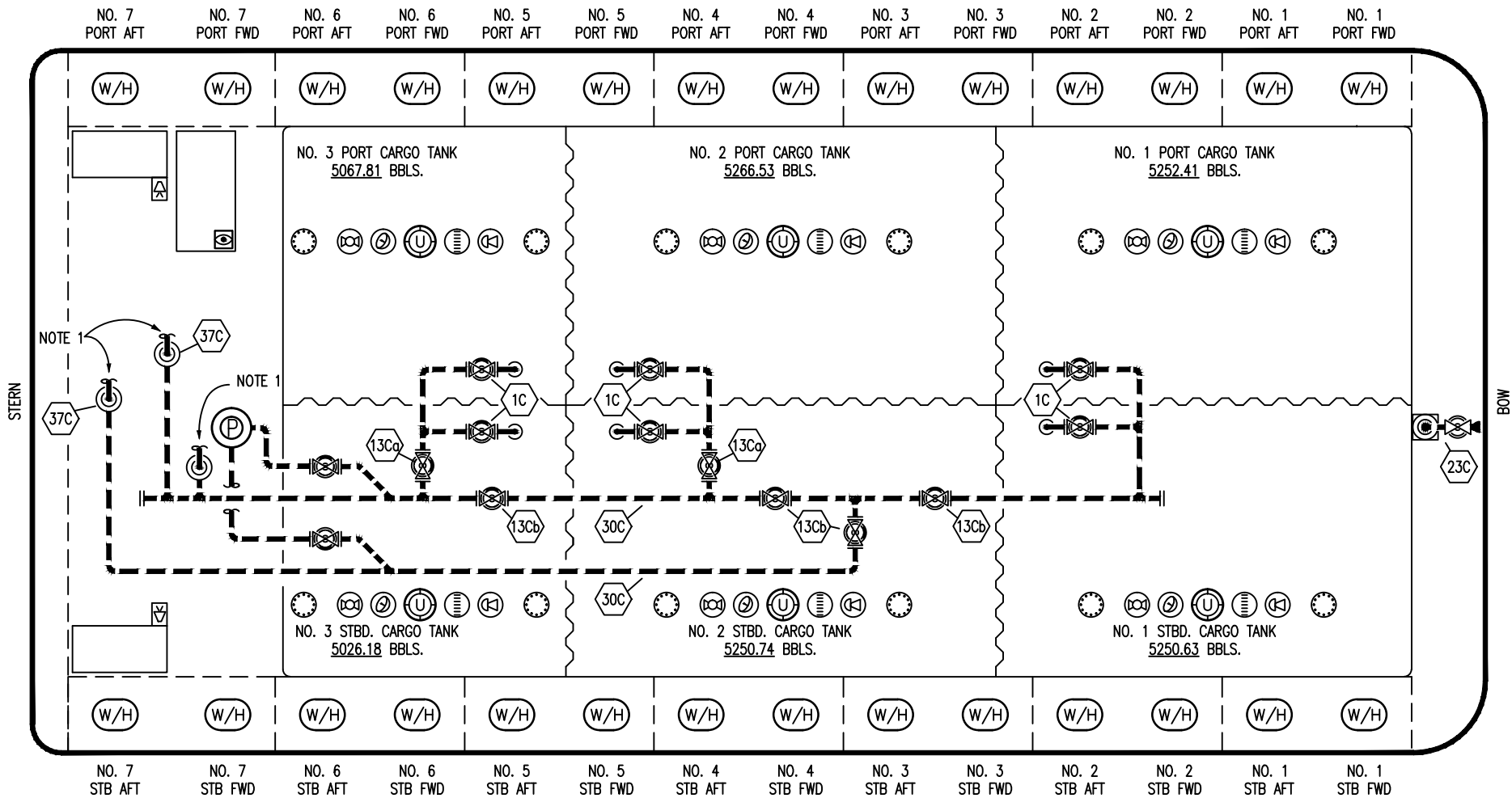
**KIRBY INLAND MARINE**

**ABOVE DECK CARGO  
PIPING FLOW DIAGRAM**

**KIRBY 30026B**

REV.	DATE	BY	CHK	APP	REVISION DESCRIPTION	SCALE: NONE	PAGE: 4 OF 4
							<b>1</b>

1	01/14/16	BB	DDA		REVISED PER CLIENT COMMENTS
0	02/02/09	WK	RB	OF	APPROVED



- | NO    | SIZE | DESCRIPTION              |
|-------|------|--------------------------|
| 1C    |      | CARGO TANK VALVE         |
| 3C    |      | MASTER SUCTION VALVE     |
| 13Ca  | 10"  | CARGO PIPING BLOCK VALVE |
| 13Cb  | 12"  | CARGO PIPING BLOCK VALVE |
| 14V   | 1"   | SIGHT GLASS              |
| 23C   |      | SEA CHEST BLOCK VALVE    |
| 30C   | 8"   | CARGO PIPELINE           |
| 37C   |      | CARGO DROP               |
| —     |      | ABOVE DECK PIPING        |
| - - - |      | BELOW DECK PIPING        |

NOTE 1: CONT. ON ABOVE DECK CARGO

WEST GULF MARINE

**KIRBY INLAND MARINE** 

**BELOW DECK CARGO  
PIPING FLOW DIAGRAM**

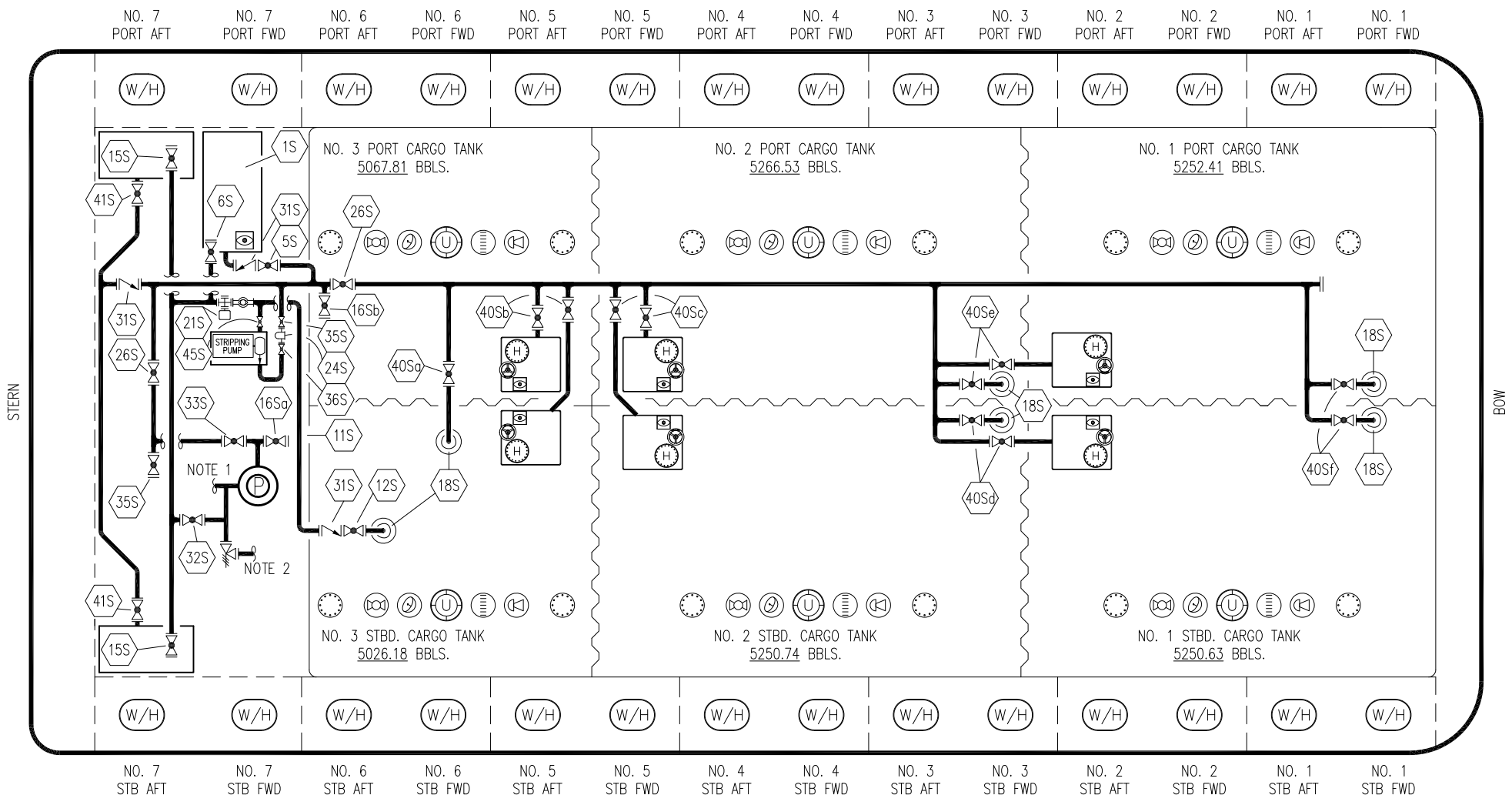
REV.	DATE	BY	CHK	APP	REVISION DESCRIPTION
1	01/27/15	DDA	DDA	OF	ADDED SEA CHEST VALVE
0	02/02/09	WK	RB	OF	APPROVED

SCALE: NONE  
PAGE: 1 OF 4

**KIRBY 30026B**

REV. 1





- |      |                             |      |                               |      |   |     |  |
|------|-----------------------------|------|-------------------------------|------|---|-----|--|
| NO   | DESCRIPTION                 | NO   | DESCRIPTION                   | NO   | DESCRIPTION                             | NO  | DESCRIPTION                              |
| 1S   | SLOP TANK, 3000 GALLONS     | 22S  | STRIPPING PUMP                | 40Sd | CARGO TANK SUCTION, NO. 2 P/S FWD. L.P. | 36S | STRIPPING PUMP DISCHARGE VALVE           |
| 5S   | SLOP TANK SUCTION VALVE     | 24S  | BASKET STRAINER               | 40Se | CARGO TANK SUCTION, NO. 1 P/S           | 45S | STRIPPING PUMP SUCTION VALVE             |
| 6S   | SLOP TANK FILL PIPING       | 26S  | STRIPPING HEADER BLOCK VALVE  | 40Sf | CARGO TANK SUCTION, NO. 1 P/S FWD. L.P. |     | NOTE 1: CONT. TO ABOVE DECK CARGO HEADER |
| 11S  | RETURN TO CARGO TANK PIPING | 31S  | CHECK VALVE                   | 41S  | CONTAINMENT SUCTION                     |     | NOTE 2: CONT. TO BELOW DECK CARGO        |
| 12S  | RETURN TO CARGO TANK VALVE  | 32S  | PUMP WELL PRIMER VALVE        |      |   |     | ABOVE DECK PIPING ———                    |
| 14S  | VALVE DISCHARGE             | 33S  | PUMP WELL SUCTION             |      |   |     | BELOW DECK PIPING - - -                  |
| 15S  | DISCHARGE HEADER VALVE      | 35S  | STRIPPING VALVE               |      |   |     |  |
| 16Sa | REMOTE SUCTION CONNECTION   | 40Sa | CARGO TANK SUCTION, MAIN      |      |   |     |  |
| 16Sb | REMOTE SUCTION CONNECTION   | 40Sb | CARGO TANK SUCTION, NO. 3 P/S |      |   |     |  |
| 21S  | PRIMING POT W/ SIGHT GLASS  | 40Sc | CARGO TANK SUCTION, NO. 2 P/S |      |   |     |  |

WEST GULF MARINE

1	05/21/19	NRB	DDA		REVISED PER CLIENT COMMENTS
0	02/02/09	WK	RB	OF	APPROVED
REV.	DATE	BY	CHK	APP	REVISION DESCRIPTION

**KIRBY INLAND MARINE**

**STRIPPING  
PIPING FLOW DIAGRAM**

SCALE: NONE	<b>KIRBY 30026B</b>	<b>REV. 1</b>
PAGE: 3 OF 4		