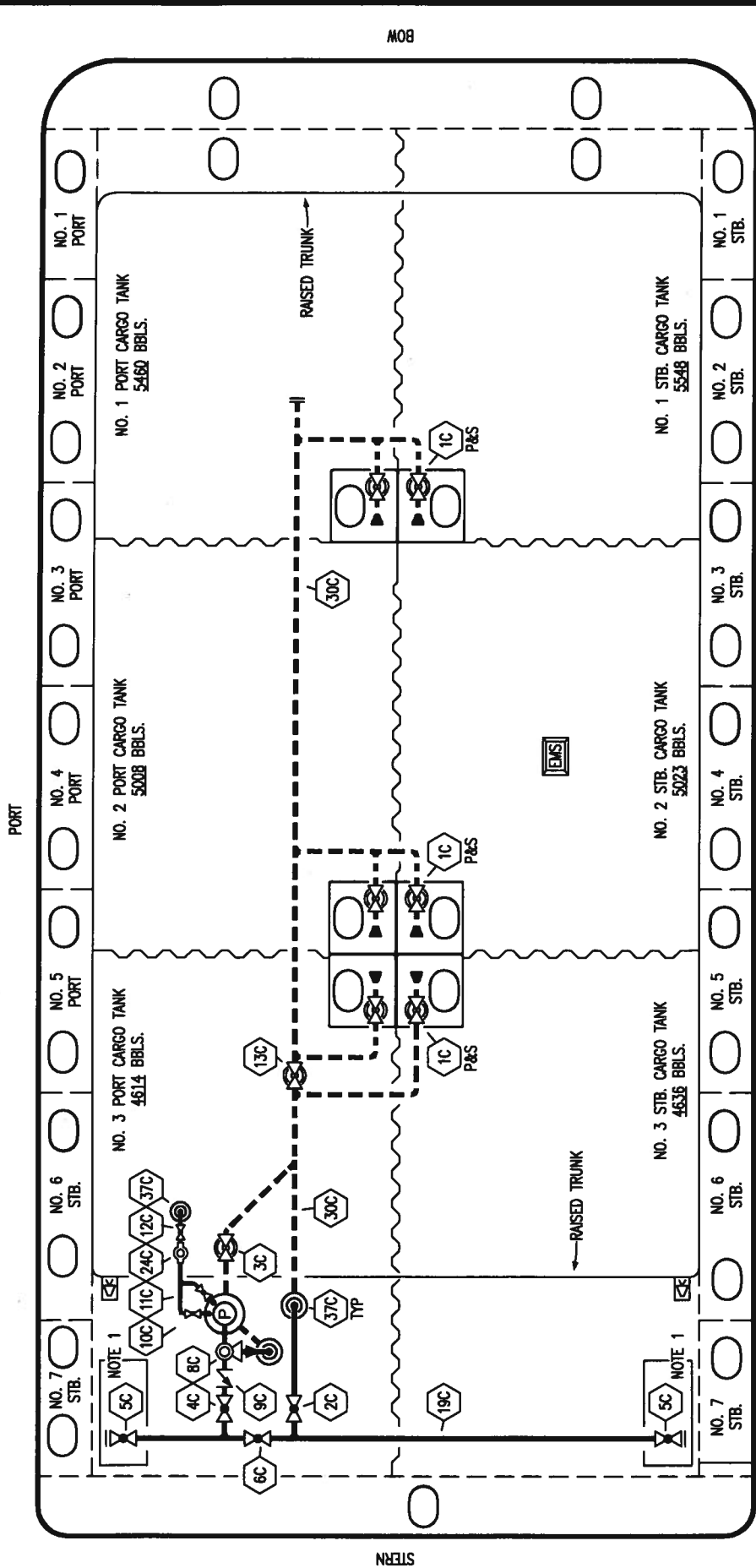


BOW



STERN

TRINITY-PLATZER SHIPYARD - EX: DXE 3059T



KIRBY INLAND MARINE

CARGO

PIPING FLOW DIAGRAM

SCALE: NONE
PAGE: 1 OF 3
REV. 0

STARBOARD

- | | |
|-----|---------------------------------|
| NO | DESCRIPTION |
| 1C | CARGO TANK VALVE |
| 2C | LOAD VALVE |
| 3C | MASTER SUCTION VALVE |
| 4C | DISCHARGE VALVE |
| 5C | HEADER VALVE |
| 6C | SALVAGE VALVE |
| 8C | RELIEF VALVE |
| 9C | CHECK VALVE |
| 10C | BURP VALVE |
| 11C | BLEED OFF VALVE |
| 12C | BURP VALVE RETURN TO CARGO TANK |
| 13C | CARGO PIPING BLOCK VALVE |
| 19C | CARGO HEADER |
| 24C | PIPE SIGHT GLASS |
| 30C | CARGO PIPELINE |
| 37C | CARGO DROP |
| --- | ABOVE DECK PIPING |
| --- | BELOW DECK PIPING |

NOTE 1: CONTAINMENT P/S

REV.	DATE	BY	CHK APP	REVISION	DESCRIPTION
0	03/15/10	RB	OF	APPROVED	

NO. 1 PORT

NO. 1 STB.

NO. 2 PORT

NO. 2 STB.

NO. 3 PORT

NO. 3 STB.

NO. 4 PORT

NO. 4 STB.

NO. 5 PORT

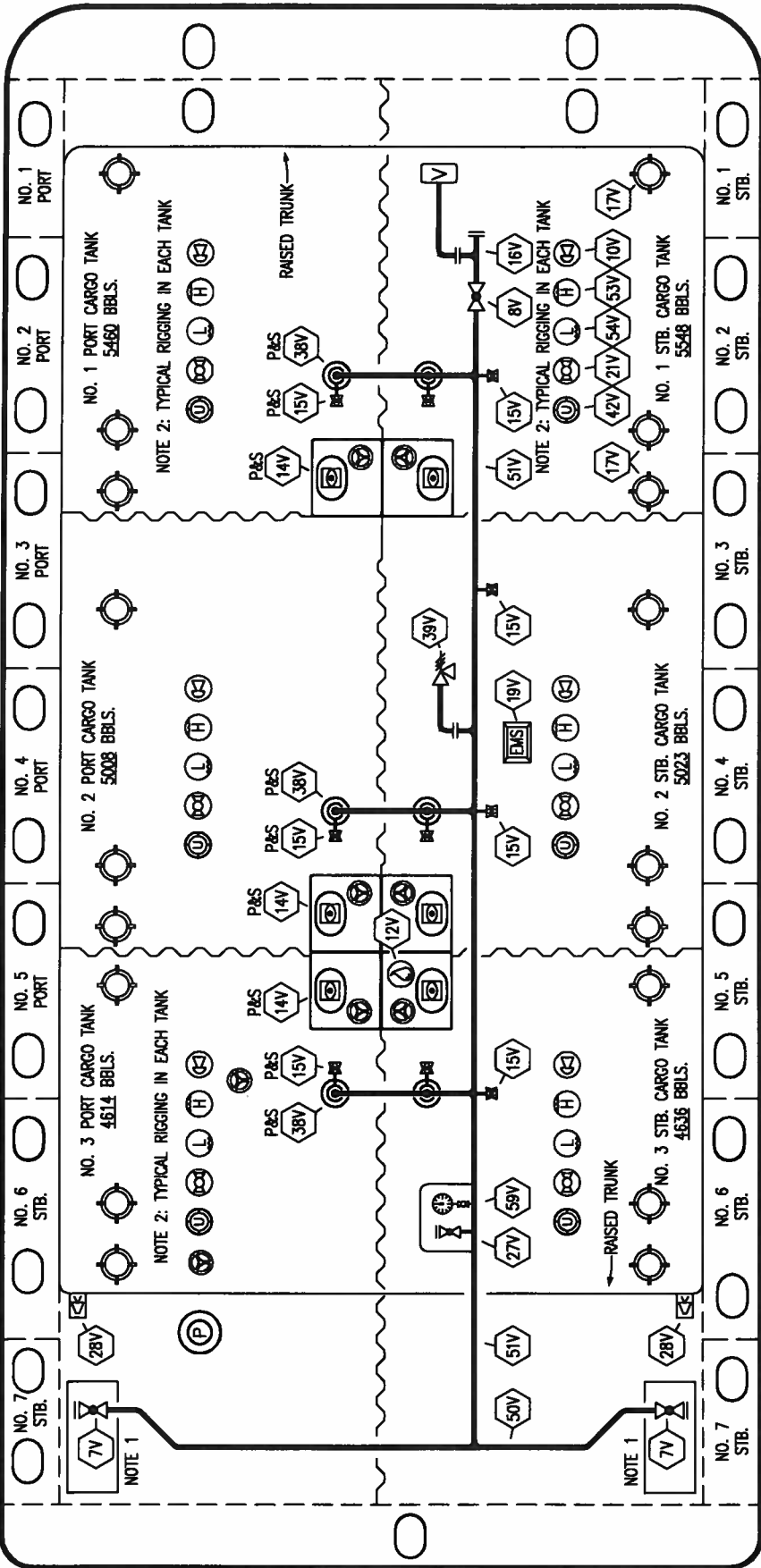
NO. 5 STB.

NO. 6 PORT

NO. 6 STB.

NO. 7 STB.

NO. 7 STB.



TRINITY-PLATZER SHIPYARD - EX: DXE 3059T



KIRBY INLAND MARINE

VAPOR

PIPING FLOW DIAGRAM

SCALE: NONE
PAGE: 2 OF 3

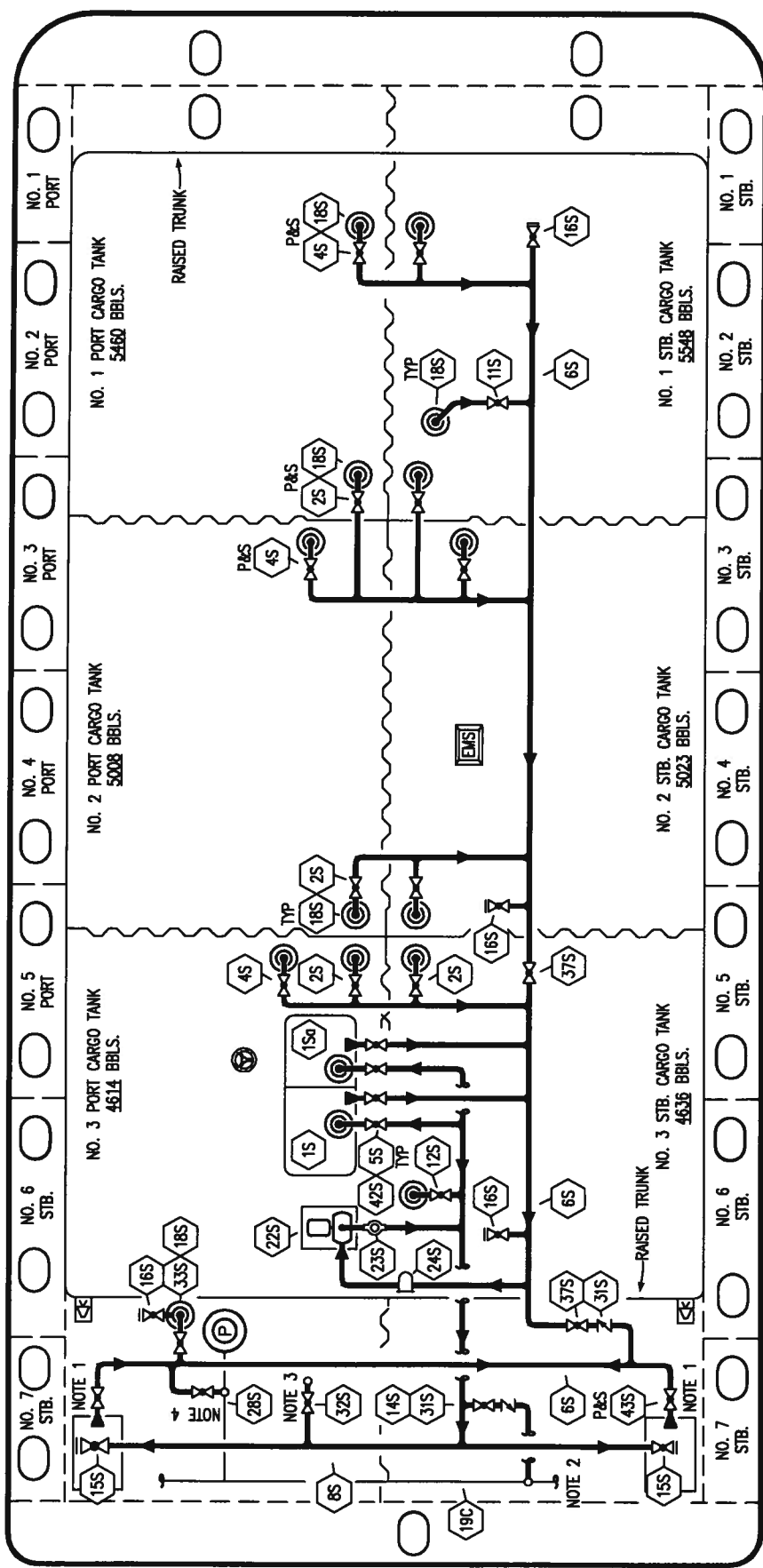
REV.	DATE	BY	CHK	APP	REVISION	DESCRIPTION
0	03/15/10	RB	OF	APPROVED		

STARBOARD

NO	DESCRIPTION	NO	DESCRIPTION
7V	8" HEADER VALVE	27V	TEST CONNECTION
8V	8" VENT STACK VALVE	28V	DOCK CONNECTION ALARM
10V	8" HIGH LEVEL/OVERFILL ALARM	38V	8" VAPOR DROP
12V	2" HERMETIC SAMPLE	39V	6" PRESSURE/VACUUM VALVE
14V	6" SIGHT GLASS WITH GAUGE TREE	42V	8" ULLAGE HATCH
15V	2" INSPECTION PORT	50V	8" VAPOR HEADER
16V	8" VAPOR VENT STACK	51V	8" VAPOR PIPELINE
17V	14" BUTTERWORTH	53V	8" HIGH LEVEL GAUGE
18V	2" RESTRICTIVE GAUGE TUBE	54V	8" LOW LEVEL GAUGE
19V	EMERGENCY ENGINE SHUT DOWN	59V	PRESS/MAC GAUGE
21V	2" HERMETIC GAUGE		ABOVE DECK PIPING

REV. 0

BOW



STARBOARD

- | | | | | | |
|---------|------------------------------------|---------|-----------------------------------|---------|------------------------|
| NO. 15 | PRIMARY SIDE 2500 GAL SLOP TANK | NO. 16S | REMOTE SUCTION CONNECTION | NO. 16S | STARBOARD |
| NO. 15a | SECONDARY SIDE 500 GAL SLOP TANK | NO. 18S | STRIPPING DROP | NO. 18S | SLOP TANK FILL VALVE |
| NO. 2S | CARGO SUMP SUCTION VALVE | NO. 19C | CARGO HEADER | NO. 42S | DRIP PAN SUCTION VALVE |
| NO. 4S | CARGO TANK SUCTION VALVE | NO. 22S | STRIPPING PUMP | NO. 43S | ABOVE DECK PIPING |
| NO. 5S | SLOP TANK SUCTION VALVE | NO. 23S | FLOW INDICATOR (PIPE SIGHT GLASS) | | |
| NO. 6S | SUCTION HEADER PIPING | NO. 24S | BASKET STRAINER | | |
| NO. 8S | DISCHARGE HEADER PIPING | NO. 28S | CARGO PIPING SUCTION | | |
| NO. 11S | LOWER CARGO PIPELINE SUCTION VALVE | NO. 31S | CHECK VALVE | | |
| NO. 12S | RETURN TO CARGO TANK VALVE | NO. 32S | PUMP WELL PRIMER VALVE | | |
| NO. 14S | DISCHARGE VALVE | NO. 33S | PUMP WELL SUCTION VALVE | | |
| NO. 15S | HEADER DISCHARGE VALVE | NO. 37S | BLOCK VALVE | | |

TRINITY-PLATZER SHIPYARD - EX: DXE 3059T

KIRBY INLAND MARINE

STRIPPING PIPING FLOW DIAGRAM

SCALE: NONE
PAGE: 3 OF 3

REV.	DATE	BY	CHK	APP	REVISION	DESCRIPTION
0	03/15/10	RB	OF	APPROVED		

KIRBY 30016T

REV. 0