

NO	DESCRIPTION
7V	8" HEADER VALVE
8V	8" VENT STACK VALVE
10V	8" HIGH LEVEL/OVERFILL ALARM
11V	8" 1-METER GAUGE STICK
14V	SIGHT GLASS
16V	8" VAPOR VENT STACK
17V	19" BUTTERWORTH
18V	2" RESTRICTIVE GAUGE TUBE
19V	EMERGENCY ENGINE SHUT DOWN
27V	1/4" TEST VALVE
28V	DOCK CONNECTION ALARM
38V	8" VAPOR DROP

NO	DESCRIPTION
39V	3" PRESSURE/VACUUM VALVE
39V _o	8" PRESSURE/VACUUM VALVE
41V	8" VAPOR TANK VALVE
42V	8" ULLAGE HATCH
47V	8" DUMMY HEADER
48V	8" DUMMY HEADER VALVE
50V	8" VAPOR HEADER
51V	8" VAPOR PIPELINE
59V	PRESS/VAC GAUGE
—	ABOVE DECK PIPING

STARBOARD

NOTE 1: CONTAINMENT P/S

NOTE 2: ALTERNATE CONTAINMENT

NOTE 3: TYPICAL RIGGING IN EACH TANK

PLATZER SHIPYARD - EX: STCO 2901

KIRBY INLAND MARINE 

**VAPOR
PIPING FLOW DIAGRAM**

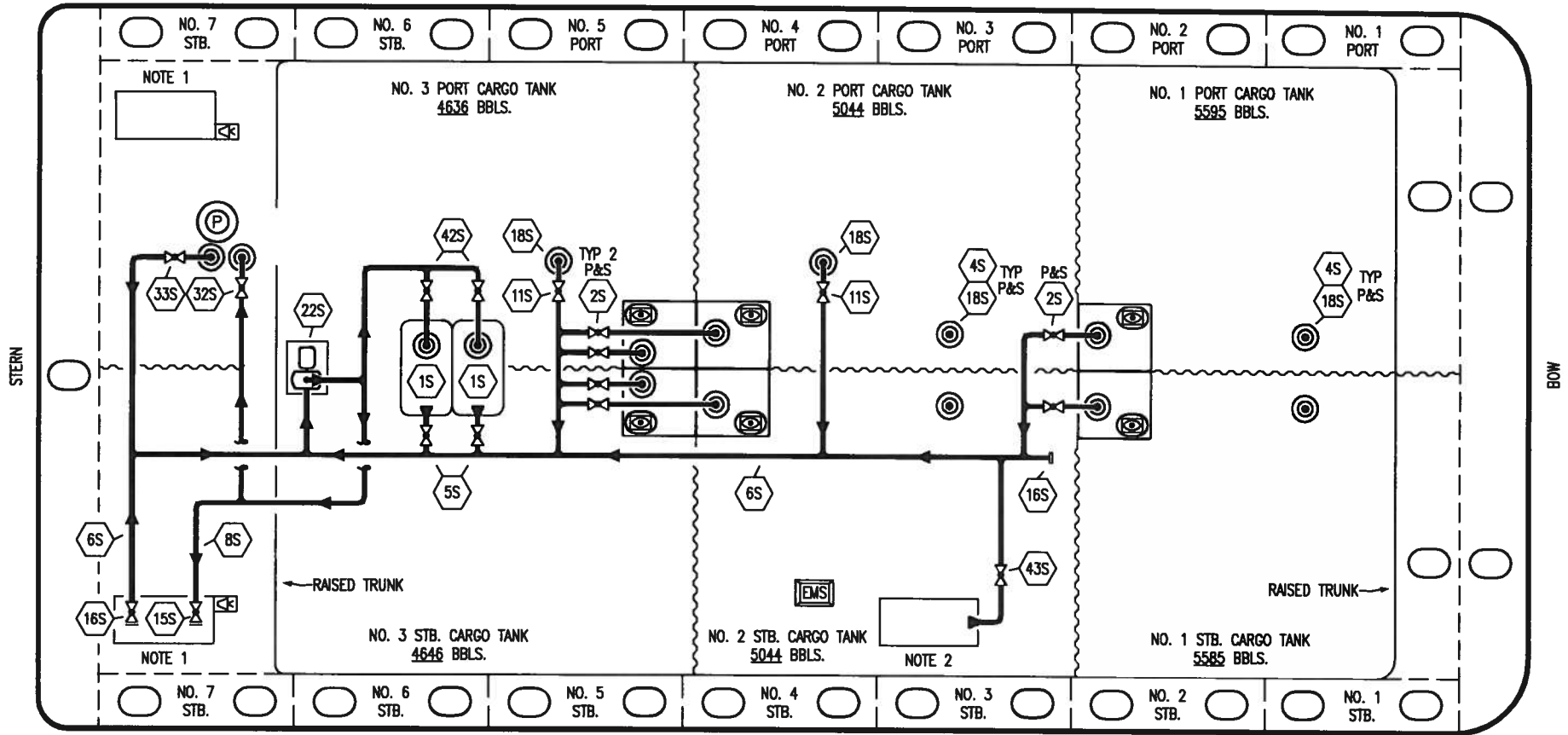
0	04/12/10	DB	RB	OF	APPROVED
REV.	DATE	BY	CHK	APP	REVISION DESCRIPTION

SCALE: NONE
PAGE: 2 OF 3

KIRBY 30010

REV. **0**

PORT



STARBOARD

- | | | | |
|-----|------------------------------------|-----|---------------------------|
| NO | DESCRIPTION | NO | DESCRIPTION |
| 1S | SLOP TANK | 16S | REMOTE SUCTION CONNECTION |
| 2S | CARGO SUMP SUCTION VALVE | 18S | STRIPPING DROP (C) |
| 4S | CARGO TANK SUCTION VALVE | 22S | STRIPPING PUMP |
| 5S | SLOP TANK SUCTION VALVE | 32S | PUMP WELL PRIMER VALVE |
| 6S | SUCTION HEADER PIPING | 33S | PUMP WELL SUCTION VALVE |
| 8S | DISCHARGE HEADER PIPING | 42S | SLOP TANK FILL VALVE |
| 11S | LOWER CARGO PIPELINE SUCTION VALVE | 43S | DRIP PAN SUCTION VALVE |
| 15S | HEADER DISCHARGE VALVE | — | — ABOVE DECK PIPING |

NOTE 1: CONTAINMENT P/S
NOTE 2: ALTERNATE CONTAINMENT

PLATZER SHIPYARD - EX: STCO 2901

KIRBY INLAND MARINE 

**STRIPPING
PIPING FLOW DIAGRAM**

0	04/12/10	DB	RB	OF	APPROVED
REV.	DATE	BY	CHK	APP	REVISION DESCRIPTION

SCALE: NONE
PAGE: 3 OF 3

KIRBY 30010 REV. **0**