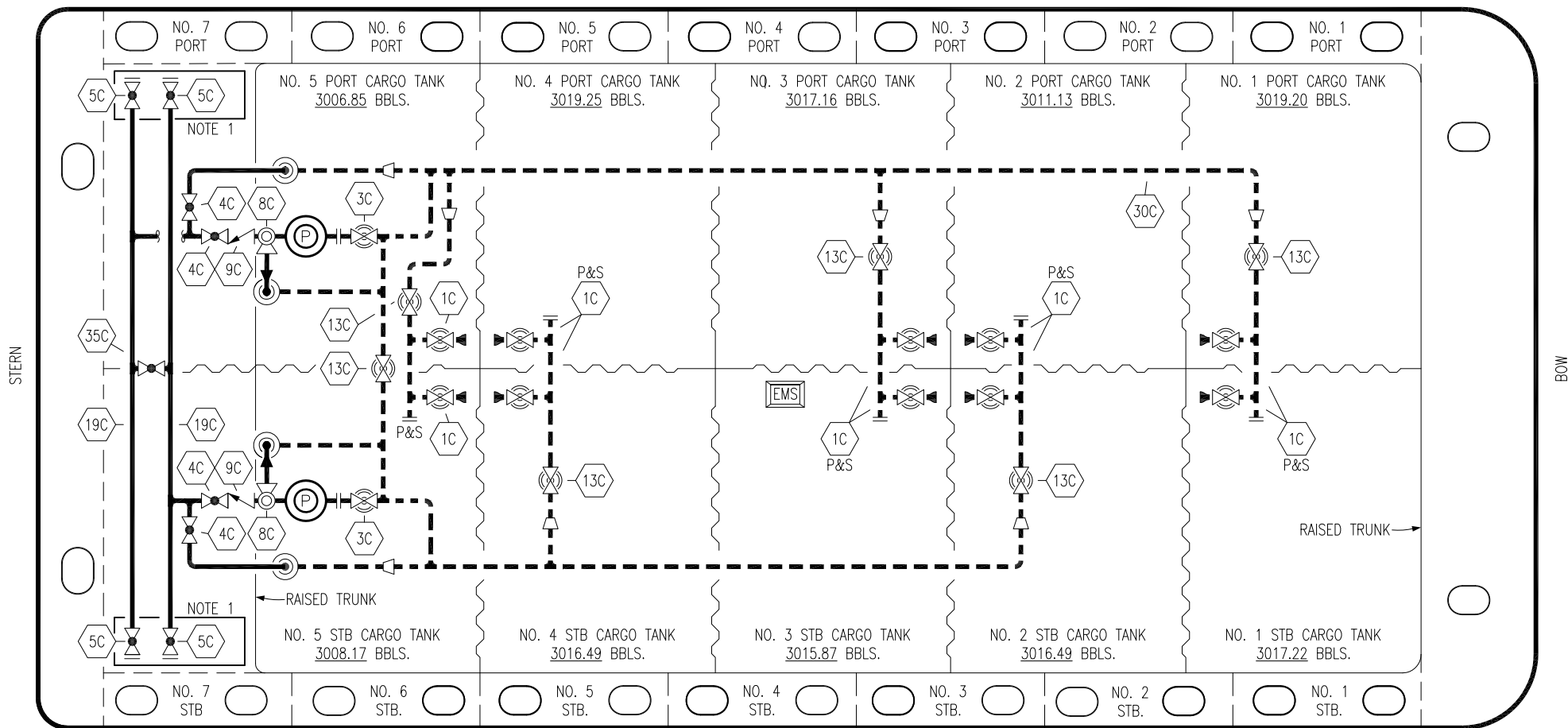


PORT




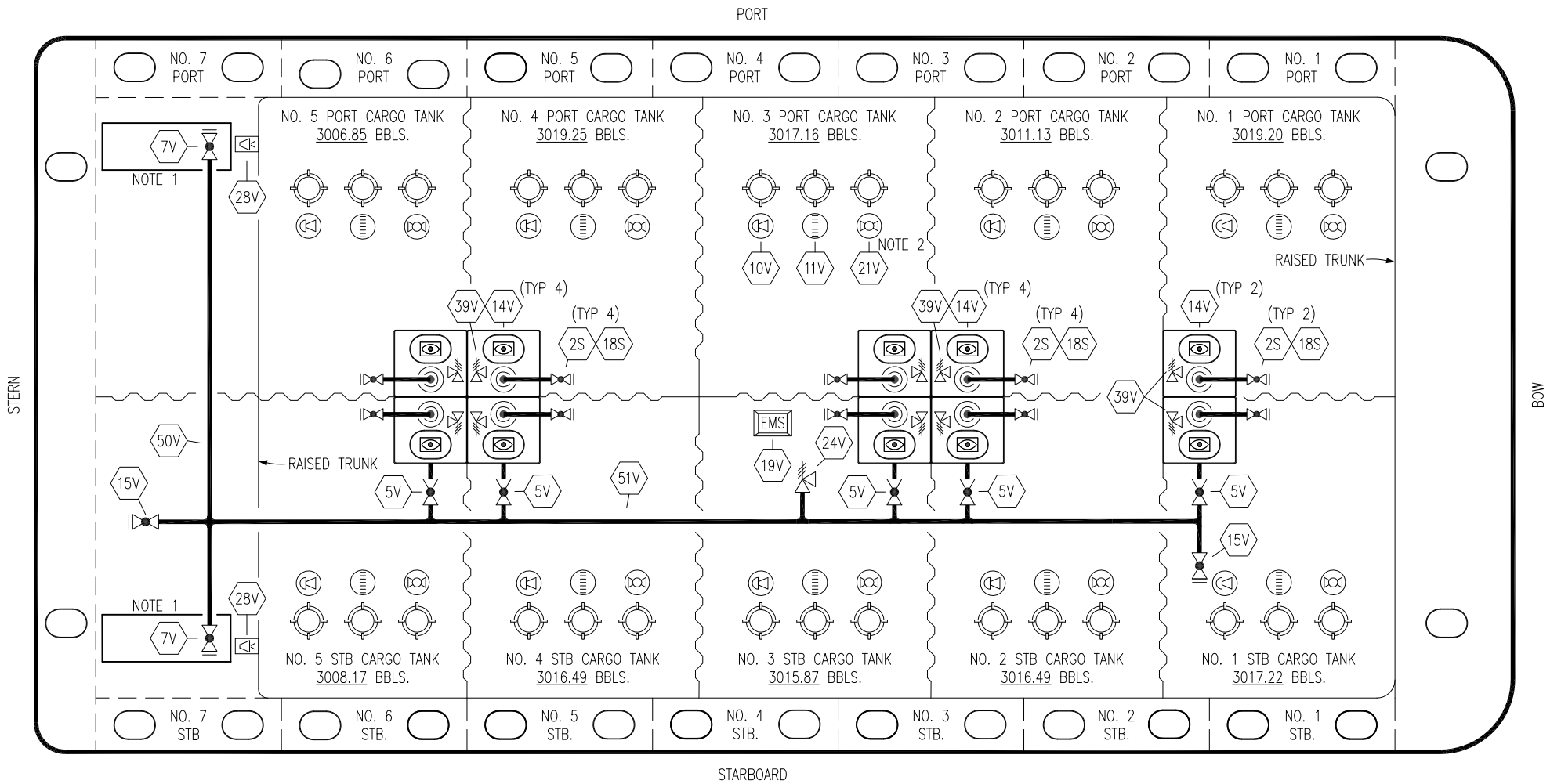
STARBOARD

NO	DESCRIPTION	NO	DESCRIPTION
1C	CARGO TANK VALVE	19C	CARGO HEADER
3C	MASTER SUCTION VALVE	30C	CARGO PIPELINE
4C	DISCHARGE VALVE	35C	CROSSOVER VALVE
5C	HEADER VALVE	37C	CARGO DROP
8C	RELIEF VALVE	⊙	ABOVE DECK PIPING
9C	CHECK VALVE	---	BELOW DECK PIPING
13C	CARGO PIPING BLOCK VALVE		

NOTE 1: CONTAINMENT P/S

HALIMAR -- EX: CTCO 3000

					KIRBY INLAND MARINE 	
					CARGO	
					PIPING FLOW DIAGRAM	
1	04/13/20	MRV	DDA		REVISED BARGE NAME	SCALE: NONE
0	02/22/19	MRV	DDA		ISSUED FOR APPROVAL	
REV.	DATE	BY	CHK	APP	REVISION DESCRIPTION	PAGE: 1 OF 2
					KIRBY 30-01	1



NO	DESCRIPTION	NO	DESCRIPTION
5V	BLOCK VALVE	28V	DOCK CONNECTION ALARM
7V	HEADER VALVE	39V	PRESSURE/VACUUM RELIEF VALVE
10V	HIGH LEVEL/OVERFILL ALARM	50V	VAPOR HEADER
11V	1-METER GAUGE STICK	51V	VAPOR PIPELINE
14V	SIGHT GLASS	2S	CARGO SUMP SUCTION VALVE
15V	INSPECTION PORT	18S	STRIPPING DROP
16V	VAPOR VENT STACK		ABOVE DECK PIPING
19V	EMERGENCY ENGINE SHUT DOWN		
21V	HERMETIC GAUGE		
24V	PRESSURE RELIEF VALVE		

NOTE 2: TYPICAL RIGGING IN EACH TANK
 NOTE 1: CONTAINMENT P/S

HALIMAR -- EX: CTCO 3000

REV.	DATE	BY	CHK	APP	REVISION DESCRIPTION
1	04/13/20	MRV	DDA		REVISED BARGE NAME
0	02/22/19	MRV	DDA		ISSUED FOR APPROVAL

KIRBY INLAND MARINE

**VAPOR
PIPING FLOW DIAGRAM**

SCALE: NONE
 PAGE: 2 OF 2

KIRBY 30-01

REV. **1**