

NO	DESCRIPTION	NO	DESCRIPTION
1C	8" CARGO TANK LOW SUCTION	9Ca	1 1/4" CHECK VALVE
1Ca	8" CARGO TANK HIGH SUCTION	10C	1 1/4" BURP VALVE
2C	10" LOAD VALVE	13C	12" CARGO PIPING BLOCK VALVE
3C	12" MASTER SUCTION VALVE	19C	12" CARGO HEADER
4C	10" DISCHARGE VALVE	30C	12" CARGO PIPELINE
5C	8" HEADER VALVE	37C	CARGO DROP
6C	12" SALVAGE VALVE	—	— ABOVE DECK PIPING
8C	6" RELIEF VALVE	---	--- BELOW DECK PIPING
9C	10" CHECK VALVE		

NOTE 1: CONTAINMENT P/S

JEFFBOAT -- EX: N/A

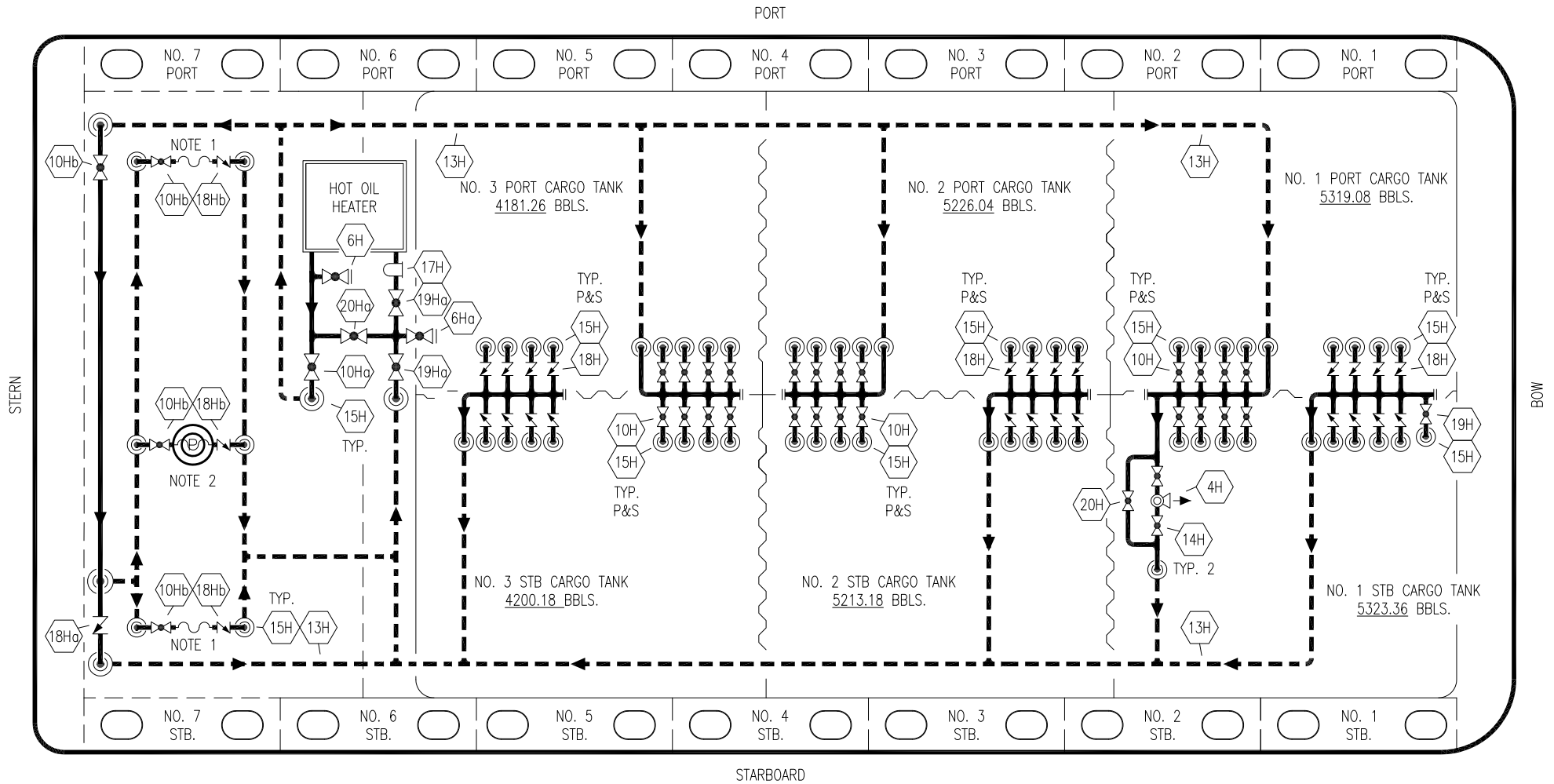
1	04/24/19	NRB	DDA		ADDED VAPOR DIAGRAM
0	03/01/10	RB	RB	OF	APPROVED
REV.	DATE	BY	CHK	APP	REVISION DESCRIPTION

KIRBY INLAND MARINE

**CARGO
PIPING FLOW DIAGRAM**

SCALE: NONE
PAGE: 1 OF 3

KIRBY 29702B REV. **1**



NO	DESCRIPTION	NO	DESCRIPTION
4H	3" RELIEF VALVE	17H	6" BASKET STRAINER
6H	6" SUPPLY HEADER VALVE	18H	2" CHECK VALVE
6Ha	6" RETURN HEADER VALVE	18Ha	CHECK VALVE
10H	2" TANK COIL SUPPLY VALVE	18Hb	1" CHECK VALVE
10Ha	6" SUPPLY VALVE	19H	2" RETURN VALVE
10Hb	1" SUPPLY VALVE	19Ha	6" RETURN VALVE
13H	HOT OIL PIPELINE	20H	3" BYPASS VALVE
14H	3" PRESSURE RELIEF BLOCK VALVE	20Ha	6" HEADER BYPASS VALVE
15H	HOT OIL DROP		

NOTE 1: CONTAINMENT P/S HEATING
 NOTE 2: DEEP WELL HEAT TRACE

JEFFBOAT -- EX: N/A

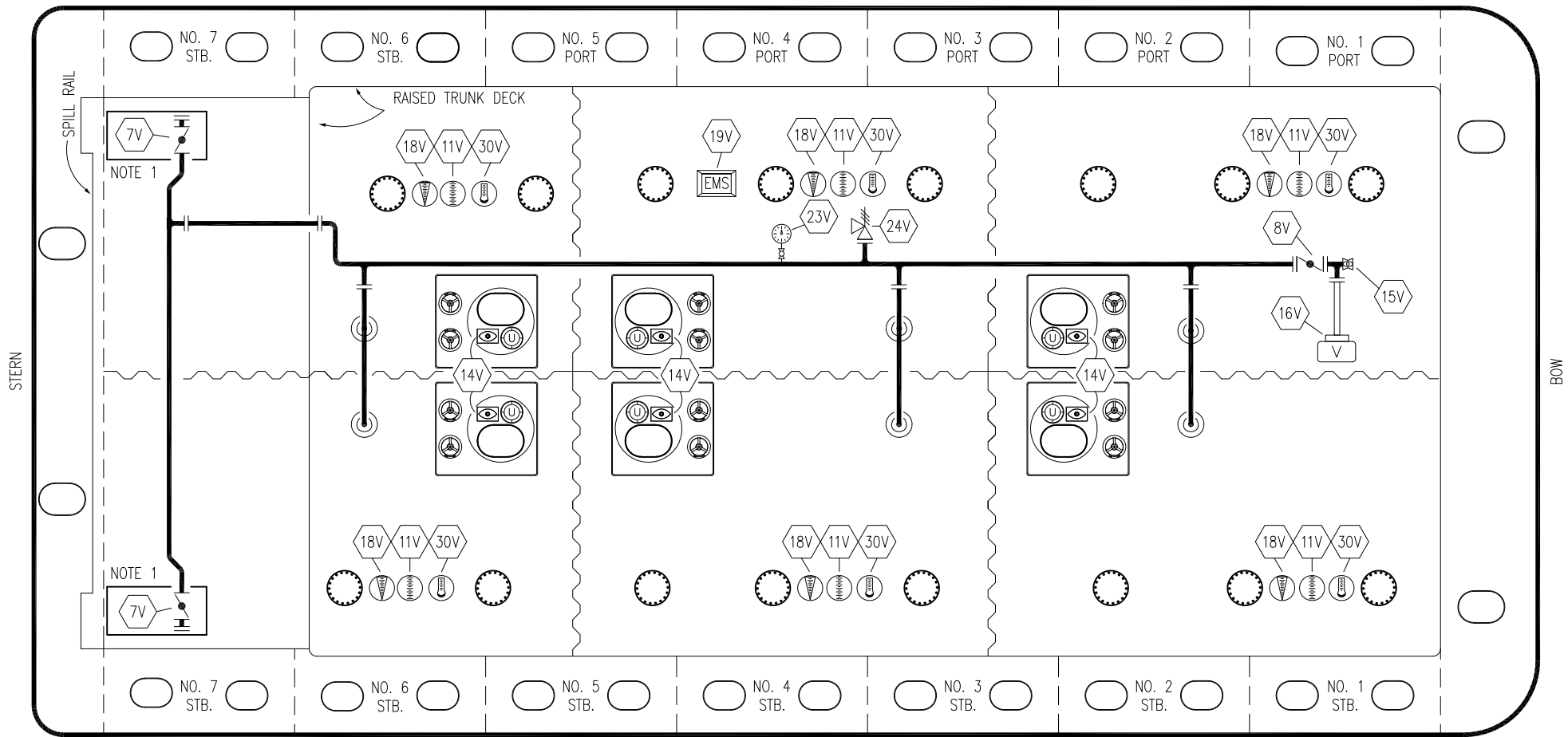
REV.	DATE	BY	CHK	APP	REVISION DESCRIPTION
1	04/24/19	NRB	DDA		ADDED VAPOR DIAGRAM
0	03/01/10	DB	RB	OF	APPROVED

KIRBY INLAND MARINE 

**HOT OIL
 PIPING FLOW DIAGRAM**

SCALE: NONE
 PAGE: 2 OF 3

KIRBY 29702B REV. **1**



- | | | | | | |
|-----|------|---------------------------|-----|------|-------------------------------|
| NO | SIZE | DESCRIPTION | NO | SIZE | DESCRIPTION |
| 7V | 8" | HEADER VALVE | 24V | 6" | PRESSURE RELIEF VALVE |
| 8V | 8" | VENT STACK VALVE | 30V | 2" | THERMAL WELL WITH BERGAN PTDU |
| 11V | | GAUGE STICK AND ALARM | | | |
| 14V | | SIGHT GLASS | | | |
| 15V | | INSPECTION PORT | | | |
| 16V | 8" | VAPOR VENT STACK | | | |
| 18V | | RESTRICTIVE GAUGE TUBE | | | |
| 19V | | EMERGENCY SHUTDOWN SYSTEM | | | |
| 23V | | PRESSURE GAUGE | | | |

NOTE 1: 6 BARREL DRIP PAN
 ABOVE DECK PIPING ———

JEFFBOAT -- EX: N/A

<div style="display: flex; justify-content: space-between; align-items: center;"> <div style="font-size: 2em; font-weight: bold;">KIRBY INLAND MARINE</div> </div>					
VAPOR PIPING FLOW DIAGRAM					
0	04/24/19	NRB	DDA	ISSUED FOR APPROVAL	SCALE: NONE
REV.	DATE	BY	CHK	APP	REVISION DESCRIPTION
					PAGE: 3 OF 3
KIRBY 29702B					REV. 0