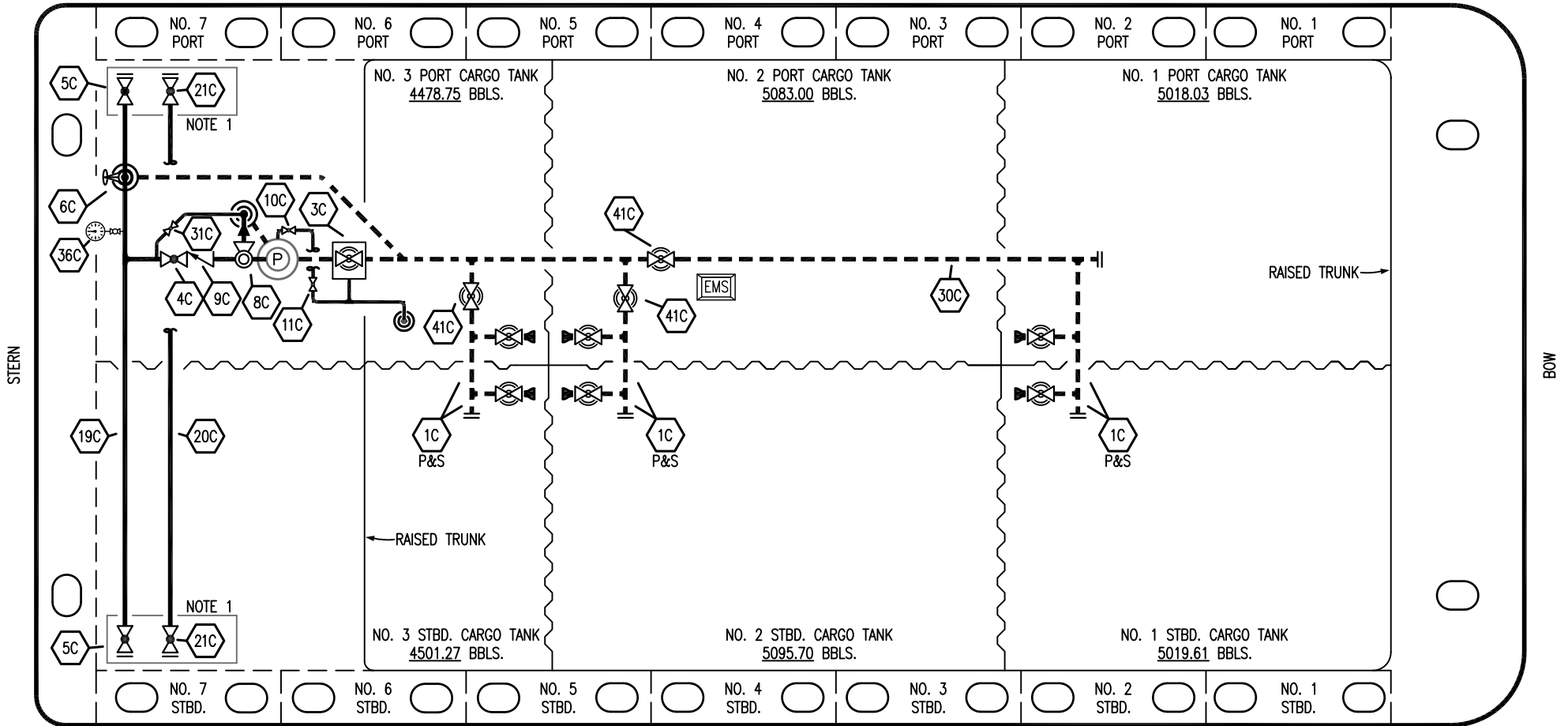


PORT



STARBOARD

- |     |                                 |       |                     |
|-----|---------------------------------|-------|---------------------|
| NO  | DESCRIPTION                     | NO    | DESCRIPTION         |
| 1C  | CARGO TANK VALVE                | 19C   | CARGO HEADER        |
| 2C  | LOAD VALVE                      | 20C   | DUMMY PIPELINE      |
| 3C  | MASTER SUCTION VALVE            | 21C   | DUMMY HEADER VALVE  |
| 4C  | DISCHARGE VALVE                 | 30C   | CARGO PIPELINE      |
| 5C  | HEADER VALVE                    | 31C   | BYPASS VALVE        |
| 6C  | SALVAGE VALVE                   | 36C   | PRESSURE GAUGE      |
| 8C  | RELIEF VALVE                    | 37C   | CARGO DROP          |
| 9C  | CHECK VALVE                     | 41C   | SUCTION BLOCK VALVE |
| 10C | BURP VALVE                      | —     | ABOVE DECK PIPING   |
| 11C | BLEED OFF VALVE                 | - - - | BELOW DECK PIPING   |
| 12C | BURP VALVE RETURN TO CARGO TANK |       |                     |

NOTE 1: CONTAINMENT P/S

EX: SMS 30048

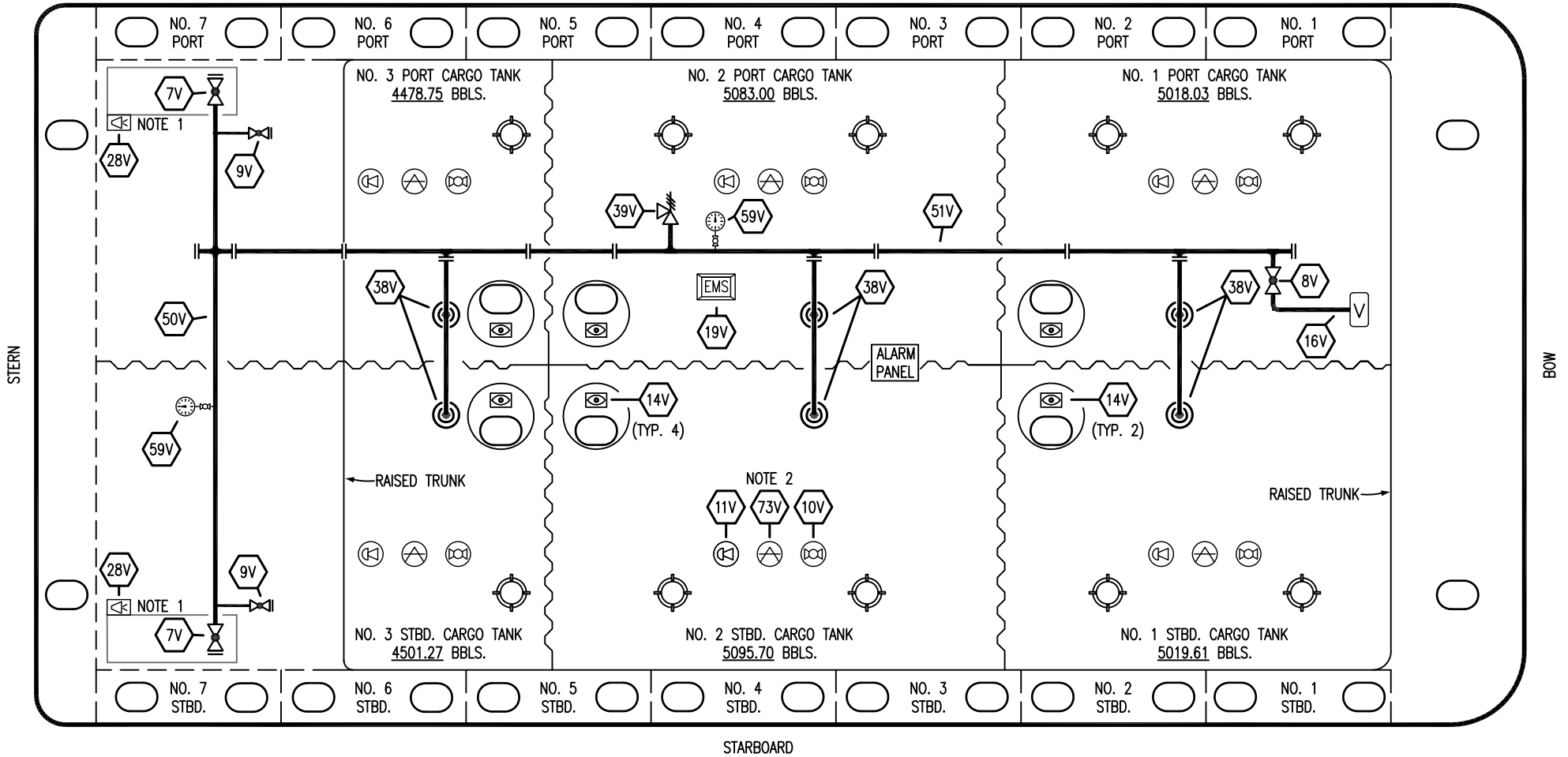
0	08/21/23	MRV	DDA	DAR	ISSUED FOR APPROVAL
REV.	DATE	BY	CHK	APP	REVISION DESCRIPTION

KIRBY INLAND MARINE

**CARGO  
PIPING FLOW DIAGRAM**

SCALE: NONE	<b>KIRBY 29165</b>	REV. 0
PAGE: 1 OF 3		

PORT



NO	DESCRIPTION	NO	DESCRIPTION
7V	HEADER VALVE	38V	VAPOR PENETRATION
8V	VENT STACK VALVE	39V	PRESSURE/VACUUM VALVE
9V	DRAIN VALVE	50V	VAPOR HEADER
10V	HIGH LEVEL/OVERFILL ALARM	51V	VAPOR PIPELINE
11V	1-METER GAUGE STICK	59V	PRESS/VAC GAUGE
16V	VAPOR VENT STACK	73V	MMC GAUGE POINT
19V	EMERGENCY ENGINE SHUT DOWN	—	ABOVE DECK PIPING
28V	DOCK CONNECTION ALARM		

NOTE 2: TYPICAL RIGGING IN EACH TANK  
 NOTE 1: CONTAINMENT P/S

EX: SMS 30048

REV.	DATE	BY	CHK	APP	REVISION DESCRIPTION
0	08/21/23	MRV	DDA	DAR	ISSUED FOR APPROVAL

**KIRBY INLAND MARINE** 

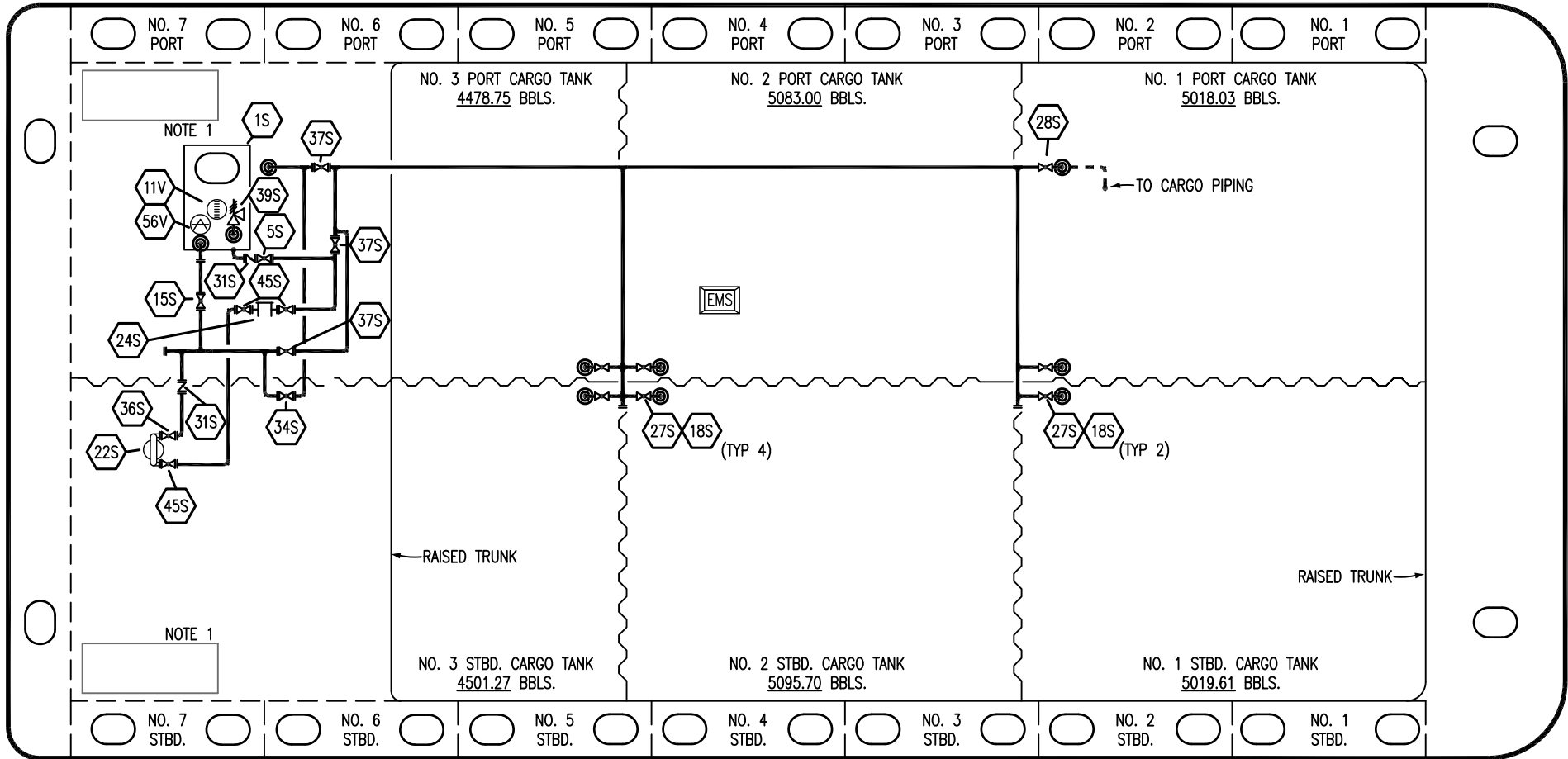
**VAPOR  
 PIPING FLOW DIAGRAM**

SCALE: NONE  
 PAGE: 2 OF 3

**KIRBY 29165**

REV. **0**

PORT



STERN

BOW


NO	DESCRIPTION	NO	DESCRIPTION
1S	SLOP TANK	32S	PUMP WELL PRIMER VALVE
5S	SLOP TANK SUCTION VALVE	33S	PUMP WELL SUCTION VALVE
15S	RETURN TO TANK	34S	DEEPWELL PRIME VALVE
16S	REMOTE SUCTION CONNECTION	36S	STRIPPING PUMP DISCHARGE VALVE
18S	STRIPPING DROP (⊙)	37S	BLOCK VALVE
22S	STRIPPING PUMP	39S	P/V VALVE
24S	BASKET STRAINER	45S	STRIPPING PUMP SUCTION VALVE
26S	STRIPPING HEADER BLOCK VALVE	11V	GAUGE STICK
27S	SUMP SUCTION VALVE	56V	GAUGE POINT
28S	CARGO PIPING SUCTION	—	ABOVE DECK PIPING
31S	CHECK VALVE	---	BELOW DECK PIPING

STARBOARD

NOTE 1: CONTAINMENT P/S

EX: SMS 30048

REV.	DATE	BY	CHK	APP	REVISION DESCRIPTION
0	08/21/23	MRV	DDA	DAR	ISSUED FOR APPROVAL



**KIRBY INLAND MARINE**

**STRIPPING**

**PIPING FLOW DIAGRAM**

**KIRBY 29165**

SCALE: NONE	REV. 0
PAGE: 3 OF 3	