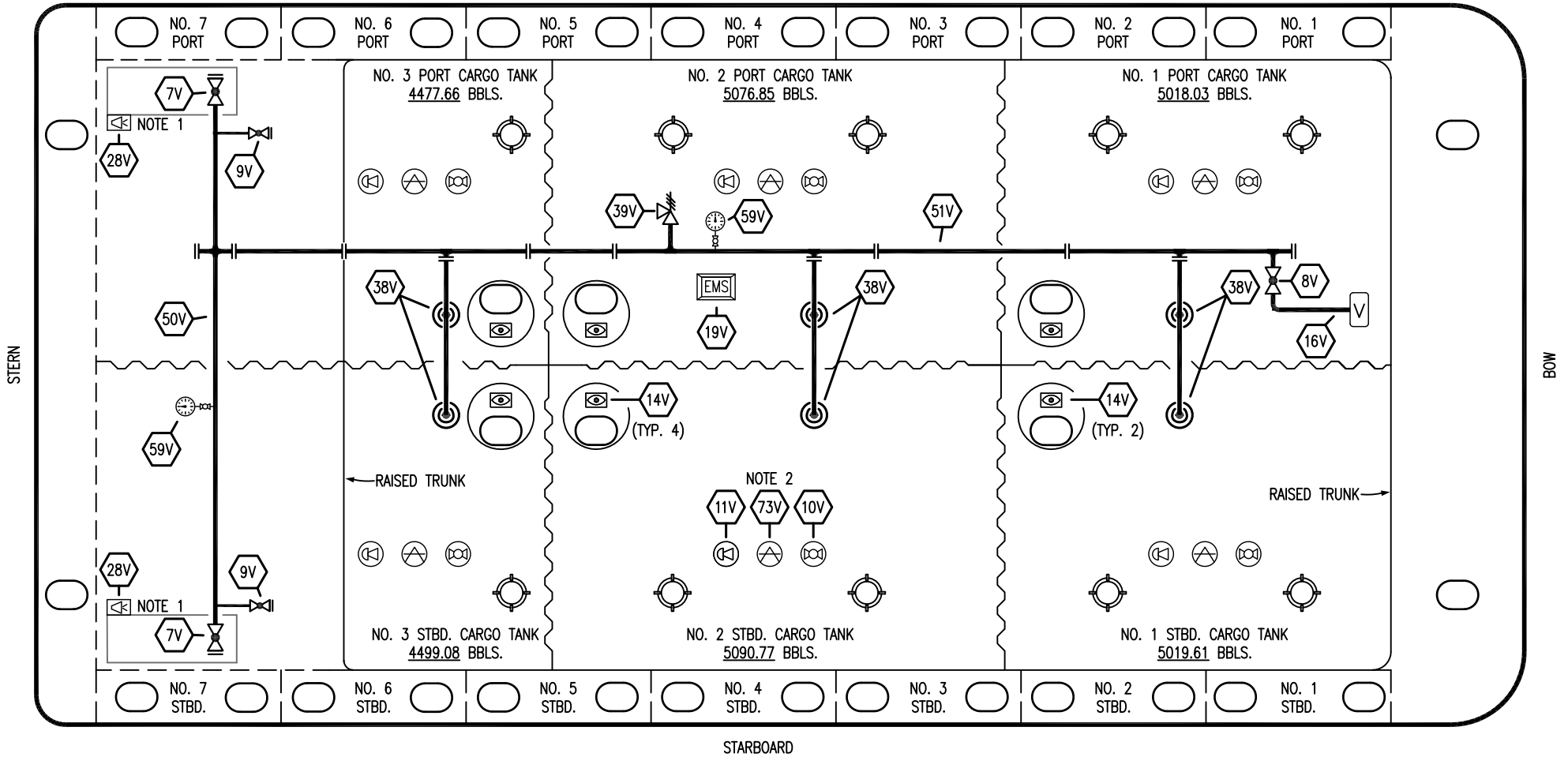


PORT



STARBOARD

- | | |
|-----|----------------------------|
| NO | DESCRIPTION |
| 7V | 8" HEADER VALVE |
| 8V | 8" VENT STACK VALVE |
| 9V | DRAIN VALVE |
| 10V | HIGH LEVEL/OVERFILL ALARM |
| 11V | 1-METER GAUGE STICK |
| 16V | VAPOR VENT STACK |
| 19V | EMERGENCY ENGINE SHUT DOWN |
| 28V | DOCK CONNECTION ALARM |

- | | |
|-----|--------------------------|
| NO | DESCRIPTION |
| 38V | 8" VAPOR PENETRATION (⊙) |
| 39V | PRESSURE/VACUUM VALVE |
| 50V | 8" VAPOR HEADER |
| 51V | 8" VAPOR PIPELINE |
| 59V | PRESS/VAC GAUGE |
| 73V | MMC GAUGE POINT |
| — | ABOVE DECK PIPING |

NOTE 2: TYPICAL RIGGING IN EACH TANK
 NOTE 1: CONTAINMENT P/S

EX: SMS 30047

0	06/01/23	MRV	DDA	LEP	ISSUED FOR APPROVAL
REV.	DATE	BY	CHK	APP	REVISION DESCRIPTION

KIRBY INLAND MARINE 

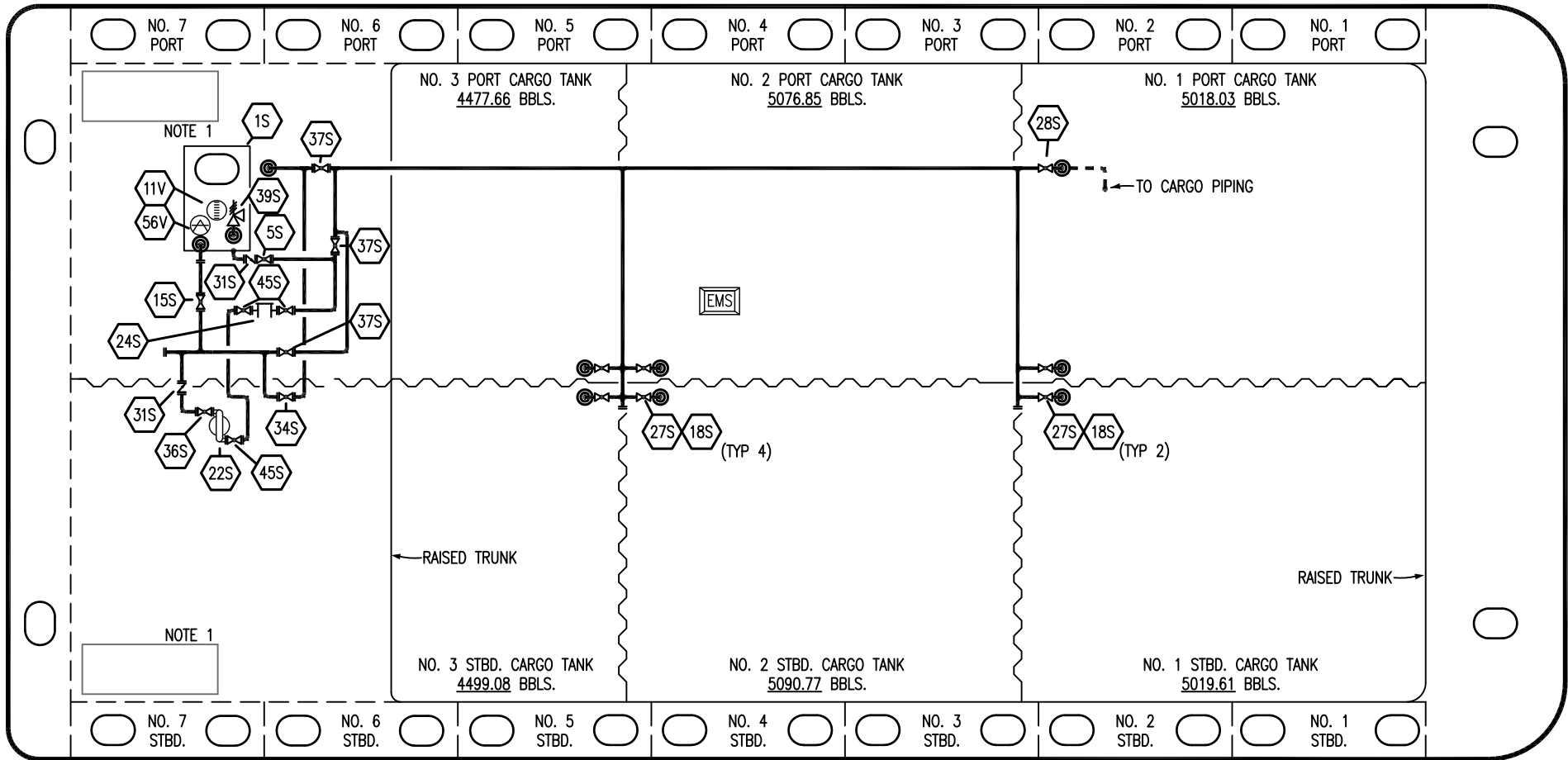
**VAPOR
 PIPING FLOW DIAGRAM**

SCALE: NONE
 PAGE: 2 OF 3

KIRBY 29164

REV. **0**

PORT



NO	DESCRIPTION	NO	DESCRIPTION
1S	SLOP TANK	32S	PUMP WELL PRIMER VALVE
5S	SLOP TANK SUCTION VALVE	33S	PUMP WELL SUCTION VALVE
15S	RETURN TO TANK	34S	DEEPWELL PRIME VALVE
16S	REMOTE SUCTION CONNECTION	36S	STRIPPING PUMP DISCHARGE VALVE
18S	STRIPPING DROP (⊙)	37S	BLOCK VALVE
22S	STRIPPING PUMP	39S	P/V VALVE
24S	BASKET STRAINER	45S	STRIPPING PUMP SUCTION VALVE
26S	STRIPPING HEADER BLOCK VALVE	11V	GAUGE STICK
27S	SUMP SUCTION VALVE	56V	GAUGE POINT
28S	CARGO PIPING SUCTION	—	ABOVE DECK PIPING
31S	CHECK VALVE	- - -	BELOW DECK PIPING

STARBOARD

NOTE 1: CONTAINMENT P/S

EX: SMS 30047

REV.	DATE	BY	CHK	APP	REVISION DESCRIPTION
0	06/01/23	MRV	DDA	LEP	ISSUED FOR APPROVAL

KIRBY INLAND MARINE 

**STRIPPING
PIPING FLOW DIAGRAM**

SCALE: NONE
PAGE: 3 OF 3

KIRBY 29164

REV. **0**