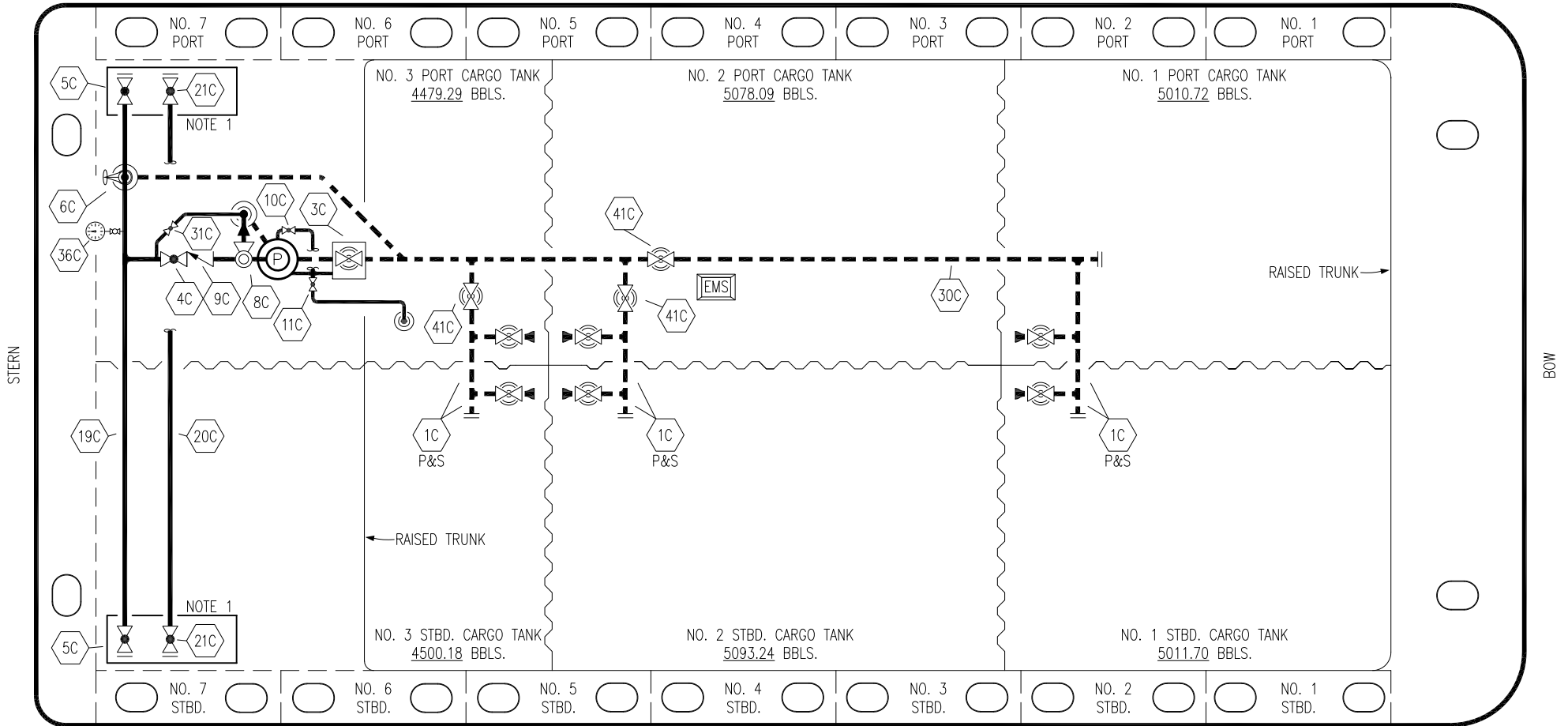


PORT




STARBOARD

- |     |                                 |       |                         |
|-----|---------------------------------|-------|-------------------------|
| NO  | DESCRIPTION                     | NO    | DESCRIPTION             |
| 1C  | CARGO TANK VALVE                | 19C   | CARGO HEADER            |
| 2C  | LOAD VALVE                      | 20C   | DUMMY PIPELINE          |
| 3C  | MASTER SUCTION VALVE            | 21C   | DUMMY HEADER VALVE      |
| 4C  | DISCHARGE VALVE                 | 30C   | CARGO PIPELINE          |
| 5C  | HEADER VALVE                    | 31C   | BYPASS VALVE            |
| 6C  | SALVAGE VALVE                   | 36C   | PRESSURE GAUGE          |
| 8C  | RELIEF VALVE                    | 37C   | CARGO DROP              |
| 9C  | CHECK VALVE                     | 41C   | SUCTION BLOCK VALVE     |
| 10C | BURP VALVE                      | —     | — ABOVE DECK PIPING     |
| 11C | BLEED OFF VALVE                 | - - - | - - - BELOW DECK PIPING |
| 12C | BURP VALVE RETURN TO CARGO TANK |       |                         |

NOTE 1: CONTAINMENT P/S

EX: SMS 30061

0	08/12/21	MRV	DDA	CW	ISSUED FOR APPROVAL
REV.	DATE	BY	CHK	APP	REVISION DESCRIPTION



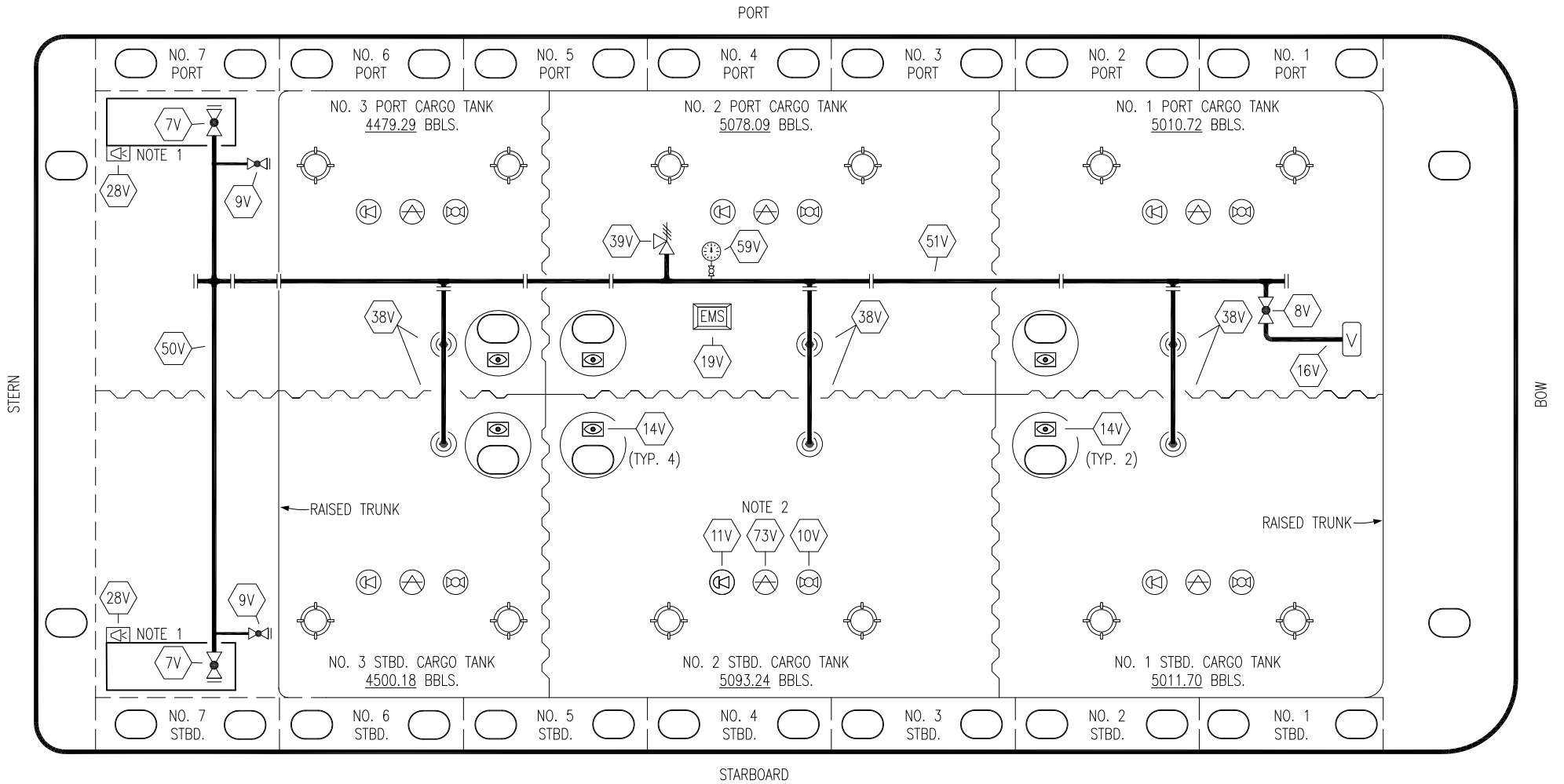
**KIRBY INLAND MARINE**

**CARGO**

**PIPING FLOW DIAGRAM**

**KIRBY 29155**


SCALE: NONE	REV. 0
PAGE: 1 OF 3	



NO	DESCRIPTION	NO	DESCRIPTION
7V	8" HEADER VALVE	38V	8" VAPOR PENETRATION
8V	8" VENT STACK VALVE	39V	PRESSURE/VACUUM VALVE
9V	DRAIN VALVE	50V	8" VAPOR HEADER
10V	HIGH LEVEL/OVERFILL ALARM	51V	8" VAPOR PIPELINE
11V	1-METER GAUGE STICK	59V	PRESS/VAC GAUGE
16V	VAPOR VENT STACK	73V	MMC GAUGE POINT
19V	EMERGENCY ENGINE SHUT DOWN	—	— ABOVE DECK PIPING
28V	DOCK CONNECTION ALARM		

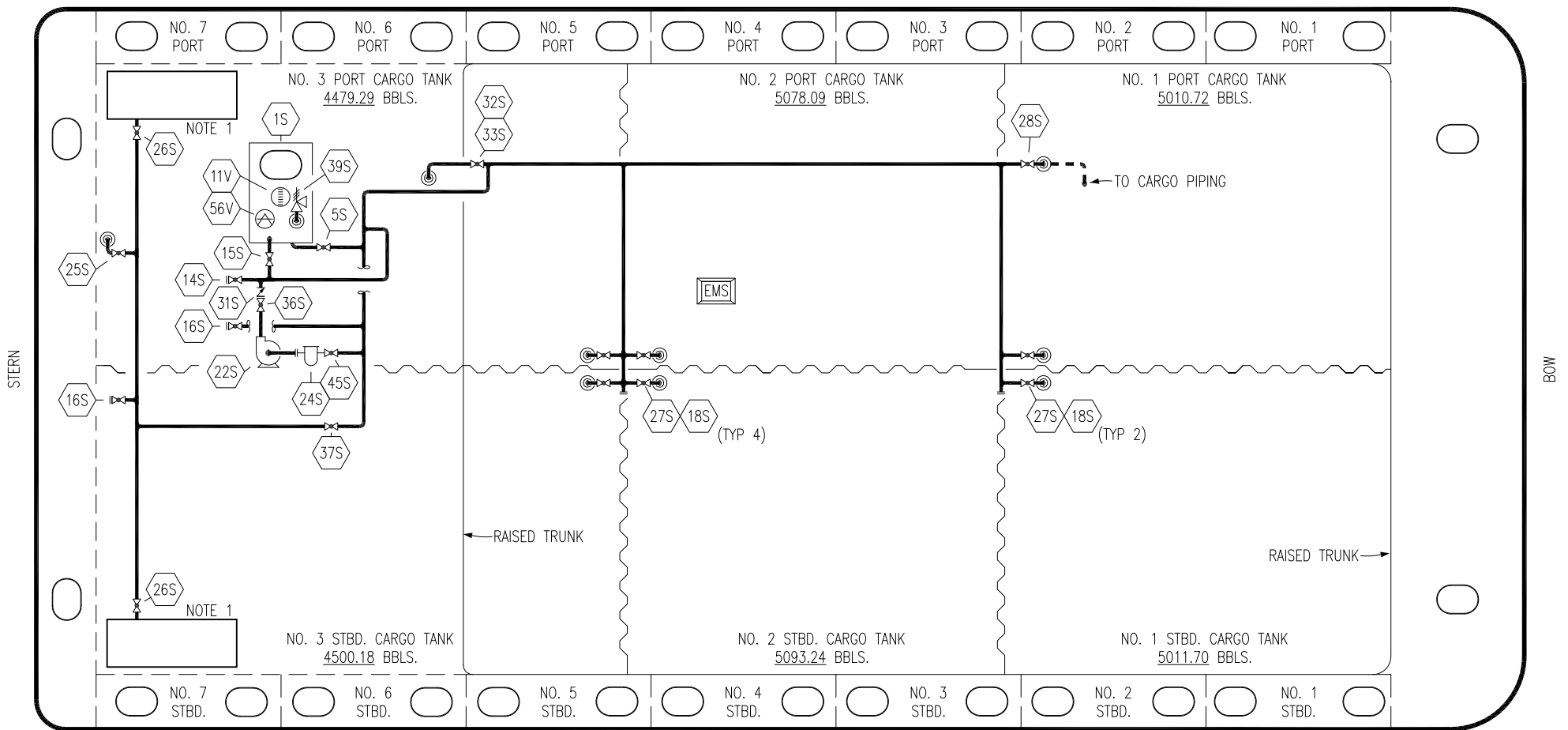
NOTE 2: TYPICAL RIGGING IN EACH TANK  
NOTE 1: CONTAINMENT P/S

EX: SMS 30061

						<b>KIRBY INLAND MARINE</b> 	
						<b>VAPOR PIPING FLOW DIAGRAM</b>	
0	08/12/21	MRV	DDA	CW	ISSUED FOR APPROVAL	SCALE: NONE	<b>KIRBY 29155</b>
REV.	DATE	BY	CHK	APP	REVISION DESCRIPTION	PAGE: 2 OF 3	

REV. **0**

PORT




NO	DESCRIPTION	NO	DESCRIPTION
1S	SLOP TANK	31S	CHECK VALVE
5S	SLOP TANK SUCTION VALVE	32S	PUMP WELL PRIMER VALVE
14S	DISCHARGE VALVE	33S	PUMP WELL SUCTION VALVE
15S	RETURN TO TANK	34S	DEEPWELL PRIME VALVE
16S	REMOTE SUCTION CONNECTION	36S	STRIPPING PUMP DISCHARGE VALVE
18S	STRIPPING DROP	37S	BLOCK VALVE
22S	STRIPPING PUMP	39S	P/V VALVE
24S	BASKET STRAINER	45S	STRIPPING PUMP SUCTION VALVE
25S	AFT TANK STRIPPING VALVE	47S	DRIP PAN STRIPPING VALVE
27S	SUMP SUCTION VALVE		
28S	CARGO PIPING SUCTION		

NO	DESCRIPTION	STARBOARD
11V	GAUGE STICK	
56V	GAUGE POINT	
—	ABOVE DECK PIPING	
- - -	BELOW DECK PIPING	

NOTE 1: CONTAINMENT P/S

EX: SMS 30061

REV.	DATE	BY	CHK	APP	REVISION DESCRIPTION
0	08/12/21	MRV	DDA	CW	ISSUED FOR APPROVAL



**KIRBY INLAND MARINE**

**STRIPPING  
PIPING FLOW DIAGRAM**

**KIRBY 29155**

SCALE: NONE	REV. 0
PAGE: 3 OF 3	