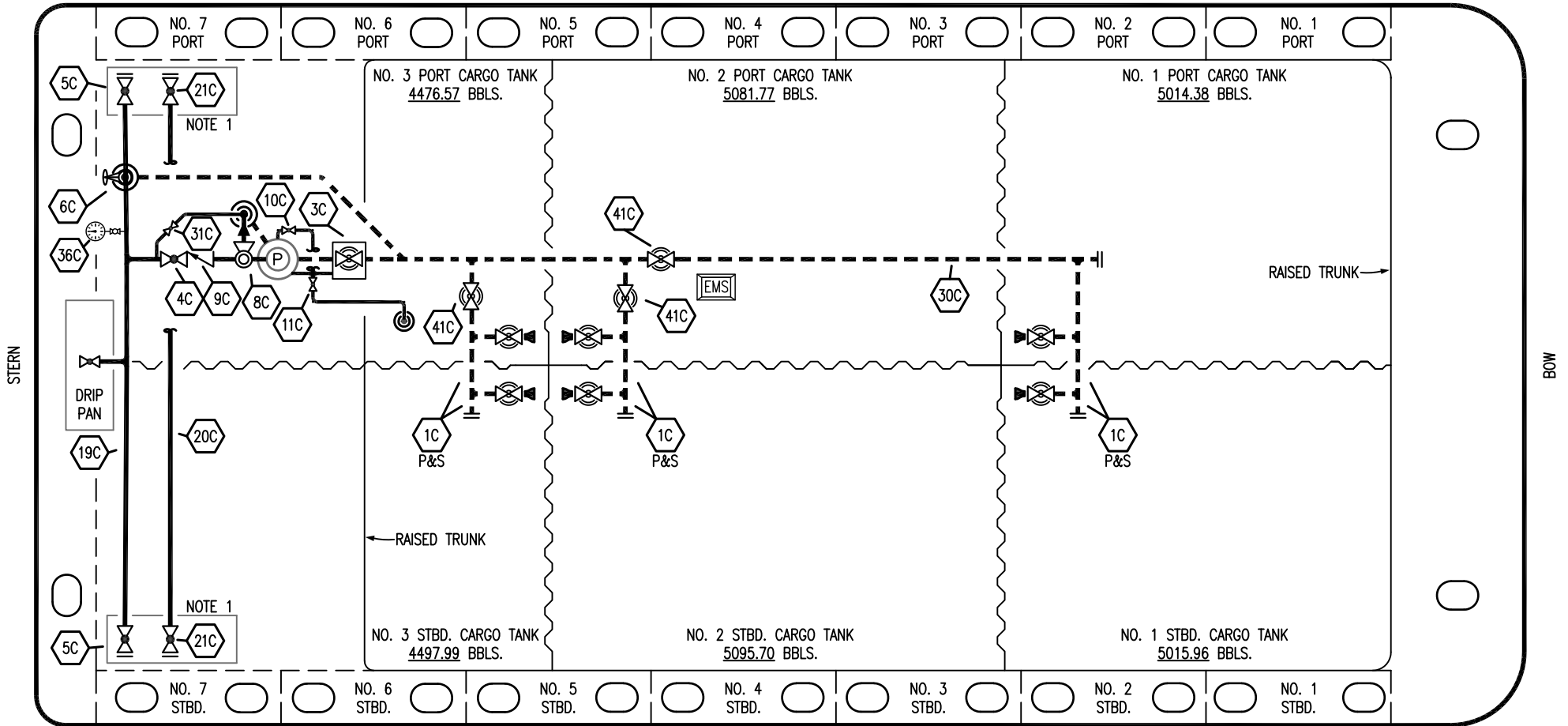


PORT



STERN

BOW

STARBOARD

- | | | | |
|-----|---------------------------------|-------|-------------------------|
| NO | DESCRIPTION | NO | DESCRIPTION |
| 1C | CARGO TANK VALVE | 19C | CARGO HEADER |
| 2C | LOAD VALVE | 20C | DUMMY PIPELINE |
| 3C | MASTER SUCTION VALVE | 21C | DUMMY HEADER VALVE |
| 4C | DISCHARGE VALVE | 30C | CARGO PIPELINE |
| 5C | HEADER VALVE | 31C | BYPASS VALVE |
| 6C | SALVAGE VALVE | 36C | PRESSURE GAUGE |
| 8C | RELIEF VALVE | 37C | CARGO DROP |
| 9C | CHECK VALVE | 41C | SUCTION BLOCK VALVE |
| 10C | BURP VALVE | — | — ABOVE DECK PIPING |
| 11C | BLEED OFF VALVE | - - - | - - - BELOW DECK PIPING |
| 12C | BURP VALVE RETURN TO CARGO TANK | | |

NOTE 1: CONTAINMENT P/S

EX: SMS 30059

REV.	DATE	BY	CHK	APP	REVISION DESCRIPTION
1	04/22/24	AC	DDA	REM	REVISED PER CLIENT COMMENTS
0	07/14/21	MRV	DDA	CW	ISSUED FOR APPROVAL

KIRBY INLAND MARINE

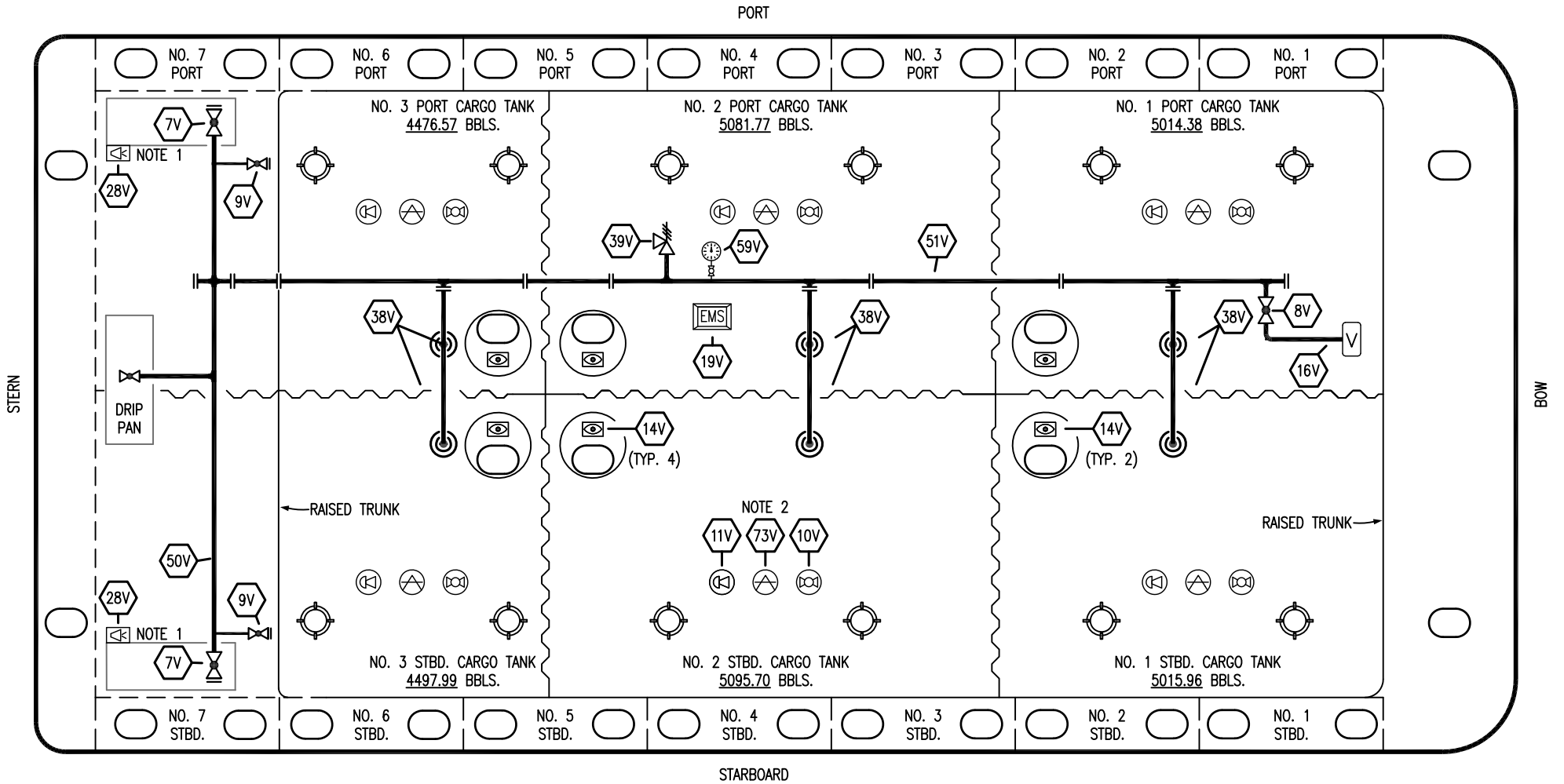
CARGO

PIPING FLOW DIAGRAM

KIRBY 29153

REV. **1**

SCALE: NONE	
PAGE: 1 OF 3	



- | | |
|-----|----------------------------|
| NO | DESCRIPTION |
| 7V | 8" HEADER VALVE |
| 8V | 8" VENT STACK VALVE |
| 9V | DRAIN VALVE |
| 10V | HIGH LEVEL/OVERFILL ALARM |
| 11V | 1-METER GAUGE STICK |
| 16V | VAPOR VENT STACK |
| 19V | EMERGENCY ENGINE SHUT DOWN |
| 28V | DOCK CONNECTION ALARM |

- | | |
|-----|--------------------------|
| NO | DESCRIPTION |
| 38V | 8" VAPOR PENETRATION (⊙) |
| 39V | PRESSURE/VACUUM VALVE |
| 50V | 8" VAPOR HEADER |
| 51V | 8" VAPOR PIPELINE |
| 59V | PRESS/VAC GAUGE |
| 73V | MMC GAUGE POINT |
| — | ABOVE DECK PIPING |

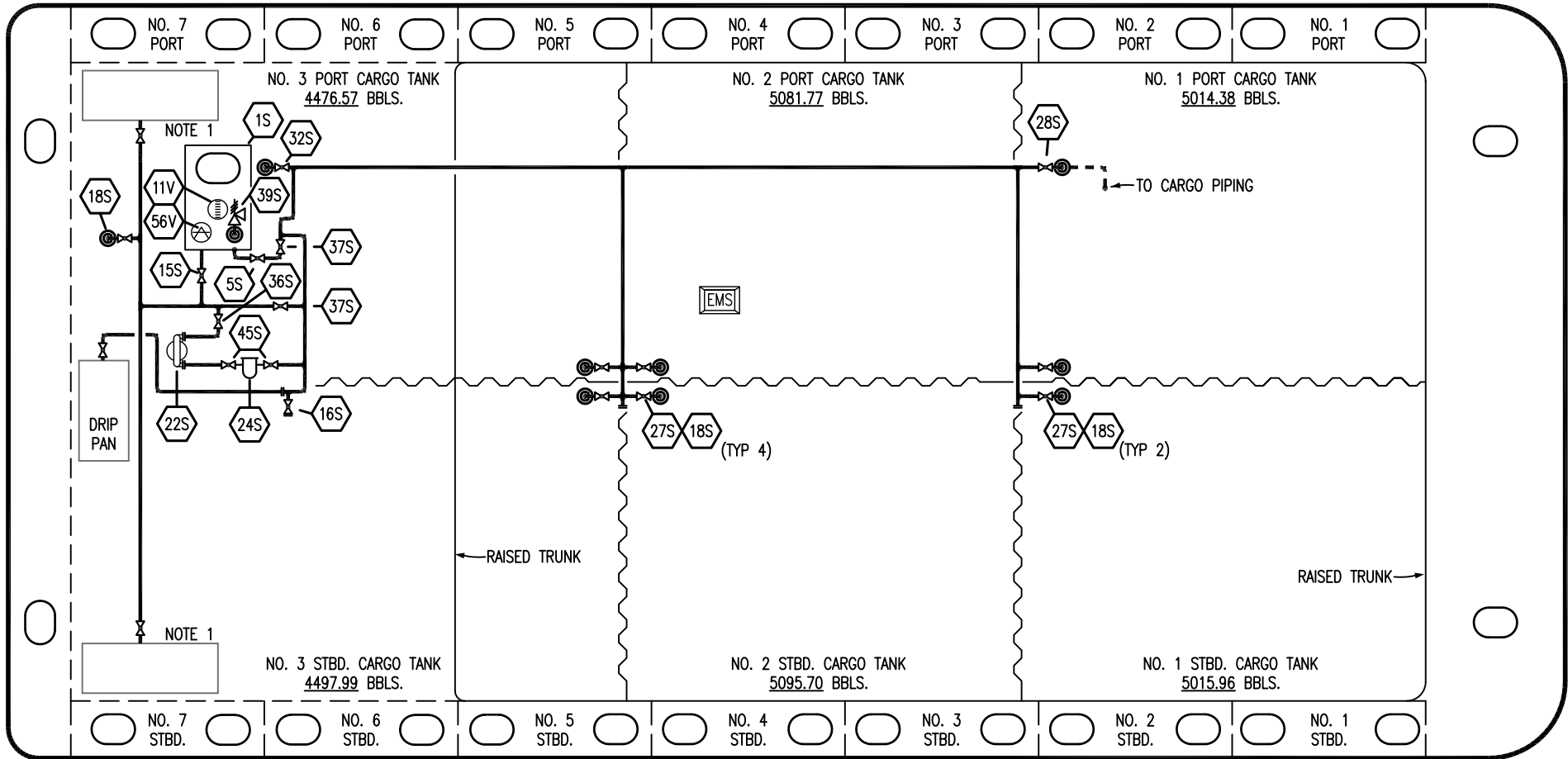
NOTE 2: TYPICAL RIGGING IN EACH TANK
 NOTE 1: CONTAINMENT P/S

EX: SMS 30059

REV.	DATE	BY	CHK	APP	REVISION DESCRIPTION
1	04/22/24	AC	DDA	REM	REVISED PER CLIENT COMMENTS
0	07/14/21	MRV	DDA	CW	ISSUED FOR APPROVAL

KIRBY INLAND MARINE	
VAPOR PIPING FLOW DIAGRAM	
SCALE: NONE	KIRBY 29153
PAGE: 2 OF 3	REV. 1

PORT



STERN

BOW


STARBOARD

NO	DESCRIPTION	NO	DESCRIPTION
1S	SLOP TANK	33S	PUMP WELL SUCTION VALVE
5S	SLOP TANK SUCTION VALVE	34S	DEEPWELL PRIME VALVE
15S	RETURN TO TANK	36S	STRIPPING PUMP DISCHARGE VALVE
16S	REMOTE SUCTION CONNECTION	37S	BLOCK VALVE
18S	STRIPPING DROP	39S	P/V VALVE
22S	STRIPPING PUMP	45S	STRIPPING PUMP SUCTION VALVE
24S	BASKET STRAINER	11V	GAUGE STICK
26S	STRIPPING HEADER BLOCK VALVE	56V	GAUGE POINT
27S	SUMP SUCTION VALVE	—	ABOVE DECK PIPING
28S	CARGO PIPING SUCTION	- - -	BELOW DECK PIPING
32S	PUMP WELL PRIMER VALVE		

NOTE 1: CONTAINMENT P/S

EX: SMS 30059

REV.	DATE	BY	CHK	APP	REVISION DESCRIPTION
1	04/22/24	AC	DDA	REM	REVISED PER CLIENT COMMENTS
0	07/14/21	MRV	DDA	CW	ISSUED FOR APPROVAL



KIRBY INLAND MARINE

**STRIPPING
PIPING FLOW DIAGRAM**

KIRBY 29153

SCALE: NONE	REV. 1
PAGE: 3 OF 3	