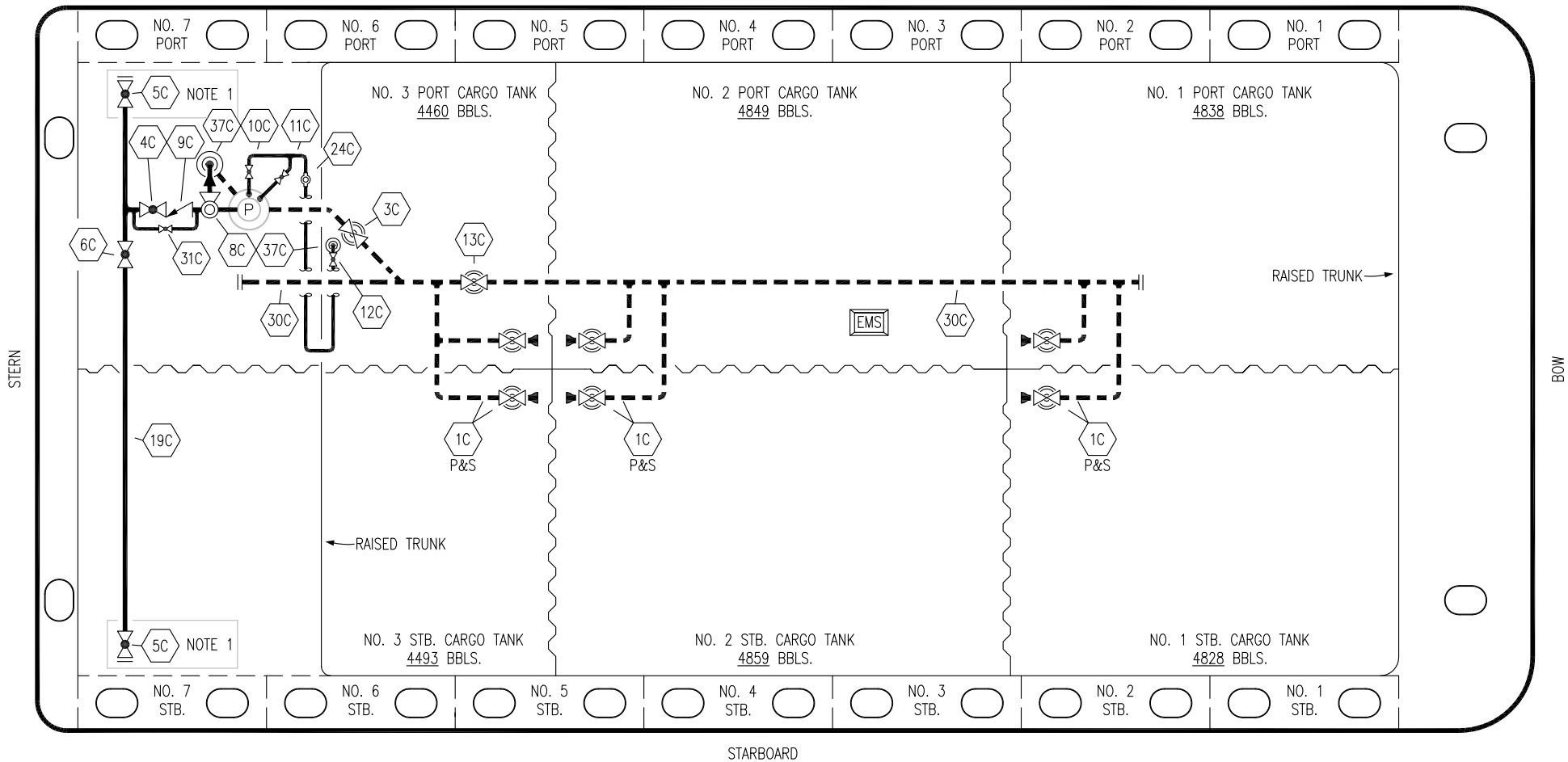


PORT



- | | |
|-----|----------------------|
| NO | DESCRIPTION |
| 1C | CARGO TANK VALVE |
| 3C | MASTER SUCTION VALVE |
| 4C | DISCHARGE VALVE |
| 5C | HEADER VALVE |
| 6C | SALVAGE VALVE |
| 8C | RELIEF VALVE |
| 9C | CHECK VALVE |
| 10C | BURP VALVE |
| 11C | BLEED OFF VALVE |

- | | |
|-----|---------------------------------|
| NO | DESCRIPTION |
| 12C | BURP VALVE RETURN TO CARGO TANK |
| 13C | CARGO PIPING BLOCK VALVE |
| 19C | CARGO HEADER |
| 24C | FLOW INDICATOR |
| 30C | CARGO PIPELINE |
| 31C | BYPASS VALVE |
| 37C | CARGO DROP |
| | ABOVE DECK PIPING |
| | BELOW DECK PIPING |

NOTE 1: CONTAINMENT P/S

REV.	DATE	BY	CHK	APP	REVISION DESCRIPTION
2	04/02/18	WFB	DDA		REVISED PER CLIENT COMMENTS
1	12/08/15	BB	DDA		REVISED PER CLIENT COMMENTS
0	06/18/14	DDA	DDA		ISSUED FOR APPROVAL

KIRBY INLAND MARINE

**CARGO
PIPING FLOW DIAGRAM**

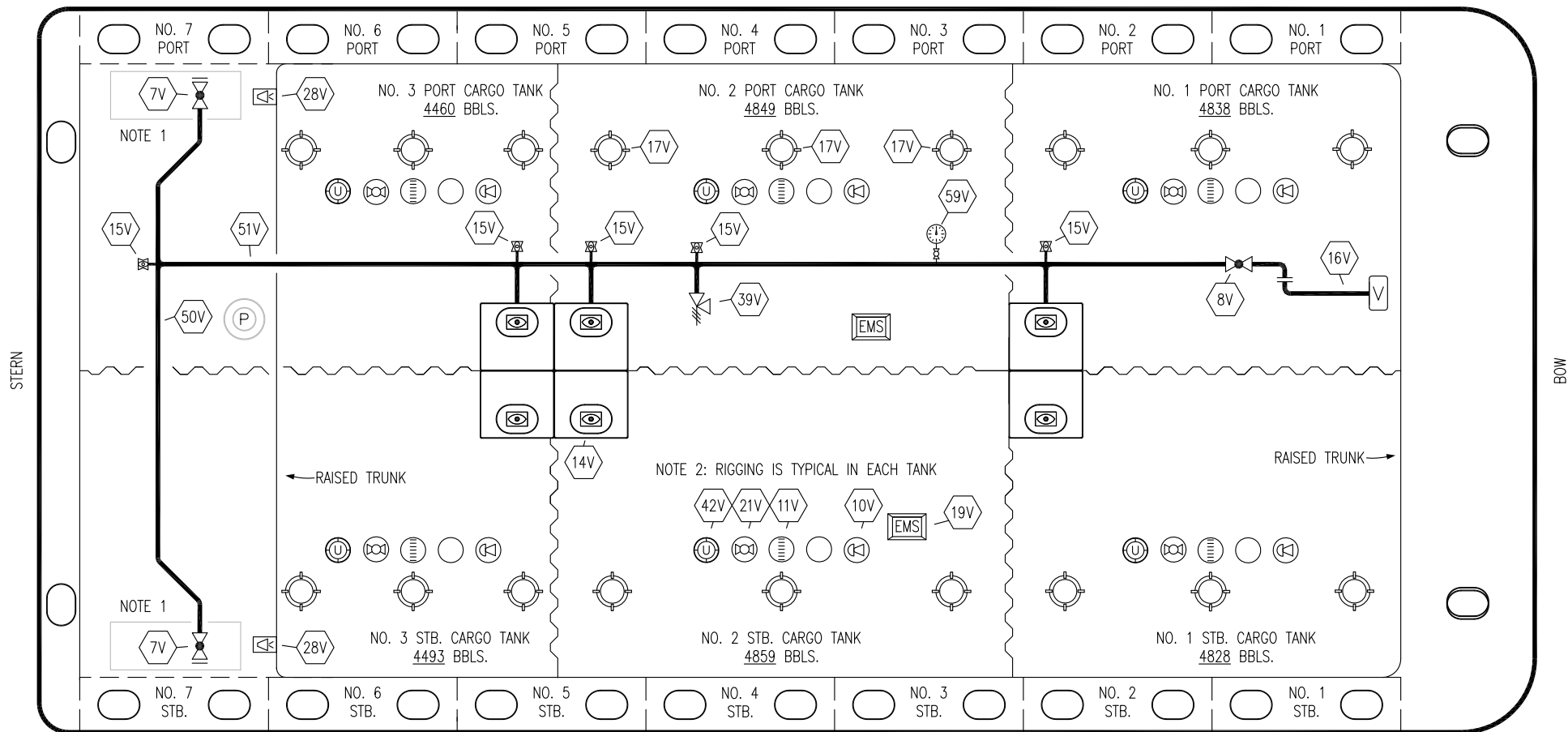
SCALE: NONE
PAGE: 1 OF 3

KIRBY 29138

REV. **2**

TRINITY

PORT



STERN

BOW

STARBOARD

NO	DESCRIPTION	NO	DESCRIPTION
7V	8" HEADER VALVE	21V	2" HERMETIC GAUGE
8V	8" VENT STACK VALVE	28V	DOCK CONNECTION ALARM
10V	8" HIGH LEVEL/OVERFILL ALARM	39V	PRESS/VAC RELIEF VALVE
11V	8" 1-METER STICK GAUGE	42V	8" ULLAGE HATCH
14V	6" SIGHT GLASS W/GAUGE TREE	50V	8" VAPOR HEADER
15V	2" INSPECTION PORT	51V	8" VAPOR PIPELINE
16V	8" VAPOR VENT STACK	59V	PRESS/VAC GAUGE
17V	14" BUTTERWORTH	—	ABOVE DECK PIPING
18V	2" RESTRICTIVE GAUGE TUBE		
19V	EMERGENCY ENGINE SHUT DOWN		

NOTE 1: CONTAINMENT P/S

NOTE 2: RIGGING IS TYPICAL IN EACH TANK

TRINITY

REV.	DATE	BY	CHK	APP	REVISION DESCRIPTION
2	04/02/18	WFB	DDA		REVISED PER CLIENT COMMENTS
1	03/10/15	BB	DDA		REVISED PER CLIENT COMMENTS
0	06/18/14	DDA	DDA		ISSUED FOR APPROVAL

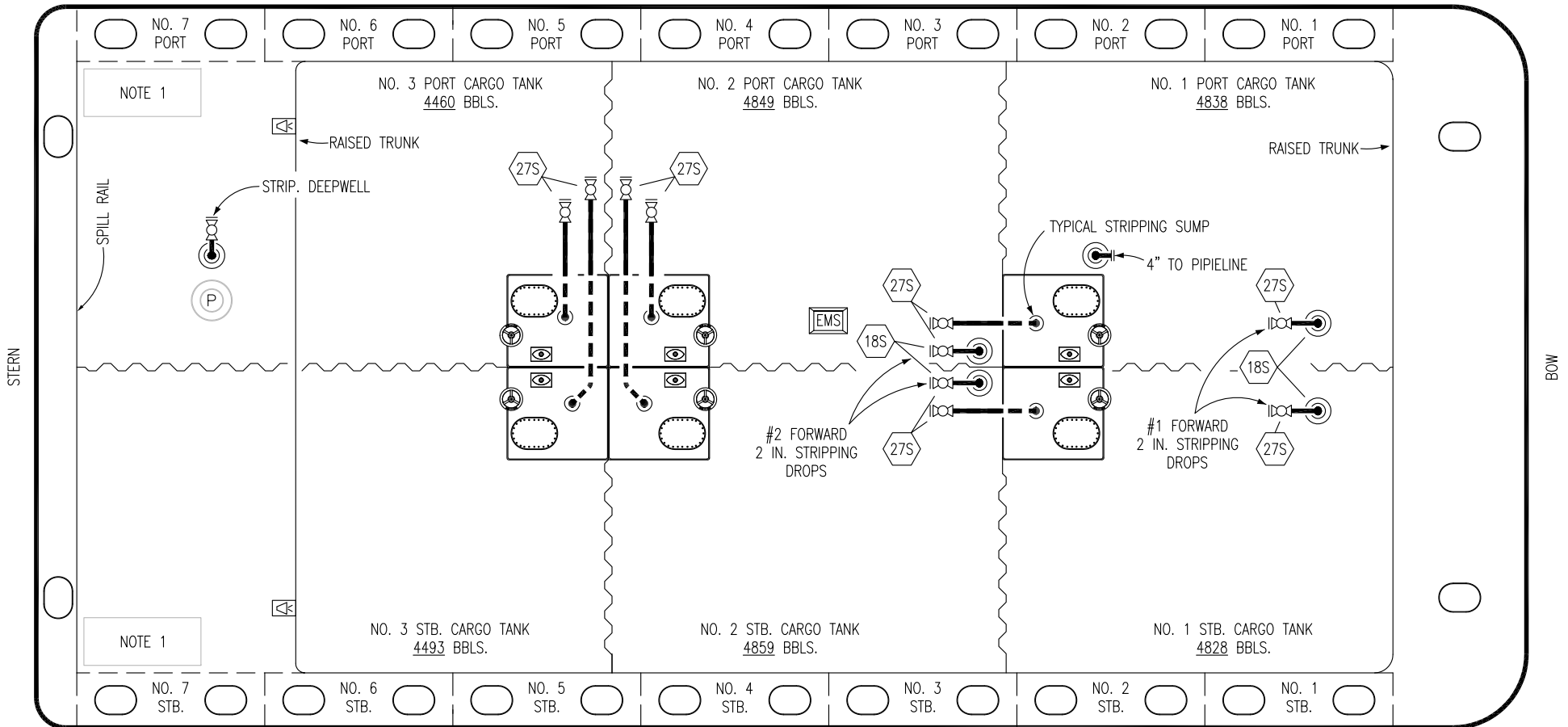
KIRBY INLAND MARINE

VAPOR
PIPING FLOW DIAGRAM

SCALE: NONE	KIRBY 29138
PAGE: 2 OF 3	

REV. 2

PORT



STERN

BOW

STARBOARD

- NO DESCRIPTION
- 18S TYP. STRIPPING DROP
- 27S SUMP SUCTION VALVE
- ABOVE DECK PIPING
- - - BELOW DECK PIPING

NOTE 1: CONTAINMENT P/S

TRINITY

					KIRBY INLAND MARINE	
					STRIPPING	
					PIPING FLOW DIAGRAM	
1	04/02/18	WFB	DDA		REVISED PER CLIENT COMMENTS	
0	06/18/14	DDA	DDA		SCALE: NONE	KIRBY 29138
REV.	DATE	BY	CHK	APP	PAGE: 3 OF 3	
					REV. 1	