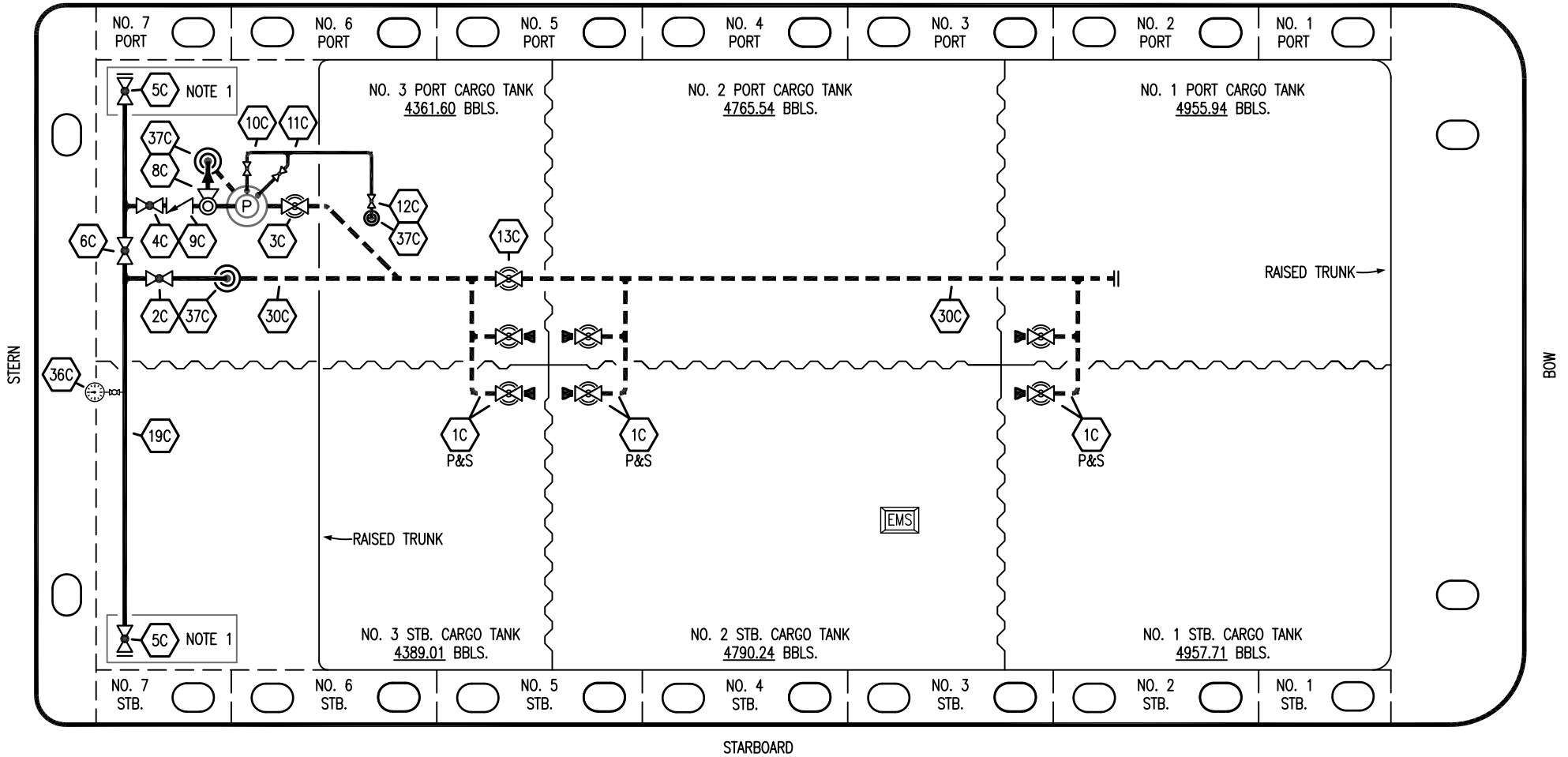


PORT



STARBOARD

- |     |                      |     |                                 |
|-----|----------------------|-----|---------------------------------|
| NO  | DESCRIPTION          | NO  | DESCRIPTION                     |
| 1C  | CARGO TANK VALVE     | 12C | BURP VALVE RETURN TO CARGO TANK |
| 2C  | LOAD VALVE           | 13C | CARGO PIPING BLOCK VALVE        |
| 3C  | MASTER SUCTION VALVE | 19C | CARGO HEADER                    |
| 4C  | DISCHARGE VALVE      | 30C | CARGO PIPELINE                  |
| 5C  | HEADER VALVE         | 36C | PRESSURE GAUGE                  |
| 6C  | SALVAGE VALVE        | 37C | CARGO DROP                      |
| 8C  | RELIEF VALVE         | —   | ABOVE DECK PIPING               |
| 9C  | CHECK VALVE          | --- | BELOW DECK PIPING               |
| 10C | BURP VALVE           |     |                                 |
| 11C | BLEED OFF VALVE      |     |                                 |

NOTE 1: CONTAINMENT P/S

TRINITY

REV.	DATE	BY	CHK	APP	REVISION DESCRIPTION
2	03/27/23	MRV	DDA	FIX	REVISED PER CLIENT COMMENTS
1	12/08/15	BB	DDA		REVISED PER CLIENT COMMENTS
0	06/18/14	DDA	DDA		ISSUED FOR APPROVAL

KIRBY INLAND MARINE

CARGO

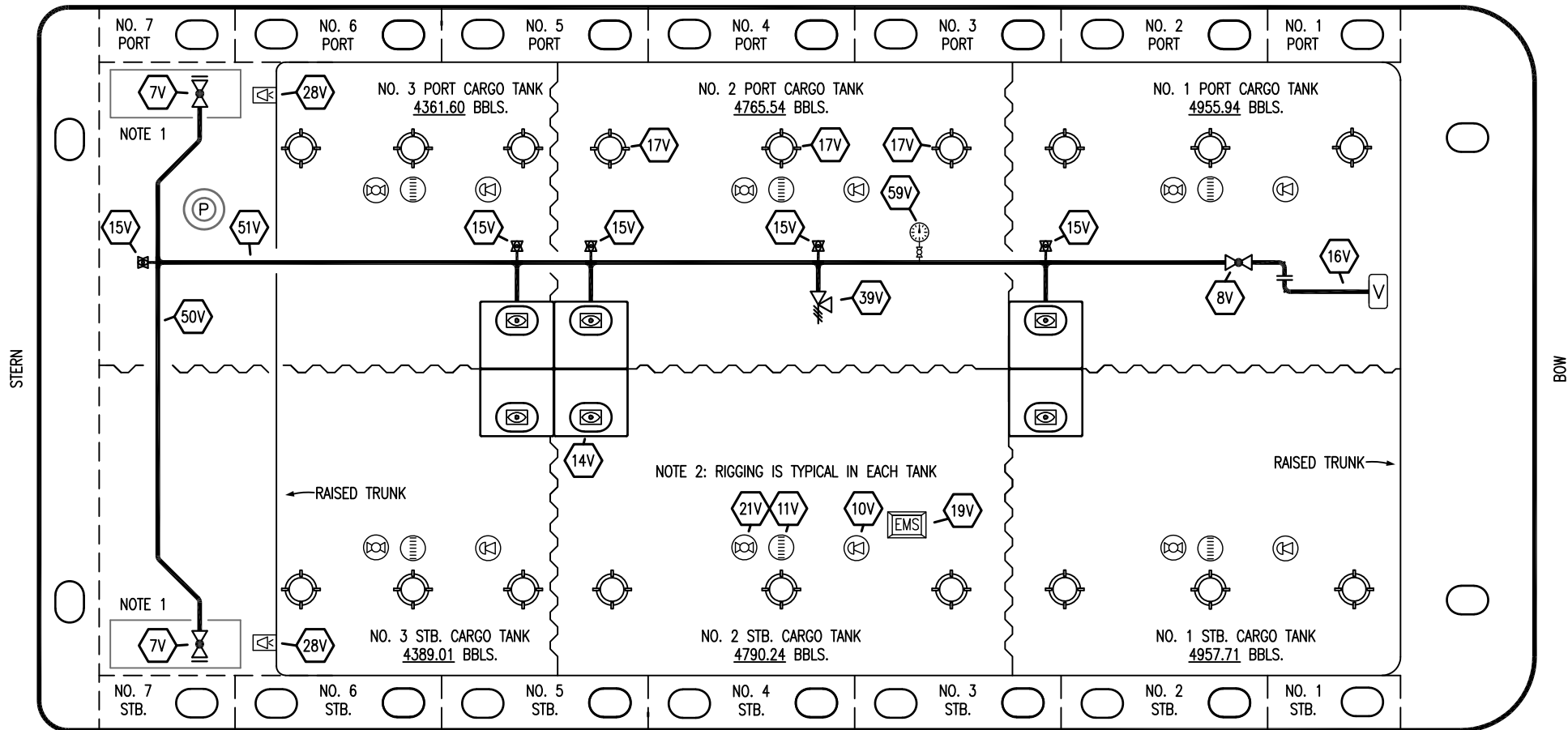
PIPING FLOW DIAGRAM

KIRBY 29134

REV. 2

SCALE: NONE  
PAGE: 1 OF 3

PORT



STERN

BOW

STARBOARD

NO	DESCRIPTION	NO	DESCRIPTION
7V	8" HEADER VALVE	21V	2" HERMETIC GAUGE
8V	8" VENT STACK VALVE	28V	DOCK CONNECTION ALARM
10V	8" HIGH LEVEL/OVERFILL ALARM	39V	PRESS/VAC RELIEF VALVE
11V	8" 1-METER STICK GAUGE	50V	8" VAPOR HEADER
14V	6" SIGHT GLASS W/GAUGE TREE	51V	8" VAPOR PIPELINE
15V	2" INSPECTION PORT	59V	PRESS/VAC GAUGE
16V	8" VAPOR VENT STACK	—	ABOVE DECK PIPING
17V	14" BUTTERWORTH		
18V	2" RESTRICTIVE GAUGE TUBE		
19V	EMERGENCY ENGINE SHUT DOWN		

NOTE 1: CONTAINMENT P/S

NOTE 2: RIGGING IS TYPICAL IN EACH TANK

TRINITY

REV.	DATE	BY	CHK	APP	REVISION DESCRIPTION
2	03/27/23	MRV	DDA	FIX	REVISED PER CLIENT COMMENTS
1	03/10/15	BB	DDA		REVISED PER CLIENT COMMENTS
0	06/18/14	DDA	DDA		ISSUED FOR APPROVAL

**KIRBY INLAND MARINE** 

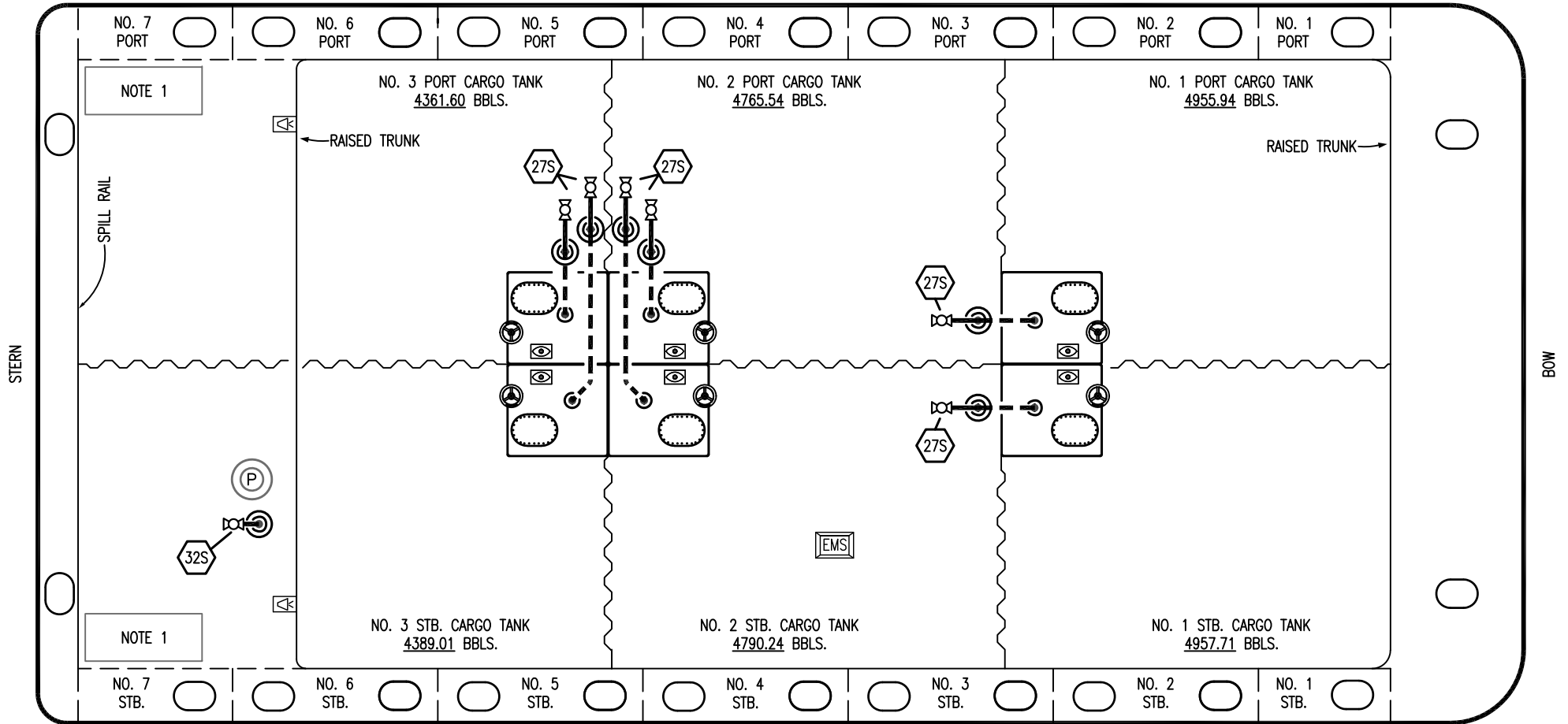
**VAPOR  
PIPING FLOW DIAGRAM**

SCALE: NONE  
PAGE: 2 OF 3

**KIRBY 29134**

REV. **2**

PORT



- |           |                         |
|-----------|-------------------------|
| <b>NO</b> | <b>DESCRIPTION</b>      |
| 18S       | TYP. STRIPPING DROP (⊙) |
| 27S       | SUMP SUCTION VALVE      |
| 32S       | PUMP WELL PRIMER VALVE  |
| —         | ABOVE DECK PIPING       |
| - - -     | BELOW DECK PIPING       |

NOTE 1: CONTAINMENT P/S

TRINITY

1	03/27/23	MRV	DDA	FIX	REVISED PER CLIENT COMMENTS
0	06/18/14	DDA	DDA		ISSUED FOR APPROVAL
REV.	DATE	BY	CHK	APP	REVISION DESCRIPTION

**KIRBY INLAND MARINE** 

**STRIPPING  
PIPING FLOW DIAGRAM**

SCALE: NONE	<b>KIRBY 29134</b>	REV. <b>1</b>
PAGE: 3 OF 3		