





- | | | | |
|-----|----------------------|---|--|
| NO | DESCRIPTION | NO | DESCRIPTION |
| 1C | CARGO TANK VALVE | 12C | BURP VALVE RETURN TO CARGO TANK |
| 2C | LOAD VALVE | 13C | CARGO PIPING BLOCK VALVE |
| 3C | MASTER SUCTION VALVE | 19C | CARGO HEADER |
| 4C | DISCHARGE VALVE | 30C | CARGO PIPELINE |
| 5C | HEADER VALVE | 37C | CARGO DROP  |
| 6C | SALVAGE VALVE |  | ABOVE DECK PIPING |
| 8C | RELIEF VALVE |  | BELOW DECK PIPING |
| 9C | CHECK VALVE | | |
| 10C | BURP VALVE | | |
| 11C | BLEED OFF VALVE | | |

NOTE 1: CONTAINMENT P/S

REV.	DATE	BY	CHK	APP	REVISION DESCRIPTION
2	10/11/22	MRV	DDA	FIX	REVISED PER CLIENT COMMENTS
1	12/08/15	BB	DDA		REVISED PER CLIENT COMMENTS
0	06/18/14	DDA	DDA		ISSUED FOR APPROVAL

TRINITY

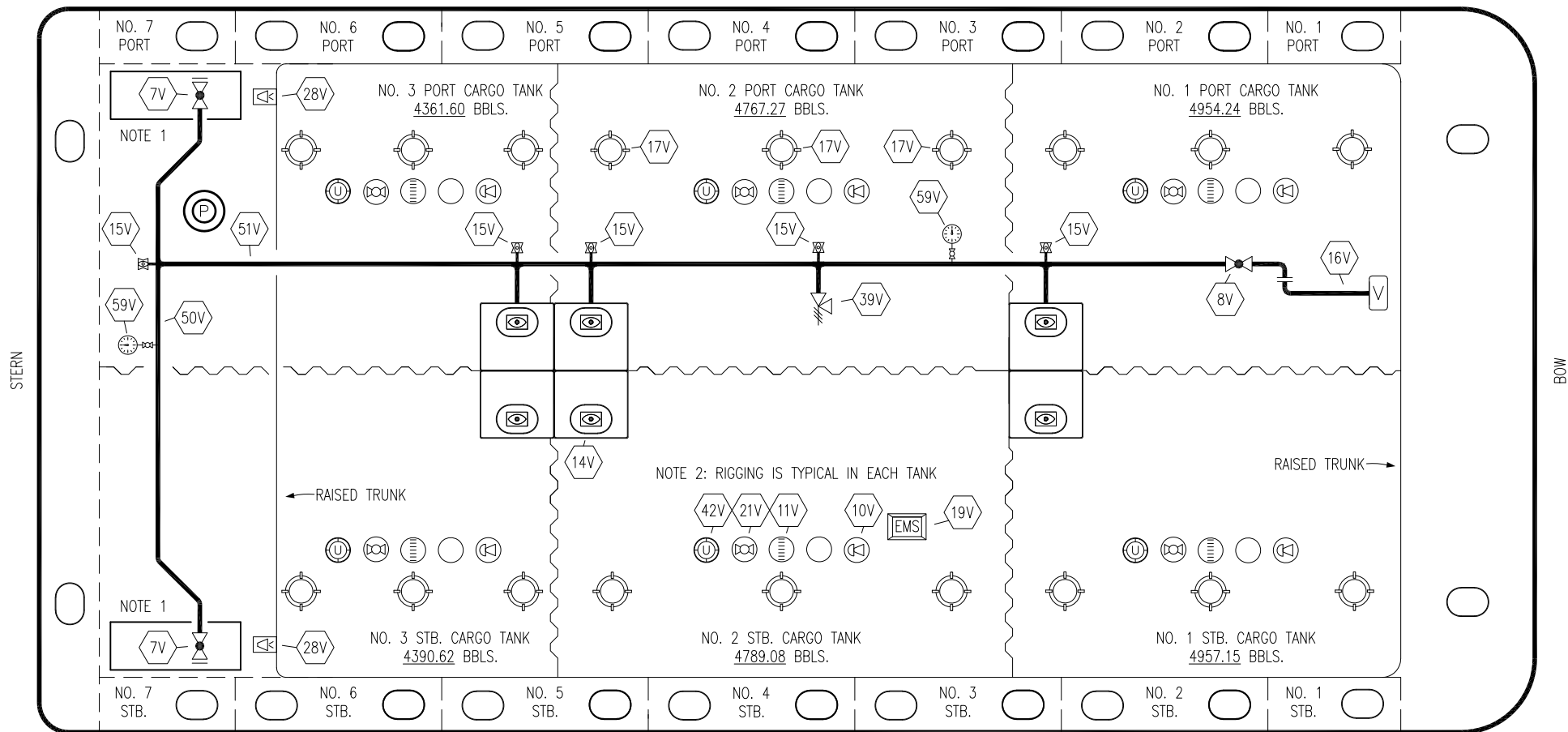
KIRBY INLAND MARINE 

CARGO

PIPING FLOW DIAGRAM

SCALE: NONE	KIRBY 29132	REV. 2
PAGE: 1 OF 3		

PORT



STERN

BOW

STARBOARD

NO	DESCRIPTION	NO	DESCRIPTION
7V	8" HEADER VALVE	21V	2" HERMETIC GAUGE
8V	8" VENT STACK VALVE	28V	DOCK CONNECTION ALARM
10V	8" HIGH LEVEL/OVERFILL ALARM	39V	PRESS/VAC RELIEF VALVE
11V	8" 1-METER STICK GAUGE	42V	8" ULLAGE HATCH
14V	6" SIGHT GLASS W/GAUGE TREE	50V	8" VAPOR HEADER
15V	2" INSPECTION PORT	51V	8" VAPOR PIPELINE
16V	8" VAPOR VENT STACK	59V	PRESS/VAC GAUGE
17V	14" BUTTERWORTH	—	ABOVE DECK PIPING
18V	2" RESTRICTIVE GAUGE TUBE		
19V	EMERGENCY ENGINE SHUT DOWN		

NOTE 1: CONTAINMENT P/S

NOTE 2: RIGGING IS TYPICAL IN EACH TANK

TRINITY

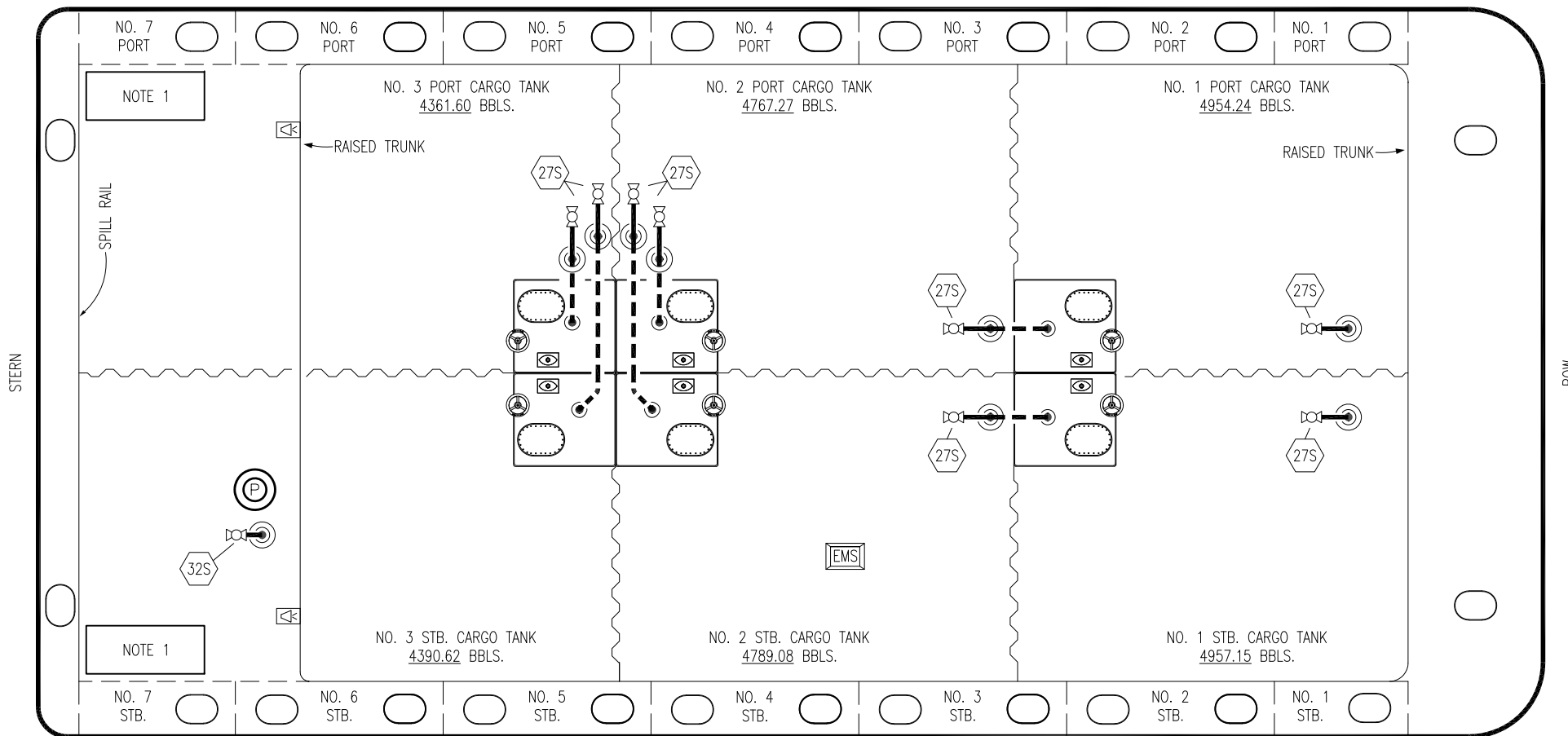
REV.	DATE	BY	CHK	APP	REVISION DESCRIPTION
2	10/11/22	MRV	DDA	FIX	REVISED PER CLIENT COMMENTS
1	03/10/15	BB	DDA		REVISED PER CLIENT COMMENTS
0	06/18/14	DDA	DDA		ISSUED FOR APPROVAL

KIRBY INLAND MARINE

VAPOR
PIPING FLOW DIAGRAM

SCALE: NONE	KIRBY 29132	REV. 2
PAGE: 2 OF 3		

PORT



- NO DESCRIPTION
- 18S TYP. STRIPPING DROP (Symbol: circle with a dot)
 - 27S SUMP SUCTION VALVE (Symbol: hexagon with a circle inside)
 - 32S PUMP WELL PRIMER VALVE (Symbol: hexagon with a circle inside)
 - ABOVE DECK PIPING (Symbol: solid line)
 - - - BELOW DECK PIPING (Symbol: dashed line)

NOTE 1: CONTAINMENT P/S

TRINITY

						KIRBY INLAND MARINE	
						STRIPPING	
						PIPING FLOW DIAGRAM	
1	10/11/22	MRV	DDA	FIX	REVISED PER CLIENT COMMENTS		
0	06/18/14	DDA	DDA		ISSUED FOR APPROVAL		SCALE: NONE
REV.	DATE	BY	CHK	APP	REVISION DESCRIPTION	PAGE: 3 OF 3	KIRBY 29132
							REV. 1