

- | | |
|---------|----------------------|
| NO. 1C | CARGO TANK VALVE |
| NO. 2C | LOAD VALVE |
| NO. 3C | MASTER SUCTION VALVE |
| NO. 4C | DISCHARGE VALVE |
| NO. 5C | HEADER VALVE |
| NO. 6C | SALVAGE VALVE |
| NO. 8C | RELIEF VALVE |
| NO. 9C | CHECK VALVE |
| NO. 10C | BURP VALVE |
| NO. 11C | BLEED OFF VALVE |

- | | |
|---------|---------------------------------|
| NO. 12C | BURP VALVE RETURN TO CARGO TANK |
| NO. 13C | CARGO PIPING BLOCK VALVE |
| NO. 19C | CARGO HEADER |
| NO. 24C | FLOW INDICATOR |
| NO. 30C | CARGO PIPELINE |
| NO. 37C | CARGO DROP |
- ABOVE DECK PIPING
 - - - BELOW DECK PIPING

NOTE 1: CONTAINMENT P/S

REV.	DATE	BY	CHK	APP	REVISION DESCRIPTION
1	12/08/15	BB	DDA		REVISED PER CLIENT COMMENTS
0	08/18/14	DDA	DDA		ISSUED FOR APPROVAL

KIRBY INLAND MARINE



CARGO

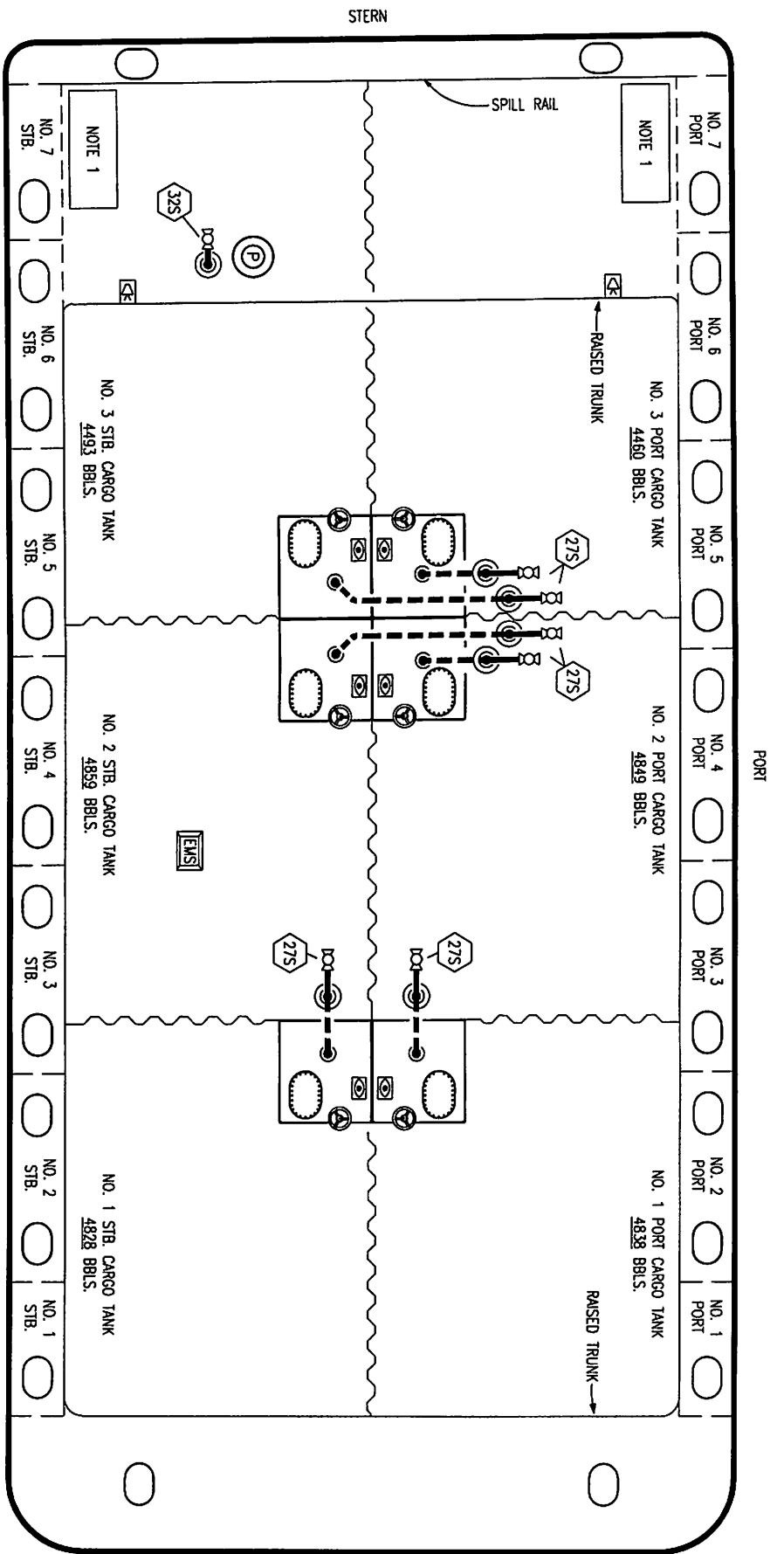
PIPING FLOW DIAGRAM

KIRBY 29131

REV. 1

SCALE: NONE
PAGE: 1 OF 3

TRINITY



REV.	DATE	BY	CHK	APP	REVISION DESCRIPTION
0	06/18/14	DDA	DDA		ISSUED FOR APPROVAL

KIRBY INLAND MARINE

STRIPPING

PIPING FLOW DIAGRAM

KIRBY 29131

SCALE: NONE
PAGE: 3 OF 3

REV. **0**