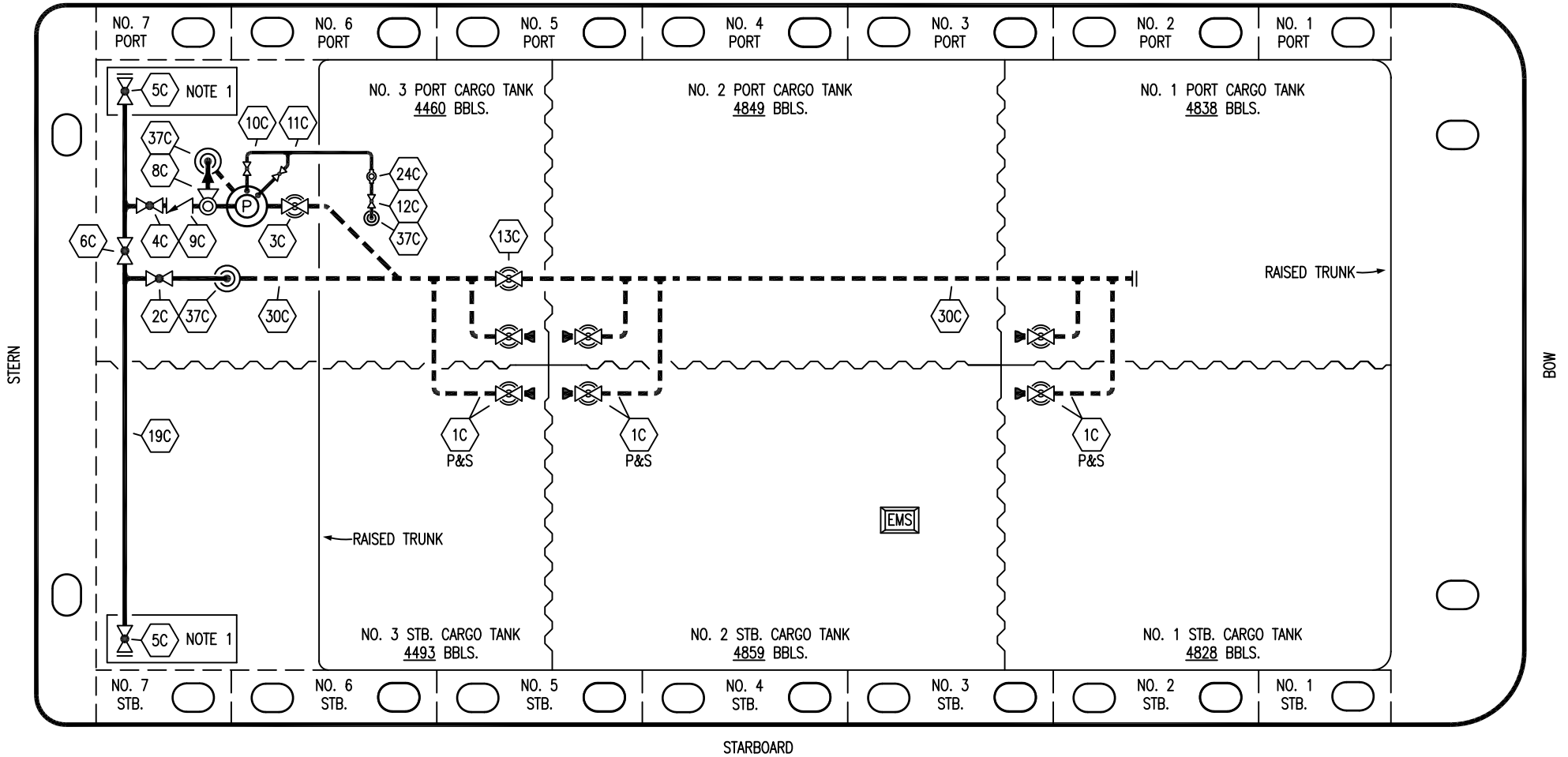


PORT



- | | | | |
|-----|----------------------|-------|---------------------------------|
| NO | DESCRIPTION | NO | DESCRIPTION |
| 1C | CARGO TANK VALVE | 12C | BURP VALVE RETURN TO CARGO TANK |
| 2C | LOAD VALVE | 13C | CARGO PIPING BLOCK VALVE |
| 3C | MASTER SUCTION VALVE | 19C | CARGO HEADER |
| 4C | DISCHARGE VALVE | 24C | FLOW INDICATOR |
| 5C | HEADER VALVE | 30C | CARGO PIPELINE |
| 6C | SALVAGE VALVE | 37C | CARGO DROP |
| 8C | RELIEF VALVE | | |
| 9C | CHECK VALVE | — | ABOVE DECK PIPING |
| 10C | BURP VALVE | - - - | BELOW DECK PIPING |
| 11C | BLEED OFF VALVE | | |

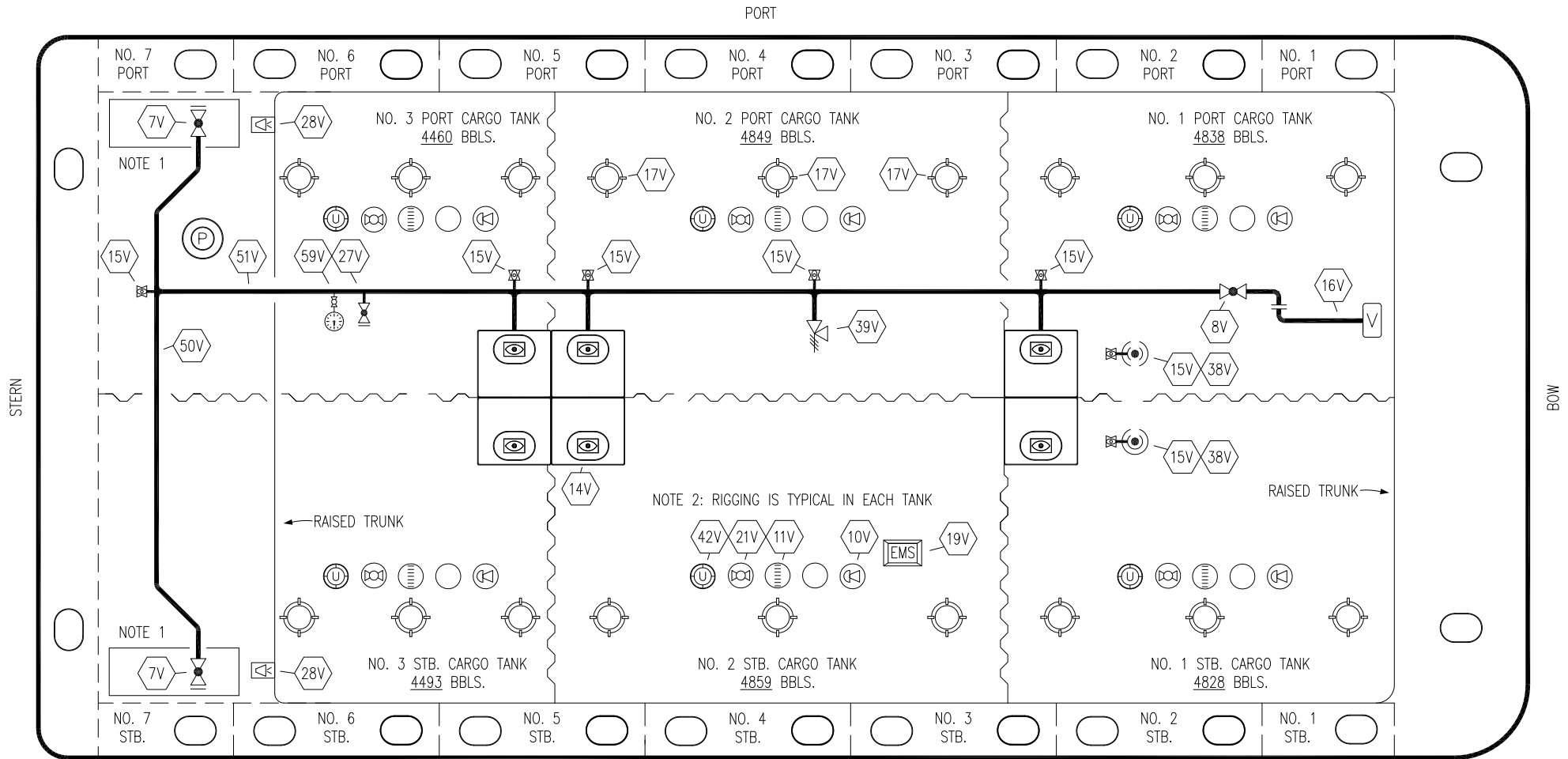
NOTE 1: CONTAINMENT P/S

REV.	DATE	BY	CHK	APP	REVISION DESCRIPTION
1	12/08/15	BB	DDA		REVISED PER CLIENT COMMENTS
0	06/18/14	DDA	DDA		ISSUED FOR APPROVAL

KIRBY INLAND MARINE 

**CARGO
PIPING FLOW DIAGRAM**

TRINITY



NO	DESCRIPTION	NO	DESCRIPTION
7V	8" HEADER VALVE	21V	2" HERMETIC GAUGE
8V	8" VENT STACK VALVE	27V	1/4" TEST CONNECTION VALVE
10V	8" HIGH LEVEL/OVERFILL ALARM	28V	DOCK CONNECTION ALARM
11V	8" 1-METER STICK GAUGE	39V	PRESS/VAC RELIEF VALVE
14V	6" SIGHT GLASS W/GAUGE TREE	42V	8" ULLAGE HATCH
15V	2" INSPECTION PORT	50V	8" VAPOR HEADER
16V	8" VAPOR VENT STACK	51V	8" VAPOR PIPELINE
17V	14" BUTTERWORTH	59V	PRESS/VAC GAUGE
18V	2" RESTRICTIVE GAUGE TUBE	—	ABOVE DECK PIPING
19V	EMERGENCY ENGINE SHUT DOWN		

NOTE 1: CONTAINMENT P/S
 NOTE 2: RIGGING IS TYPICAL IN EACH TANK

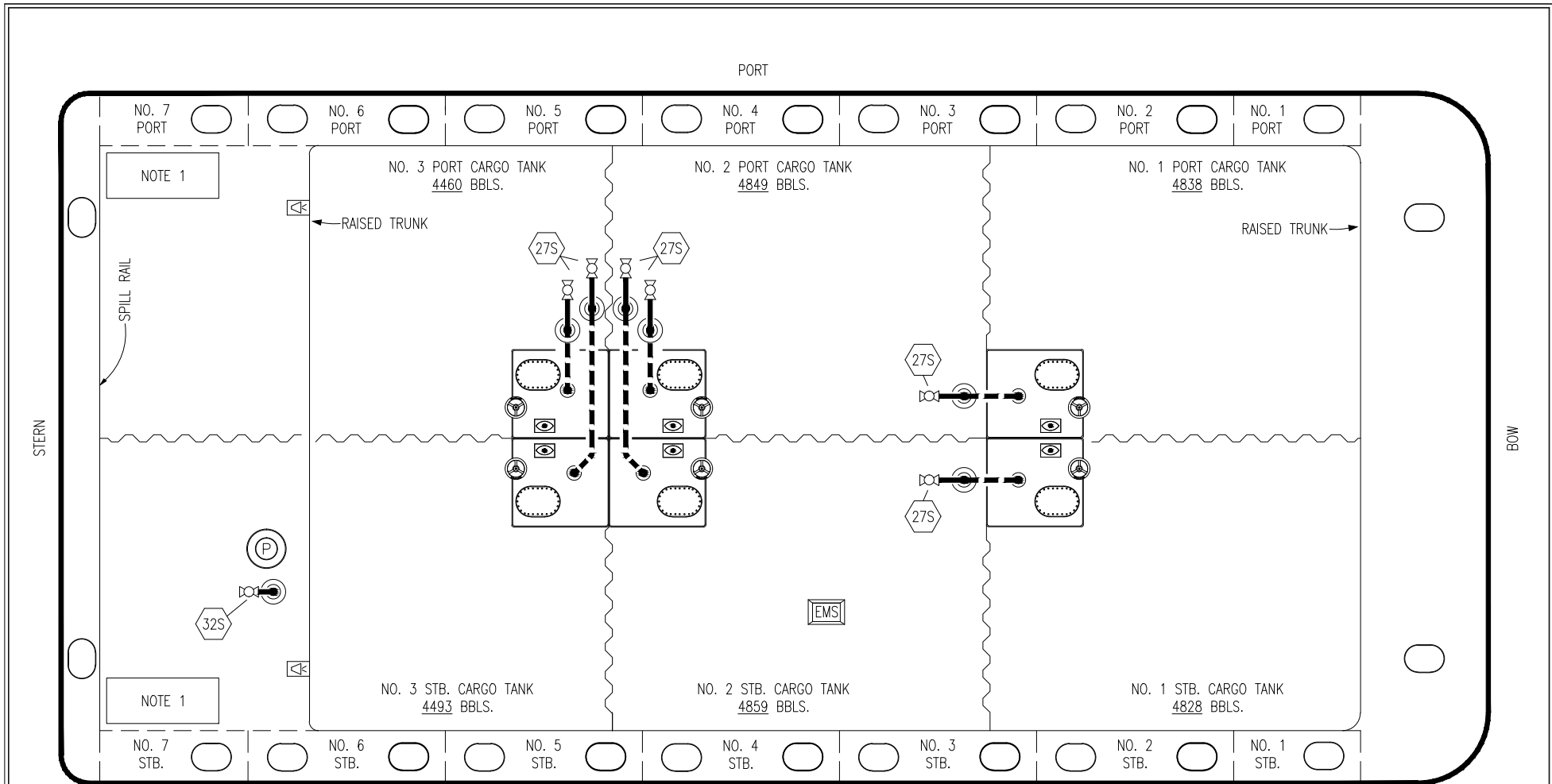
REV.	DATE	BY	CHK	APP	REVISION DESCRIPTION
1	03/10/15	BB	DDA		REVISED PER CLIENT COMMENTS
0	06/18/14	DDA	DDA		ISSUED FOR APPROVAL


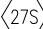
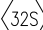


TRINITY

KIRBY INLAND MARINE

**VAPOR
PIPING FLOW DIAGRAM**


SCALE: NONE	KIRBY 29127	REV. 1
PAGE: 2 OF 3		



- | NO | DESCRIPTION |
|---|--|
| 18S | TYP. STRIPPING DROP  |
| 27S | SUMP SUCTION VALVE  |
| 32S | PUMP WELL PRIMER VALVE  |
|  | ABOVE DECK PIPING |
|  | BELOW DECK PIPING |

NOTE 1: CONTAINMENT P/S

TRINITY

						KIRBY INLAND MARINE 							
								STRIPPING PIPING FLOW DIAGRAM					
						0	06/18/14	DDA	DDA	ISSUED FOR APPROVAL	SCALE: NONE	KIRBY 29127	REV. 0
						REV.	DATE	BY	CHK	APP	REVISION DESCRIPTION		