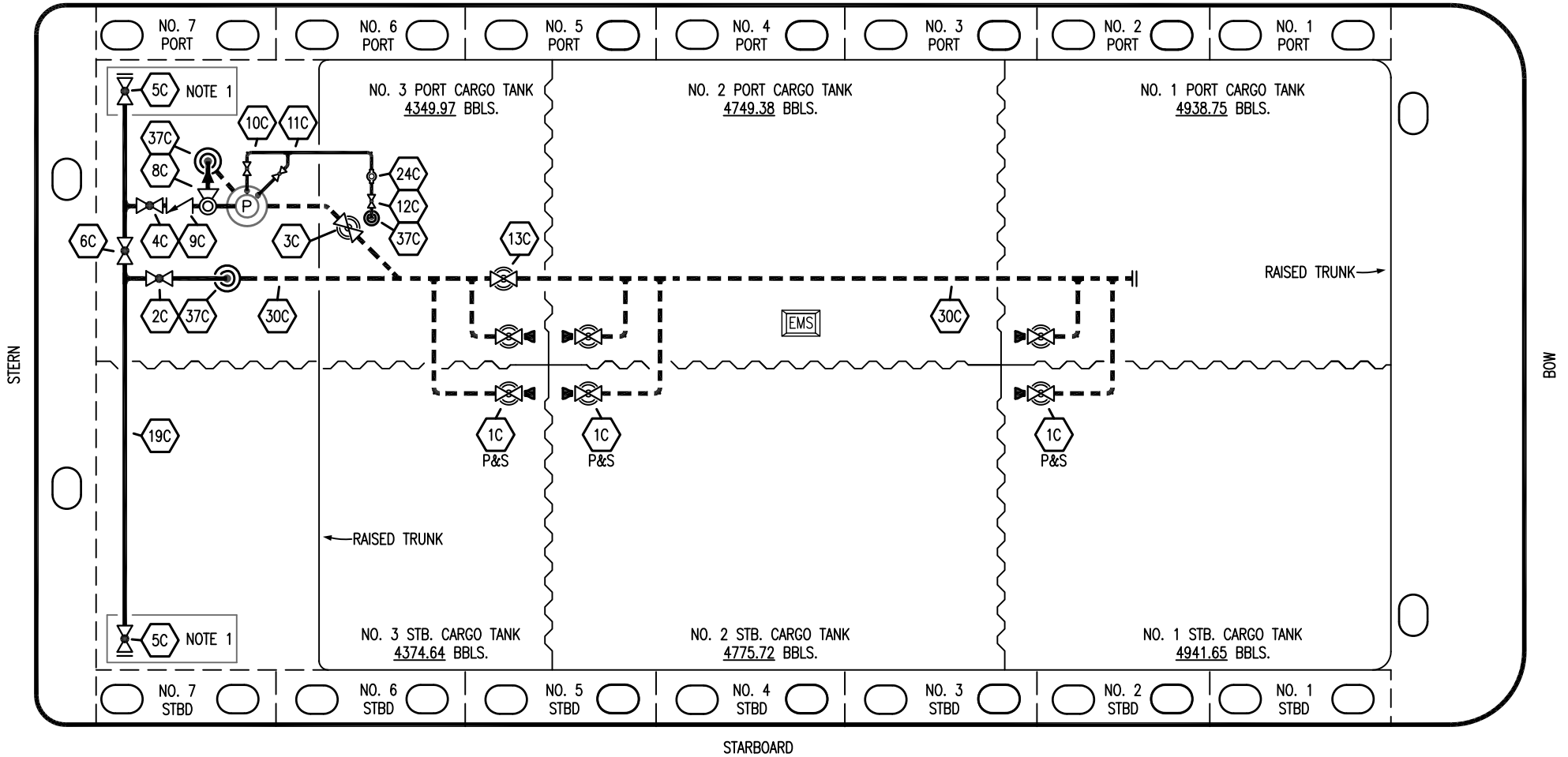


PORT




- | | | | |
|-----|----------------------|-------|---------------------------------|
| NO | DESCRIPTION | NO | DESCRIPTION |
| 1C | CARGO TANK VALVE | 12C | BURP VALVE RETURN TO CARGO TANK |
| 2C | LOAD VALVE | 13C | CARGO PIPING BLOCK VALVE |
| 3C | MASTER SUCTION VALVE | 19C | CARGO HEADER |
| 4C | DISCHARGE VALVE | 24C | FLOW INDICATOR |
| 5C | HEADER VALVE | 30C | CARGO PIPELINE |
| 6C | SALVAGE VALVE | 37C | CARGO DROP |
| 8C | RELIEF VALVE | ⊙ | |
| 9C | CHECK VALVE | — | ABOVE DECK PIPING |
| 10C | BURP VALVE | - - - | BELOW DECK PIPING |
| 11C | BLEED OFF VALVE | | |

NOTE 1: CONTAINMENT P/S

| REV. | DATE | BY | CHK | APP | REVISION DESCRIPTION |
|------|----------|-----|-----|-----|-----------------------------|
| 2 | 02/28/23 | MRV | DDA | DL | REVISED PER CLIENT COMMENTS |
| 1 | 02/04/15 | DDA | DDA | | REVISED PER CLIENT COMMENTS |
| 0 | 06/18/14 | DDA | DDA | | ISSUED FOR APPROVAL |

TRINITY



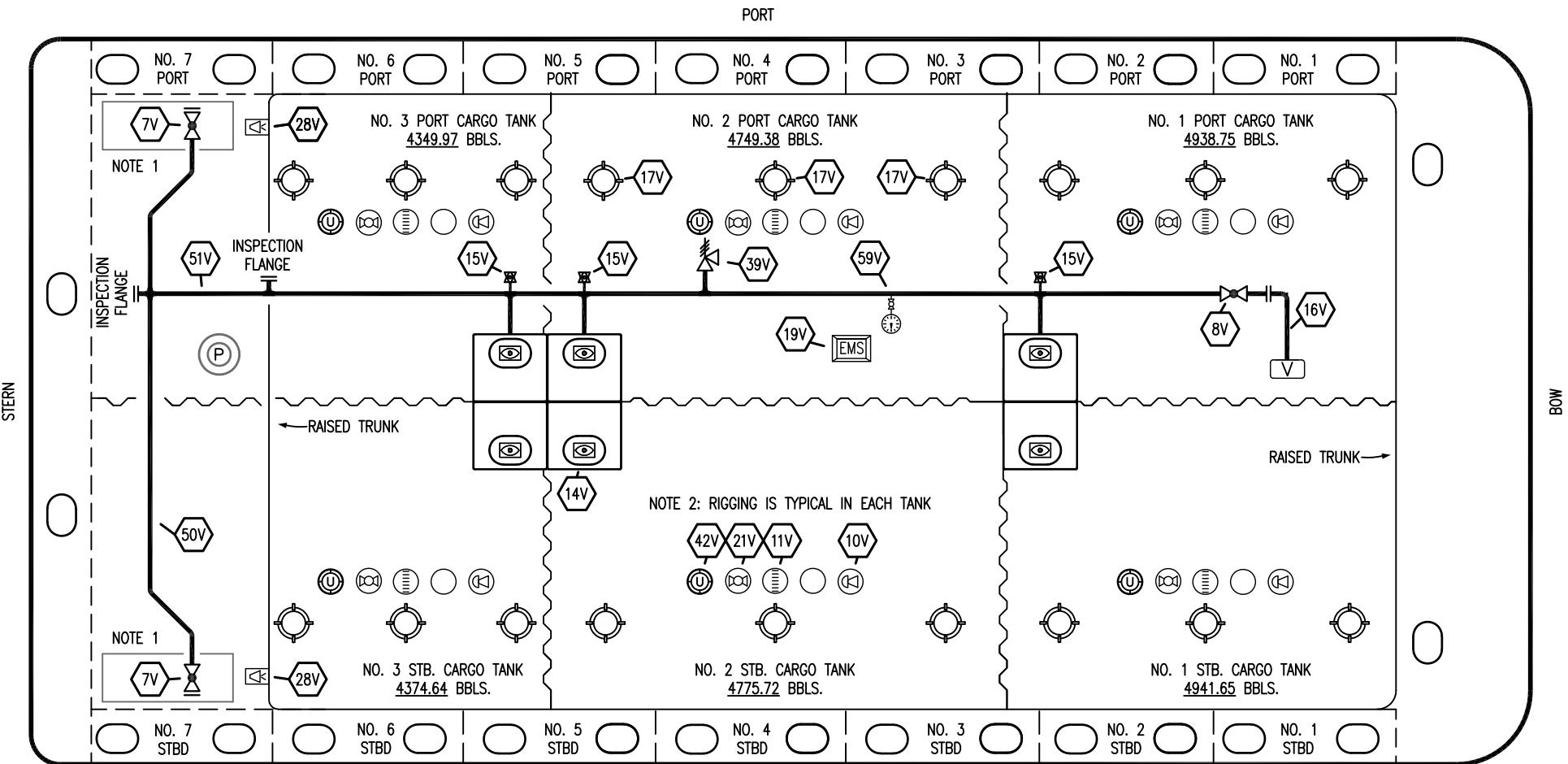
KIRBY INLAND MARINE

CARGO

PIPING FLOW DIAGRAM

KIRBY 29126

| | |
|--------------|--------|
| SCALE: NONE | REV. 2 |
| PAGE: 1 OF 3 | |



| NO | DESCRIPTION | NO | DESCRIPTION |
|-----|------------------------------|-----|----------------------------|
| 7V | 8" HEADER VALVE | 21V | 2" HERMETIC GAUGE |
| 8V | 8" VENT STACK VALVE | 27V | 1/4" TEST CONNECTION VALVE |
| 10V | 8" HIGH LEVEL/OVERFILL ALARM | 28V | DOCK CONNECTION ALARM |
| 11V | 8" 1-METER STICK GAUGE | 38V | 8" VAPOR PENETRATION |
| 14V | 6" SIGHT GLASS W/GAUGE TREE | 39V | PRESS/VAC RELIEF VALVE |
| 15V | 2" INSPECTION PORT | 42V | 8" ULLAGE HATCH |
| 16V | 8" VAPOR VENT STACK | 50V | 8" VAPOR HEADER |
| 17V | 14" BUTTERWORTH | 51V | 8" VAPOR PIPELINE |
| 18V | 2" RESTRICTIVE GAUGE TUBE | 59V | PRESS/VAC GAUGE |
| 19V | EMERGENCY ENGINE SHUT DOWN | — | ABOVE DECK PIPING |

NOTE 1: CONTAINMENT P/S

NOTE 2: RIGGING IS TYPICAL IN EACH TANK

| REV. | DATE | BY | CHK | APP | REVISION DESCRIPTION |
|------|----------|-----|-----|-----|-----------------------------|
| 2 | 02/28/23 | MRV | DDA | DL | REVISED PER CLIENT COMMENTS |
| 1 | 02/04/15 | DDA | DDA | | REVISED PER CLIENT COMMENTS |
| 0 | 06/18/14 | DDA | DDA | | ISSUED FOR APPROVAL |

KIRBY INLAND MARINE 

**VAPOR
PIPING FLOW DIAGRAM**

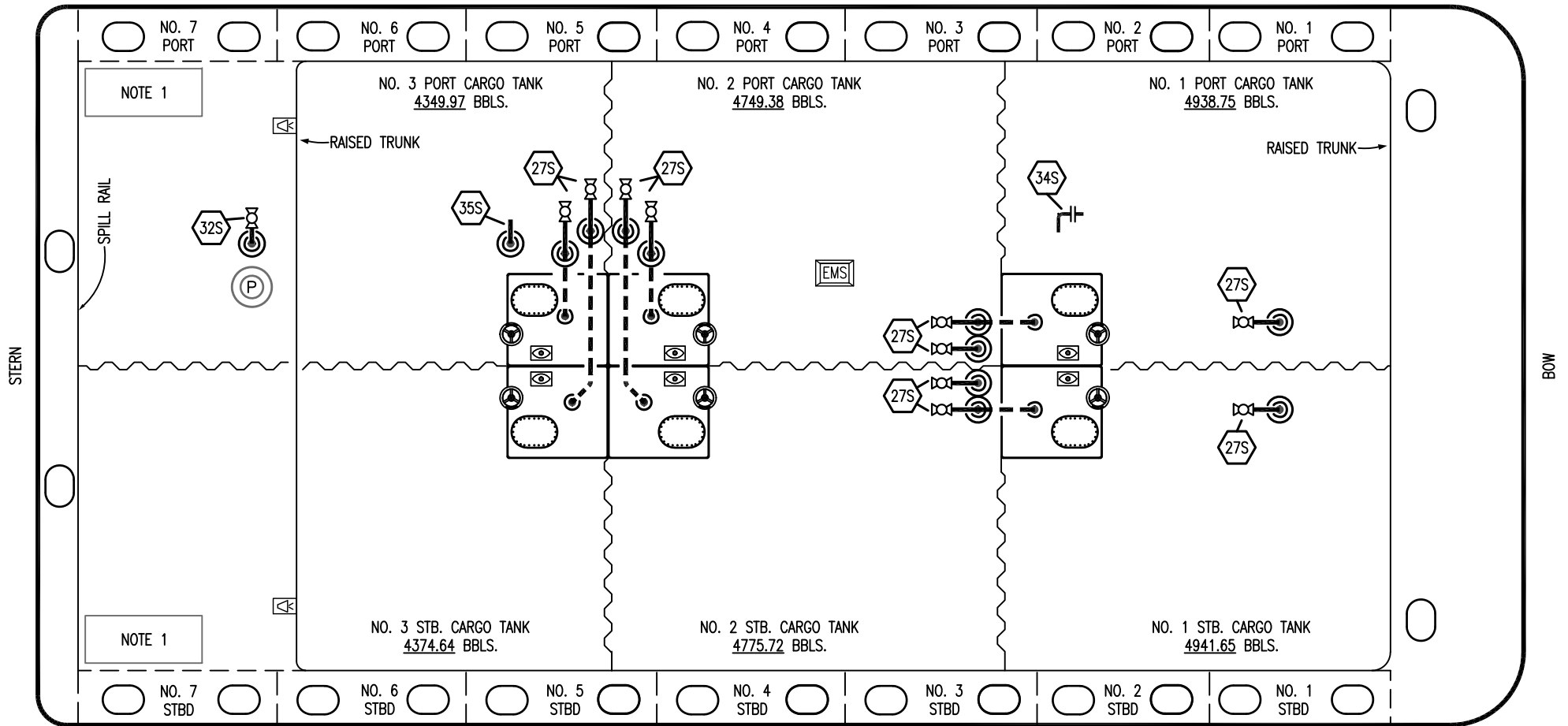
SCALE: NONE
PAGE: 2 OF 3

KIRBY 29126

REV. **2**

TRINITY

PORT



- | NO | DESCRIPTION |
|-------|-------------------------|
| 18S | TYP. STRIPPING DROP (⊙) |
| 27S | SUMP SUCTION VALVE |
| 32S | PUMP WELL PRIMER VALVE |
| 34S | 4" FLANGED SUCTION |
| 35S | 2" SUCTION FOR PIPELINE |
| — | ABOVE DECK PIPING |
| - - - | BELOW DECK PIPING |

NOTE 1: CONTAINMENT P/S

TRINITY

| REV. | DATE | BY | CHK | APP | REVISION DESCRIPTION |
|------|----------|-----|-----|-----|-----------------------------|
| 2 | 02/28/23 | MRV | DDA | DL | REVISED PER CLIENT COMMENTS |
| 1 | 02/04/15 | DDA | DDA | | REVISED PER CLIENT COMMENTS |
| 0 | 06/18/14 | DDA | DDA | | ISSUED FOR APPROVAL |

| | |
|----------------------------|--------------------|
| KIRBY INLAND MARINE | |
| STRIPPING | |
| PIPING FLOW DIAGRAM | |
| SCALE: NONE | KIRBY 29126 |
| PAGE: 3 OF 3 | REV. 2 |