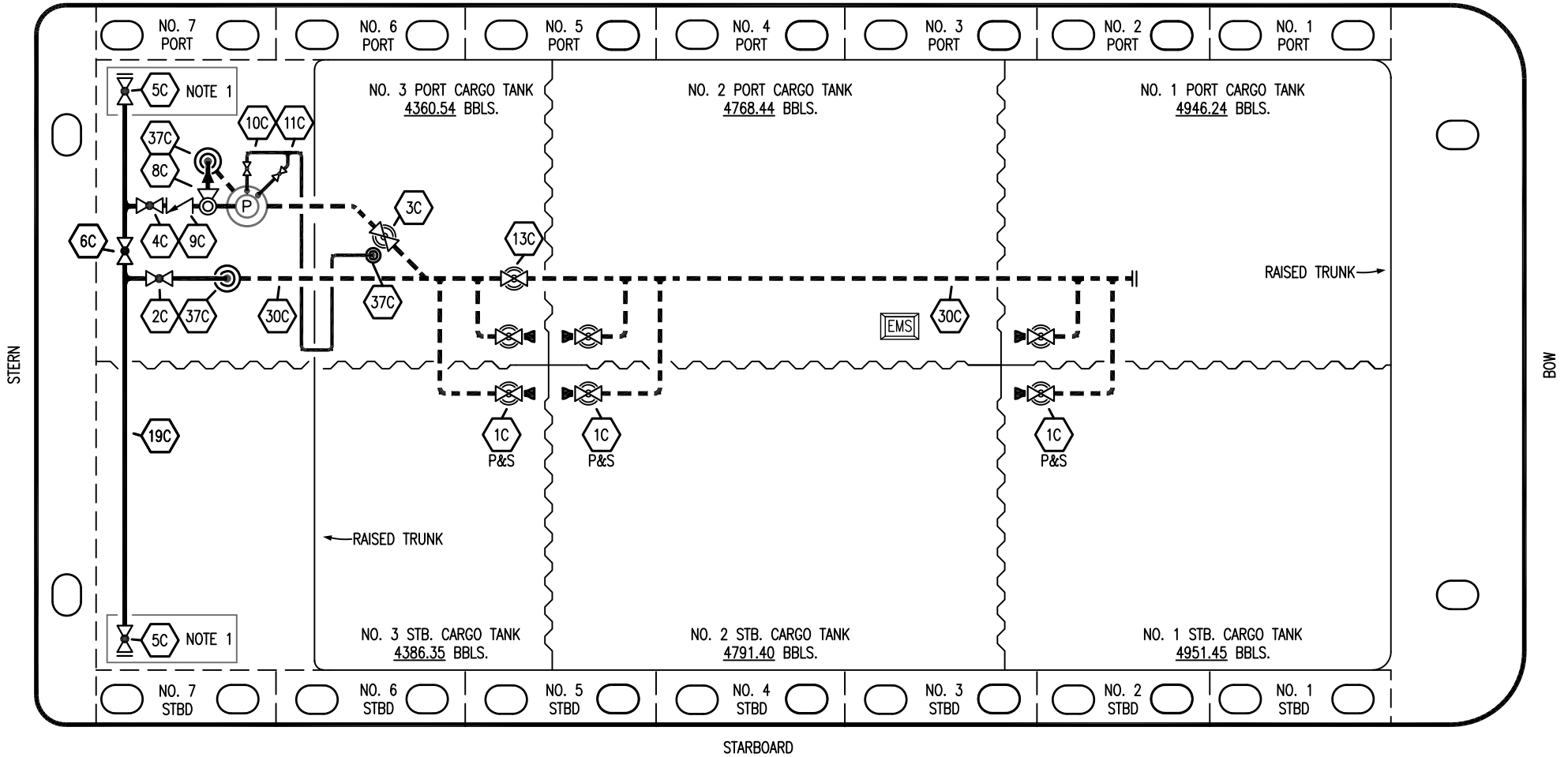


PORT



- | | | | |
|-----|----------------------|-------|--------------------------|
| NO | DESCRIPTION | NO | DESCRIPTION |
| 1C | CARGO TANK VALVE | 11C | BLEED OFF VALVE |
| 2C | LOAD VALVE | 13C | CARGO PIPING BLOCK VALVE |
| 3C | MASTER SUCTION VALVE | 19C | CARGO HEADER |
| 4C | DISCHARGE VALVE | 30C | CARGO PIPELINE |
| 5C | HEADER VALVE | 37C | CARGO DROP |
| 6C | SALVAGE VALVE | — | — ABOVE DECK PIPING |
| 8C | RELIEF VALVE | - - - | - - - BELOW DECK PIPING |
| 9C | CHECK VALVE | | |
| 10C | BURP VALVE | | |

NOTE 1: CONTAINMENT P/S

REV.	DATE	BY	CHK	APP	REVISION DESCRIPTION
3	01/17/23	MRV	DDA	LEP	REVISED PER CLIENT COMMENTS
2	07/15/19	NRB	DDA		REVISED PER CLIENT COMMENTS
1	12/10/14	DDA	DDA		REVISED PER CLIENT COMMENTS
0	06/18/14	DDA	DDA		ISSUED FOR APPROVAL

TRINITY

KIRBY INLAND MARINE

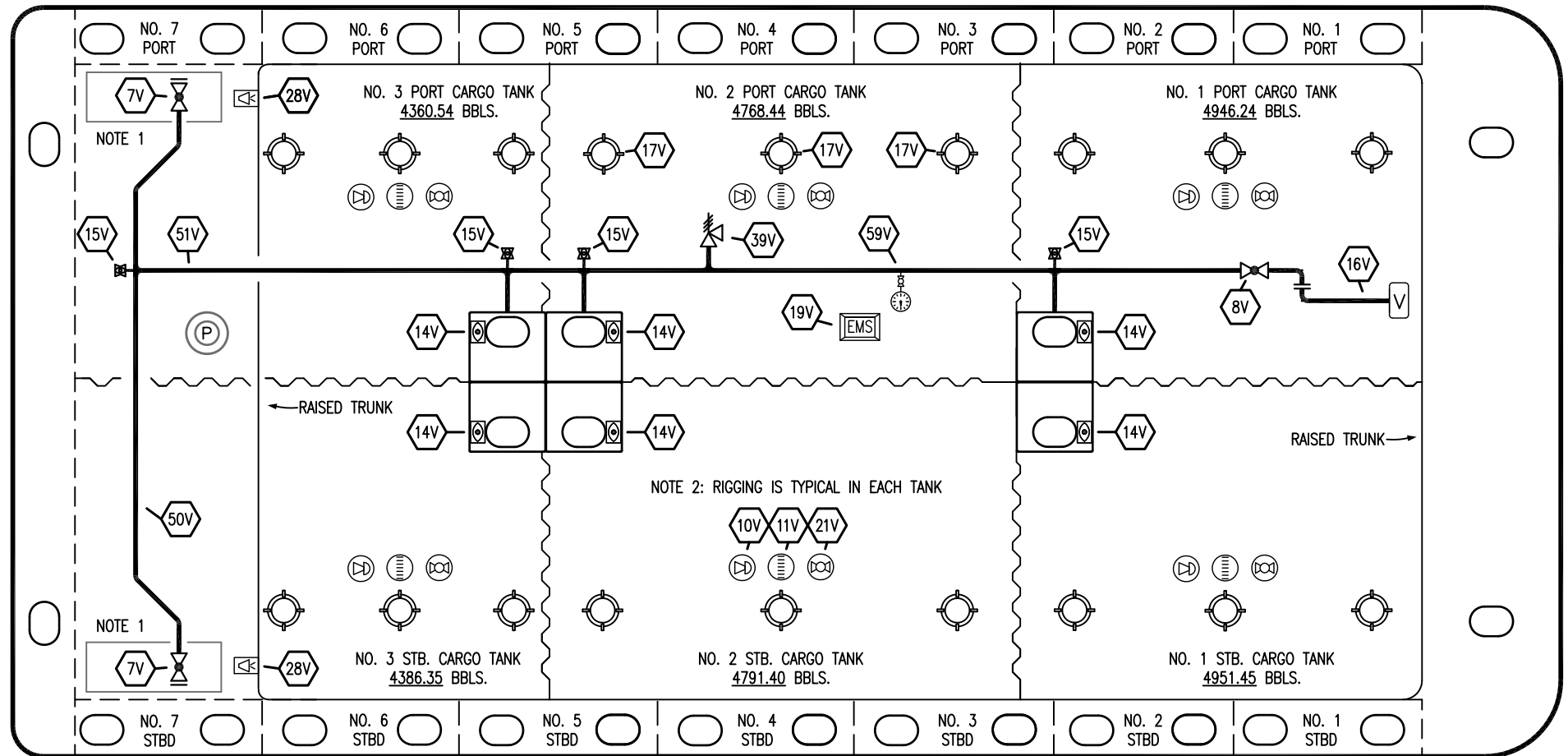
**CARGO
PIPING FLOW DIAGRAM**

KIRBY 29123	REV. 3
SCALE: NONE	PAGE: 1 OF 3

PORT

STERN

BOW



STARBOARD

NO	DESCRIPTION	NO	DESCRIPTION
7V	8" HEADER VALVE	21V	2" HERMETIC GAUGE
8V	8" VENT STACK VALVE	27V	1/4" TEST CONNECTION VALVE
10V	8" HIGH LEVEL/OVERFILL ALARM	28V	DOCK CONNECTION ALARM
11V	8" 1-METER STICK GAUGE	38V	8" VAPOR PENETRATION
14V	8 3/4" SIGHT GLASS W/GAUGE TREE	39V	PRESS/VAC RELIEF VALVE
15V	2" INSPECTION PORT	50V	8" VAPOR HEADER
16V	8" VAPOR VENT STACK	51V	8" VAPOR PIPELINE
17V	20" BUTTERWORTH	59V	PRESS/VAC GAUGE
18V	2" RESTRICTIVE GAUGE TUBE	—	ABOVE DECK PIPING
19V	EMERGENCY ENGINE SHUT DOWN		

NOTE 1: CONTAINMENT P/S
NOTE 2: RIGGING IS TYPICAL IN EACH TANK

TRINITY

REV.	DATE	BY	CHK	APP	REVISION DESCRIPTION
3	01/17/23	MRV	DDA	LEP	REVISED PER CLIENT COMMENTS
2	07/15/19	NRB	DDA		REVISED PER CLIENT COMMENTS
1	12/10/14	DDA	DDA		REVISED PER CLIENT COMMENTS
0	06/18/14	DDA	DDA		ISSUED FOR APPROVAL

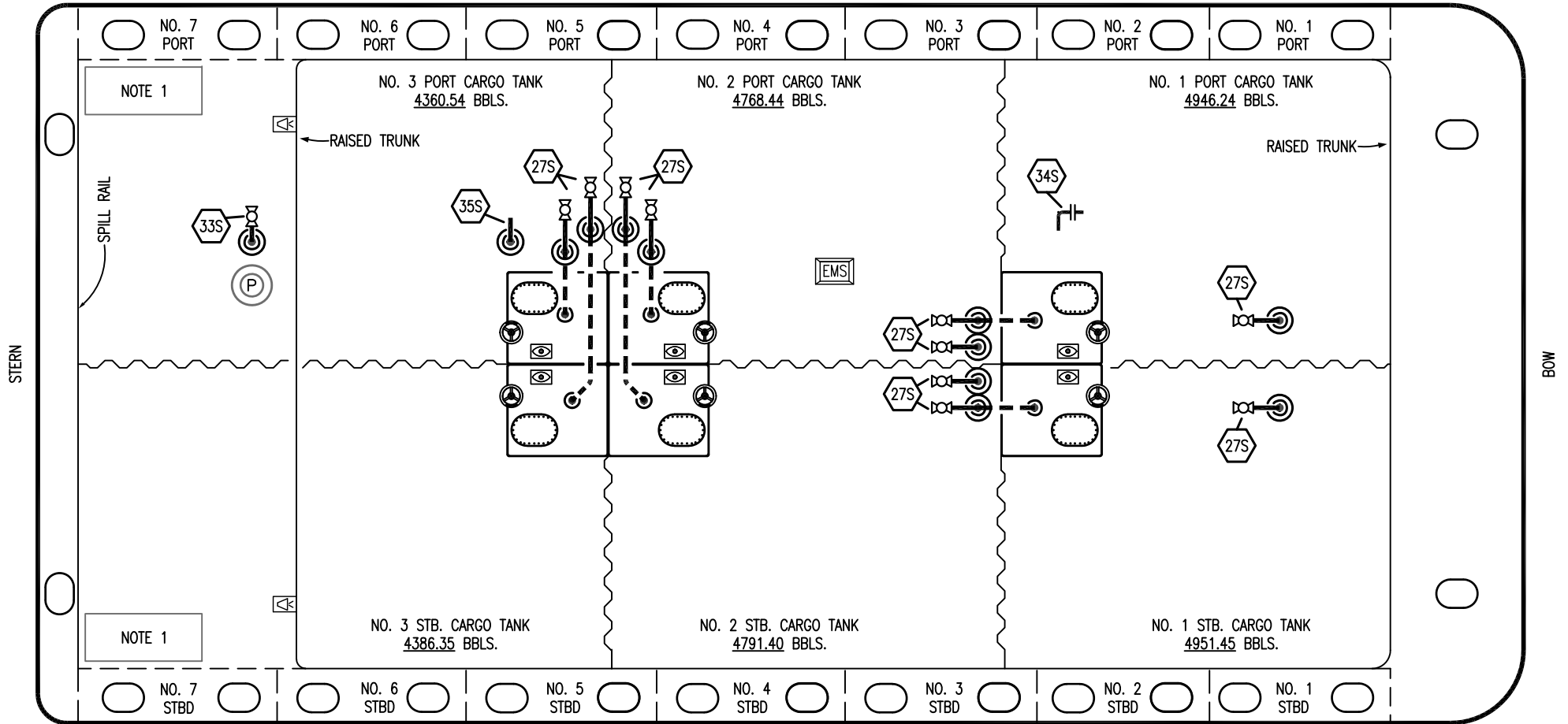
KIRBY INLAND MARINE

**VAPOR
PIPING FLOW DIAGRAM**

SCALE: NONE
PAGE: 2 OF 3

KIRBY 29123 REV. **3**

PORT



- | NO | DESCRIPTION |
|-----|---------------------------|
| 18S | TYP. STRIPPING DROP |
| 27S | SUMP SUCTION VALVE |
| 32S | PUMP WELL STRIPPING VALVE |
| 33S | 2" SUCTION FOR DEEPWELL |
| 34S | 4" FLANGED STUBOUT |
| 35S | 2" STRIPPING FOR PIPELINE |
| | ABOVE DECK PIPING |
| | BELOW DECK PIPING |

NOTE 1: CONTAINMENT P/S

TRINITY

REV.	DATE	BY	CHK	APP	REVISION DESCRIPTION
3	01/17/23	MRV	DDA	LEP	REVISED PER CLIENT COMMENTS
2	07/15/19	NRB	DDA		REVISED PER CLIENT COMMENTS
1	12/10/14	DDA	DDA		REVISED PER CLIENT COMMENTS
0	06/18/14	DDA	DDA		ISSUED FOR APPROVAL

KIRBY INLAND MARINE

**STRIPPING
PIPING FLOW DIAGRAM**

SCALE: NONE
PAGE: 3 OF 3

KIRBY 29123

REV. **3**