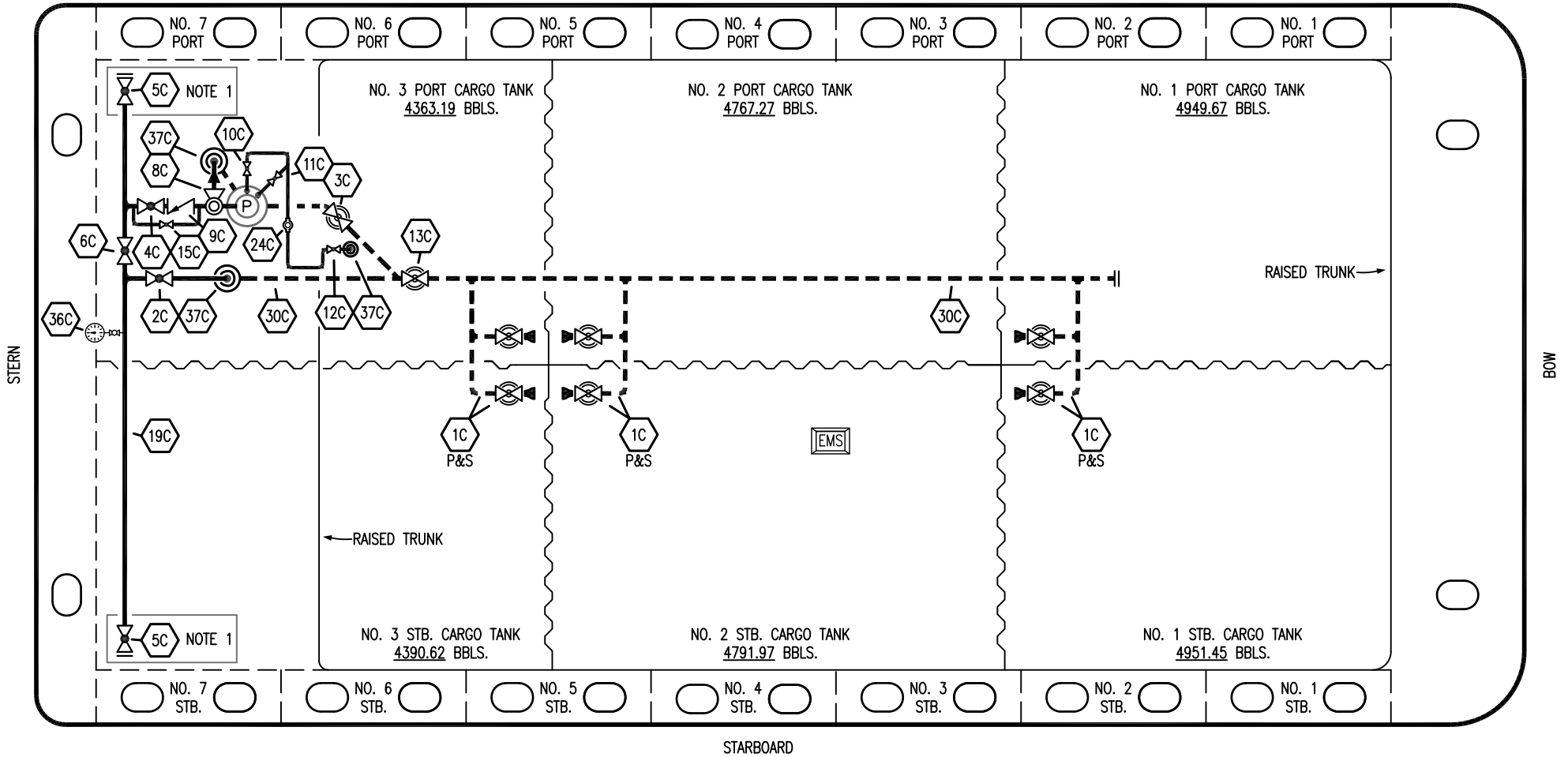


PORT



STARBOARD

- | | | | |
|-----------|----------------------|-----------|---------------------------------|
| NO | DESCRIPTION | NO | DESCRIPTION |
| 1C | CARGO TANK VALVE | 12C | BURP VALVE RETURN TO CARGO TANK |
| 2C | LOAD VALVE | 13C | CARGO PIPING BLOCK VALVE |
| 3C | MASTER SUCTION VALVE | 15C | BYPASS VALVE AROUND CHECK |
| 4C | DISCHARGE VALVE | 19C | CARGO HEADER |
| 5C | HEADER VALVE | 24C | FLOW INDICATOR |
| 6C | SALVAGE VALVE | 30C | CARGO PIPELINE |
| 8C | RELIEF VALVE | 36C | PRESSURE GAUGE |
| 9C | CHECK VALVE | 37C | CARGO DROP |
| 10C | BURP VALVE | — | — ABOVE DECK PIPING |
| 11C | BLEED OFF VALVE | - - - | - - - BELOW DECK PIPING |

NOTE 1: CONTAINMENT P/S

TRINITY

REV.	DATE	BY	CHK	APP	REVISION DESCRIPTION
3	03/01/23	MRV	DDA	FIX	REVISED PER CLIENT COMMENTS
2	02/19/16	WFB	DDA		REVISED PER CLIENT COMMENTS
1	12/08/15	WFB	DDA		REVISED PER CLIENT COMMENTS
0	06/18/14	DDA	DDA		ISSUED FOR APPROVAL

KIRBY INLAND MARINE

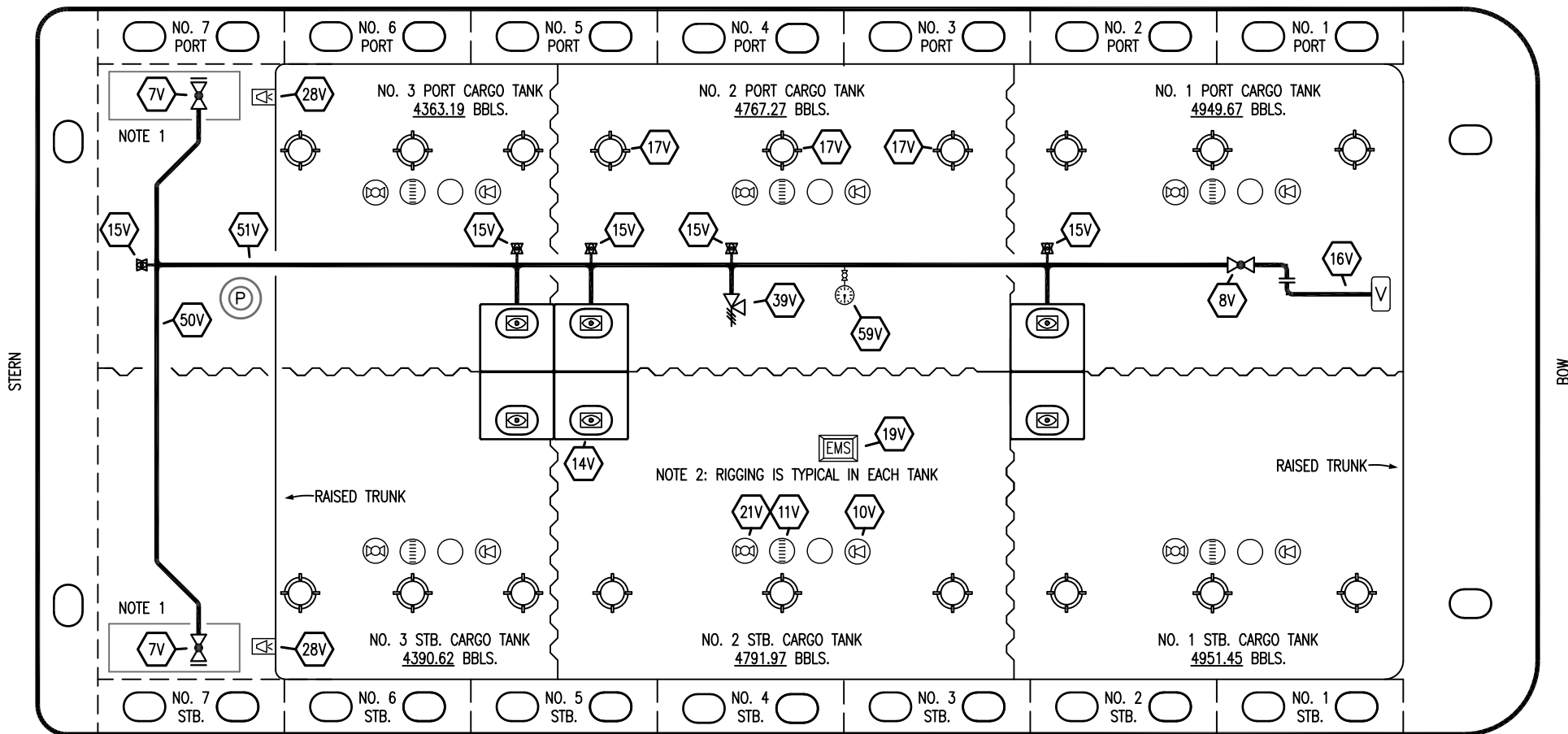
CARGO
PIPING FLOW DIAGRAM

KIRBY 29122

REV. 3

SCALE: NONE
PAGE: 1 OF 3

PORT



STERN

BOW

STARBOARD

NO	DESCRIPTION	NO	DESCRIPTION
7V	8" HEADER VALVE	21V	2" HERMETIC GAUGE
8V	8" VENT STACK VALVE	28V	DOCK CONNECTION ALARM
10V	8" HIGH LEVEL/OVERFILL ALARM	38V	8" VAPOR PENETRATION
11V	8" 1-METER STICK GAUGE	39V	PRESS/VAC RELIEF VALVE
14V	6" SIGHT GLASS W/GAUGE TREE	50V	8" VAPOR HEADER
15V	2" INSPECTION PORT	51V	8" VAPOR PIPELINE
16V	8" VAPOR VENT STACK	59V	PRESS/VAC GAUGE
17V	14" BUTTERWORTH	—	ABOVE DECK PIPING
18V	2" RESTRICTIVE GAUGE TUBE		
19V	EMERGENCY ENGINE SHUT DOWN		

NOTE 1: CONTAINMENT P/S

NOTE 2: RIGGING IS TYPICAL IN EACH TANK

TRINITY

REV.	DATE	BY	CHK	APP	REVISION DESCRIPTION
3	03/01/23	MRV	DDA	FIX	REVISED PER CLIENT COMMENTS
2	02/19/16	WFB	DDA		REVISED PER CLIENT COMMENTS
1	03/10/15	BB	DDA		REVISED PER CLIENT COMMENTS
0	06/18/14	DDA	DDA		ISSUED FOR APPROVAL

KIRBY INLAND MARINE 

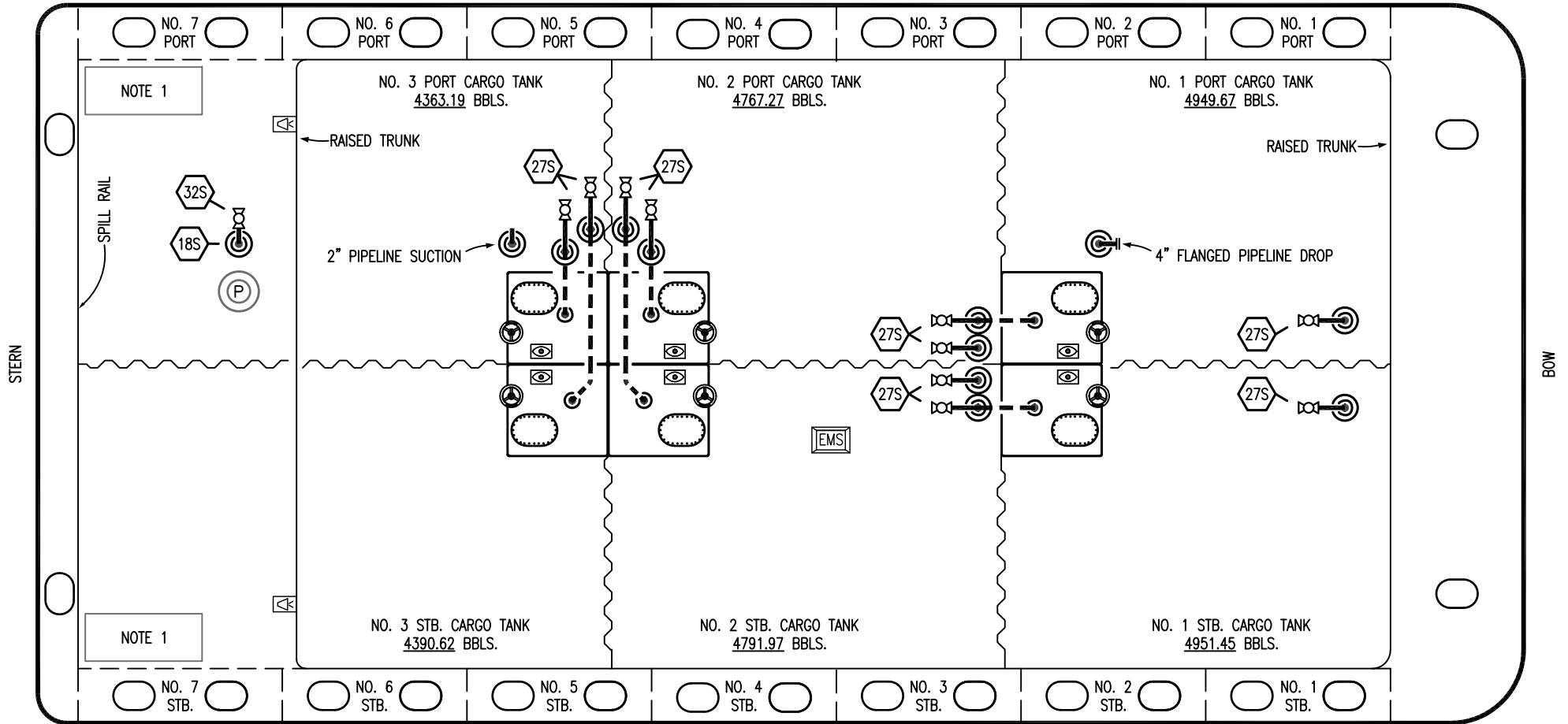
**VAPOR
PIPING FLOW DIAGRAM**

SCALE: NONE
PAGE: 2 OF 3

KIRBY 29122

REV. **3**

PORT



- | | |
|-------|-------------------------|
| NO | DESCRIPTION |
| 18S | TYP. STRIPPING DROP (⊙) |
| 27S | SUMP SUCTION VALVE |
| 32S | PUMP WELL PRIMER VALVE |
| — | ABOVE DECK PIPING |
| - - - | BELOW DECK PIPING |

NOTE 1: CONTAINMENT P/S

TRINITY

2	03/01/23	MRV	DDA	FIX	REVISED PER CLIENT COMMENTS
1	02/19/16	WFB	DDA		REVISED PER CLIENT COMMENTS
0	06/18/14	DDA	DDA		ISSUED FOR APPROVAL
REV.	DATE	BY	CHK	APP	REVISION DESCRIPTION

KIRBY INLAND MARINE 

**STRIPPING
PIPING FLOW DIAGRAM**

SCALE: NONE
PAGE: 3 OF 3

KIRBY 29122 **REV. 2**