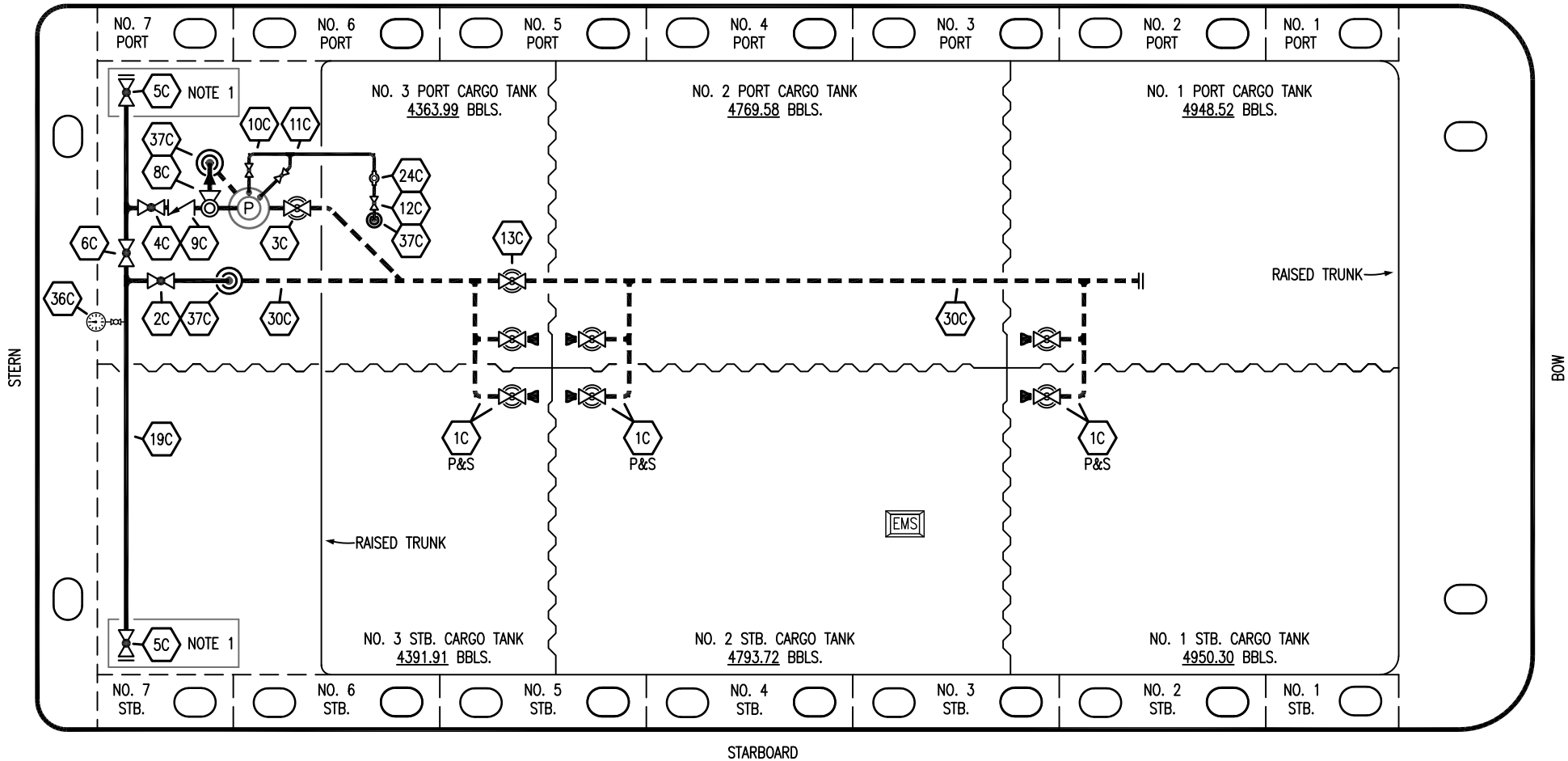


PORT



STERN

BOW

STARBOARD

- NO DESCRIPTION
- 1C CARGO TANK VALVE
- 2C LOAD VALVE
- 3C MASTER SUCTION VALVE
- 4C DISCHARGE VALVE
- 5C HEADER VALVE
- 6C SALVAGE VALVE
- 8C RELIEF VALVE
- 9C CHECK VALVE
- 10C BURP VALVE
- 11C BLEED OFF VALVE

- NO DESCRIPTION
- 12C BURP VALVE RETURN TO CARGO TANK
- 13C CARGO PIPING BLOCK VALVE
- 19C CARGO HEADER
- 24C FLOW INDICATOR
- 30C CARGO PIPELINE
- 36C PRESSURE GAUGE
- 37C CARGO DROP
- ABOVE DECK PIPING
- - - BELOW DECK PIPING

NOTE 1: CONTAINMENT P/S

TRINITY

REV.	DATE	BY	CHK	APP	REVISION DESCRIPTION
2	01/04/23	MRV	DDA	FIX	REVISED PER CLIENT COMMENTS
1	12/08/15	BB	DDA		REVISED PER CLIENT COMMENTS
0	06/18/14	DDA	DDA		ISSUED FOR APPROVAL

**KIRBY INLAND MARINE** 

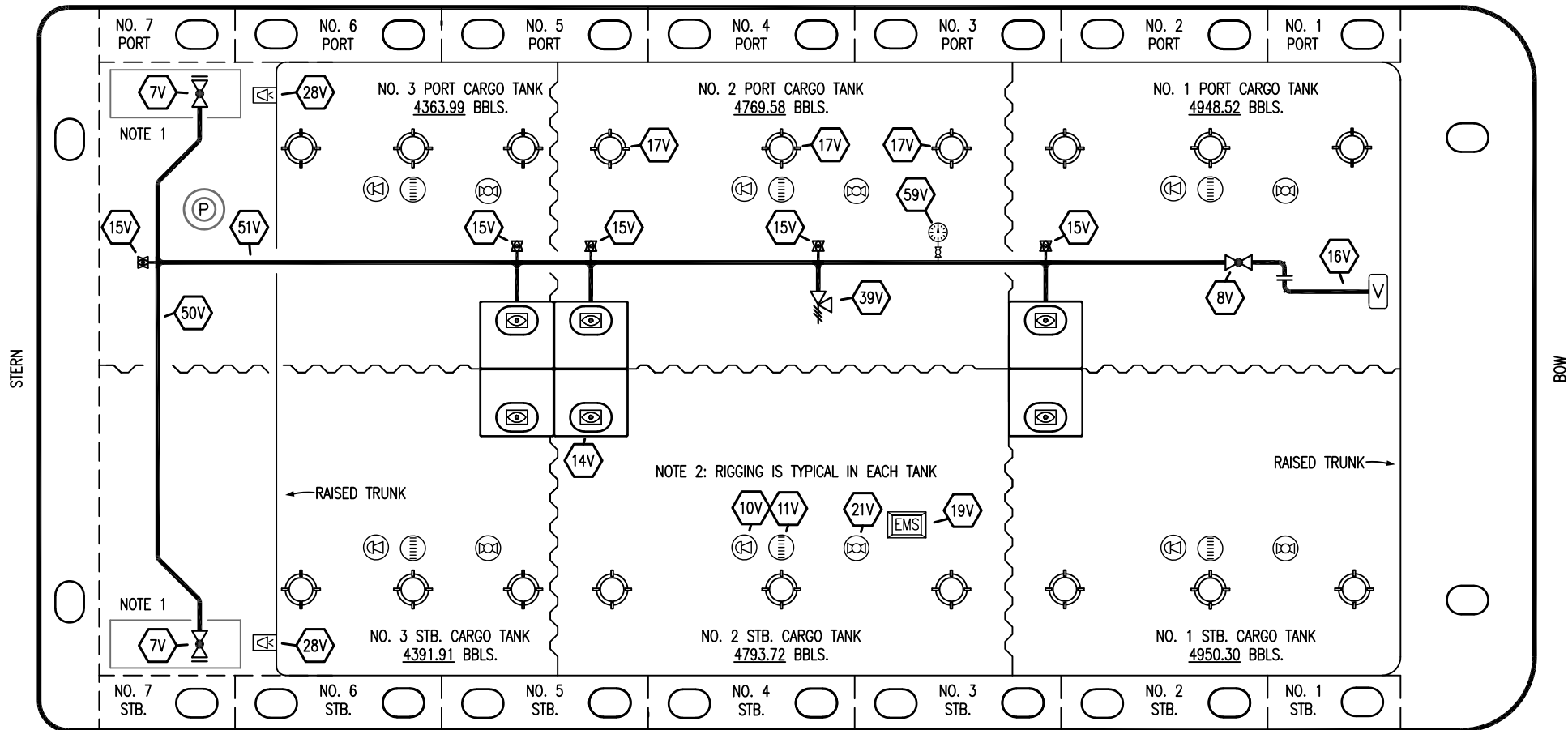
**CARGO  
PIPING FLOW DIAGRAM**

SCALE: NONE  
PAGE: 1 OF 3

**KIRBY 29117**

REV. **2**

PORT



STARBOARD

- |     |                              |     |                            |
|-----|------------------------------|-----|----------------------------|
| NO  | DESCRIPTION                  | NO  | DESCRIPTION                |
| 7V  | 8" HEADER VALVE              | 18V | 2" RESTRICTIVE GAUGE TUBE  |
| 8V  | 8" VENT STACK VALVE          | 19V | EMERGENCY ENGINE SHUT DOWN |
| 10V | 8" HIGH LEVEL/OVERFILL ALARM | 21V | 2" HERMETIC GAUGE          |
| 11V | 8" 1-METER STICK GAUGE       | 28V | DOCK CONNECTION ALARM      |
| 14V | 6" SIGHT GLASS W/GAUGE TREE  | 39V | PRESS/VAC RELIEF VALVE     |
| 15V | 2" INSPECTION PORT           | 50V | 8" VAPOR HEADER            |
| 16V | 8" VAPOR VENT STACK          | 51V | 8" VAPOR PIPELINE          |
| 17V | 14" BUTTERWORTH              | 59V | PRESS/VAC GAUGE            |
|     |                              |     | — ABOVE DECK PIPING        |

NOTE 1: CONTAINMENT P/S

NOTE 2: RIGGING IS TYPICAL IN EACH TANK

TRINITY

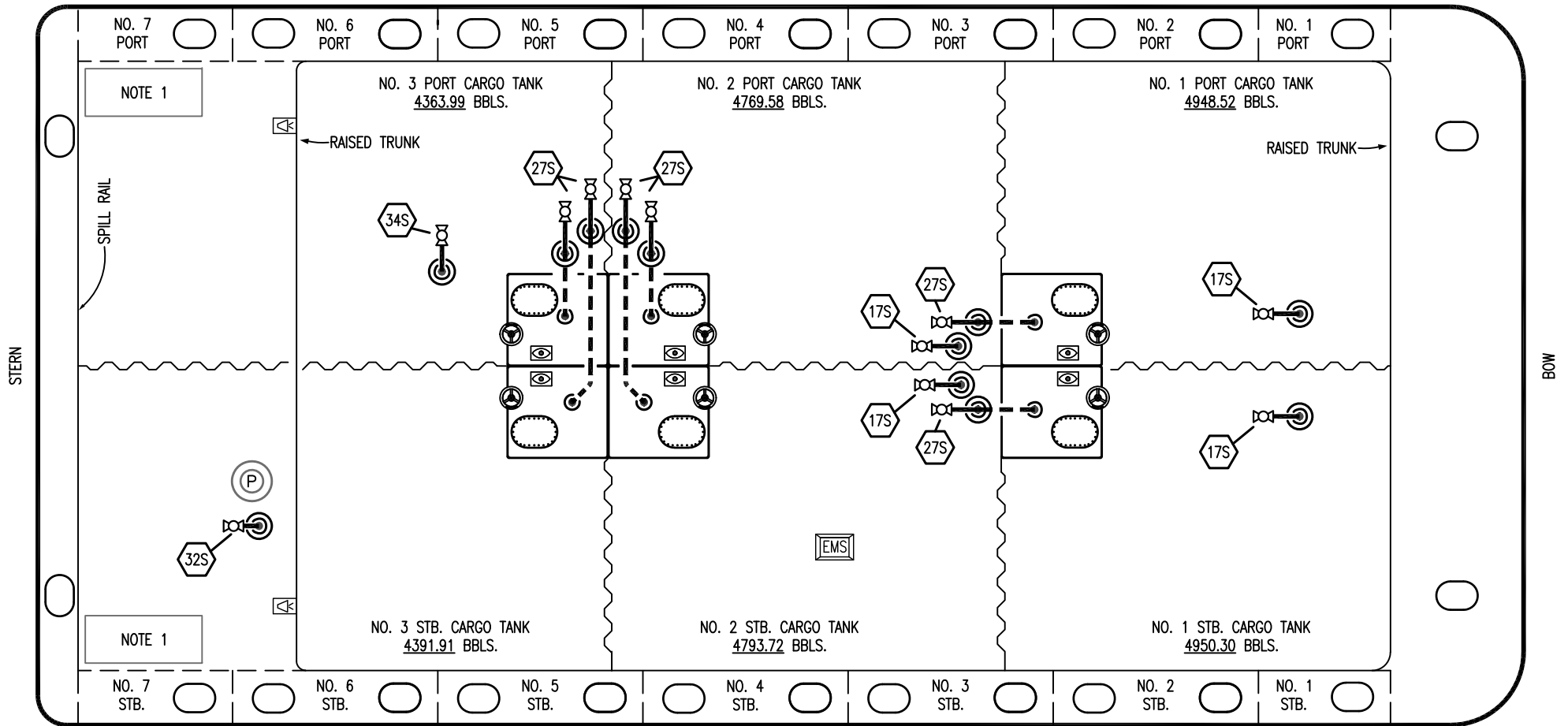
2	01/04/23	MRV	DDA	FIX	REVISED PER CLIENT COMMENTS
1	03/10/15	BB	DDA		REVISED PER CLIENT COMMENTS
0	06/18/14	DDA	DDA		ISSUED FOR APPROVAL
REV.	DATE	BY	CHK	APP	REVISION DESCRIPTION

KIRBY INLAND MARINE

VAPOR  
PIPING FLOW DIAGRAM

SCALE: NONE	KIRBY 29117	REV. 2
PAGE: 2 OF 3		

PORT



- | NO    | DESCRIPTION             |
|-------|-------------------------|
| 17S   | FORWARD TANK STRIPPING  |
| 18S   | TYP. STRIPPING DROP (⊙) |
| 27S   | SUMP SUCTION VALVE      |
| 32S   | PUMP WELL PRIMER VALVE  |
| 34S   | STRIPPING PIPELINE      |
| —     | ABOVE DECK PIPING       |
| - - - | BELOW DECK PIPING       |

NOTE 1: CONTAINMENT P/S

TRINITY

REV.	DATE	BY	CHK	APP	REVISION DESCRIPTION
1	01/04/23	MRV	DDA	FIX	REVISED PER CLIENT COMMENTS
0	06/18/14	DDA	DDA		ISSUED FOR APPROVAL

**KIRBY INLAND MARINE** 

**STRIPPING  
PIPING FLOW DIAGRAM**

SCALE: NONE  
PAGE: 3 OF 3

**KIRBY 29117**

REV. **1**