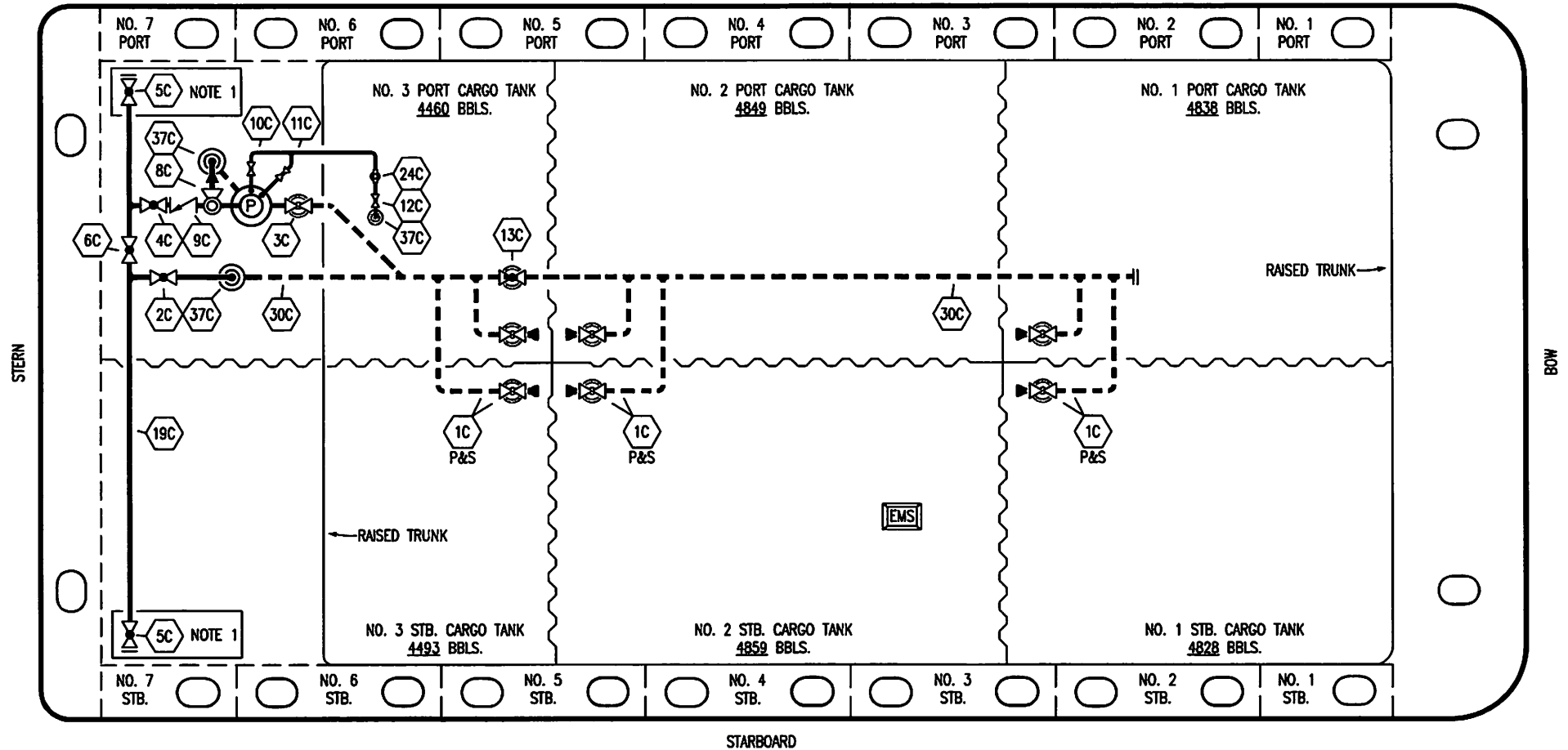


PORT



STERN

BOW

STARBOARD

- |     |                      |     |                                 |
|-----|----------------------|-----|---------------------------------|
| NO  | DESCRIPTION          | NO  | DESCRIPTION                     |
| 1C  | CARGO TANK VALVE     | 12C | BURP VALVE RETURN TO CARGO TANK |
| 2C  | LOAD VALVE           | 13C | CARGO PIPING BLOCK VALVE        |
| 3C  | MASTER SUCTION VALVE | 19C | CARGO HEADER                    |
| 4C  | DISCHARGE VALVE      | 24C | FLOW INDICATOR                  |
| 5C  | HEADER VALVE         | 30C | CARGO PIPELINE                  |
| 6C  | SALVAGE VALVE        | 37C | CARGO DROP                      |
| 8C  | RELIEF VALVE         | —   | — ABOVE DECK PIPING             |
| 9C  | CHECK VALVE          | --- | --- BELOW DECK PIPING           |
| 10C | BURP VALVE           |     |                                 |
| 11C | BLEED OFF VALVE      |     |                                 |

NOTE 1: CONTAINMENT P/S

TRINITY

REV.	DATE	BY	CHK	APP	REVISION DESCRIPTION
1	12/08/15	BB	DDA		REVISED PER CLIENT COMMENTS
0	06/18/14	DDA	DDA		ISSUED FOR APPROVAL

KIRBY INLAND MARINE 

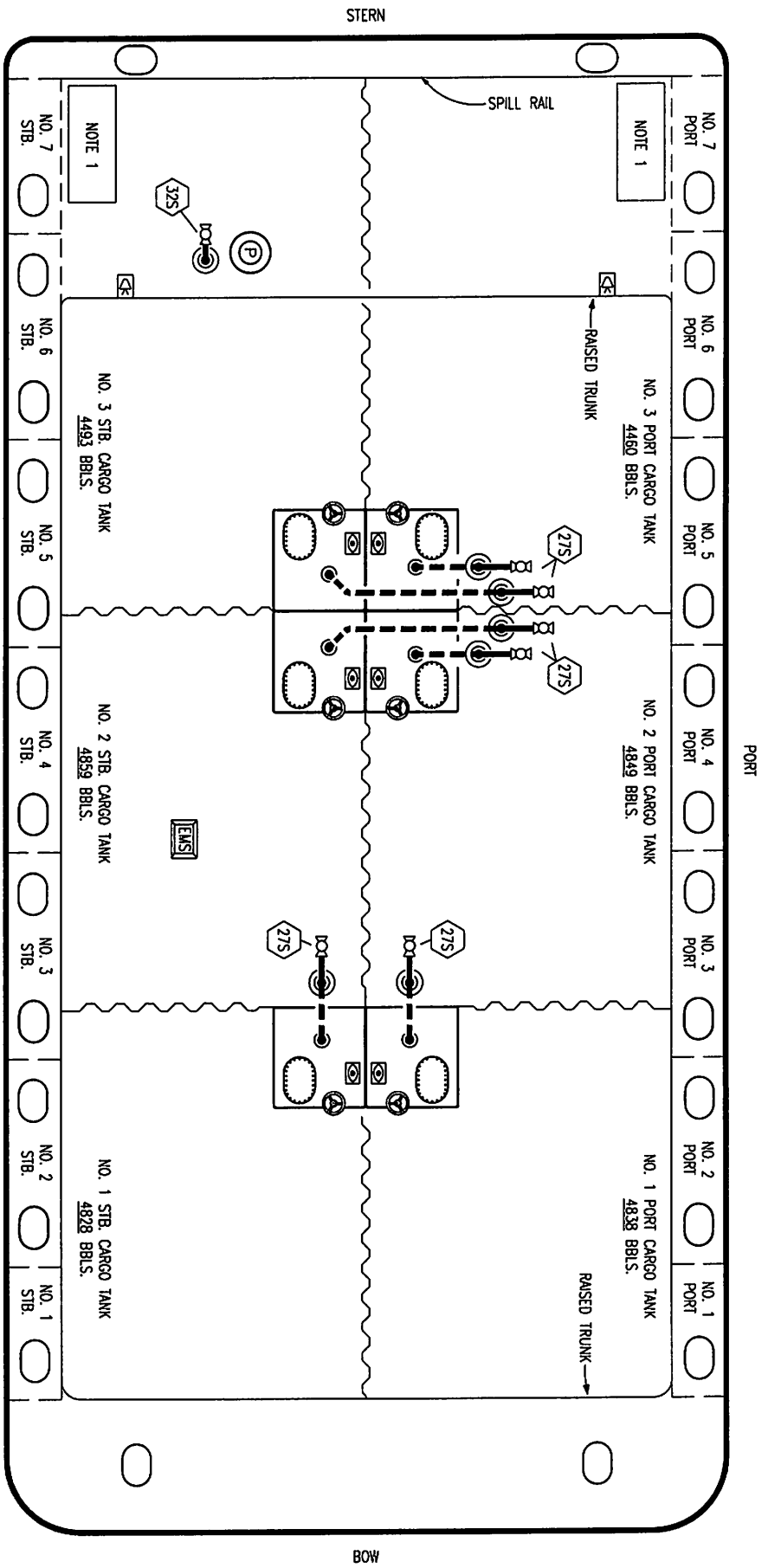
**CARGO  
PIPING FLOW DIAGRAM**

SCALE: NONE  
PAGE: 1 OF 3

**KIRBY 29116**

REV. **1**





- NO. 18S  
NO. 27S  
NO. 32S
- DESCRIPTION
- TYP. STRIPPING DROP
  - ⊙ SUMP SUCTION VALVE
  - ⊙ PUMP WELL PRIMER VALVE
  - ABOVE DECK PIPING
  - - - BELOW DECK PIPING

NOTE 1: CONTAINMENT P/S

REV.	DATE	BY	CHK	APP	REVISION DESCRIPTION
0	06/18/14	DDA	DDA		ISSUED FOR APPROVAL

**KIRBY INLAND MARINE**

**STRIPPING**

**PIPING FLOW DIAGRAM**

**KIRBY 29116**

SCALE: NONE  
PAGE: 3 OF 3  
REV: 0

TRINITY