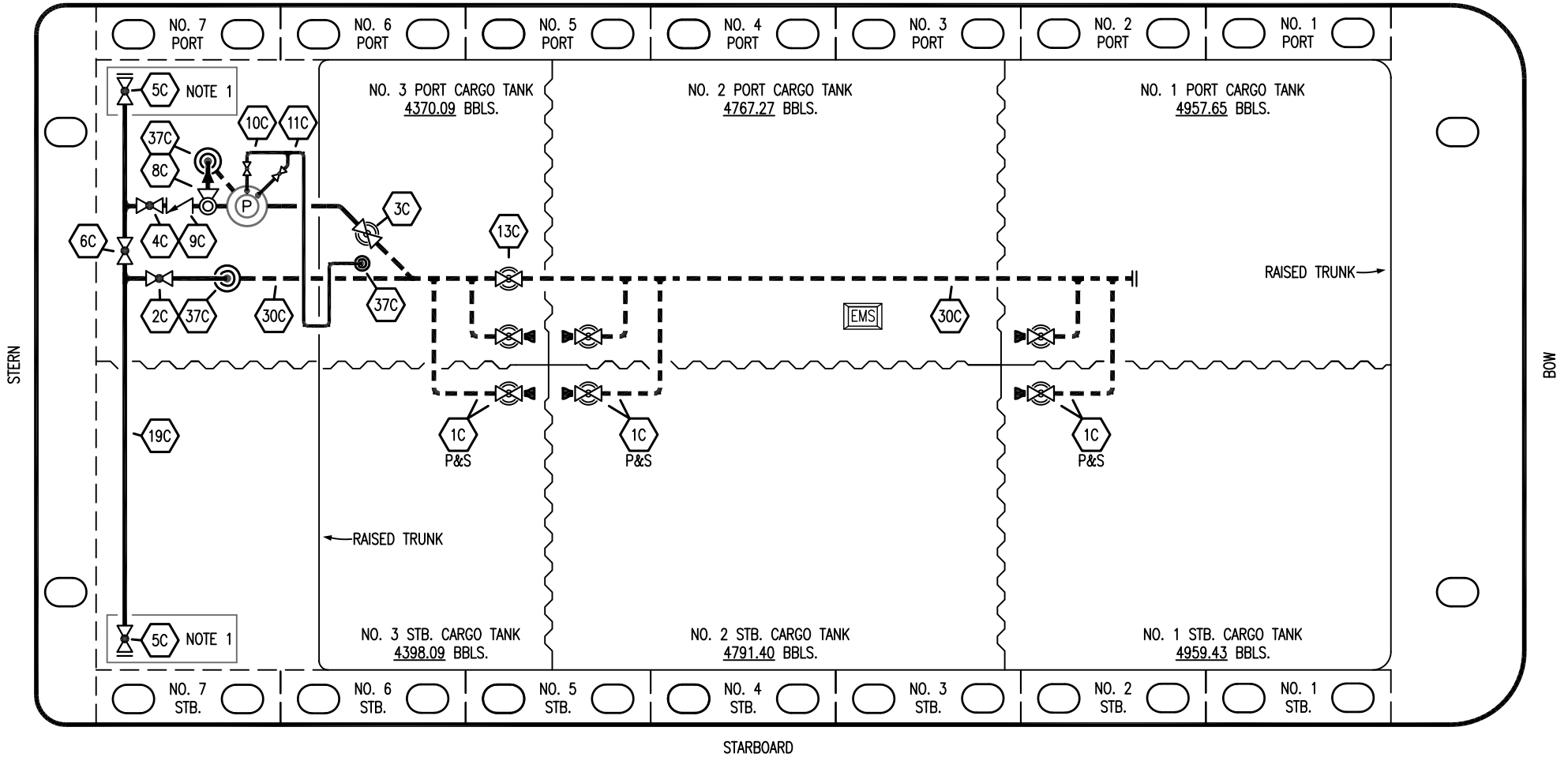


PORT



STERN

BOW

STARBOARD

- | | | | |
|-----|----------------------|-----|--------------------------|
| NO | DESCRIPTION | NO | DESCRIPTION |
| 1C | CARGO TANK VALVE | 13C | CARGO PIPING BLOCK VALVE |
| 2C | LOAD VALVE | 19C | CARGO HEADER |
| 3C | MASTER SUCTION VALVE | 30C | CARGO PIPELINE |
| 4C | DISCHARGE VALVE | 37C | CARGO DROP |
| 5C | HEADER VALVE | — | — |
| 6C | SALVAGE VALVE | — | — |
| 8C | RELIEF VALVE | — | — |
| 9C | CHECK VALVE | — | — |
| 10C | BURP VALVE | — | — |
| 11C | BLEED OFF VALVE | — | — |

NOTE 1: CONTAINMENT P/S

TRINITY

REV.	DATE	BY	CHK	APP	REVISION DESCRIPTION
3	03/07/23	MRV	DDA	LEP	REVISED PER CLIENT COMMENTS
2	12/07/15	BB	DDA		REVISED PER CLIENT COMMENTS
1	05/18/15	BB	BB		REVISED PER CLIENT COMMENTS
0	11/07/12	KS	DDA		ISSUED FOR APPROVAL

KIRBY INLAND MARINE

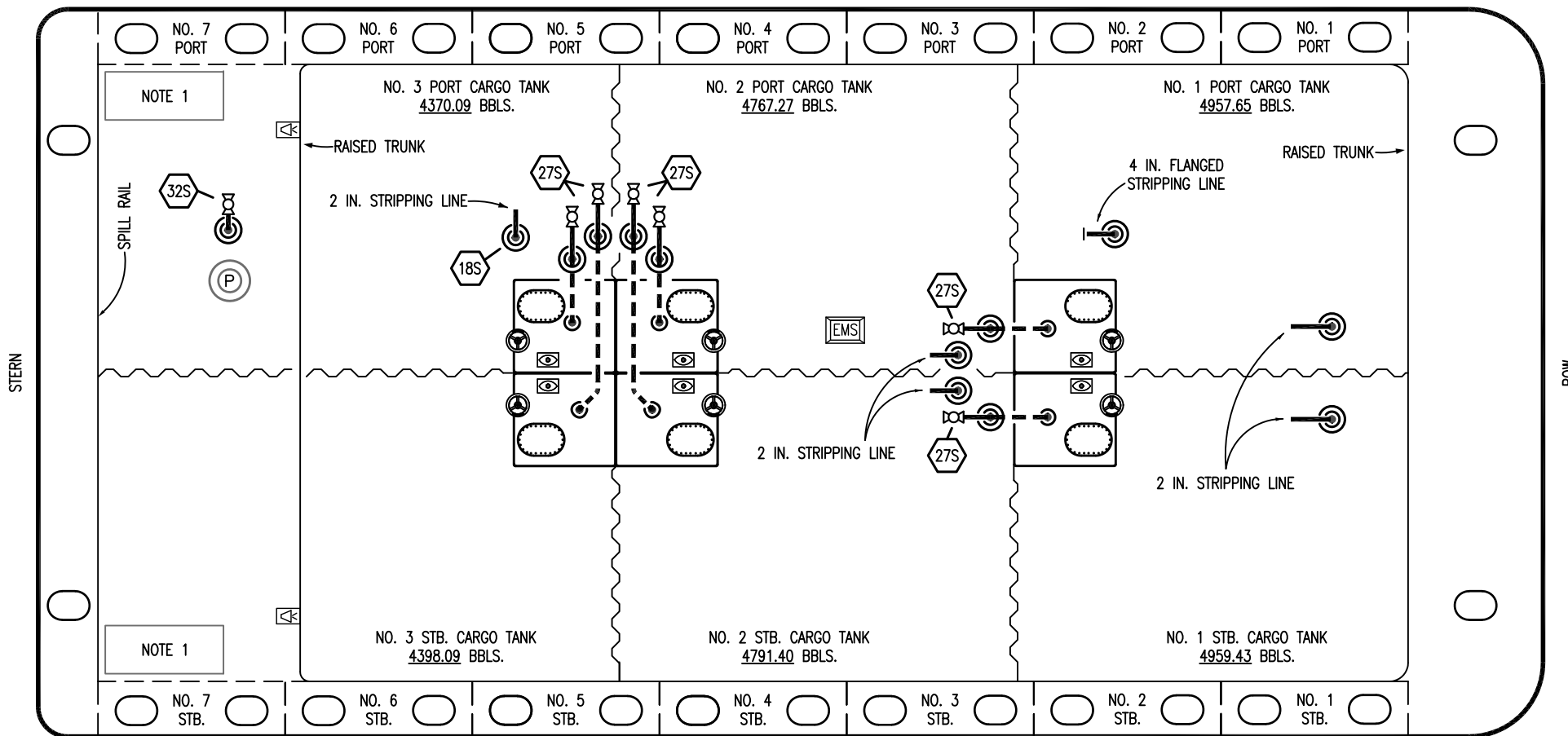
CARGO
PIPING FLOW DIAGRAM

KIRBY 29103

REV. 3

SCALE: NONE	
PAGE: 1 OF 3	

PORT



- | | |
|-------|-------------------------|
| NO | DESCRIPTION |
| 18S | TYP. STRIPPING DROP (P) |
| 27S | SUMP SUCTION VALVE |
| 32S | PUMP WELL PRIMER VALVE |
| — | ABOVE DECK PIPING |
| - - - | BELOW DECK PIPING |

NOTE 1: CONTAINMENT P/S

TRINITY

2	03/07/23	MRV	DDA	LEP	REVISED PER CLIENT COMMENTS	
1	05/18/15	BB	BB		REVISED PER CLIENT COMMENTS	
0	11/07/12	KS	DDA		ISSUED FOR APPROVAL	
REV.	DATE	BY	CHK	APP	REVISION DESCRIPTION	

KIRBY INLAND MARINE 

**STRIPPING
PIPING FLOW DIAGRAM**

SCALE: NONE
PAGE: 3 OF 3

KIRBY 29103

REV. **2**