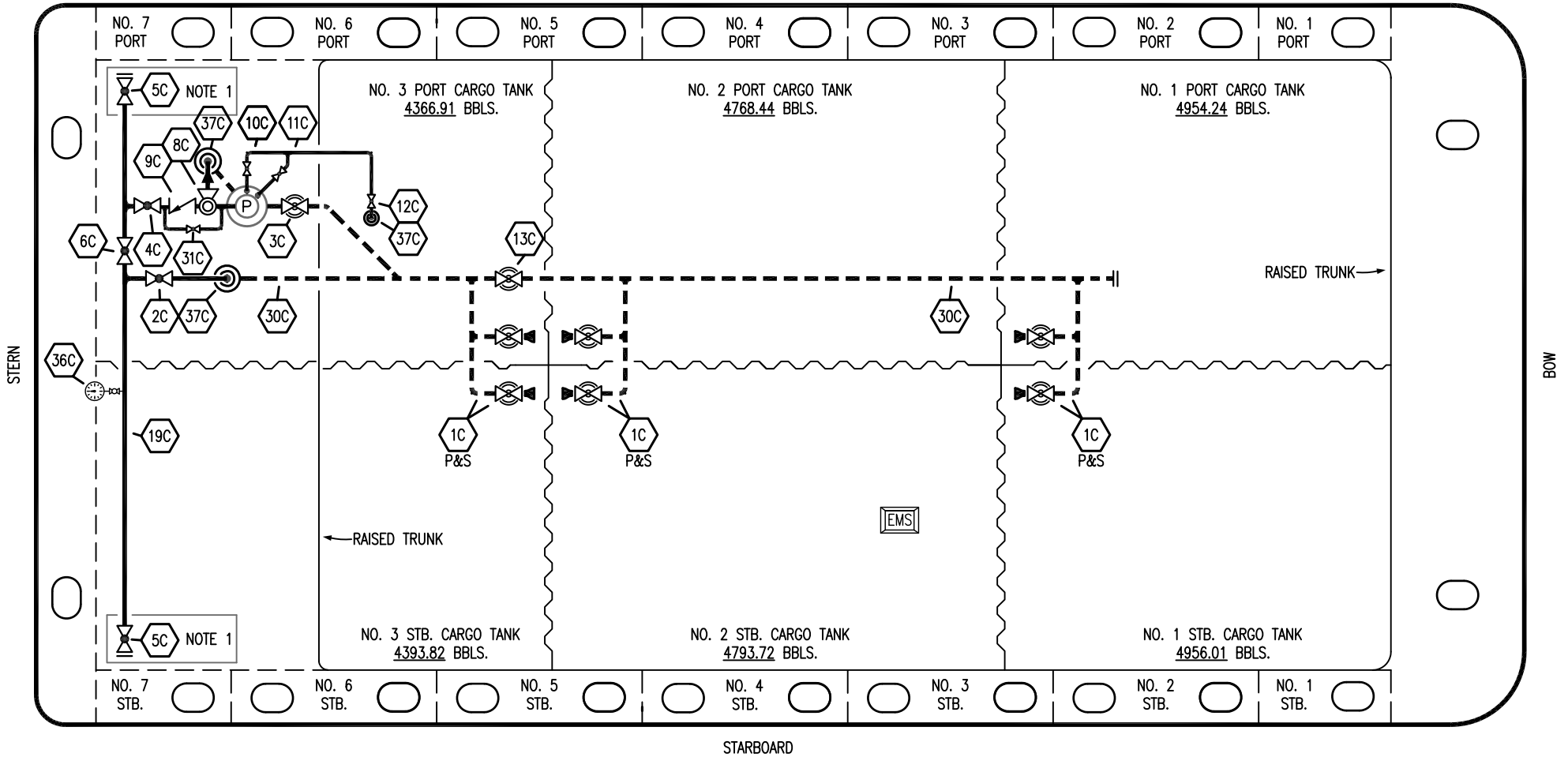


PORT



STARBOARD

- | | | | |
|-----------|----------------------|-----------|---------------------------------|
| NO | DESCRIPTION | NO | DESCRIPTION |
| 1C | CARGO TANK VALVE | 12C | BURP VALVE RETURN TO CARGO TANK |
| 2C | LOAD VALVE | 13C | CARGO PIPING BLOCK VALVE |
| 3C | MASTER SUCTION VALVE | 19C | CARGO HEADER |
| 4C | DISCHARGE VALVE | 30C | CARGO PIPELINE |
| 5C | HEADER VALVE | 31C | 2" BYPASS VALVE |
| 6C | SALVAGE VALVE | 36C | PRESSURE GAUGE |
| 8C | RELIEF VALVE | 37C | CARGO DROP |
| 9C | CHECK VALVE | — | — ABOVE DECK PIPING |
| 10C | BURP VALVE | --- | --- BELOW DECK PIPING |
| 11C | BLEED OFF VALVE | | |

NOTE 1: CONTAINMENT P/S

REV.	DATE	BY	CHK	APP	REVISION DESCRIPTION
3	05/30/23	MRV	DDA	FIX	REVISED PER CLIENT COMMENTS
2	04/04/18	WFB	DDA		ADDED CHECK VALVE BYPASS
1	12/07/15	BB	DDA		REVISED PER CLIENT COMMENTS
0	11/07/12	KS	DDA		ISSUED FOR APPROVAL

TRINITY

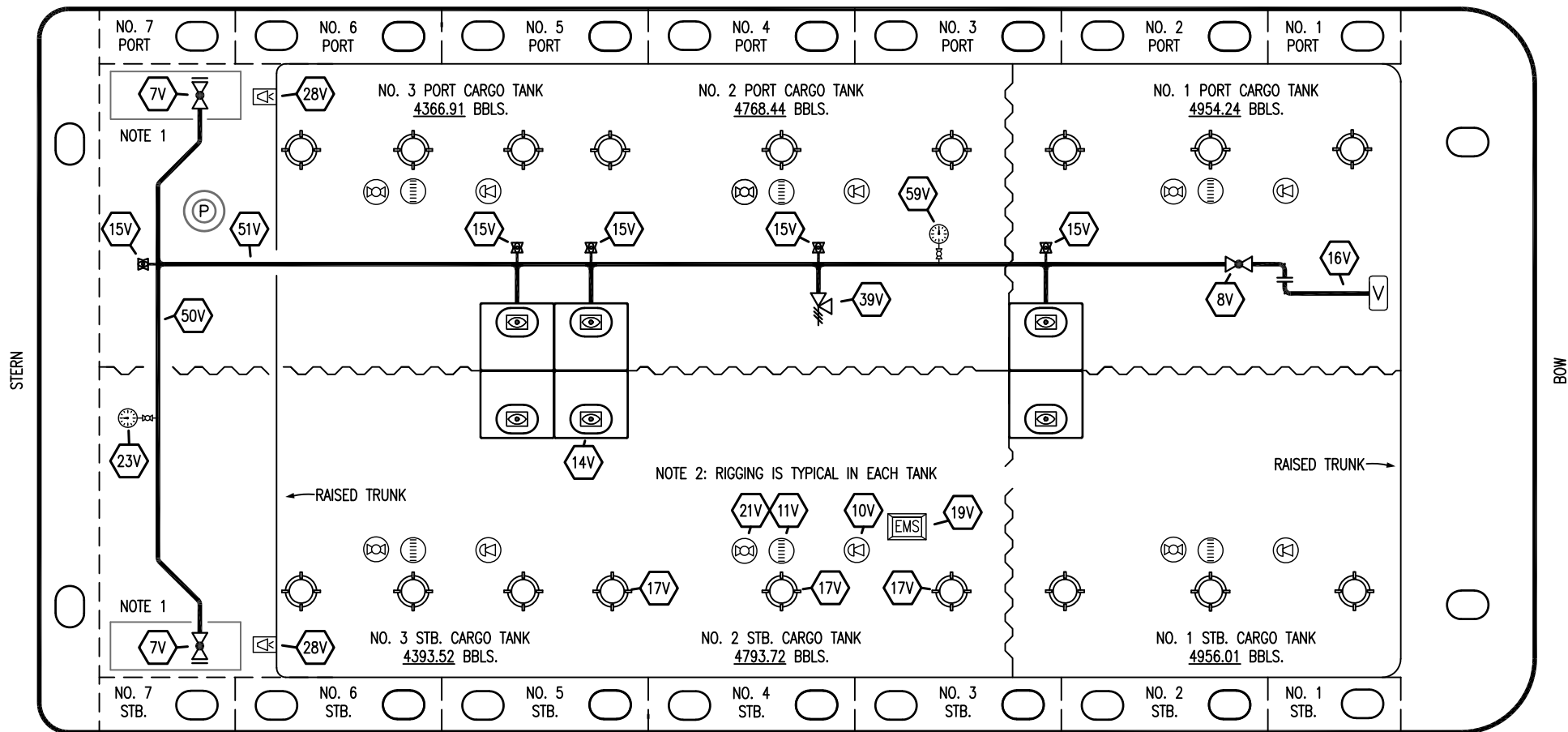
KIRBY INLAND MARINE

CARGO

PIPING FLOW DIAGRAM

SCALE: NONE	KIRBY 29102	REV. 3
PAGE: 1 OF 3		

PORT



STERN

BOW

STARBOARD

- | | | | |
|-----|------------------------------|-----|----------------------------|
| NO | DESCRIPTION | NO | DESCRIPTION |
| 7V | 8" HEADER VALVE | 21V | 2" HERMETIC GAUGE |
| 8V | 8" VENT STACK VALVE | 23V | PRESSURE GAUGE |
| 10V | 8" HIGH LEVEL/OVERFILL ALARM | 27V | 1/4" TEST CONNECTION VALVE |
| 11V | 8" 1-METER STICK GAUGE | 28V | DOCK CONNECTION ALARM |
| 14V | 6" SIGHT GLASS W/GAUGE TREE | 39V | PRESS/VAC RELIEF VALVE |
| 15V | 2" INSPECTION PORT | 50V | 8" VAPOR HEADER |
| 16V | 8" VAPOR VENT STACK | 51V | 8" VAPOR PIPELINE |
| 17V | 14" BUTTERWORTH | 59V | PRESS/VAC GAUGE |
| 18V | 2" RESTRICTIVE GAUGE TUBE | — | ABOVE DECK PIPING |
| 19V | EMERGENCY ENGINE SHUT DOWN | | |

NOTE 1: CONTAINMENT P/S

NOTE 2: RIGGING IS TYPICAL IN EACH TANK

TRINITY

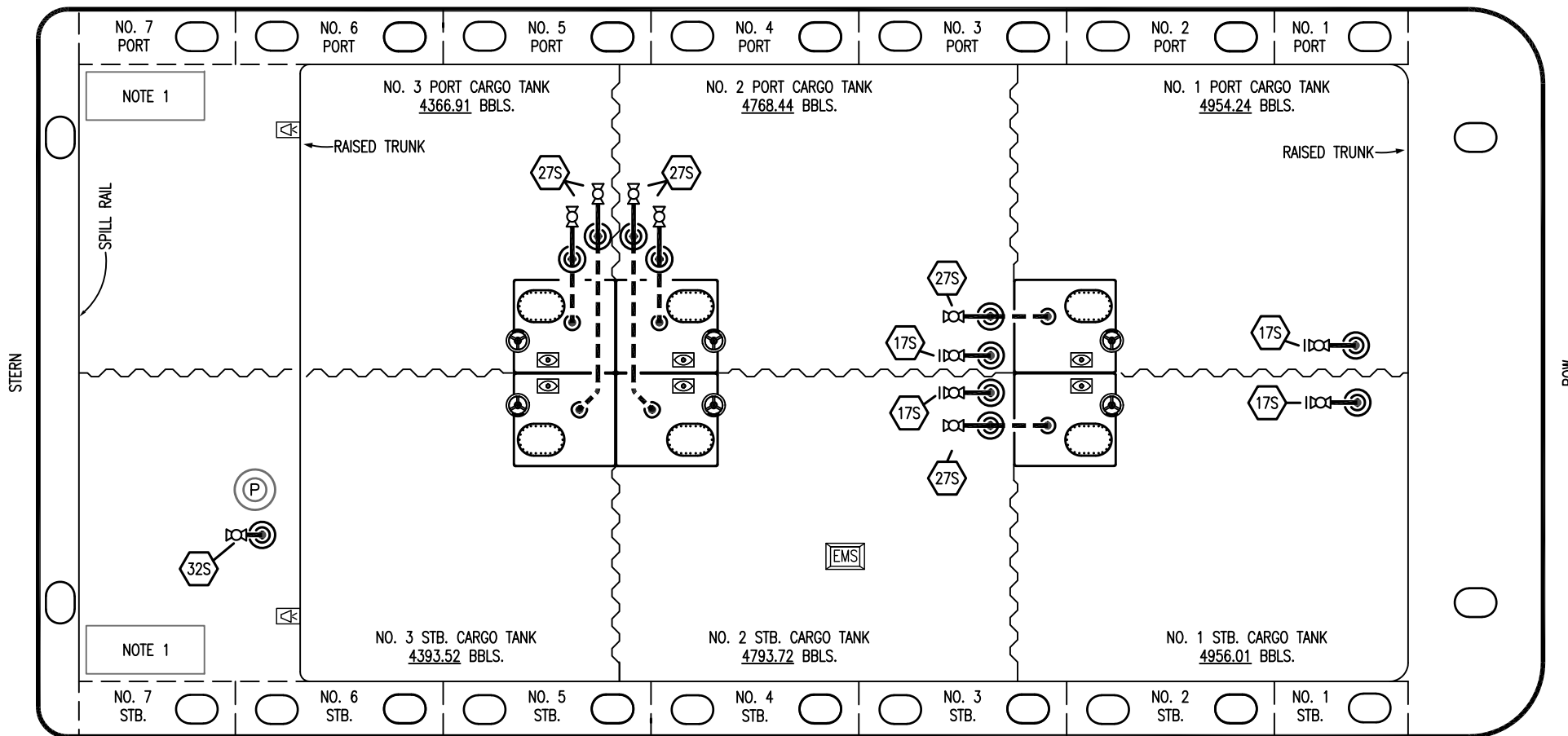
2	05/30/23	MRV	DDA	FIX	REVISED PER CLIENT COMMENTS
1	03/10/15	BB	DDA		REVISED PER CLIENT COMMENTS
0	11/07/12	KS	DDA		ISSUED FOR APPROVAL
REV.	DATE	BY	CHK	APP	REVISION DESCRIPTION

KIRBY INLAND MARINE

VAPOR
PIPING FLOW DIAGRAM

SCALE: NONE	KIRBY 29102	REV. 2
PAGE: 2 OF 3		

PORT



NOTE 1

NOTE 1

- NO DESCRIPTION
- 17S FORWARD TANK STRIPPING
- 18S TYP. STRIPPING DROP
- 27S SUMP SUCTION VALVE
- 32S PUMP WELL PRIMER VALVE

- ABOVE DECK PIPING
- - - BELOW DECK PIPING

NOTE 1: CONTAINMENT P/S

TRINITY

1	05/30/23	MRV	DDA	FIX	REVISED PER CLIENT COMMENTS
0	11/07/12	KS	DDA		ISSUED FOR APPROVAL
REV.	DATE	BY	CHK	APP	REVISION DESCRIPTION

KIRBY INLAND MARINE

**STRIPPING
PIPING FLOW DIAGRAM**

SCALE: NONE
PAGE: 3 OF 3

KIRBY 29102

REV. **1**