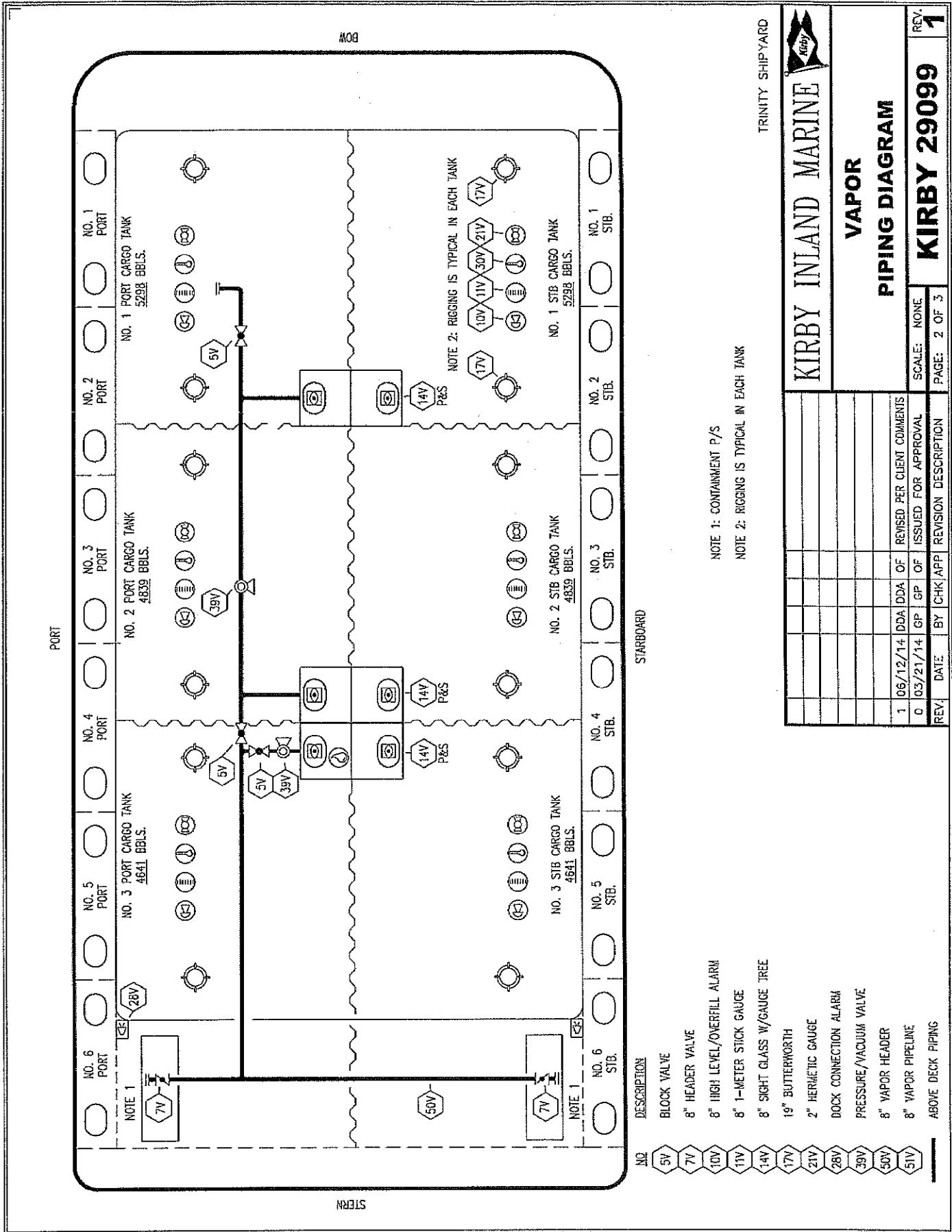


- NO DESCRIPTION
- 1C CARGO TANK VALVE
 - 2C LOAD VALVE
 - 3C MASTER SUCTION VALVE
 - 4C DISCHARGE VALVE
 - 5C HEADER VALVE
 - 13C CARGO PIPING BLOCK VALVE
 - 19C CARGO HEADER
 - 30C CARGO PIPELINE
 - 37C CARGO DROP
- ABOVE DECK PIPING
- BELOW DECK PIPING

NOTE 1: CONTAINMENT P/S



NOTE 1: CONTAINMENT P/S
 NOTE 2: RIGGING IS TYPICAL IN EACH TANK

TRINITY SHIPYARD

KIRBY INLAND MARINE

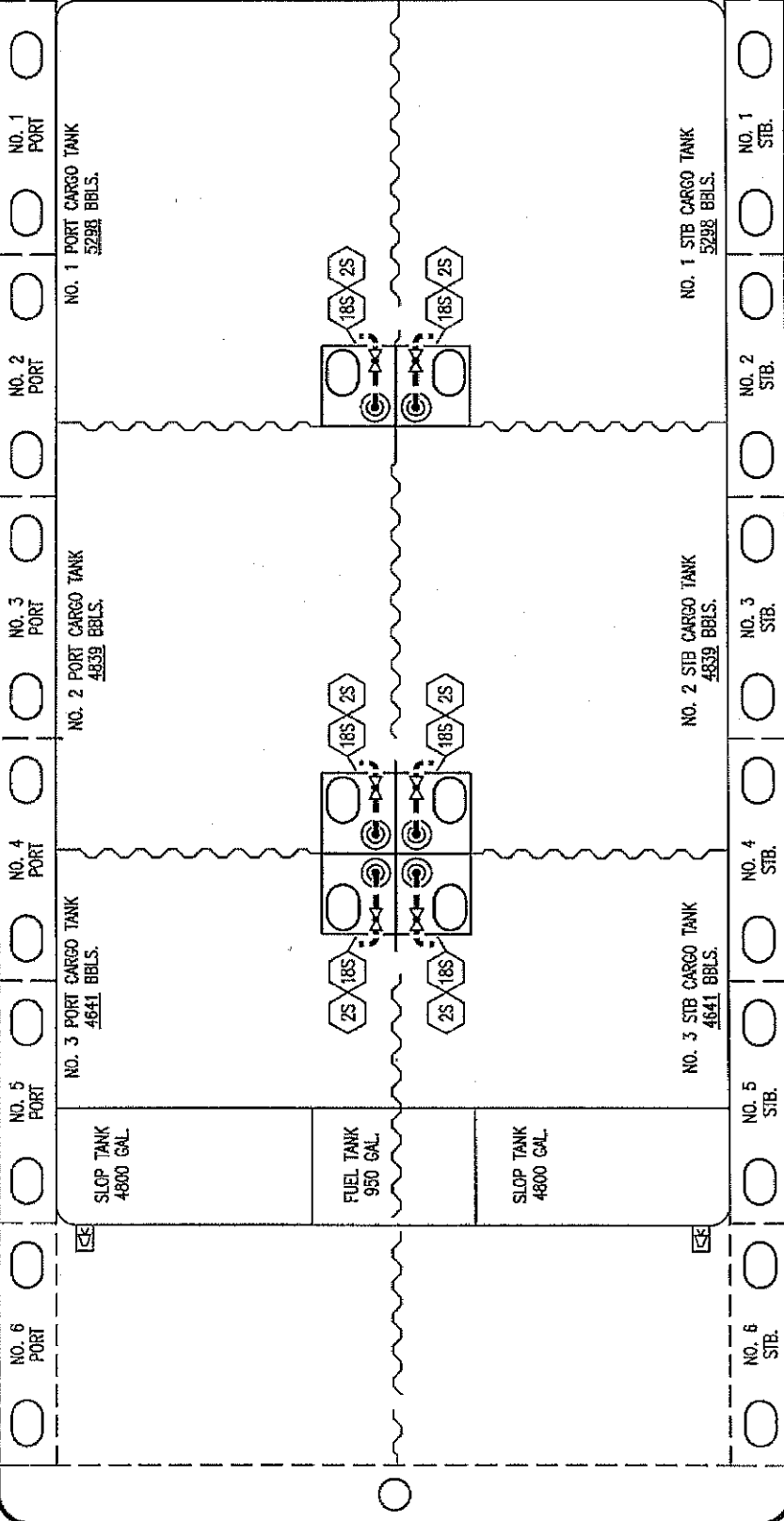
VAPOR PIPING DIAGRAM

REV.	DATE	BY	CHK/APP	REVISION DESCRIPTION
1	06/12/14	DDA	DDA	OF REVISED PER CLIENT COMMENTS
0	03/21/14	GP	GP	OF ISSUED FOR APPROVAL

SCALE: NONE
 PAGE: 2 OF 3
 REV. **1**

- NO. 1 PORT CARGO TANK 5298 BBLs.
 NO. 2 PORT CARGO TANK 4839 BBLs.
 NO. 3 PORT CARGO TANK 4839 BBLs.
 NO. 4 PORT CARGO TANK 4839 BBLs.
 NO. 5 PORT CARGO TANK 4839 BBLs.
 NO. 6 PORT CARGO TANK 4839 BBLs.
- NO. 1 STB CARGO TANK 5298 BBLs.
 NO. 2 STB CARGO TANK 4839 BBLs.
 NO. 3 STB CARGO TANK 4839 BBLs.
 NO. 4 STB CARGO TANK 4839 BBLs.
 NO. 5 STB CARGO TANK 4839 BBLs.
 NO. 6 STB CARGO TANK 4839 BBLs.
- NO. DESCRIPTION
 5V BLOCK VALVE
 7V HEADER VALVE
 10V 8" HIGH LEVEL/OVERFILL ALARM
 11V 8" 1-METER STICK GAUGE
 14V 8" SIGHT GLASS W/GAUGE TREE
 17V 19" BUTTERWORTH
 21V 2" HERMETIC GAUGE
 28V DOCK CONNECTION ALARM
 39V PRESSURE/VACUUM VALVE
 50V 8" VAPOR HEADER
 51V 8" VAPOR PIPELINE
 ABOVE DECK PIPING

PORT



BOW

STERN

STARBOARD

- NO. DESCRIPTION
- 2S CARGO SUMP SUCTION VALVE
- 18S STRIPPING DROP

TRINITY MARINE



KIRBY INLAND MARINE

STRIPPING PIPING DIAGRAM

REV.	DATE	BY	CHK APP	REVISION DESCRIPTION
1	05/12/14	DDA	OF	REVISED PER CLIENT COMMENTS
0	03/21/14	GP	OF	ISSUED FOR APPROVAL

SCALE: NONE
 PAGE: 3 OF 3
KIRBY 29099

REV. 1