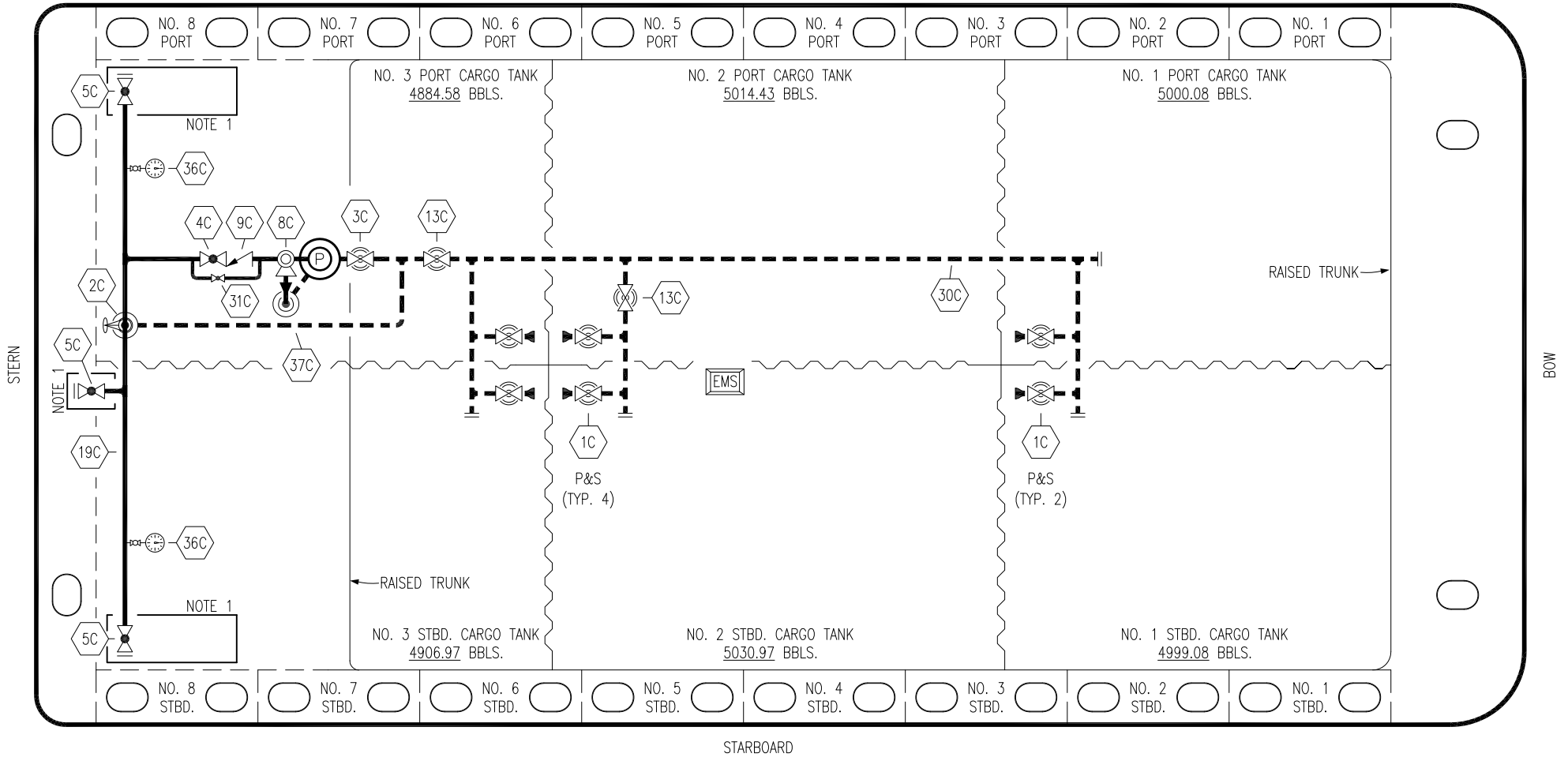


PORT



STARBOARD

- |     |                          |     |                   |
|-----|--------------------------|-----|-------------------|
| NO  | DESCRIPTION              | NO  | DESCRIPTION       |
| 1C  | CARGO TANK VALVE         | 30C | CARGO PIPELINE    |
| 2C  | LOAD VALVE               | 31C | BYPASS VALVE      |
| 3C  | MASTER SUCTION VALVE     | 36C | PRESSURE GAUGE    |
| 4C  | DISCHARGE VALVE          | 37C | CARGO DROP        |
| 5C  | HEADER VALVE             |     | ABOVE DECK PIPING |
| 8C  | RELIEF VALVE             |     | BELOW DECK PIPING |
| 9C  | CHECK VALVE              |     |                   |
| 13C | CARGO PIPING BLOCK VALVE |     |                   |
| 19C | CARGO HEADER             |     |                   |

NOTE 1: CONTAINMENT P/S

STERLING EX: CTCO 322

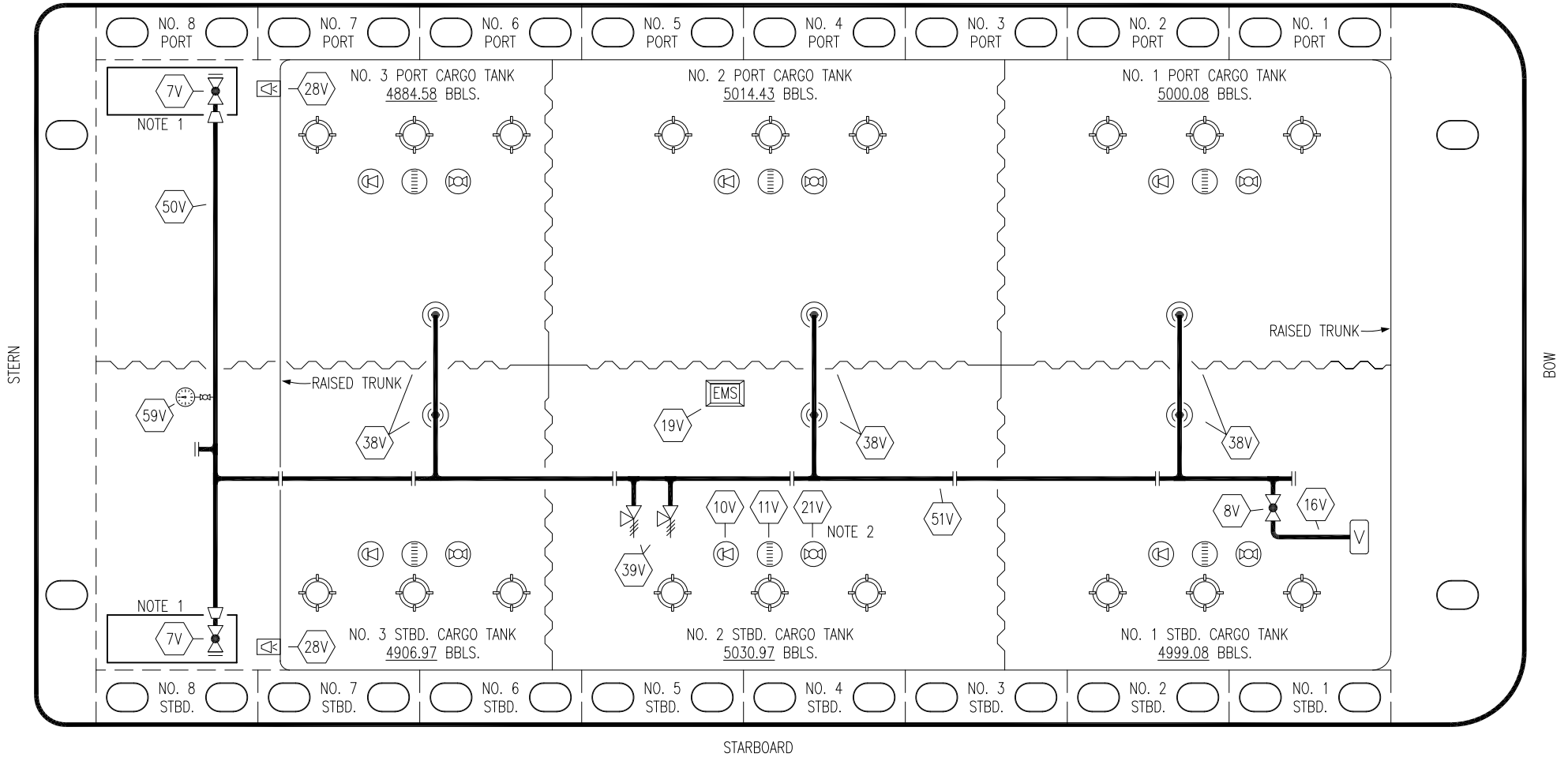
REV.	DATE	BY	CHK	APP	REVISION DESCRIPTION
1	09/29/20	MRV	DDA	TL	REVISED BARGE NAME
0	02/15/19	MRV	DDA		ISSUED FOR APPROVAL

KIRBY INLAND MARINE

CARGO  
PIPING FLOW DIAGRAM

SCALE: NONE	KIRBY 29094
PAGE: 1 OF 3	REV. 1

PORT



STARBOARD

- |     |                            |     |                       |
|-----|----------------------------|-----|-----------------------|
| NO  | DESCRIPTION                | NO  | DESCRIPTION           |
| 7V  | HEADER VALVE               | 28V | DOCK CONNECTION ALARM |
| 8V  | VENT STACK VALVE           | 38V | VAPOR PENETRATION     |
| 10V | HIGH LEVEL/OVERFILL ALARM  | 39V | PRESSURE/VACUUM VALVE |
| 11V | 1-METER GAUGE STICK        | 50V | VAPOR HEADER          |
| 16V | VAPOR VENT STACK           | 51V | VAPOR PIPELINE        |
| 19V | EMERGENCY ENGINE SHUT DOWN | 59V | PRESS/VAC GAUGE       |
| 21V | HERMETIC GAUGE             | —   | ABOVE DECK PIPING     |

NOTE 2: TYPICAL RIGGING IN EACH TANK

NOTE 1: CONTAINMENT P/S

STERLING EX: CTCO 322

1	09/29/20	MRV	DDA	TL	REVISED BARGE NAME	
0	02/15/19	MRV	DDA		ISSUED FOR APPROVAL	
REV.	DATE	BY	CHK	APP	REVISION DESCRIPTION	

KIRBY INLAND MARINE 

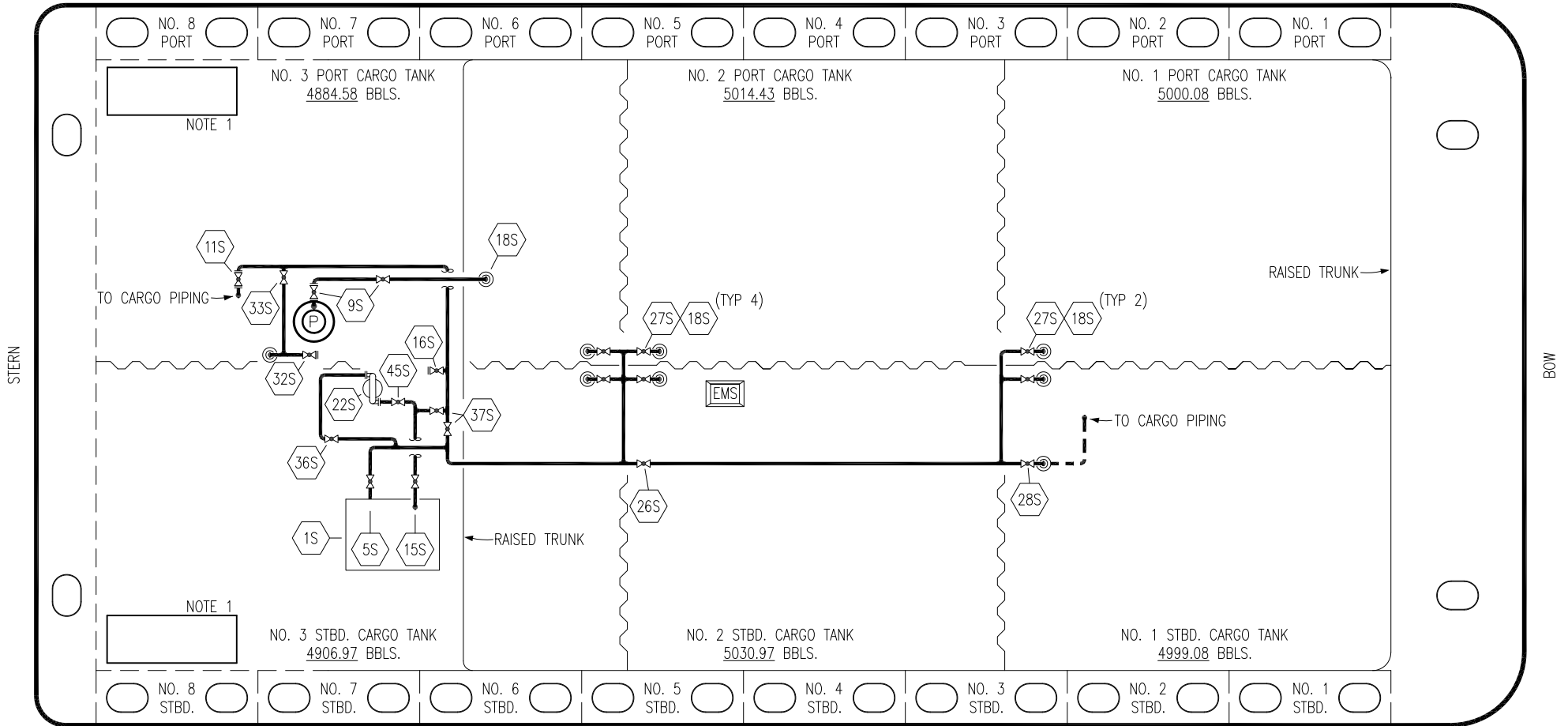
**VAPOR  
PIPING FLOW DIAGRAM**

**KIRBY 29094**

SCALE: NONE  
PAGE: 2 OF 3

REV. **1**

PORT



NO	DESCRIPTION	NO	DESCRIPTION
1S	SLOP TANK	27S	SUMP SUCTION VALVE
5S	SLOP TANK SUCTION VALVE	28S	CARGO PIPING SUCTION
9S	BURP VALVE	32S	PUMP WELL PRIMER VALVE
10S	STRIPPING PUMP CHECK VALVE	33S	PUMP WELL SUCTION
11S	LOWER CARGO PIPELINE SUCTION VALVE	36S	STRIPPING PUMP DISCHARGE
15S	DISCHARGE VALVE	37S	BLOCK VALVE
16S	REMOTE SUCTION CONNECTION	45S	STRIPPING PUMP SUCTION VALVE
18S	TYP. STRIPPING PENETRATION	—	ABOVE DECK PIPING
22S	STRIPPING PUMP	- - -	BELOW DECK PIPING
26S	STRIPPING HEADER BLOCK VALVE		

NOTE 1: CONTAINMENT P/S

STERLING EX: CTCO 322

REV.	DATE	BY	CHK	APP	REVISION DESCRIPTION
0	09/29/20	MRV	DDA	TL	ISSUED FOR APPROVAL

**KIRBY INLAND MARINE**

**STRIPPING  
PIPING FLOW DIAGRAM**

**KIRBY 29094**

SCALE: NONE	REV. 0
PAGE: 3 OF 3	

STARBOARD