

- |    |                      |     |                          |
|----|----------------------|-----|--------------------------|
| NO | DESCRIPTION          | NO  | DESCRIPTION              |
| 1C | CARGO TANK VALVE     | 9C  | CHECK VALVE              |
| 2C | LOAD VALVE           | 13C | CARGO PIPING BLOCK VALVE |
| 3C | MASTER SUCTION VALVE | 19C | CARGO HEADER             |
| 4C | DISCHARGE VALVE      | 30C | CARGO PIPELINE           |
| 5C | HEADER VALVE         | 36C | PRESSURE GAUGE           |
| 6C | SALVAGE VALVE        | 37C | CARGO DROP               |
| 8C | RELIEF VALVE         |     | ABOVE DECK PIPING        |
|    |                      |     | BELOW DECK PIPING        |

NOTE 1: CONTAINMENT P/S

STERLING EX: CTCO 321

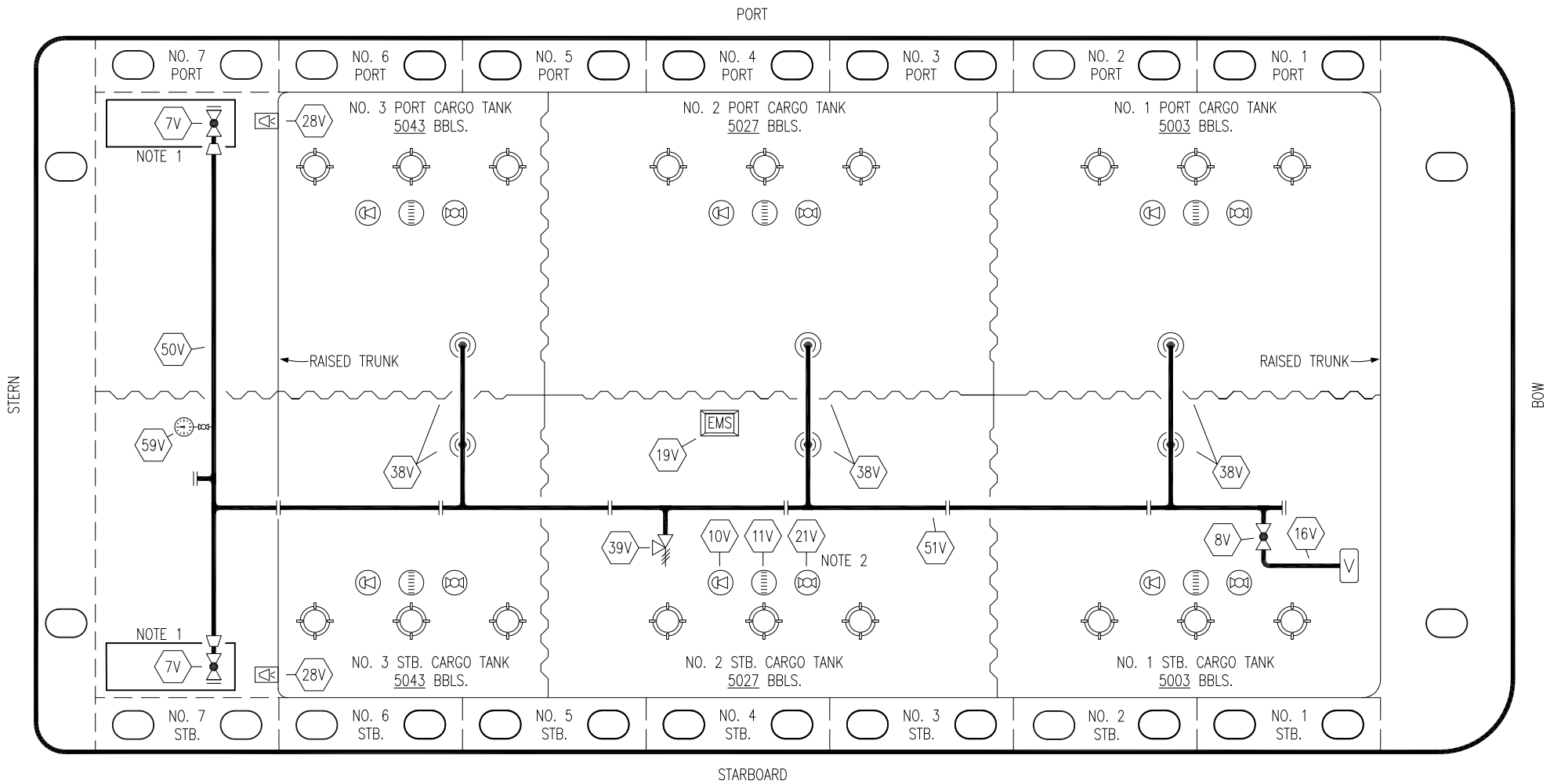
REV.	DATE	BY	CHK	APP	REVISION DESCRIPTION
1	03/30/22	MRV	DDA	TL	REVISED PER CLIENT COMMENTS
0	02/15/19	MRV	DDA		ISSUED FOR APPROVAL

**KIRBY INLAND MARINE**

**CARGO**

**PIPING FLOW DIAGRAM**

SCALE: NONE	<b>KIRBY 29093</b>
PAGE: 1 OF 3	<b>REV. 1</b>




NO	DESCRIPTION	NO	DESCRIPTION
7V	HEADER VALVE	28V	DOCK CONNECTION ALARM
8V	VENT STACK VALVE	38V	VAPOR PENETRATION
10V	HIGH LEVEL/OVERFILL ALARM	39V	PRESSURE/VACUUM VALVE
11V	1-METER GAUGE STICK	50V	VAPOR HEADER
16V	VAPOR VENT STACK	51V	VAPOR PIPELINE
19V	EMERGENCY ENGINE SHUT DOWN	59V	PRESS/VAC GAUGE
21V	HERMETIC GAUGE		ABOVE DECK PIPING

NOTE 2: TYPICAL RIGGING IN EACH TANK  
 NOTE 1: CONTAINMENT P/S

STERLING EX: CTCO 321

REV.	DATE	BY	CHK	APP	REVISION DESCRIPTION
1	03/30/22	MRV	DDA	TL	REVISED PER CLIENT COMMENTS
0	02/15/19	MRV	DDA		ISSUED FOR APPROVAL

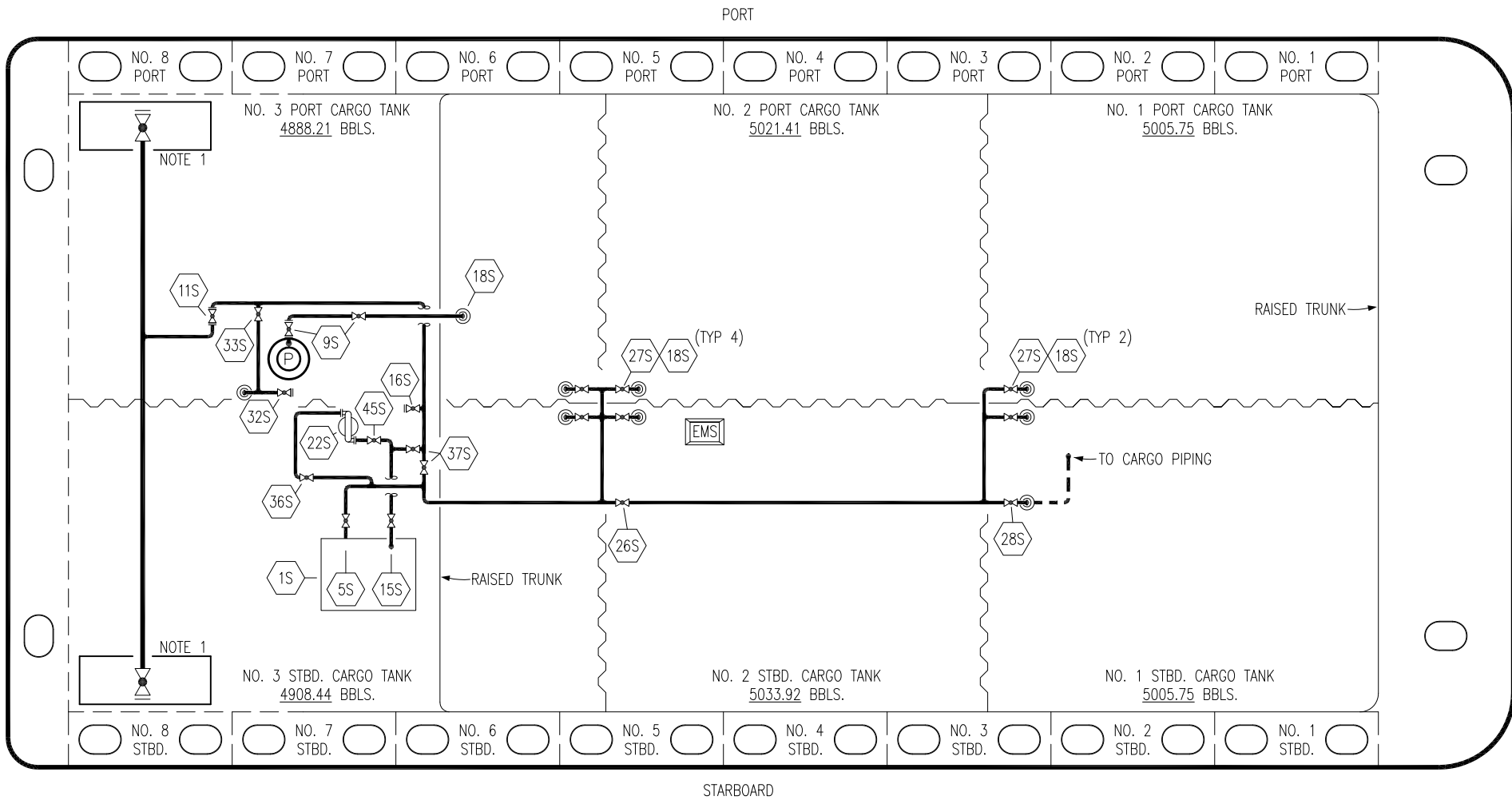


**KIRBY INLAND MARINE**

**VAPOR PIPING FLOW DIAGRAM**

**KIRBY 29093**

SCALE: NONE	REV. 1
PAGE: 2 OF 3	



NO	DESCRIPTION	NO	DESCRIPTION
1S	SLOP TANK	27S	SUMP SUCTION VALVE
5S	SLOP TANK SUCTION VALVE	28S	CARGO PIPING SUCTION
9S	BURP VALVE	32S	PUMP WELL PRIMER VALVE
10S	STRIPPING PUMP CHECK VALVE	33S	PUMP WELL SUCTION
11S	LOWER CARGO PIPELINE SUCTION VALVE	36S	STRIPPING PUMP DISCHARGE
15S	DISCHARGE VALVE	37S	BLOCK VALVE
16S	REMOTE SUCTION CONNECTION	45S	STRIPPING PUMP SUCTION VALVE
18S	TYP. STRIPPING PENETRATION (⊙)	—	— ABOVE DECK PIPING
22S	STRIPPING PUMP	- - -	BELOW DECK PIPING
26S	STRIPPING HEADER BLOCK VALVE		

NOTE 1: CONTAINMENT P/S

REV.	DATE	BY	CHK	APP	REVISION DESCRIPTION
1	03/30/22	MRV	DDA	TL	REVISED PER CLIENT COMMENTS
0	06/24/20	MRV	DDA	DR	ISSUED FOR APPROVAL

STERLING EX: CTCO 321

**KIRBY INLAND MARINE**

**STRIPPING  
PIPING FLOW DIAGRAM**

<b>KIRBY 29093</b>	REV. <b>1</b>
SCALE: NONE	PAGE: 3 OF 3