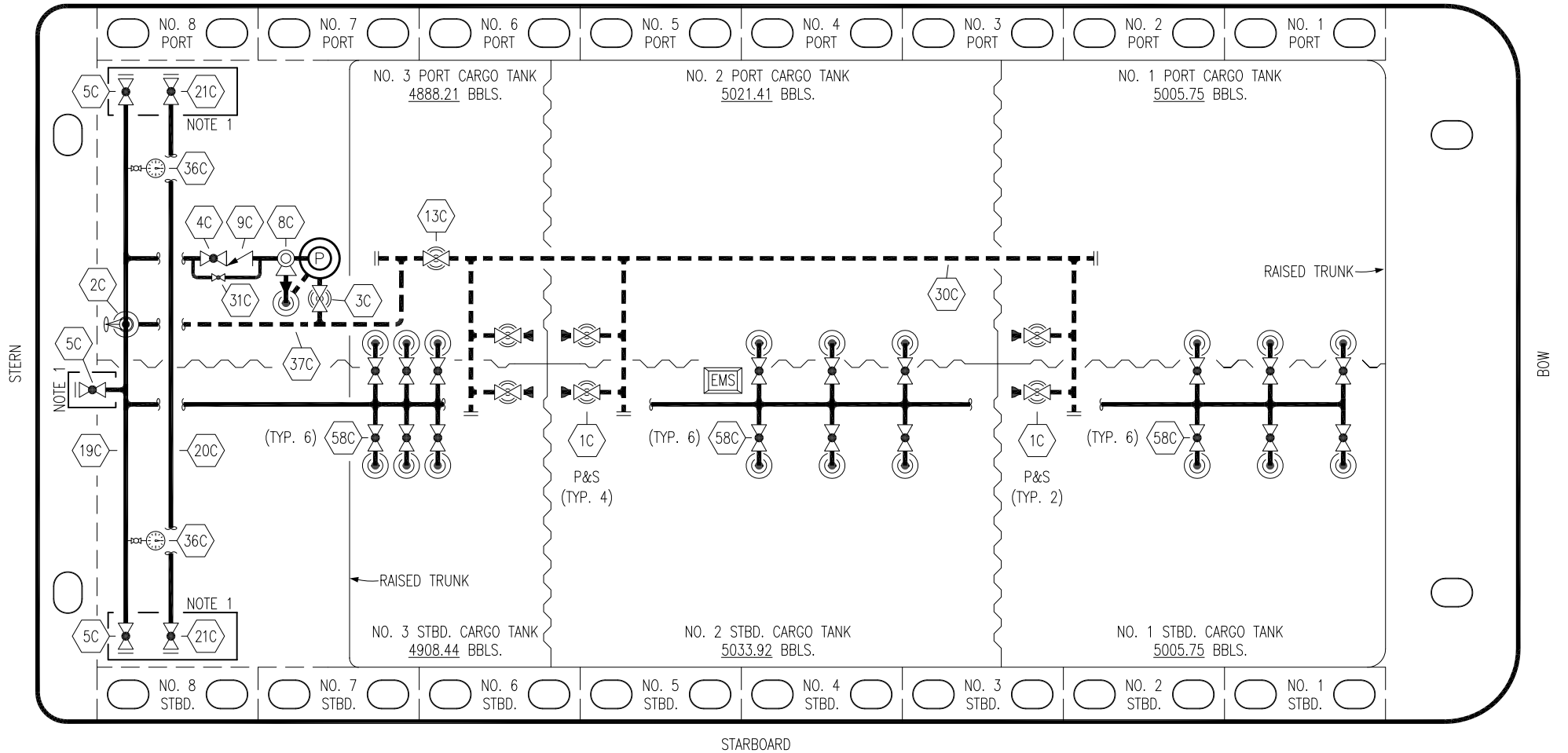



PORT



STARBOARD


NO	DESCRIPTION	NO	DESCRIPTION
1C	CARGO TANK VALVE	21C	DUMMY HEADER VALVE
2C	LOAD VALVE	30C	CARGO PIPELINE
3C	MASTER SUCTION VALVE	31C	BYPASS VALVE
4C	DISCHARGE VALVE	36C	PRESSURE GAUGE
5C	HEADER VALVE	37C	CARGO DROP 
8C	RELIEF VALVE	58C	CARGO SUPPLY VALVE
9C	CHECK VALVE	—	— ABOVE DECK PIPING
13C	CARGO PIPING BLOCK VALVE	---	--- BELOW DECK PIPING
19C	CARGO HEADER		
20C	DUMMY HEADER PIPING		

NOTE 1: CONTAINMENT P/S

STERLING EX: CTCO 320

1	06/24/20	MRV	DDA	DR	REVISED BARGE NAME
0	02/15/19	MRV	DDA		ISSUED FOR APPROVAL
REV.	DATE	BY	CHK	APP	REVISION DESCRIPTION

STERLING EX: CTCO 320

KIRBY INLAND MARINE 

CARGO

PIPING FLOW DIAGRAM

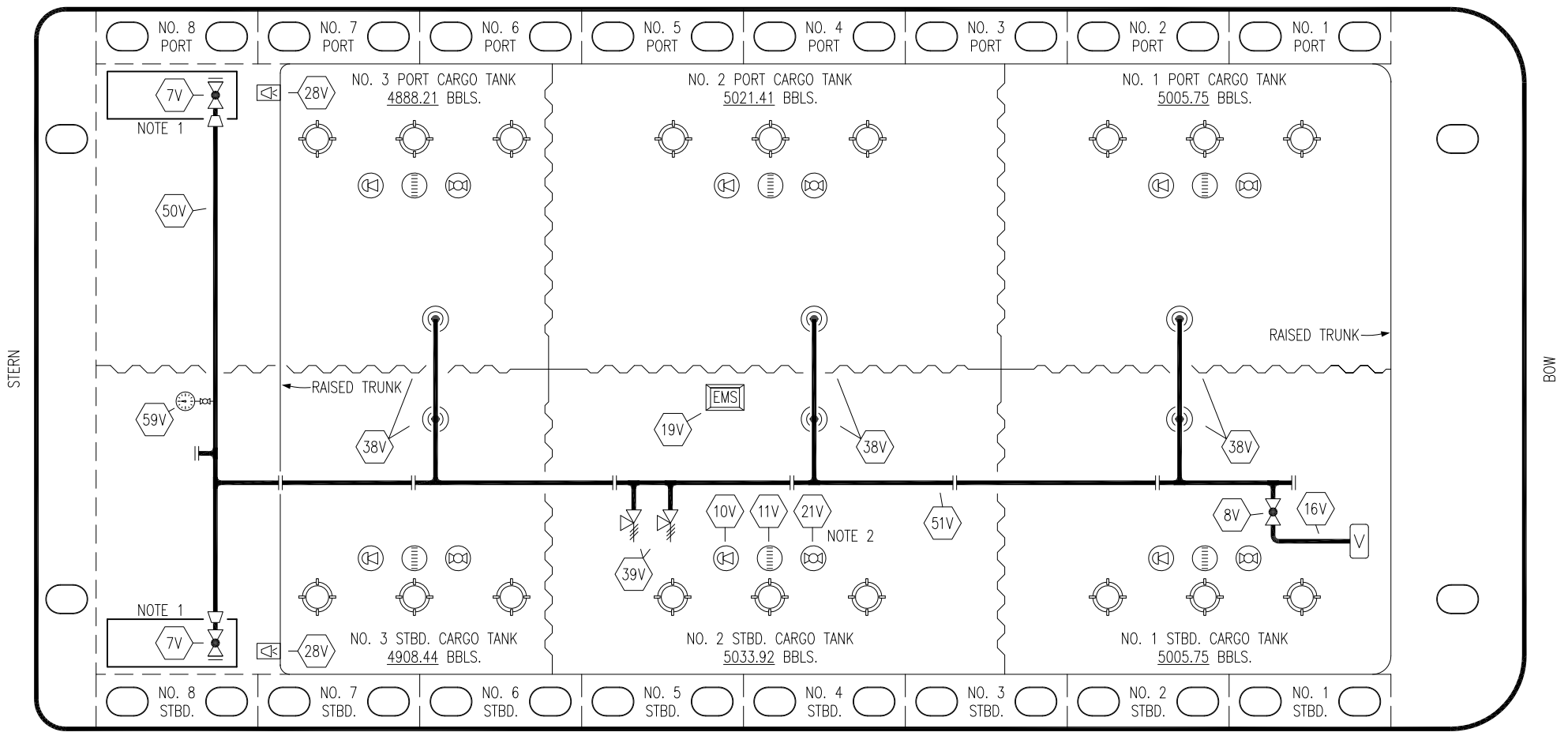
KIRBY 29092

SCALE: NONE

PAGE: 1 OF 3

REV. **1**

PORT



STARBOARD

- | | | | |
|-----|----------------------------|-----|-----------------------|
| NO | DESCRIPTION | NO | DESCRIPTION |
| 7V | HEADER VALVE | 28V | DOCK CONNECTION ALARM |
| 8V | VENT STACK VALVE | 38V | VAPOR PENETRATION (⊙) |
| 10V | HIGH LEVEL/OVERFILL ALARM | 39V | PRESSURE/VACUUM VALVE |
| 11V | 1-METER GAUGE STICK | 50V | VAPOR HEADER |
| 16V | VAPOR VENT STACK | 51V | VAPOR PIPELINE |
| 19V | EMERGENCY ENGINE SHUT DOWN | 59V | PRESS/VAC GAUGE |
| 21V | HERMETIC GAUGE | — | ABOVE DECK PIPING |

NOTE 2: TYPICAL RIGGING IN EACH TANK
 NOTE 1: CONTAINMENT P/S

STERLING EX: CTCO 320

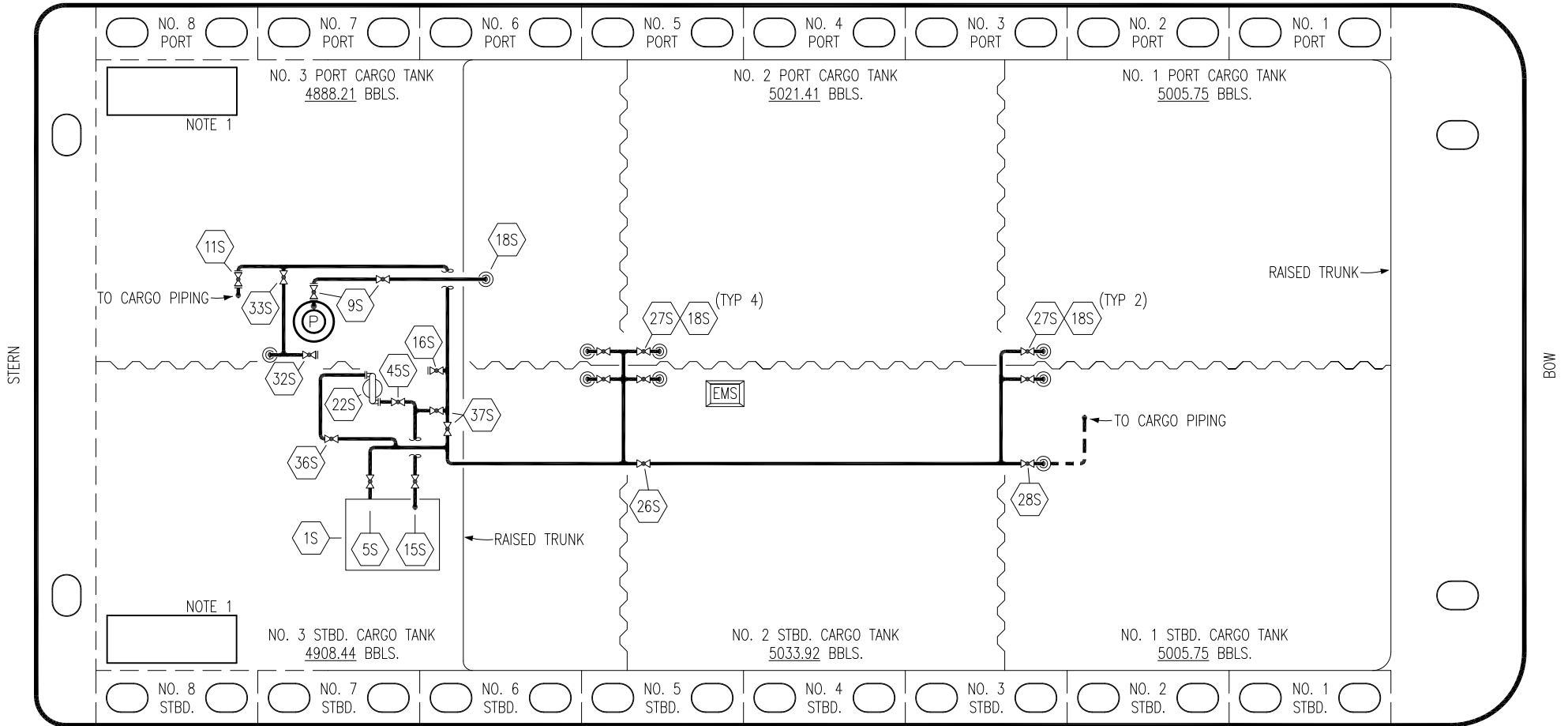
1	06/24/20	MRV	DDA	DR	REVISED BARGE NAME
0	02/15/19	MRV	DDA		ISSUED FOR APPROVAL
REV.	DATE	BY	CHK	APP	REVISION DESCRIPTION

KIRBY INLAND MARINE

VAPOR
PIPING FLOW DIAGRAM

SCALE: NONE	KIRBY 29092	REV. 1
PAGE: 2 OF 3		

PORT



NOTE 1

NOTE 1

NO	DESCRIPTION	NO	DESCRIPTION
1S	SLOP TANK	27S	SUMP SUCTION VALVE
5S	SLOP TANK SUCTION VALVE	28S	CARGO PIPING SUCTION
9S	BURP VALVE	32S	PUMP WELL PRIMER VALVE
10S	STRIPPING PUMP CHECK VALVE	33S	PUMP WELL SUCTION
11S	LOWER CARGO PIPELINE SUCTION VALVE	36S	STRIPPING PUMP DISCHARGE
15S	DISCHARGE VALVE	37S	BLOCK VALVE
16S	REMOTE SUCTION CONNECTION	45S	STRIPPING PUMP SUCTION VALVE
18S	TYP. STRIPPING PENETRATION	—	ABOVE DECK PIPING
22S	STRIPPING PUMP	- - -	BELOW DECK PIPING
26S	STRIPPING HEADER BLOCK VALVE		

NOTE 1: CONTAINMENT P/S

STERLING EX: CTCO 320

REV.	DATE	BY	CHK	APP	REVISION DESCRIPTION
0	06/24/20	MRV	DDA	DR	ISSUED FOR APPROVAL

KIRBY INLAND MARINE

STRIPPING PIPING FLOW DIAGRAM

KIRBY 29092

SCALE: NONE	REV. 0
PAGE: 3 OF 3	