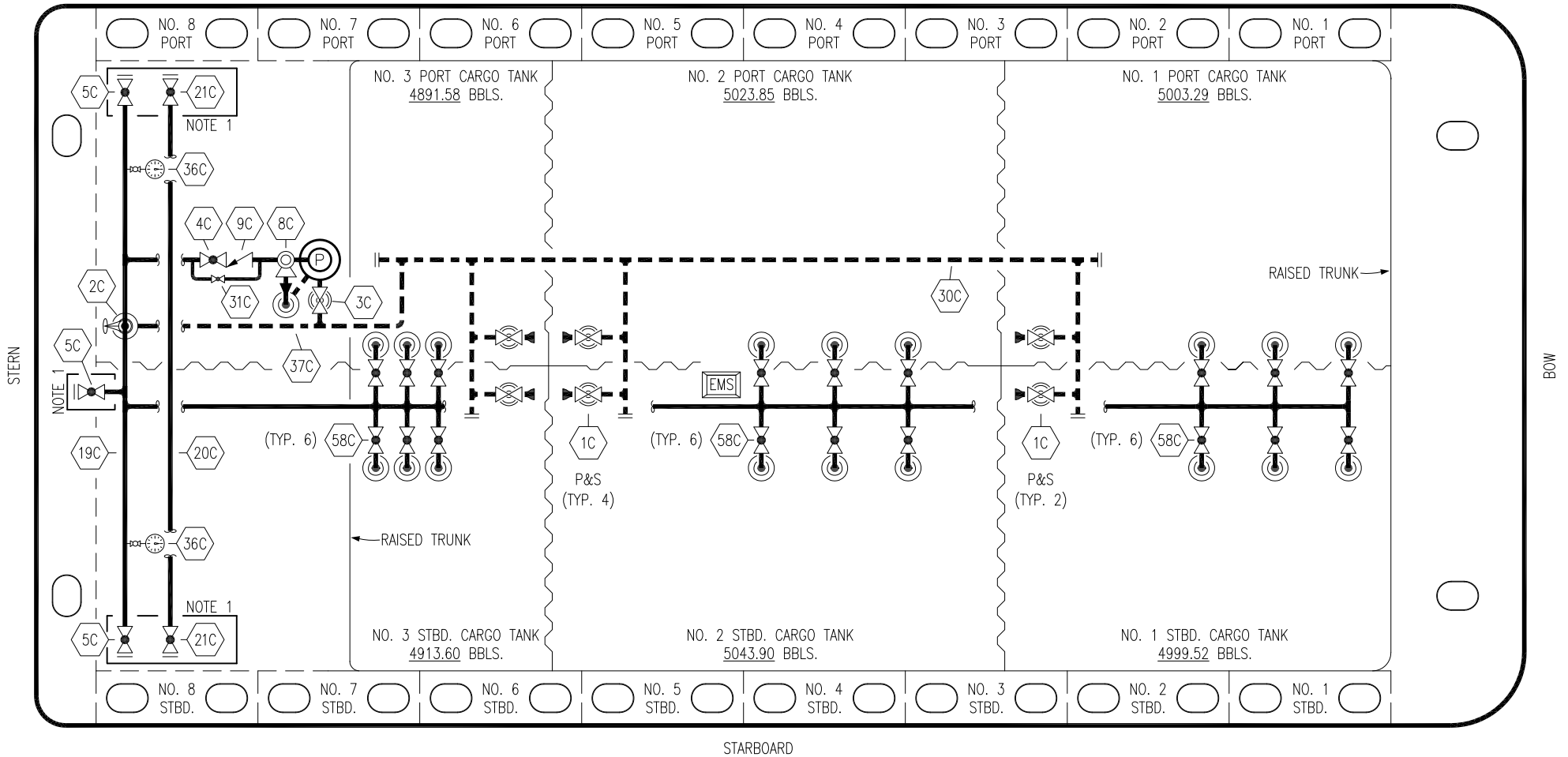


PORT




STARBOARD

- | | | | |
|-----|----------------------|-----|-----------------------|
| NO | DESCRIPTION | NO | DESCRIPTION |
| 1C | CARGO TANK VALVE | 21C | DUMMY HEADER VALVE |
| 2C | LOAD VALVE | 30C | CARGO PIPELINE |
| 3C | MASTER SUCTION VALVE | 31C | BYPASS VALVE |
| 4C | DISCHARGE VALVE | 36C | PRESSURE GAUGE |
| 5C | HEADER VALVE | 37C | CARGO DROP |
| 8C | RELIEF VALVE | 58C | CARGO SUPPLY VALVE |
| 9C | CHECK VALVE | — | — ABOVE DECK PIPING |
| 19C | CARGO HEADER | --- | --- BELOW DECK PIPING |
| 20C | DUMMY HEADER PIPING | | |

NOTE 1: CONTAINMENT P/S

STERLING EX: CTCO 319

REV.	DATE	BY	CHK	APP	REVISION DESCRIPTION
1	06/22/20	MRV	DDA	DR	REVISED BARGE NAME
0	02/15/19	MRV	DDA		ISSUED FOR APPROVAL



KIRBY INLAND MARINE

CARGO

PIPING FLOW DIAGRAM

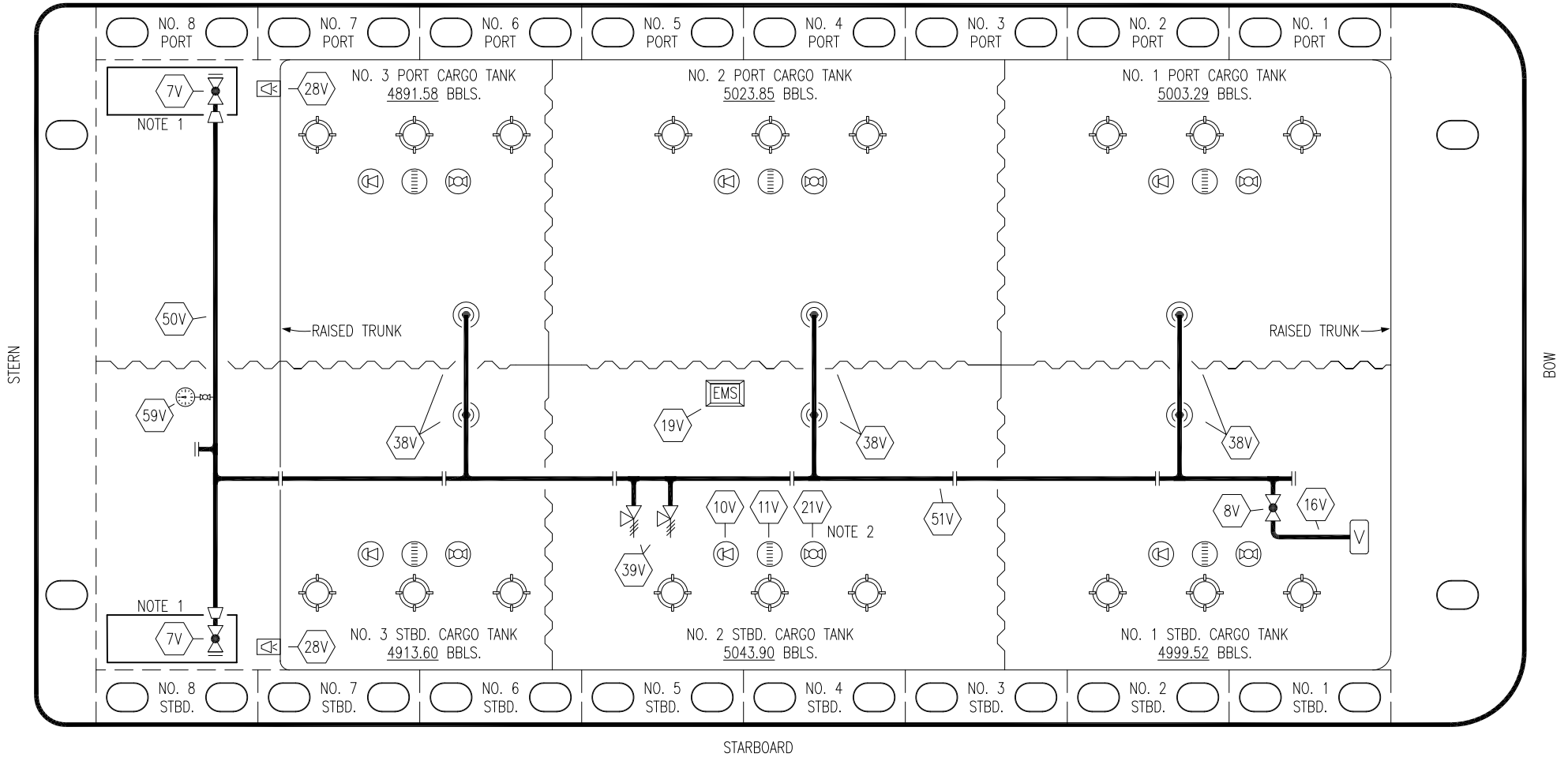
KIRBY 29091

SCALE: NONE

PAGE: 1 OF 3

REV. **1**

PORT



STARBOARD

NO	DESCRIPTION	NO	DESCRIPTION
7V	HEADER VALVE	28V	DOCK CONNECTION ALARM
8V	VENT STACK VALVE	38V	VAPOR PENETRATION
10V	HIGH LEVEL/OVERFILL ALARM	39V	PRESSURE/VACUUM VALVE
11V	1-METER GAUGE STICK	50V	VAPOR HEADER
16V	VAPOR VENT STACK	51V	VAPOR PIPELINE
19V	EMERGENCY ENGINE SHUT DOWN	59V	PRESS/VAC GAUGE
21V	HERMETIC GAUGE		ABOVE DECK PIPING

NOTE 2: TYPICAL RIGGING IN EACH TANK

NOTE 1: CONTAINMENT P/S

STERLING EX: CTCO 319

REV.	DATE	BY	CHK	APP	REVISION DESCRIPTION
1	06/22/20	MRV	DDA	DR	REVISED BARGE NAME
0	02/15/19	MRV	DDA		ISSUED FOR APPROVAL

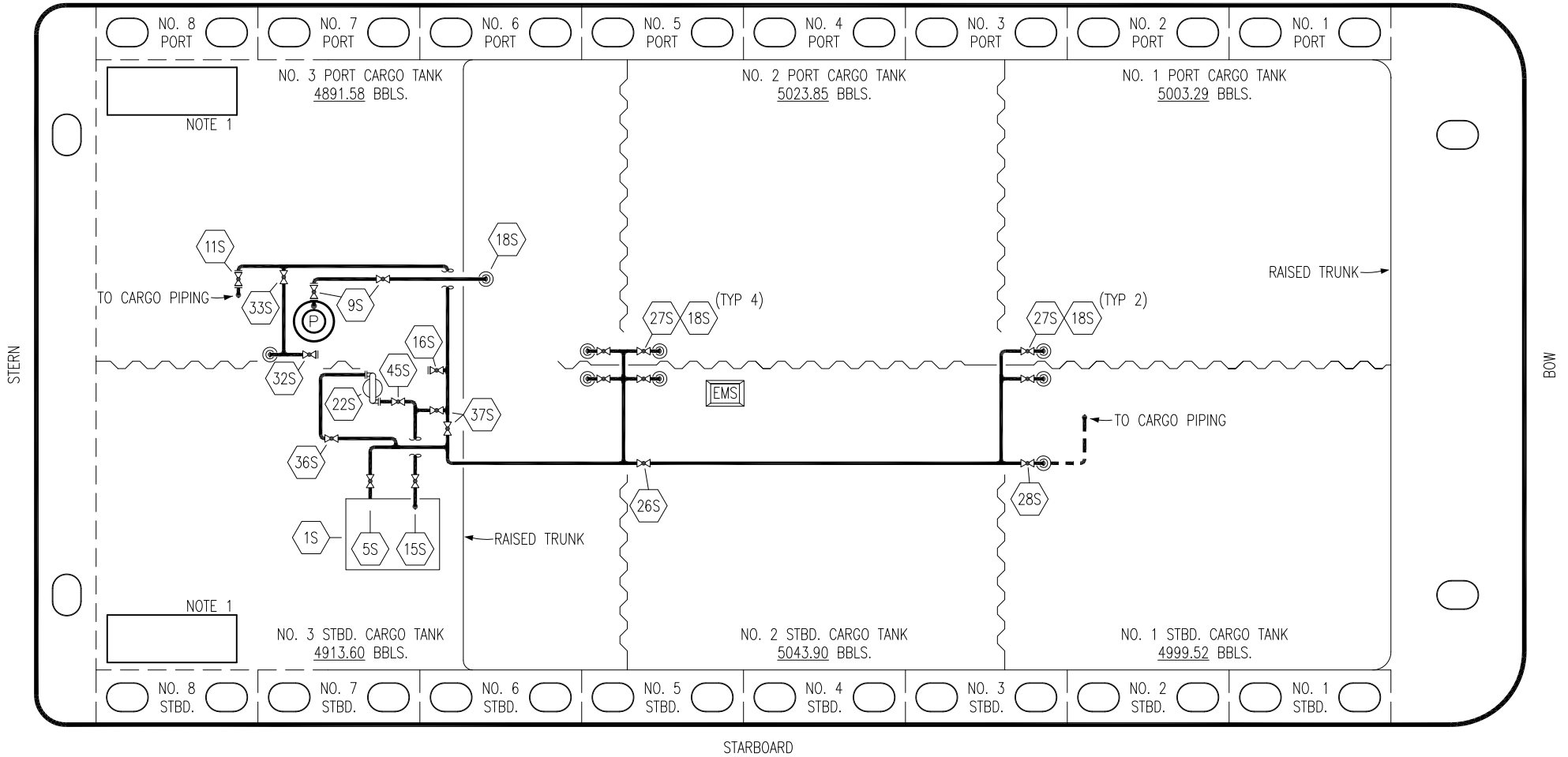
KIRBY INLAND MARINE

**VAPOR
PIPING FLOW DIAGRAM**

SCALE: NONE
PAGE: 2 OF 3

KIRBY 29091 REV. **1**

PORT




NO	DESCRIPTION	NO	DESCRIPTION
1S	SLOP TANK	27S	SUMP SUCTION VALVE
5S	SLOP TANK SUCTION VALVE	28S	CARGO PIPING SUCTION
9S	BURP VALVE	32S	PUMP WELL PRIMER VALVE
10S	STRIPPING PUMP CHECK VALVE	33S	PUMP WELL SUCTION
11S	LOWER CARGO PIPELINE SUCTION VALVE	36S	STRIPPING PUMP DISCHARGE
15S	DISCHARGE VALVE	37S	BLOCK VALVE
16S	REMOTE SUCTION CONNECTION	45S	STRIPPING PUMP SUCTION VALVE
18S	TYP. STRIPPING PENETRATION (TYP 4)	—	— ABOVE DECK PIPING
22S	STRIPPING PUMP	- - -	BELOW DECK PIPING
26S	STRIPPING HEADER BLOCK VALVE		

NOTE 1: CONTAINMENT P/S

STERLING EX: CTCO 319

REV.	DATE	BY	CHK	APP	REVISION DESCRIPTION
0	06/22/20	MRV	DDA	DR	ISSUED FOR APPROVAL



KIRBY INLAND MARINE

**STRIPPING
PIPING FLOW DIAGRAM**

KIRBY 29091

SCALE: NONE

PAGE: 3 OF 3

REV. **0**