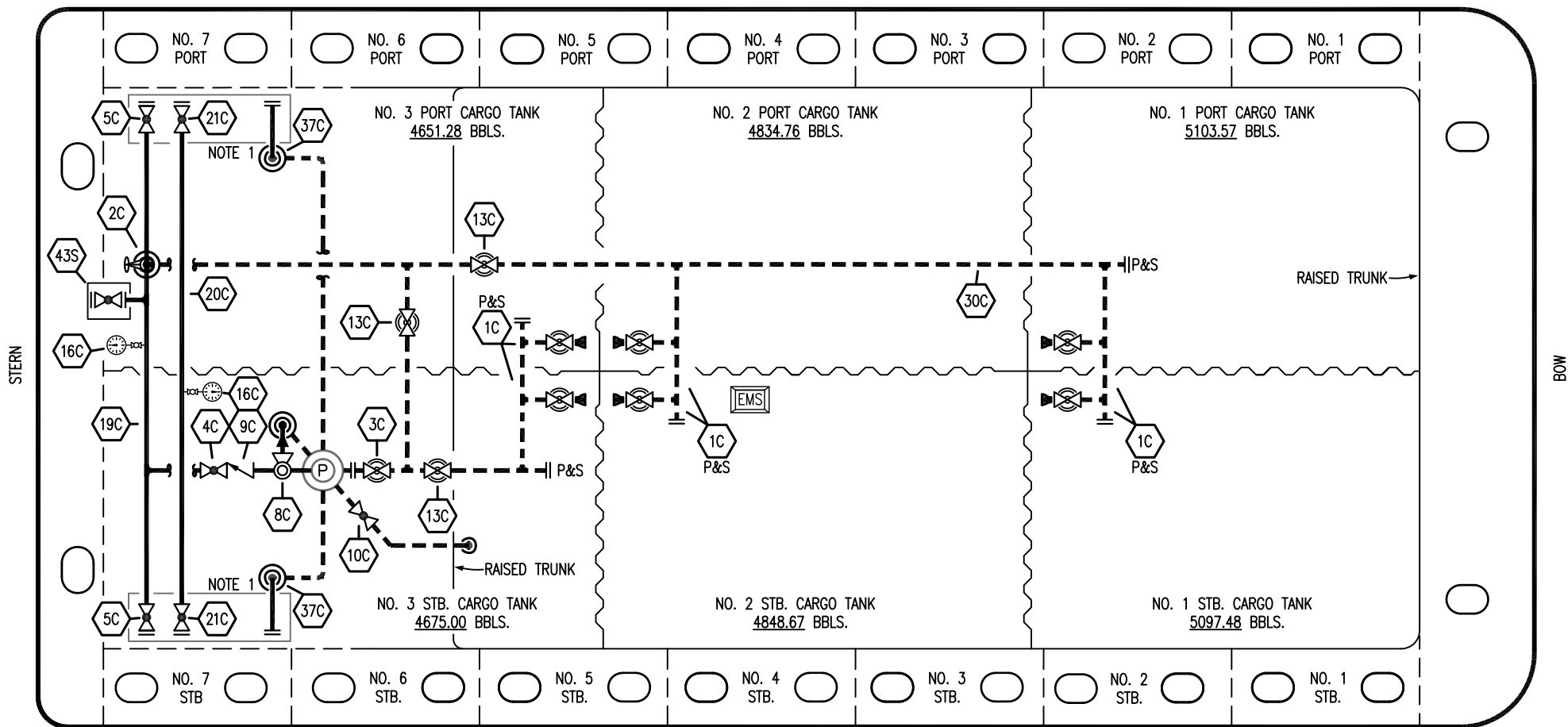


PORT



STARBOARD

NO	DESCRIPTION	NO	DESCRIPTION
1C	CARGO TANK VALVE	20C	DUMMY HEADER PIPING
2C	LOAD VALVE	21C	DUMMY HEADER VALVE
3C	MASTER SUCTION VALVE	30C	CARGO PIPELINE
4C	DISCHARGE VALVE	37C	CARGO DROP
5C	HEADER VALVE	43S	STERN HEADER VALVE
8C	RELIEF VALVE	—	— ABOVE DECK PIPING
9C	CHECK VALVE	- - -	- - - BELOW DECK PIPING
10C	BURP VALVE		
13C	CARGO PIPING BLOCK VALVE		
16C	PRESSURE GAUGE		
19C	CARGO HEADER		

NOTE 1: CONTAINMENT P/S

TRINITY - EX. CTGO 316

REV.	DATE	BY	CHK	APP	REVISION DESCRIPTION
1	12/19/23	MRV	DDA	FIX	REVISED PER CLIENT COMMENTS
0	02/15/19	MRV	DDA		ISSUED FOR APPROVAL

KIRBY INLAND MARINE

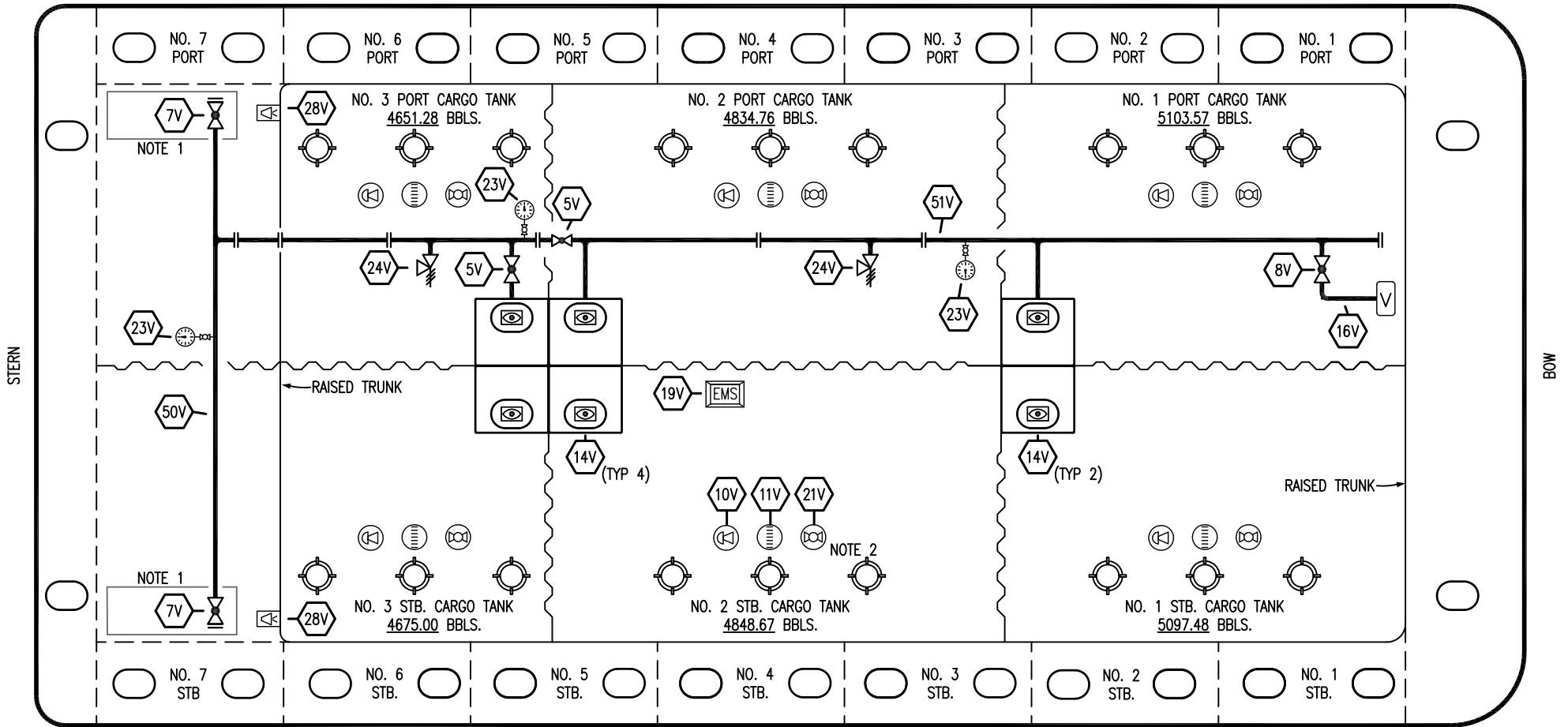
**CARGO
PIPING FLOW DIAGRAM**

SCALE: NONE
PAGE: 1 OF 3

KIRBY 29088

REV. **1**

PORT



STARBOARD

- | | | | |
|-----|---------------------------|----------|----------------------------|
| NO | DESCRIPTION | NO | DESCRIPTION |
| 5V | BLOCK VALVE | 19V | EMERGENCY ENGINE SHUT DOWN |
| 7V | HEADER VALVE | 21V | HERMETIC GAUGE |
| 8V | VENT STACK VALVE | 23V | PRESSURE GAUGE |
| 10V | HIGH LEVEL/OVERFILL ALARM | 24V | PRESSURE RELIEF VALVE |
| 11V | 1-METER GAUGE STICK | 28V | DOCK CONNECTION ALARM |
| 14V | SIGHT GLASS | 50V | VAPOR HEADER |
| 16V | VAPOR VENT STACK | 51V | VAPOR PIPELINE |
| | | — | ABOVE DECK PIPING |

NOTE 2: TYPICAL RIGGING IN EACH TANK

NOTE 1: CONTAINMENT P/S

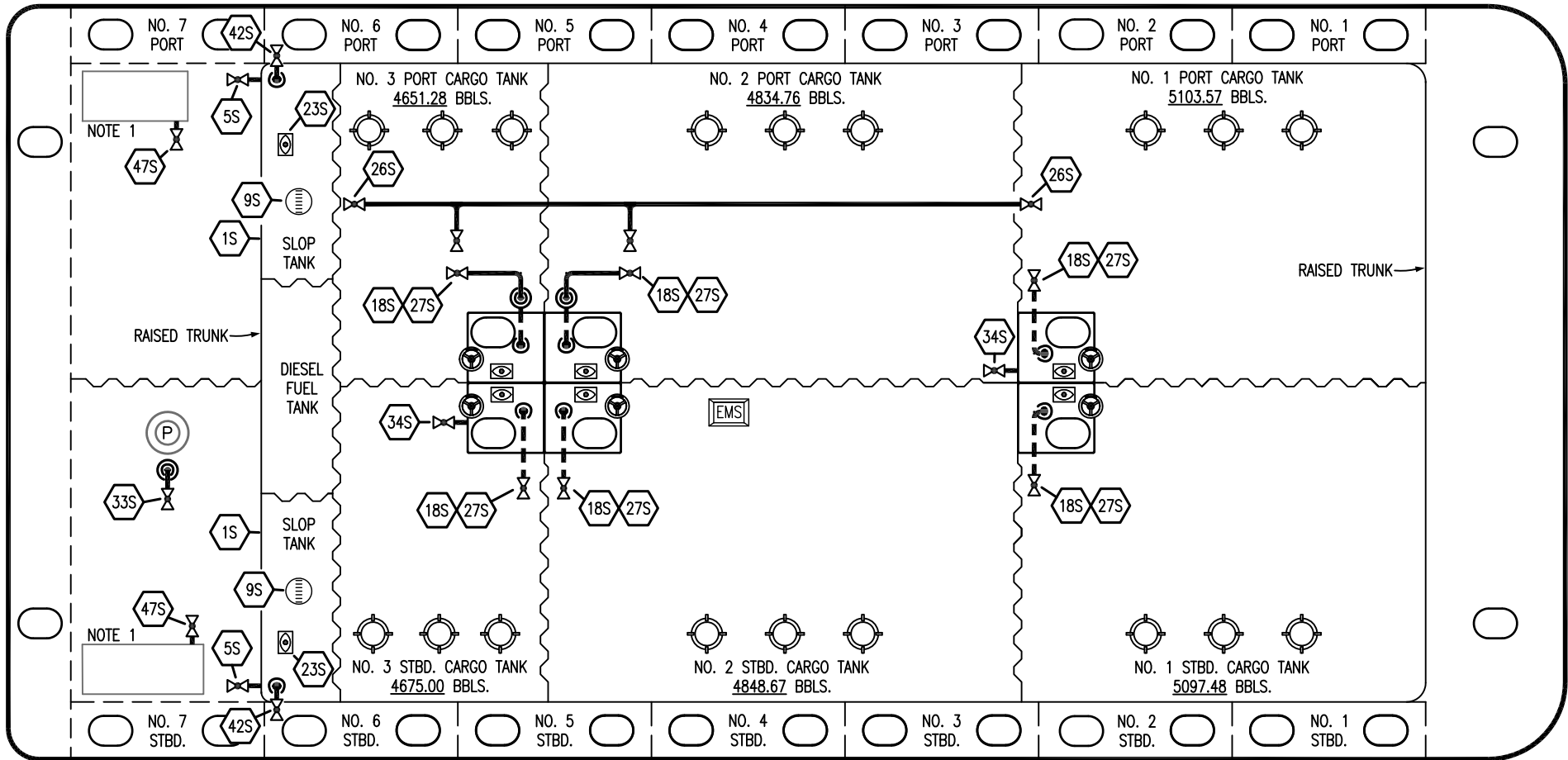
TRINITY - EX. CTGO 316

REV.	DATE	BY	CHK	APP	REVISION DESCRIPTION
1	12/19/23	MRV	DDA	FIX	REVISED PER CLIENT COMMENTS
0	02/15/19	MRV	DDA		ISSUED FOR APPROVAL

KIRBY INLAND MARINE 

VAPOR PIPING FLOW DIAGRAM


PORT



STERN

BOW

STARBOARD

NO	DESCRIPTION	NO	DESCRIPTION
1S	SLOP TANK	23S	FLOW INDICATOR (PIPE SIGHT GLASS)
2S	CARGO SUMP SUCTION VALVE	26S	HEADER BLOCK VALVE
4S	CARGO TANK SUCTION VALVE	27S	SUMP SUCTION VALVE
5S	SLOP TANK SUCTION VALVE	33S	DEEP WELL CAN STRIPPING VALVE
6S	SUCTION HEADER PIPING	34S	STRIPPING PIPELINE
7S	SLOP TANK VALVE	35S	STRIPPING VALVE
8S	DISCHARGE HEADER PIPING	40S	HEADER SUCTION VALVE
9S	METER STICK	42S	SLOP TANK FILL VALVE
18S	STRIPPING DROP 	47S	DRIP PAN STRIPPING VALVE
		—	ABOVE DECK PIPING
		- - -	BELOW DECK PIPING

NOTE 1: CONTAINMENT P/S

TRINITY - EX. CTCO 316

REV.	DATE	BY	CHK	APP	REVISION DESCRIPTION
0	12/19/23	MRV	DDA	FIX	ISSUED FOR APPROVAL

KIRBY INLAND MARINE 

**STRIPPING
PIPING FLOW DIAGRAM**

SCALE: NONE
PAGE: 3 OF 3

KIRBY 29088

REV. **0**