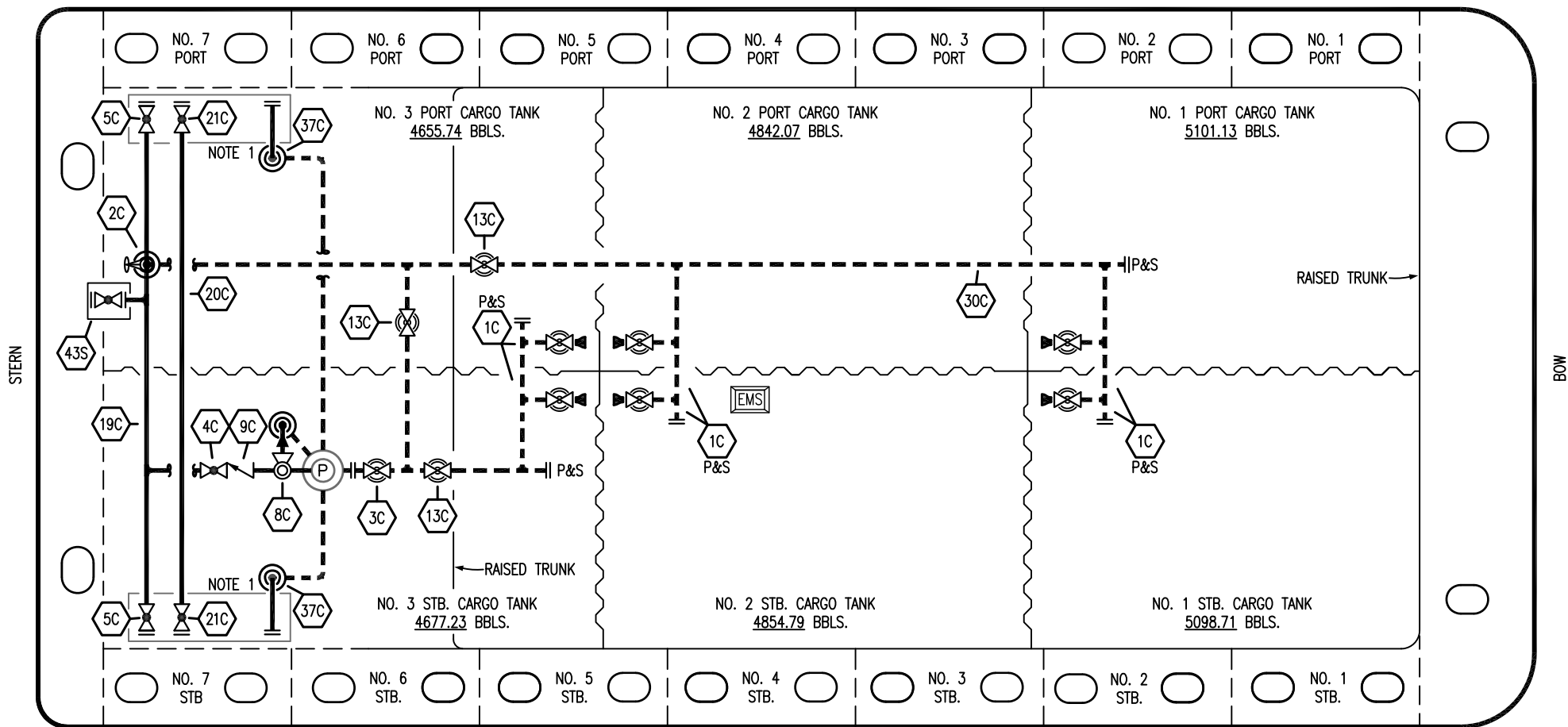


PORT



STARBOARD

NO	DESCRIPTION	NO	DESCRIPTION
1C	CARGO TANK VALVE	20C	DUMMY HEADER PIPING
2C	LOAD VALVE	21C	DUMMY HEADER VALVE
3C	MASTER SUCTION VALVE	30C	CARGO PIPELINE
4C	DISCHARGE VALVE	37C	CARGO DROP
5C	HEADER VALVE	43S	STERN HEADER VALVE
8C	RELIEF VALVE	—	— ABOVE DECK PIPING
9C	CHECK VALVE	---	--- BELOW DECK PIPING
13C	CARGO PIPING BLOCK VALVE		
19C	CARGO HEADER		

NOTE 1: CONTAINMENT P/S

TRINITY -- EX. CTCO 315

REV.	DATE	BY	CHK	APP	REVISION DESCRIPTION
2	12/05/23	MRV	DDA	DTC	REVISED PER CLIENT COMMENTS
1	01/12/22	MRV	DDA	DL	REVISED PER CLIENT COMMENTS
0	02/15/19	MRV	DDA		ISSUED FOR APPROVAL

KIRBY INLAND MARINE

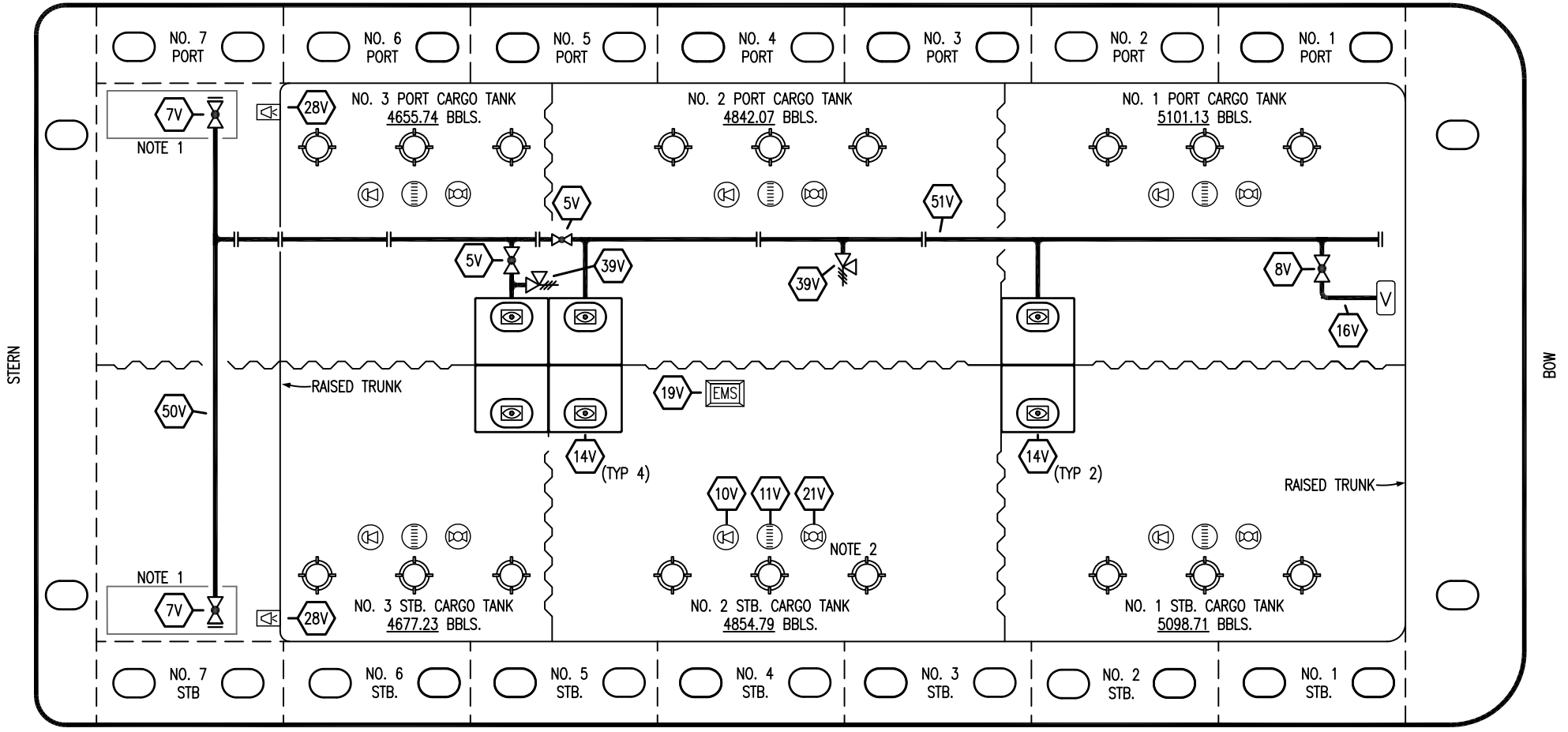
**CARGO
PIPING FLOW DIAGRAM**

SCALE: NONE
PAGE: 1 OF 2

KIRBY 29087

REV. **2**

PORT



STARBOARD

- | | | | |
|-----|---------------------------|-----|------------------------------|
| NO | DESCRIPTION | NO | DESCRIPTION |
| 5V | BLOCK VALVE | 19V | EMERGENCY ENGINE SHUT DOWN |
| 7V | HEADER VALVE | 21V | HERMETIC GAUGE |
| 8V | VENT STACK VALVE | 28V | DOCK CONNECTION ALARM |
| 10V | HIGH LEVEL/OVERFILL ALARM | 39V | PRESSURE/VACUUM RELIEF VALVE |
| 11V | 1-METER GAUGE STICK | 50V | VAPOR HEADER |
| 14V | SIGHT GLASS | 51V | VAPOR PIPELINE |
| 16V | VAPOR VENT STACK | — | ABOVE DECK PIPING |

NOTE 2: TYPICAL RIGGING IN EACH TANK
 NOTE 1: CONTAINMENT P/S

TRINITY -- EX. CTCO 315

REV.	DATE	BY	CHK	APP	REVISION DESCRIPTION
2	12/05/23	MRV	DDA	DTC	REVISED PER CLIENT COMMENTS
1	01/12/22	MRV	DDA	DL	REVISED PER CLIENT COMMENTS
0	02/15/19	MRV	DDA		ISSUED FOR APPROVAL

KIRBY INLAND MARINE

VAPOR PIPING FLOW DIAGRAM

SCALE: NONE	KIRBY 29087	REV. 2
PAGE: 2 OF 2		