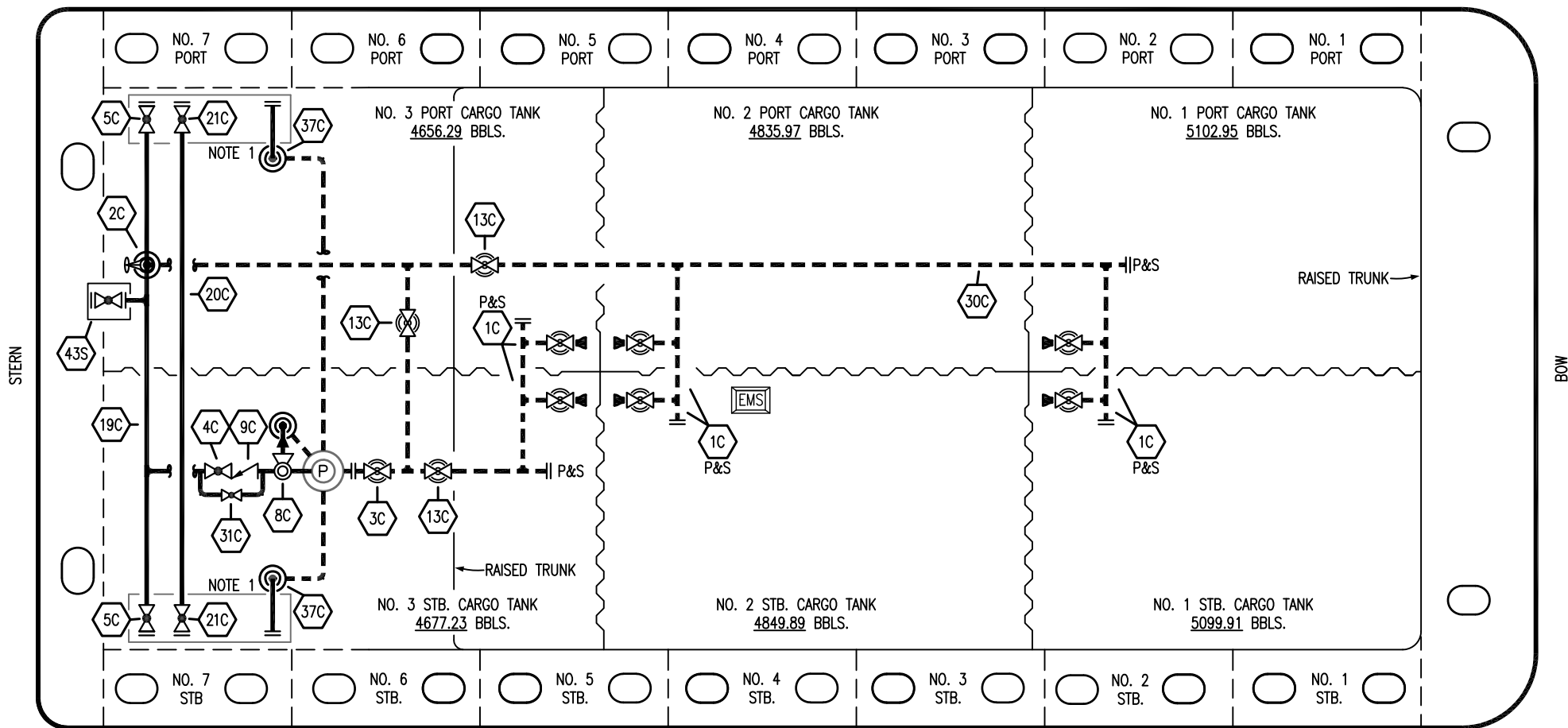


PORT



STARBOARD

- | | | | |
|-----|--------------------------|-------|---------------------|
| NO | DESCRIPTION | NO | DESCRIPTION |
| 1C | CARGO TANK VALVE | 20C | DUMMY HEADER PIPING |
| 2C | LOAD VALVE | 21C | DUMMY HEADER VALVE |
| 3C | MASTER SUCTION VALVE | 30C | CARGO PIPELINE |
| 4C | DISCHARGE VALVE | 31C | BYPASS VALVE |
| 5C | HEADER VALVE | 37C | CARGO DROP |
| 8C | RELIEF VALVE | 43S | STERN HEADER VALVE |
| 9C | CHECK VALVE | — | ABOVE DECK PIPING |
| 13C | CARGO PIPING BLOCK VALVE | - - - | BELOW DECK PIPING |
| 19C | CARGO HEADER | | |

NOTE 1: CONTAINMENT P/S

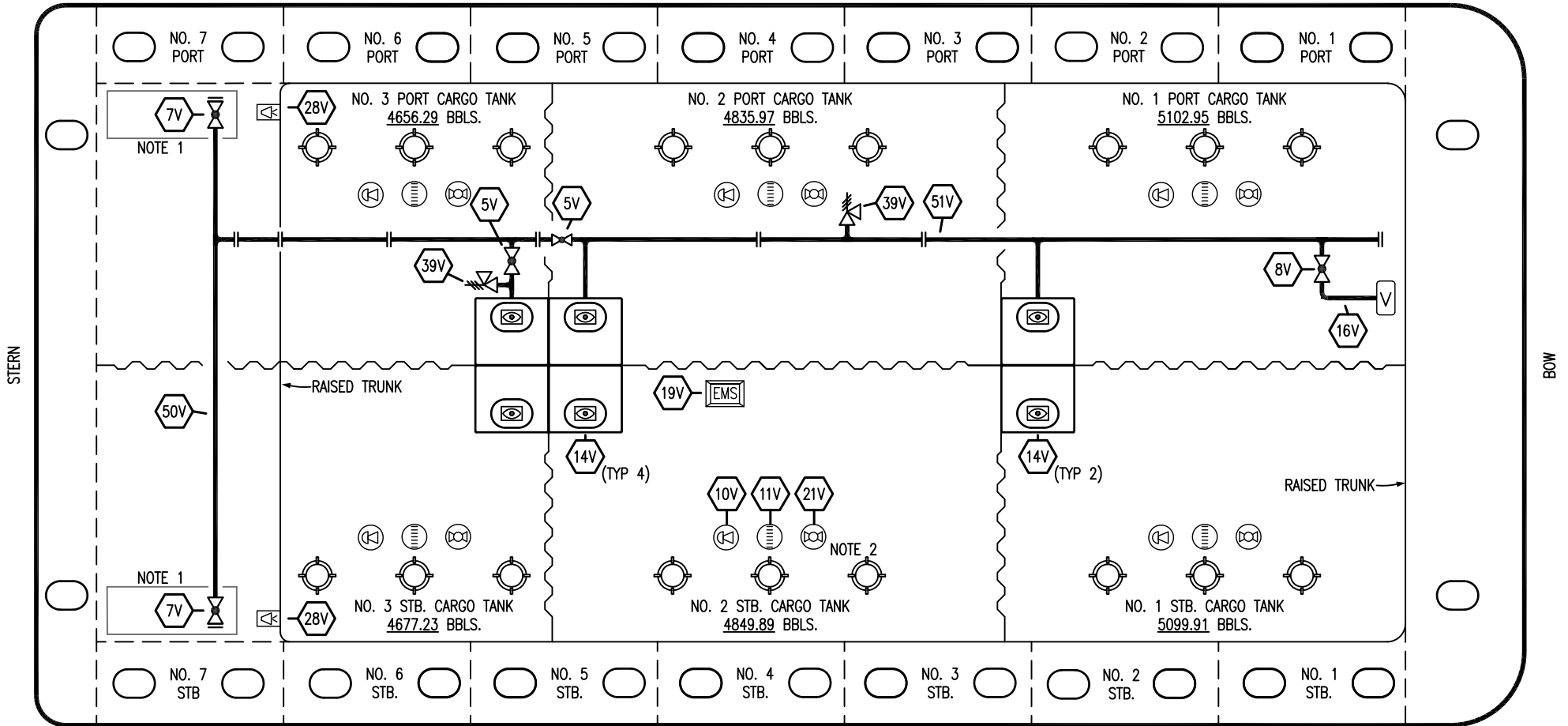
TRINITY -- CTCO 314

REV.	DATE	BY	CHK	APP	REVISION DESCRIPTION
1	12/05/23	MRV	DDA	TFB	REVISED PER CLIENT COMMENTS
0	02/15/19	MRV	DDA		ISSUED FOR APPROVAL

KIRBY INLAND MARINE 

**CARGO
PIPING FLOW DIAGRAM**

PORT



STARBOARD

- | | | | |
|-----|---------------------------|-----|------------------------------|
| NO | DESCRIPTION | NO | DESCRIPTION |
| 5V | BLOCK VALVE | 19V | EMERGENCY ENGINE SHUT DOWN |
| 7V | HEADER VALVE | 21V | HERMETIC GAUGE |
| 8V | VENT STACK VALVE | 28V | DOCK CONNECTION ALARM |
| 10V | HIGH LEVEL/OVERFILL ALARM | 39V | PRESSURE/VACUUM RELIEF VALVE |
| 11V | 1-METER GAUGE STICK | 50V | VAPOR HEADER |
| 14V | SIGHT GLASS | 51V | VAPOR PIPELINE |
| 16V | VAPOR VENT STACK | — | ABOVE DECK PIPING |

NOTE 2: TYPICAL RIGGING IN EACH TANK
 NOTE 1: CONTAINMENT P/S

TRINITY -- EX. CTCO 314

REV.	DATE	BY	CHK	APP	REVISION DESCRIPTION
1	12/05/23	MRV	DDA	TFB	REVISED PER CLIENT COMMENTS
0	02/15/19	MRV	DDA		ISSUED FOR APPROVAL

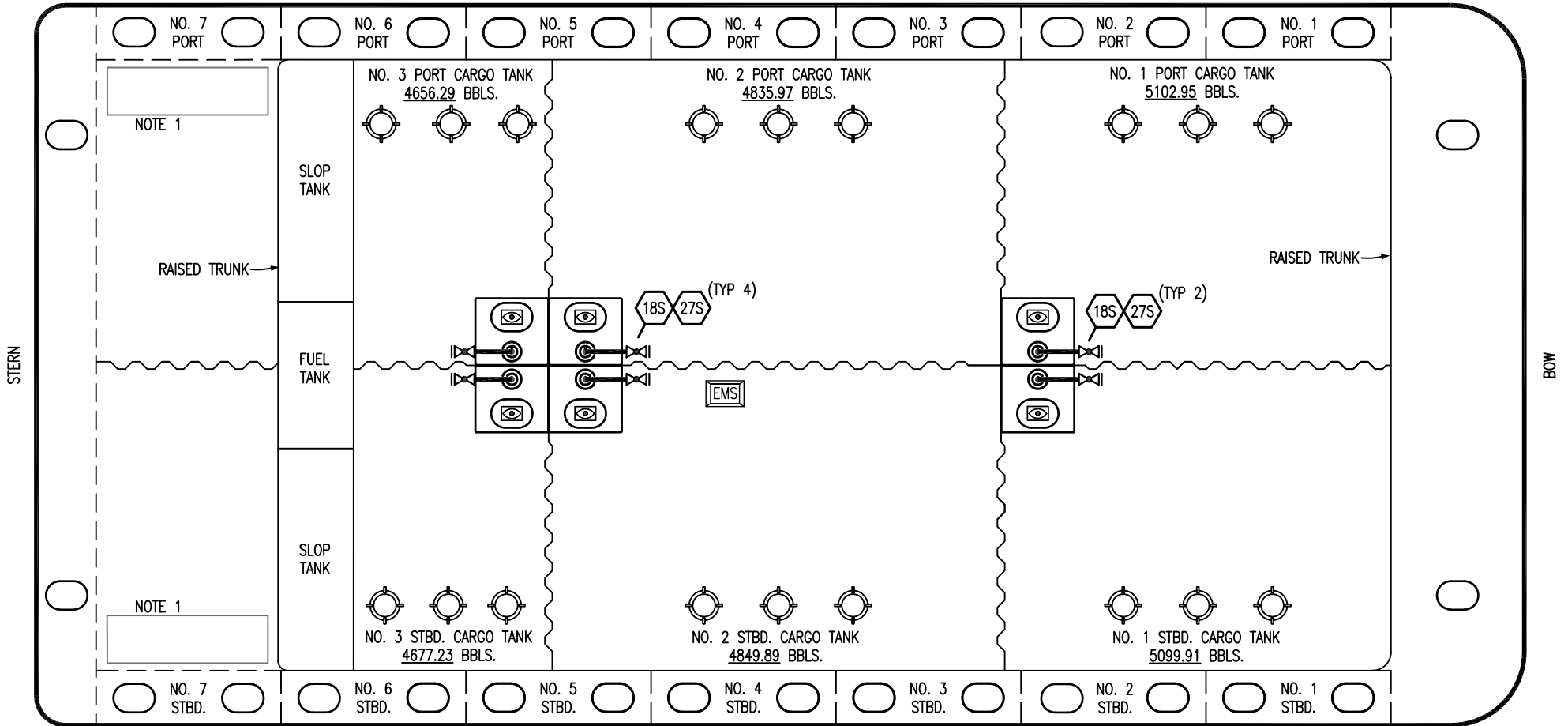
KIRBY INLAND MARINE

VAPOR PIPING FLOW DIAGRAM

KIRBY 29086

SCALE: NONE	REV. 1
PAGE: 2 OF 3	

PORT



- | | | | |
|-----|----------------------------|-------|--------------------|
| NO | DESCRIPTION | NO | DESCRIPTION |
| 1S | SLOP TANK | 27S | SUMP SUCTION VALVE |
| 18S | TYP. STRIPPING PENETRATION | — | ABOVE DECK PIPING |
| | | - - - | BELOW DECK PIPING |

STARBOARD

NOTE 1: CONTAINMENT P/S

TRINITY - EX. CTCO 314

						KIRBY INLAND MARINE	
						STRIPPING	
						PIPING FLOW DIAGRAM	
0	12/05/23	MRV	DDA	TFB	ISSUED FOR APPROVAL	SCALE: NONE	KIRBY 29086
REV.	DATE	BY	CHK	APP	REVISION DESCRIPTION	PAGE: 3 OF 3	
						REV. 0	