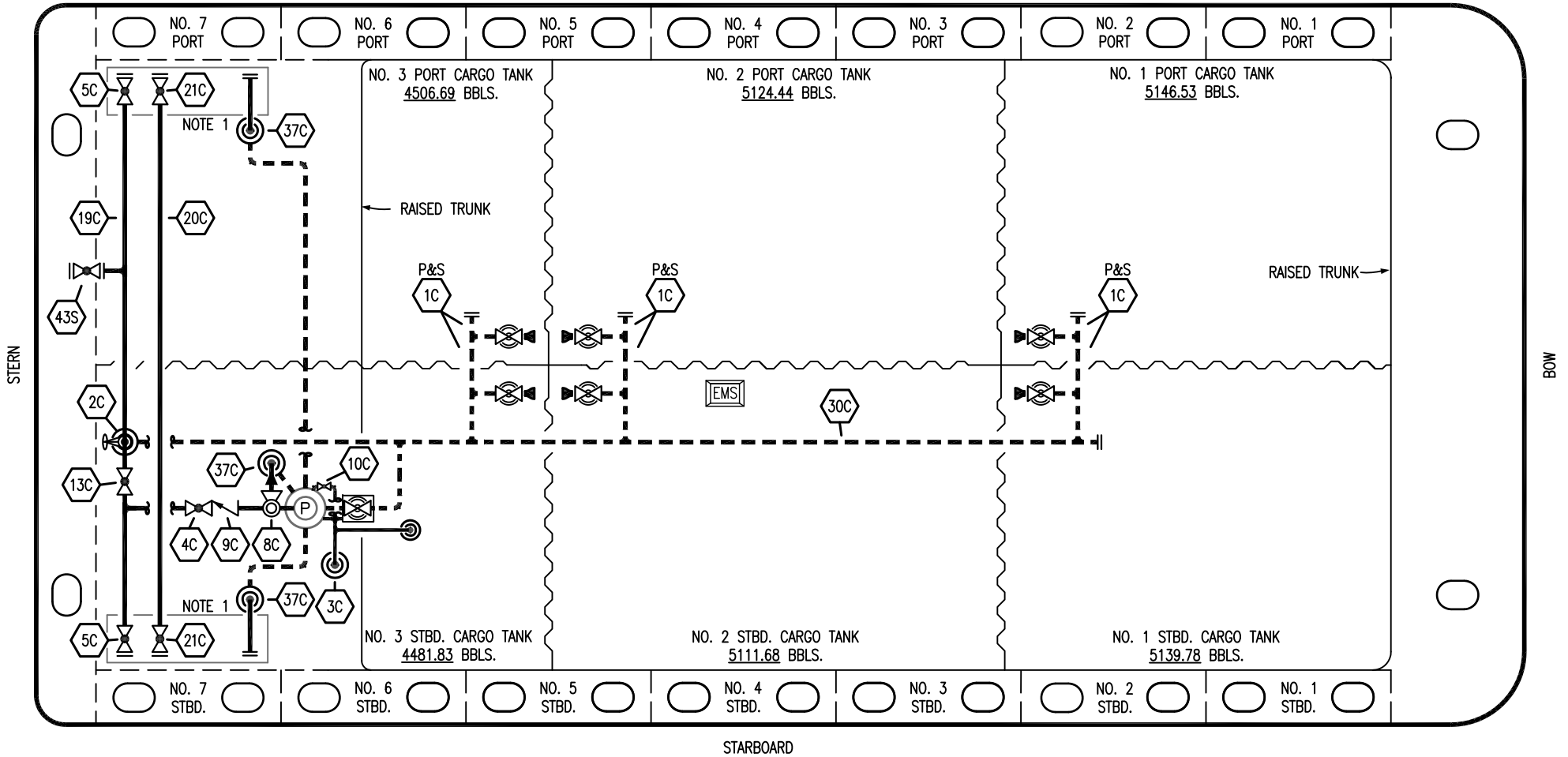


PORT



STARBOARD

- |     |                      |       |                          |
|-----|----------------------|-------|--------------------------|
| NO  | DESCRIPTION          | NO    | DESCRIPTION              |
| 1C  | CARGO TANK VALVE     | 13C   | CARGO PIPING BLOCK VALVE |
| 2C  | LOAD VALVE           | 19C   | CARGO HEADER             |
| 3C  | MASTER SUCTION VALVE | 20C   | DUMMY HEADER PIPING      |
| 4C  | DISCHARGE VALVE      | 21C   | DUMMY HEADER VALVE       |
| 5C  | HEADER VALVE         | 30C   | CARGO PIPELINE           |
| 8C  | RELIEF VALVE         | 37C   | CARGO DROP               |
| 9C  | CHECK VALVE          | —     | ABOVE DECK PIPING        |
| 10C | BURP VALVE           | - - - | BELOW DECK PIPING        |

NOTE 1: CONTAINMENT P/S

CONRAD -- EX. CTCO 254

| REV. | DATE     | BY  | CHK | APP | REVISION DESCRIPTION        |
|------|----------|-----|-----|-----|-----------------------------|
| 1    | 10/05/23 | MRV | DDA | LEP | REVISED PER CLIENT COMMENTS |
| 0    | 02/15/19 | MRV | DDA |     | ISSUED FOR APPROVAL         |

KIRBY INLAND MARINE

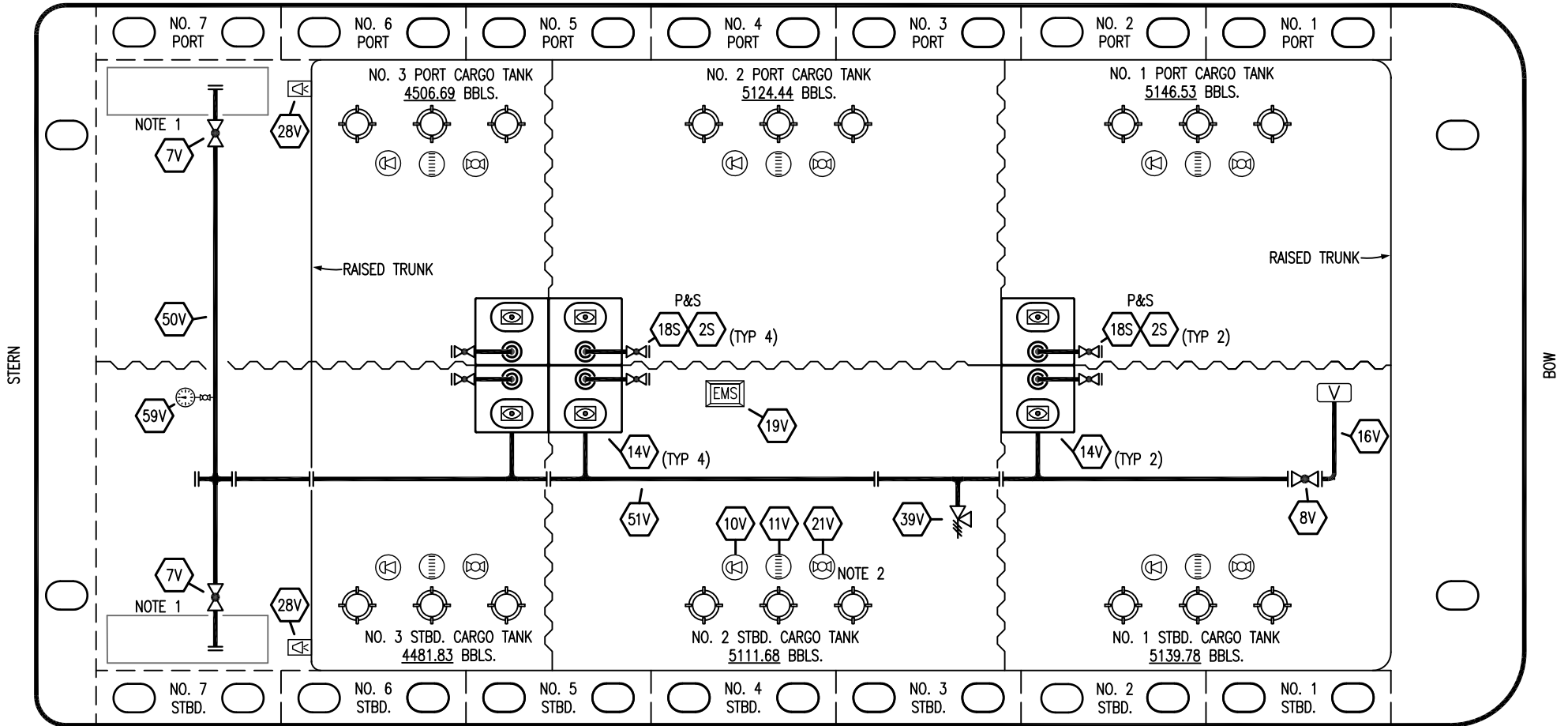
CARGO  
PIPING FLOW DIAGRAM

KIRBY 29084

REV. 1

SCALE: NONE  
PAGE: 1 OF 3

PORT




STARBOARD

- |     |                            |     |                          |
|-----|----------------------------|-----|--------------------------|
| NO  | DESCRIPTION                | NO  | DESCRIPTION              |
| 7V  | HEADER VALVE               | 28V | DOCK CONNECTION ALARM    |
| 8V  | VENT STACK VALVE           | 50V | VAPOR HEADER             |
| 10V | HIGH LEVEL/OVERFILL ALARM  | 51V | VAPOR PIPELINE           |
| 11V | 1-METER GAUGE STICK        | 59V | PRESS/VAC GAUGE          |
| 14V | SIGHT GLASS                | 2S  | CARGO SUMP SUCTION VALVE |
| 19V | EMERGENCY ENGINE SHUT DOWN | 18S | STRIPPING DROP           |
| 21V | HERMETIC GAUGE             | —   | ABOVE DECK PIPING        |

NOTE 2: TYPICAL RIGGING IN EACH TANK  
 NOTE 1: CONTAINMENT P/S

CONRAD -- EX. CTCO 254

| REV. | DATE     | BY  | CHK | APP | REVISION DESCRIPTION        |
|------|----------|-----|-----|-----|-----------------------------|
| 1    | 10/05/23 | MRV | DDA | LEP | REVISED PER CLIENT COMMENTS |
| 0    | 02/15/18 | MRV | DDA |     | ISSUED FOR APPROVAL         |



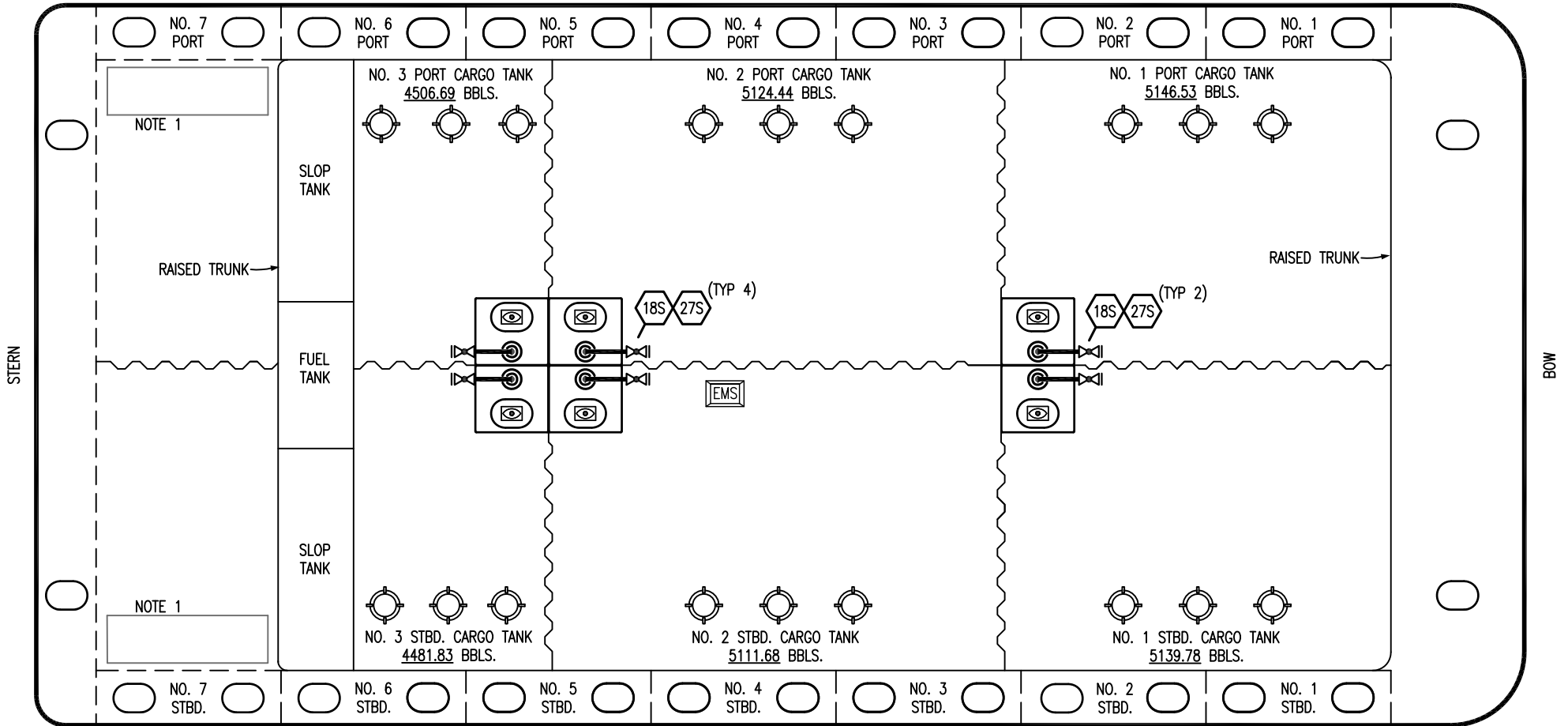
**KIRBY INLAND MARINE**

**VAPOR PIPING FLOW DIAGRAM**

**KIRBY 29084**

|              |        |
|--------------|--------|
| SCALE: NONE  | REV. 1 |
| PAGE: 2 OF 3 |        |

PORT




- |     |                            |       |                    |
|-----|----------------------------|-------|--------------------|
| NO  | DESCRIPTION                | NO    | DESCRIPTION        |
| 1S  | SLOP TANK                  | 27S   | SUMP SUCTION VALVE |
| 18S | TYP. STRIPPING PENETRATION | —     | ABOVE DECK PIPING  |
|     |                            | - - - | BELOW DECK PIPING  |

STARBOARD

NOTE 1: CONTAINMENT P/S

CONARD - EX CTCO 254

|      |          |     |     |     |                      |  |                    |
|------|----------|-----|-----|-----|----------------------|--|--------------------|
|      |          |     |     |     |                      | <b>KIRBY INLAND MARINE</b>  |                    |
|      |          |     |     |     |                      |  |                    |
| 0    | 10/05/23 | MRV | DDA | LEP | ISSUED FOR APPROVAL  | SCALE: NONE  | <b>KIRBY 29084</b> |
| REV. | DATE     | BY  | CHK | APP | REVISION DESCRIPTION | PAGE: 3 OF 3   |                    |