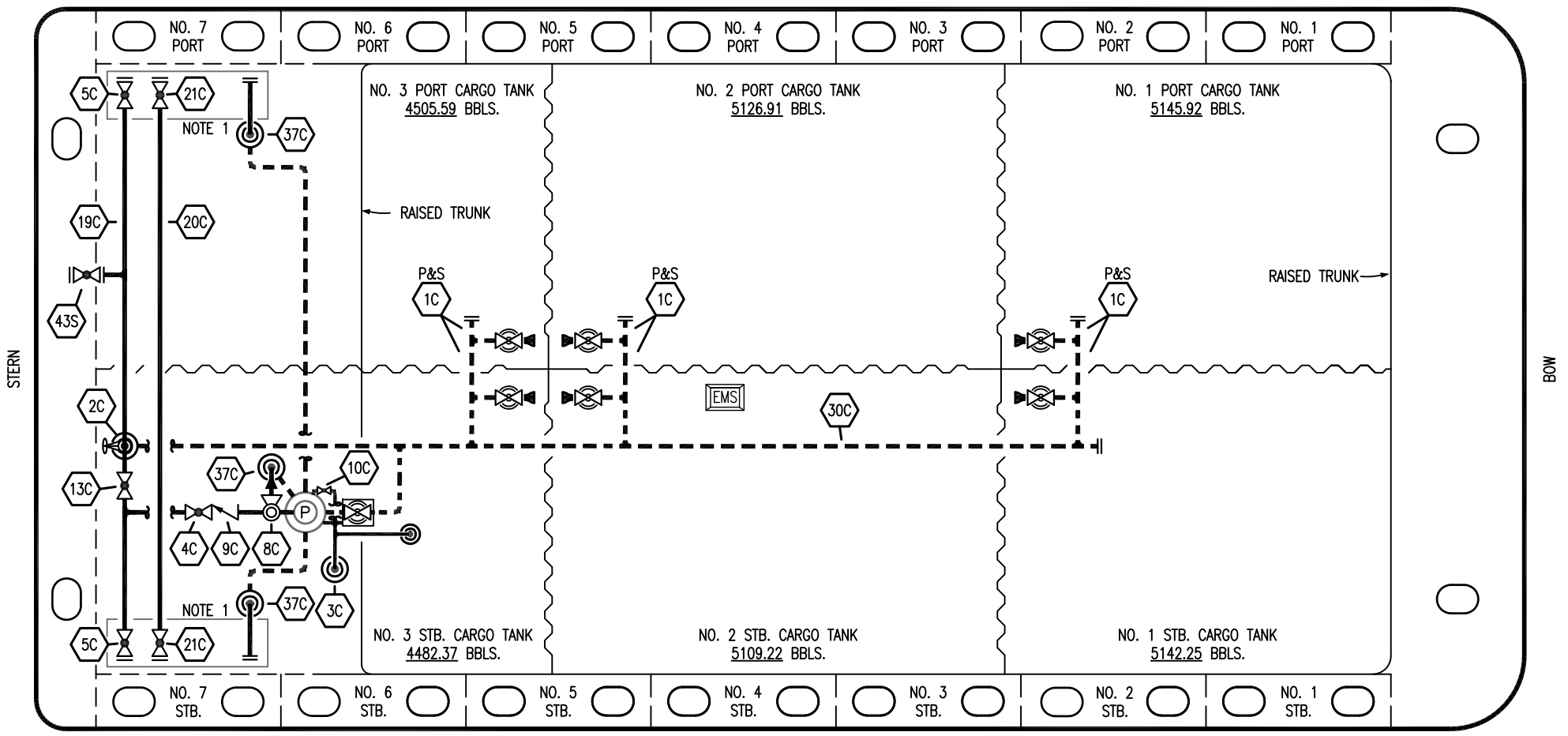


PORT



STARBOARD

- | | | | |
|-----|----------------------|-------|--------------------------|
| NO | DESCRIPTION | NO | DESCRIPTION |
| 1C | CARGO TANK VALVE | 13C | CARGO PIPING BLOCK VALVE |
| 2C | LOAD VALVE | 19C | CARGO HEADER |
| 3C | MASTER SUCTION VALVE | 20C | DUMMY HEADER PIPING |
| 4C | DISCHARGE VALVE | 21C | DUMMY HEADER VALVE |
| 5C | HEADER VALVE | 30C | CARGO PIPELINE |
| 8C | RELIEF VALVE | 37C | CARGO DROP |
| 9C | CHECK VALVE | — | — ABOVE DECK PIPING |
| 10C | BURP VALVE | - - - | - - - BELOW DECK PIPING |

NOTE 1: CONTAINMENT P/S

CONRAD -- EX. CTCO 253

REV.	DATE	BY	CHK	APP	REVISION DESCRIPTION
1	07/12/23	MRV	DDA	LEP	REVISED PER CLIENT COMMENTS
0	02/15/19	MRV	DDA		ISSUED FOR APPROVAL

KIRBY INLAND MARINE

CARGO

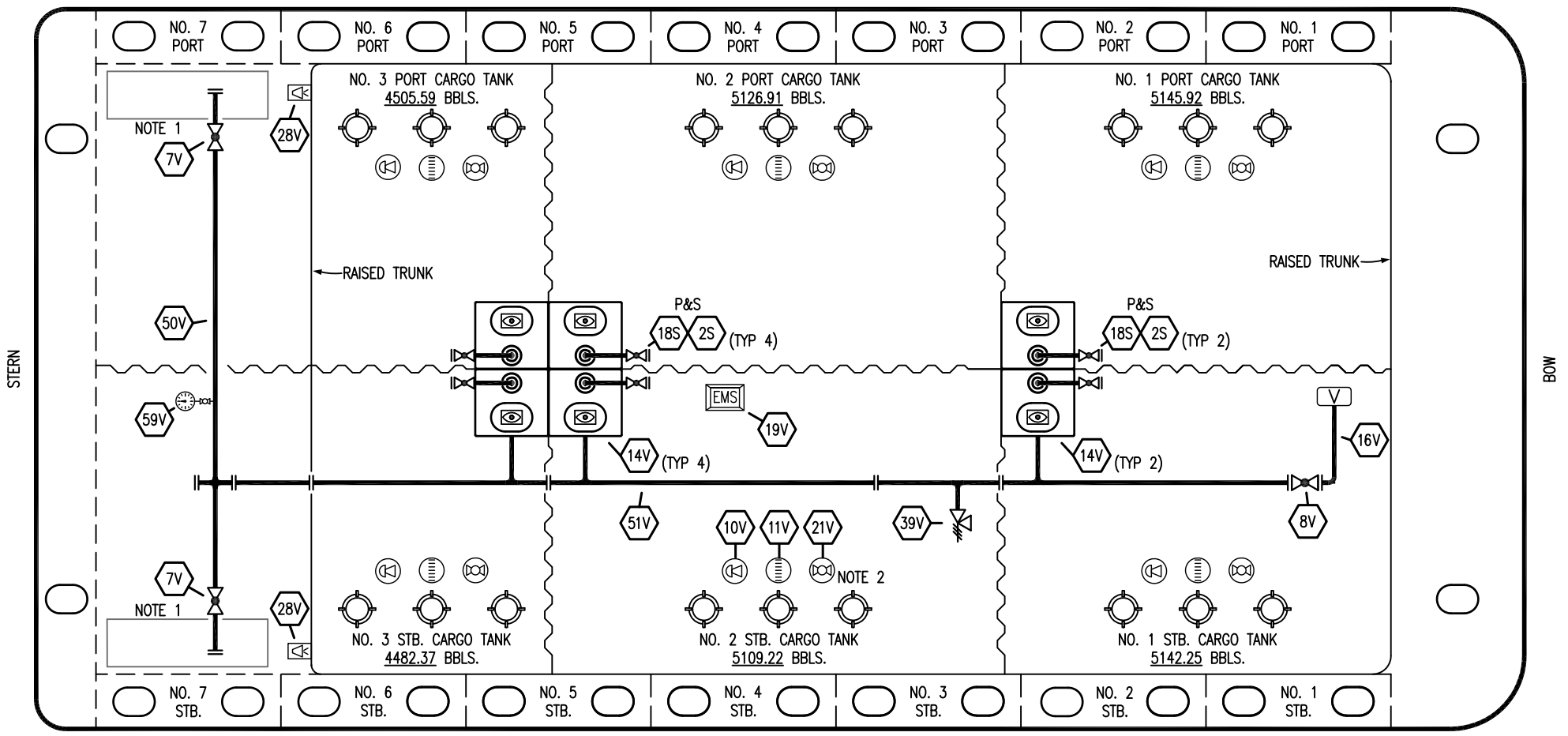
PIPING FLOW DIAGRAM

KIRBY 29083

REV. **1**

SCALE: NONE
PAGE: 1 OF 3

PORT



STARBOARD

- | | | | |
|-----|----------------------------|-----|--------------------------|
| NO | DESCRIPTION | NO | DESCRIPTION |
| 7V | HEADER VALVE | 28V | DOCK CONNECTION ALARM |
| 8V | VENT STACK VALVE | 50V | VAPOR HEADER |
| 10V | HIGH LEVEL/OVERFILL ALARM | 51V | VAPOR PIPELINE |
| 11V | 1-METER GAUGE STICK | 59V | PRESS/VAC GAUGE |
| 14V | SIGHT GLASS | 2S | CARGO SUMP SUCTION VALVE |
| 19V | EMERGENCY ENGINE SHUT DOWN | 18S | STRIPPING DROP |
| 21V | HERMETIC GAUGE | — | ABOVE DECK PIPING |

NOTE 2: TYPICAL RIGGING IN EACH TANK
 NOTE 1: CONTAINMENT P/S

CONRAD -- EX. CTCO 253

REV.	DATE	BY	CHK	APP	REVISION DESCRIPTION
1	07/12/23	MRV	DDA	LEP	REVISED PER CLIENT COMMENTS
0	02/15/18	MRV	DDA		ISSUED FOR APPROVAL

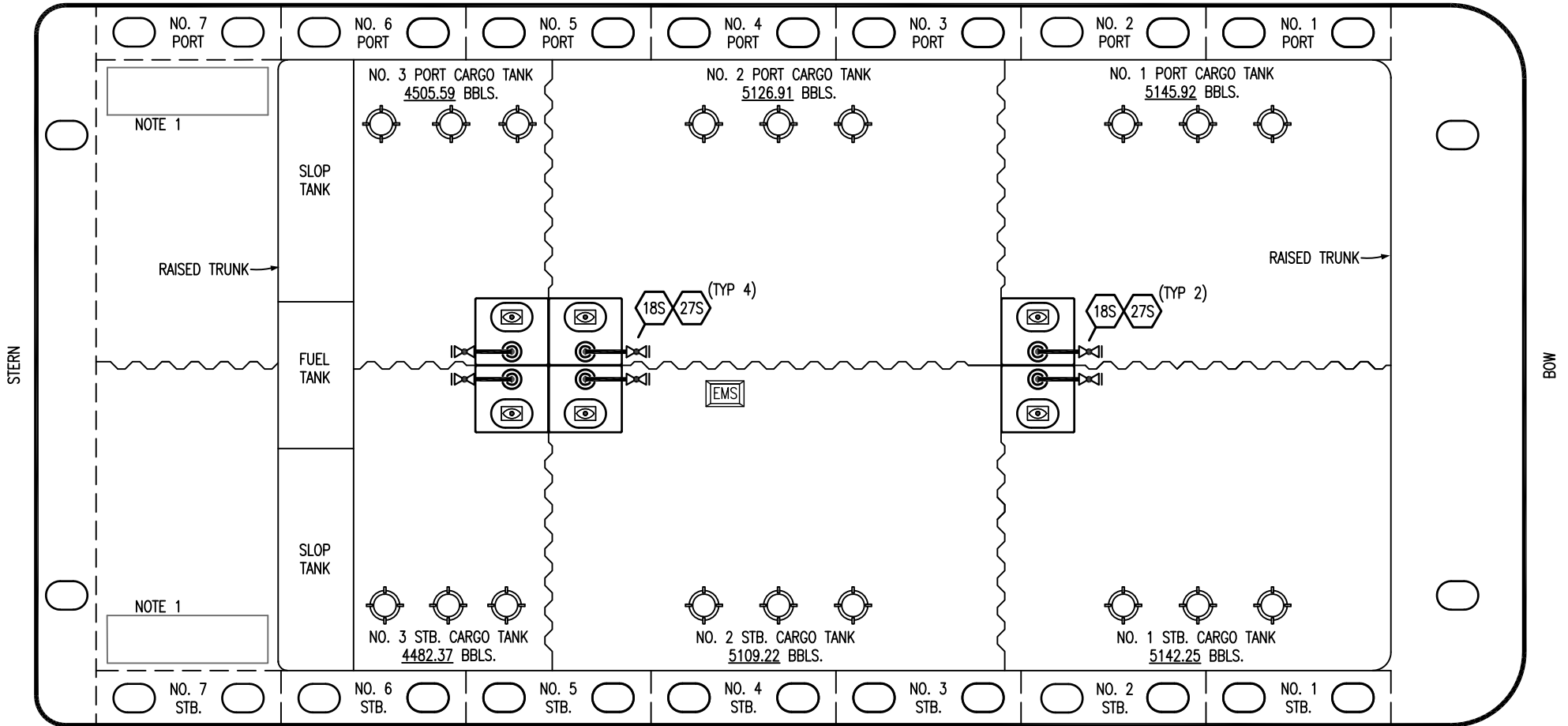
KIRBY INLAND MARINE

VAPOR PIPING FLOW DIAGRAM

KIRBY 29083

SCALE: NONE	REV. 1
PAGE: 2 OF 3	

PORT



STARBOARD

- | | | | |
|-----|----------------------------|-------|--------------------|
| NO | DESCRIPTION | NO | DESCRIPTION |
| 1S | SLOP TANK | 27S | SUMP SUCTION VALVE |
| 18S | TYP. STRIPPING PENETRATION | — | ABOVE DECK PIPING |
| | | - - - | BELOW DECK PIPING |

NOTE 1: CONTAINMENT P/S

CONARD - EX CTCO 253

						KIRBY INLAND MARINE	
						STRIPPING	
						PIPING FLOW DIAGRAM	
0	07/12/23	MRV	DDA	LEP	ISSUED FOR APPROVAL	SCALE: NONE	KIRBY 29083
REV.	DATE	BY	CHK	APP	REVISION DESCRIPTION	PAGE: 3 OF 3	
						REV. 0	