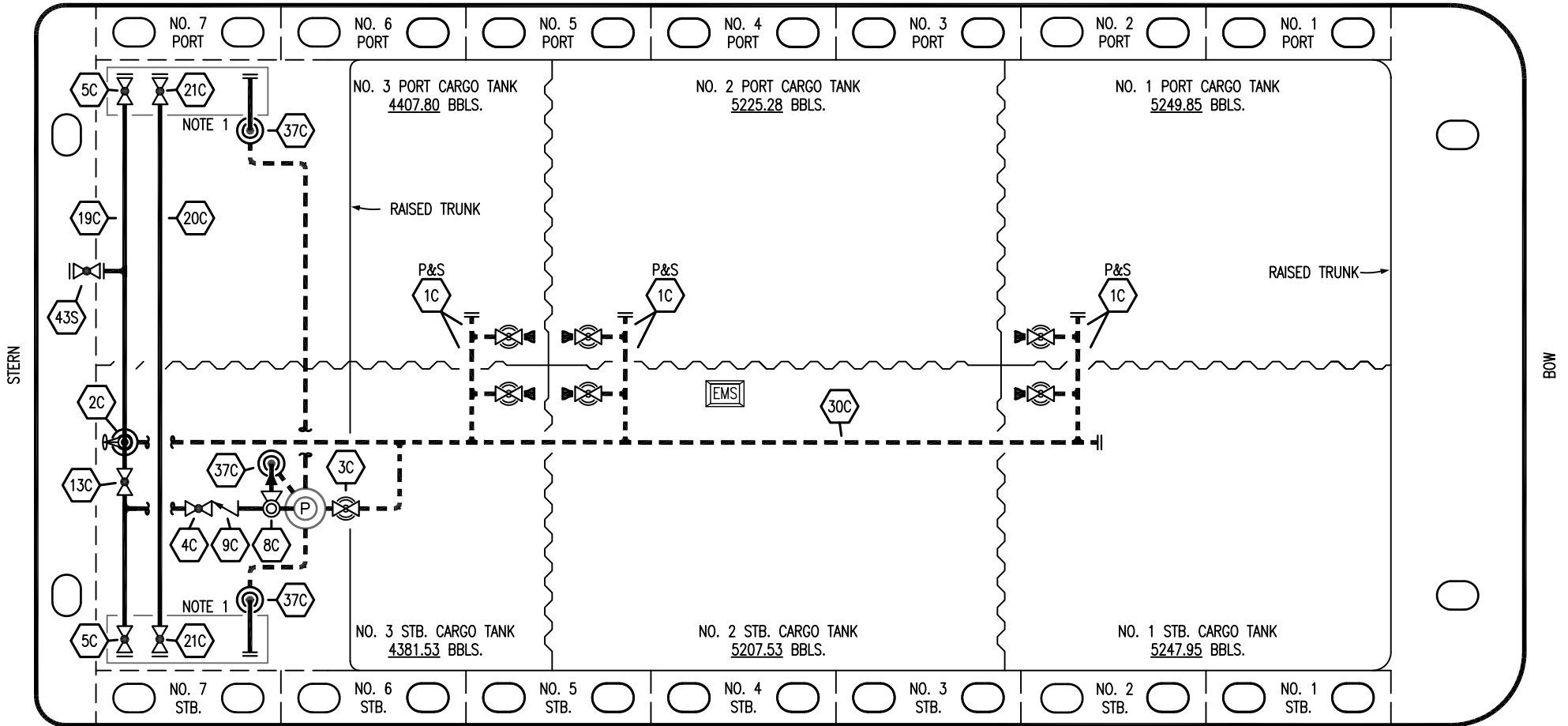


PORT




STARBOARD

NO	DESCRIPTION	NO	DESCRIPTION
1C	CARGO TANK VALVE	19C	CARGO HEADER
2C	LOAD VALVE	20C	DUMMY HEADER PIPING
3C	MASTER SUCTION VALVE	21C	DUMMY HEADER VALVE
4C	DISCHARGE VALVE	30C	CARGO PIPELINE
5C	HEADER VALVE	37C	CARGO DROP
8C	RELIEF VALVE	43S	STERN HEADER VALVE
9C	CHECK VALVE	—	— ABOVE DECK PIPING
13C	CARGO PIPING BLOCK VALVE	---	--- BELOW DECK PIPING

NOTE 1: CONTAINMENT P/S

CONARD -- EX. HBC 307

REV.	DATE	BY	CHK	APP	REVISION DESCRIPTION
1	10/04/23	MRV	DDA	TFB	REVISED PER CLIENT COMMENTS
0	02/20/19	MRV	DDA		ISSUED FOR APPROVAL



**KIRBY INLAND MARINE**

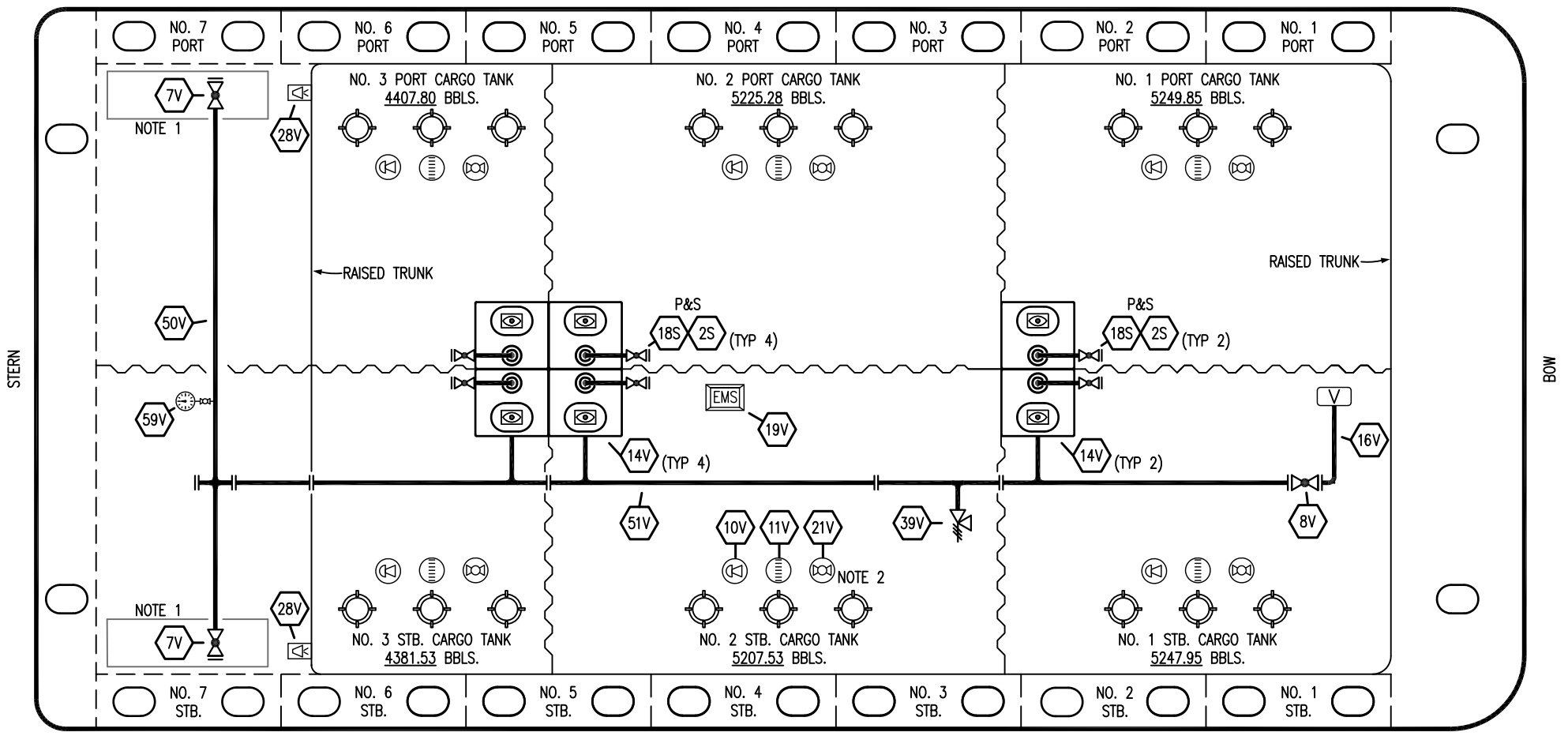
**CARGO**

**PIPING FLOW DIAGRAM**

**KIRBY 29074**

SCALE: NONE	REV. 0
PAGE: 1 OF 2	

PORT



STARBOARD

- |     |                            |     |                          |
|-----|----------------------------|-----|--------------------------|
| NO  | DESCRIPTION                | NO  | DESCRIPTION              |
| 7V  | HEADER VALVE               | 28V | DOCK CONNECTION ALARM    |
| 8V  | VENT STACK VALVE           | 50V | VAPOR HEADER             |
| 10V | HIGH LEVEL/OVERFILL ALARM  | 51V | VAPOR PIPELINE           |
| 11V | 1-METER GAUGE STICK        | 59V | PRESS/VAC GAUGE          |
| 14V | SIGHT GLASS                | 2S  | CARGO SUMP SUCTION VALVE |
| 19V | EMERGENCY ENGINE SHUT DOWN | 18S | STRIPPING DROP           |
| 21V | HERMETIC GAUGE             | —   | ABOVE DECK PIPING        |

NOTE 2: TYPICAL RIGGING IN EACH TANK  
 NOTE 1: CONTAINMENT P/S

CONARD -- EX. HBC 307

REV.	DATE	BY	CHK	APP	REVISION DESCRIPTION
1	10/04/23	MRV	DDA	TFB	REVISED PER CLIENT COMMENTS
0	02/20/19	MRV	DDA		ISSUED FOR APPROVAL

**KIRBY INLAND MARINE**

**VAPOR PIPING FLOW DIAGRAM**

**KIRBY 29074**

SCALE: NONE	REV. 0
PAGE: 2 OF 2	