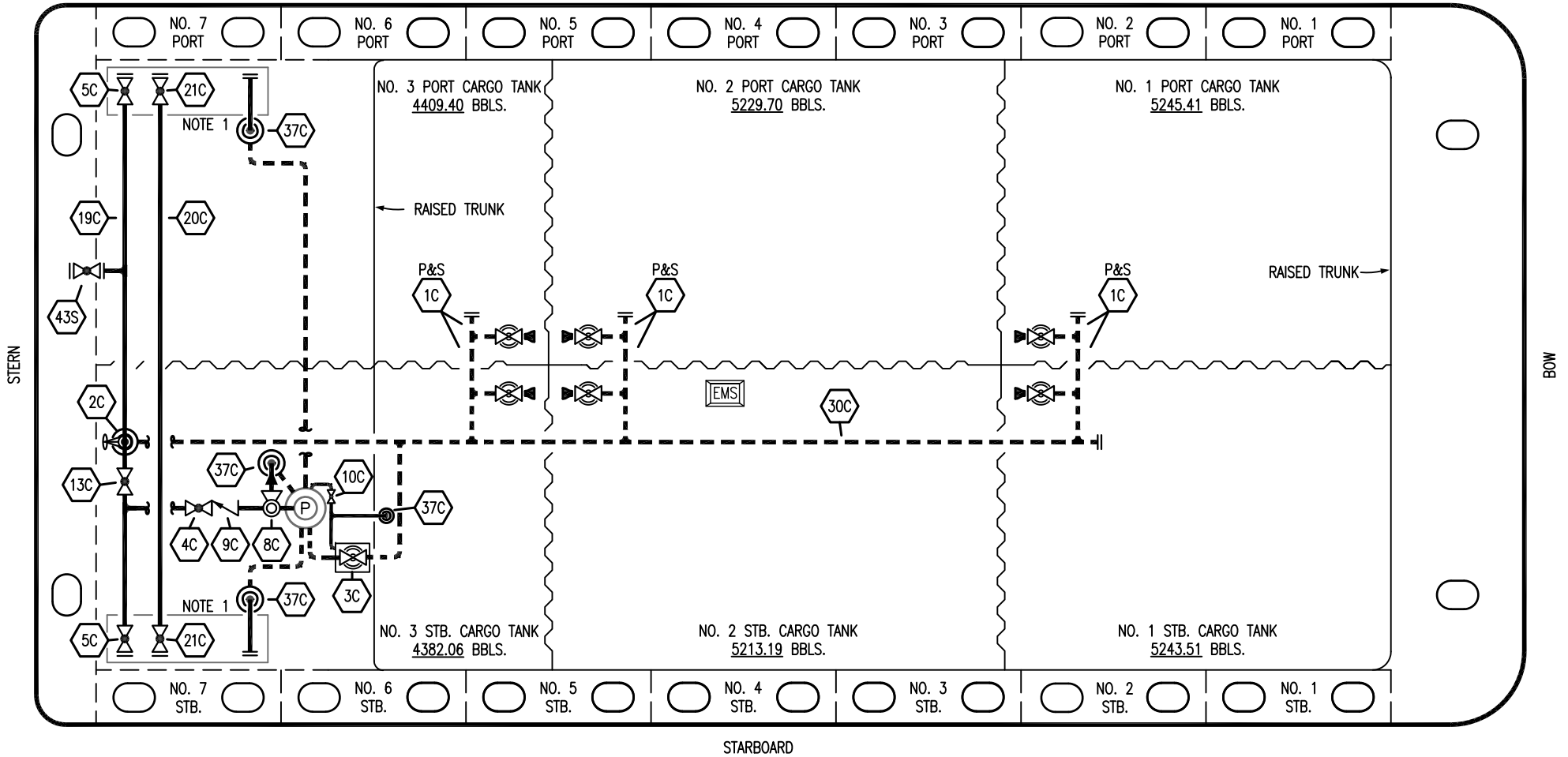


PORT



STARBOARD

NO	DESCRIPTION	NO	DESCRIPTION
1C	CARGO TANK VALVE	19C	CARGO HEADER
2C	LOAD VALVE	20C	DUMMY HEADER PIPING
3C	MASTER SUCTION VALVE	21C	DUMMY HEADER VALVE
4C	DISCHARGE VALVE	30C	CARGO PIPELINE
5C	HEADER VALVE	37C	CARGO DROP
8C	RELIEF VALVE	43S	STERN HEADER VALVE
9C	CHECK VALVE	—	— ABOVE DECK PIPING
10C	BURP VALVE	- - -	- - - BELOW DECK PIPING
13C	CARGO PIPING BLOCK VALVE		

NOTE 1: CONTAINMENT P/S

CONARD -- EX. HBC 305

REV.	DATE	BY	CHK	APP	REVISION DESCRIPTION
1	06/20/23	MRV	DDA	LEP	RENAMED BARGE & REVISED PER CLIENT COMMENTS
0	02/20/19	MRV	DDA		ISSUED FOR APPROVAL

KIRBY INLAND MARINE

CARGO

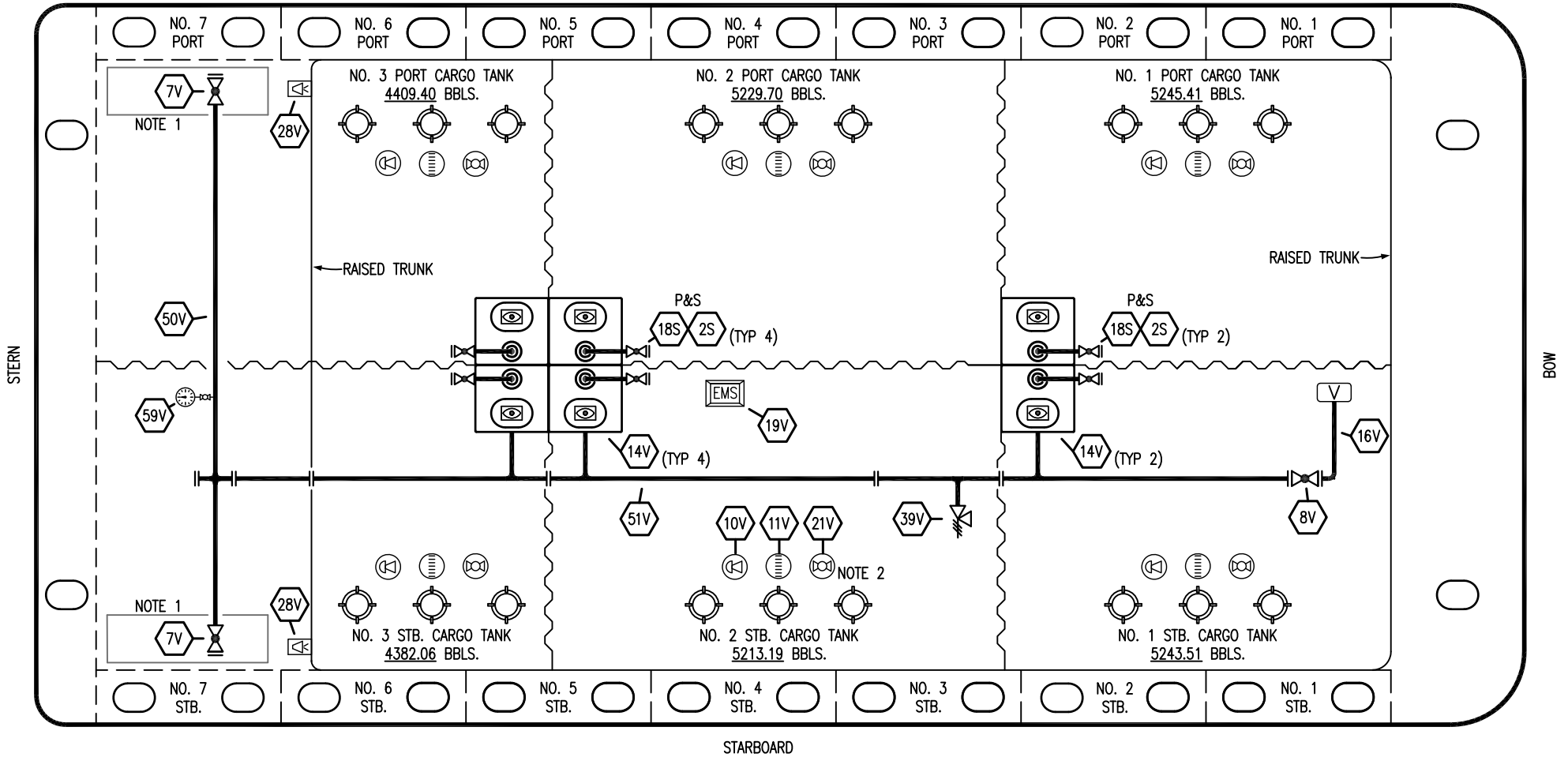
PIPING FLOW DIAGRAM

KIRBY 29072

REV. 1

SCALE: NONE
PAGE: 1 OF 3

PORT



STARBOARD

- | | | | |
|-----|----------------------------|-----|--------------------------|
| NO | DESCRIPTION | NO | DESCRIPTION |
| 7V | HEADER VALVE | 28V | DOCK CONNECTION ALARM |
| 8V | VENT STACK VALVE | 50V | VAPOR HEADER |
| 10V | HIGH LEVEL/OVERFILL ALARM | 51V | VAPOR PIPELINE |
| 11V | 1-METER GAUGE STICK | 59V | PRESS/VAC GAUGE |
| 14V | SIGHT GLASS | 2S | CARGO SUMP SUCTION VALVE |
| 19V | EMERGENCY ENGINE SHUT DOWN | 18S | STRIPPING DROP |
| 21V | HERMETIC GAUGE | — | ABOVE DECK PIPING |

NOTE 2: TYPICAL RIGGING IN EACH TANK

NOTE 1: CONTAINMENT P/S

CONARD -- EX HBC 305

REV.	DATE	BY	CHK	APP	REVISION DESCRIPTION
1	06/20/23	MRV	DDA	LEP	RENAMED BARGE & REVISED PER CLIENT COMMENTS
1	02/20/19	MRV	DDA		ISSUED FOR APPROVAL

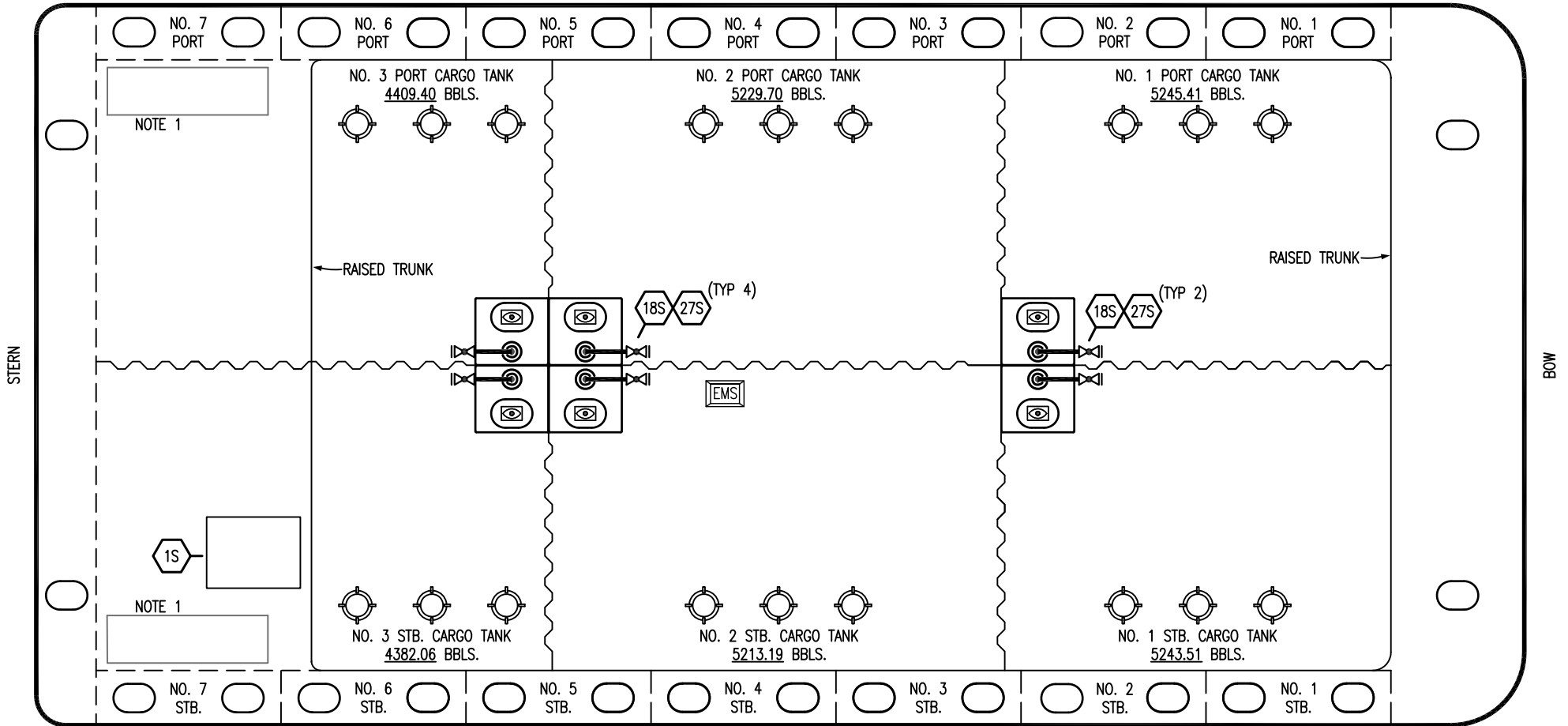
KIRBY INLAND MARINE 

**VAPOR
PIPING FLOW DIAGRAM**

SCALE: NONE
PAGE: 2 OF 3

KIRBY 29072 REV. **0**

PORT



STERN

BOW

STARBOARD

- | | | | |
|-----|----------------------------|-------|--------------------|
| NO | DESCRIPTION | NO | DESCRIPTION |
| 1S | SLOP TANK | 27S | SUMP SUCTION VALVE |
| 18S | TYP. STRIPPING PENETRATION | — | ABOVE DECK PIPING |
| | | - - - | BELOW DECK PIPING |

NOTE 1: CONTAINMENT P/S

CONARD -- EX HBC 305

0	06/20/23	MRV	DDA	LEP	ISSUED FOR APPROVAL
REV.	DATE	BY	CHK	APP	REVISION DESCRIPTION

KIRBY INLAND MARINE

**STRIPPING
PIPING FLOW DIAGRAM**

SCALE: NONE	KIRBY 29072	REV. 0
PAGE: 3 OF 3		