



| NO | DESCRIPTION | NO | DESCRIPTION |
|-----|--------------------------|-------|--|
| 1C | CARGO TANK VALVE | 19C | CARGO HEADER |
| 2C | LOAD VALVE | 20C | DUMMY HEADER PIPING |
| 3C | MASTER SUCTION VALVE | 21C | DUMMY HEADER VALVE |
| 4C | DISCHARGE VALVE | 30C | CARGO PIPELINE |
| 5C | HEADER VALVE | 37C | CARGO DROP  |
| 8C | RELIEF VALVE | 43S | STERN HEADER VALVE |
| 9C | CHECK VALVE | — | — ABOVE DECK PIPING |
| 13C | CARGO PIPING BLOCK VALVE | - - - | BELOW DECK PIPING |

NOTE 1: CONTAINMENT P/S

| REV. | DATE | BY | CHK | APP | REVISION DESCRIPTION |
|------|----------|-----|-----|-----|-----------------------------|
| 1 | 04/27/21 | CJG | DDA | LEP | REVISED PER CLIENT COMMENTS |
| 0 | 02/20/19 | MRV | DDA | | ISSUED FOR APPROVAL |

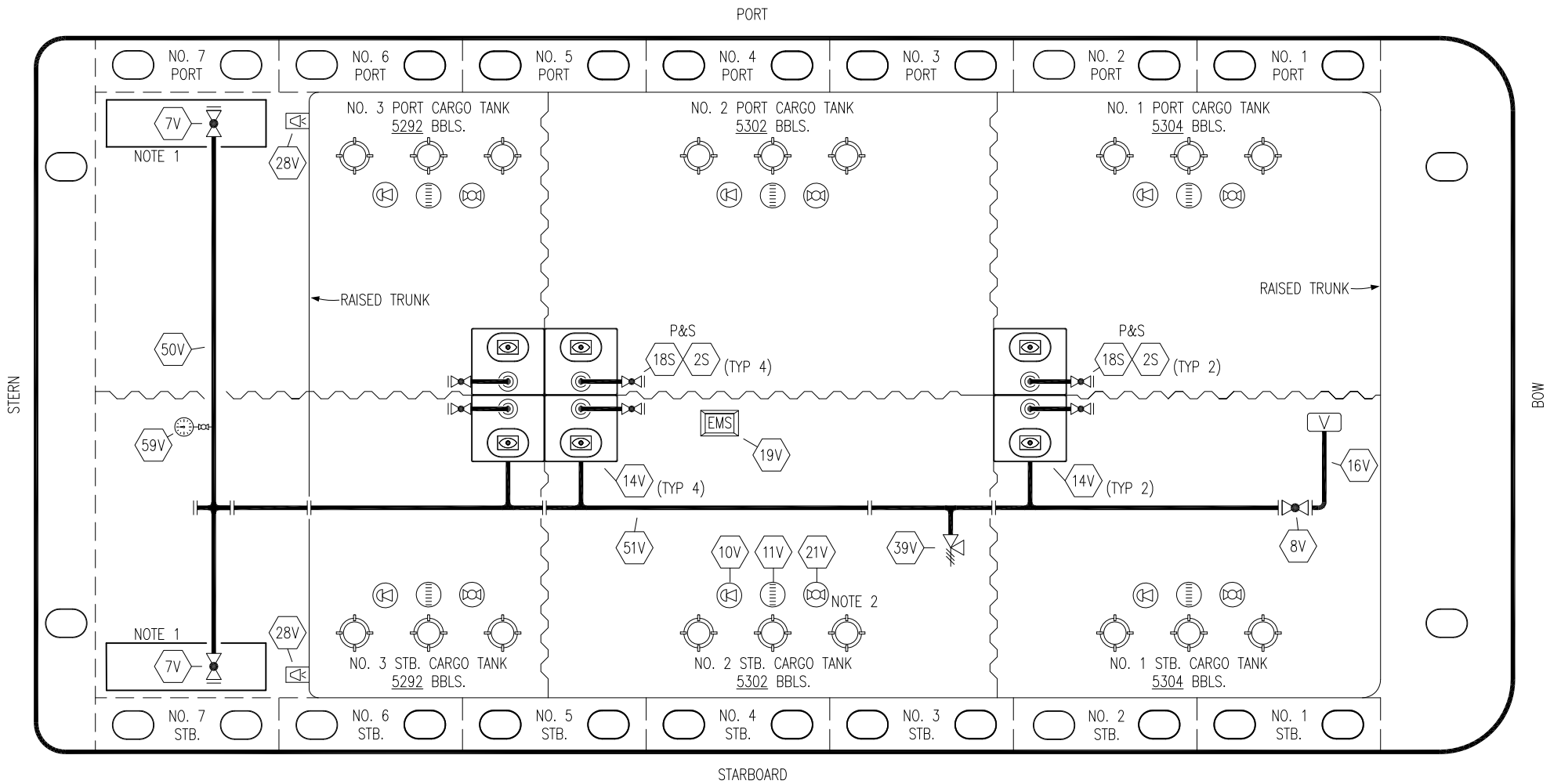
CONARD

KIRBY INLAND MARINE 

CARGO
PIPING FLOW DIAGRAM

KIRBY 29069

| | |
|--------------|--------|
| SCALE: NONE | REV. 1 |
| PAGE: 1 OF 2 | |



| NO | DESCRIPTION | NO | DESCRIPTION |
|-----|----------------------------|-----|--------------------------|
| 7V | HEADER VALVE | 28V | DOCK CONNECTION ALARM |
| 8V | VENT STACK VALVE | 50V | VAPOR HEADER |
| 10V | HIGH LEVEL/OVERFILL ALARM | 51V | VAPOR PIPELINE |
| 11V | 1-METER GAUGE STICK | 59V | PRESS/VAC GAUGE |
| 14V | SIGHT GLASS | 2S | CARGO SUMP SUCTION VALVE |
| 19V | EMERGENCY ENGINE SHUT DOWN | 18S | STRIPPING DROP |
| 21V | HERMETIC GAUGE | — | ABOVE DECK PIPING |

NOTE 2: TYPICAL RIGGING IN EACH TANK

NOTE 1: CONTAINMENT P/S

| REV. | DATE | BY | CHK | APP | REVISION DESCRIPTION |
|------|----------|-----|-----|-----|----------------------|
| 1 | 04/27/21 | CJG | DDA | LEP | REVISED BARGE NAME |
| 0 | 02/20/19 | MRV | DDA | | ISSUED FOR APPROVAL |

CONARD

KIRBY INLAND MARINE

**VAPOR
PIPING FLOW DIAGRAM**

| | |
|--------------------|---------------|
| KIRBY 29069 | REV. 1 |
| SCALE: NONE | PAGE: 2 OF 2 |