


NO	DESCRIPTION	NO	DESCRIPTION
1C	CARGO TANK VALVE	19C	CARGO HEADER
2C	LOAD VALVE	21C	DUMMY HEADER VALVE
3C	MASTER SUCTION VALVE	30C	CARGO PIPELINE
4C	DISCHARGE VALVE	37C	CARGO DROP
5C	HEADER VALVE	43S	STERN HEADER VALVE
8C	RELIEF VALVE	—	— ABOVE DECK PIPING
9C	CHECK VALVE	---	--- BELOW DECK PIPING
13C	CARGO PIPING BLOCK VALVE		

NOTE 1: CONTAINMENT P/S

EX. CONARD HBC 301

REV.	DATE	BY	CHK	APP	REVISION DESCRIPTION
2	08/26/22	MRV	DDA	JLF	REVISED PER CLIENT COMMENTS
1	10/28/21	MRV	DDA	WHI	REVISED PER CLIENT COMMENTS
0	02/28/19	MRV	DDA		ISSUED FOR APPROVAL



KIRBY INLAND MARINE

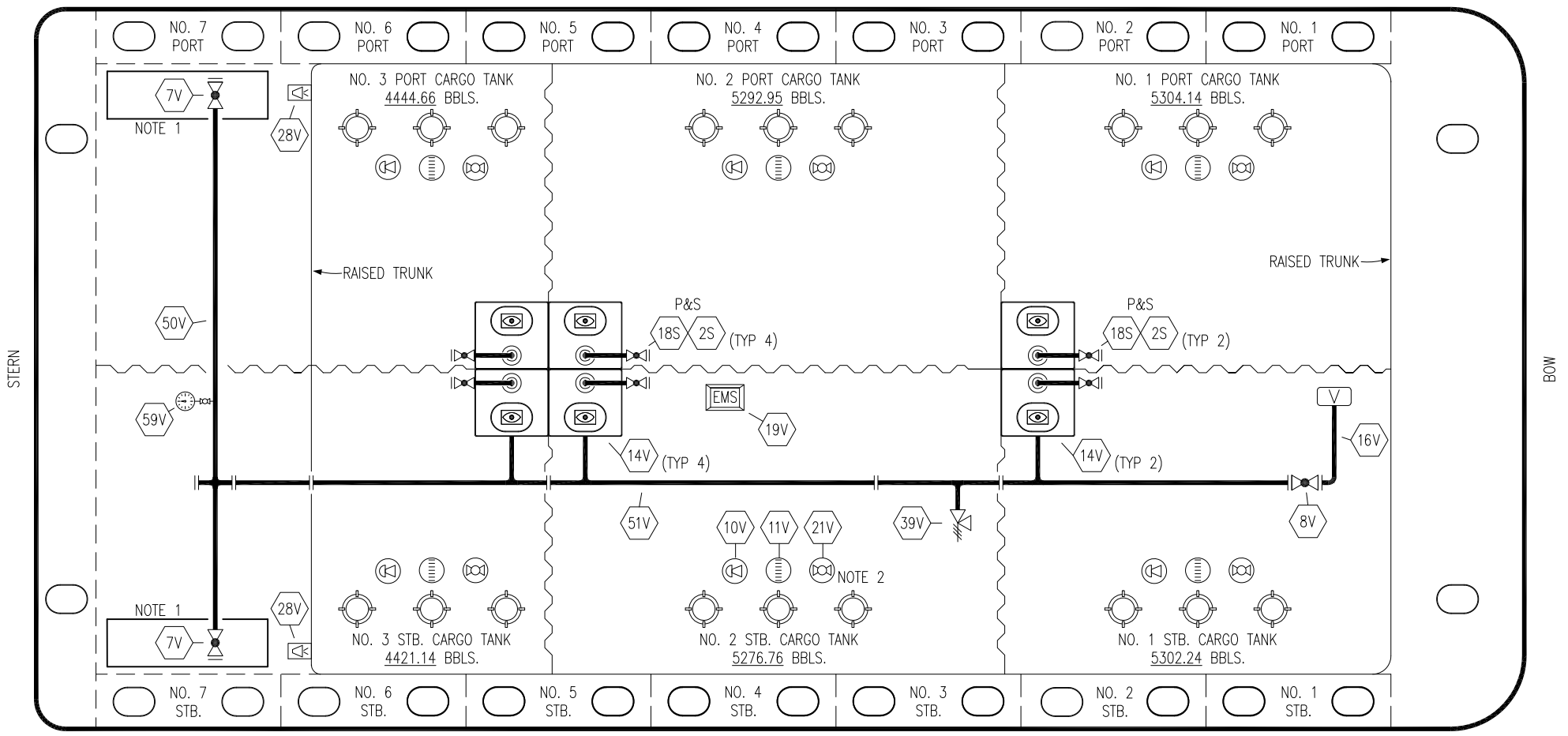
CARGO

PIPING FLOW DIAGRAM

KIRBY 29068

SCALE: NONE	REV. 2
PAGE: 1 OF 2	

PORT



STARBOARD

NO	DESCRIPTION	NO	DESCRIPTION
7V	HEADER VALVE	28V	DOCK CONNECTION ALARM
8V	VENT STACK VALVE	50V	VAPOR HEADER
10V	HIGH LEVEL/OVERFILL ALARM	51V	VAPOR PIPELINE
11V	1-METER GAUGE STICK	59V	PRESS/VAC GAUGE
14V	SIGHT GLASS	2S	CARGO SUMP SUCTION VALVE
19V	EMERGENCY ENGINE SHUT DOWN	18S	STRIPPING DROP
21V	HERMETIC GAUGE	—	ABOVE DECK PIPING

NOTE 2: TYPICAL RIGGING IN EACH TANK
 NOTE 1: CONTAINMENT P/S

EX. CONARD HBC 301

REV.	DATE	BY	CHK	APP	REVISION DESCRIPTION
2	08/26/22	MRV	DDA	JLF	REVISED PER CLIENT COMMENTS
1	10/28/21	MRV	DDA	WHI	REVISED PER CLIENT COMMENTS
0	02/18/19	MRV	DDA		ISSUED FOR APPROVAL

KIRBY INLAND MARINE

VAPOR PIPING FLOW DIAGRAM

KIRBY 29068

SCALE: NONE	REV. 2
PAGE: 2 OF 2	