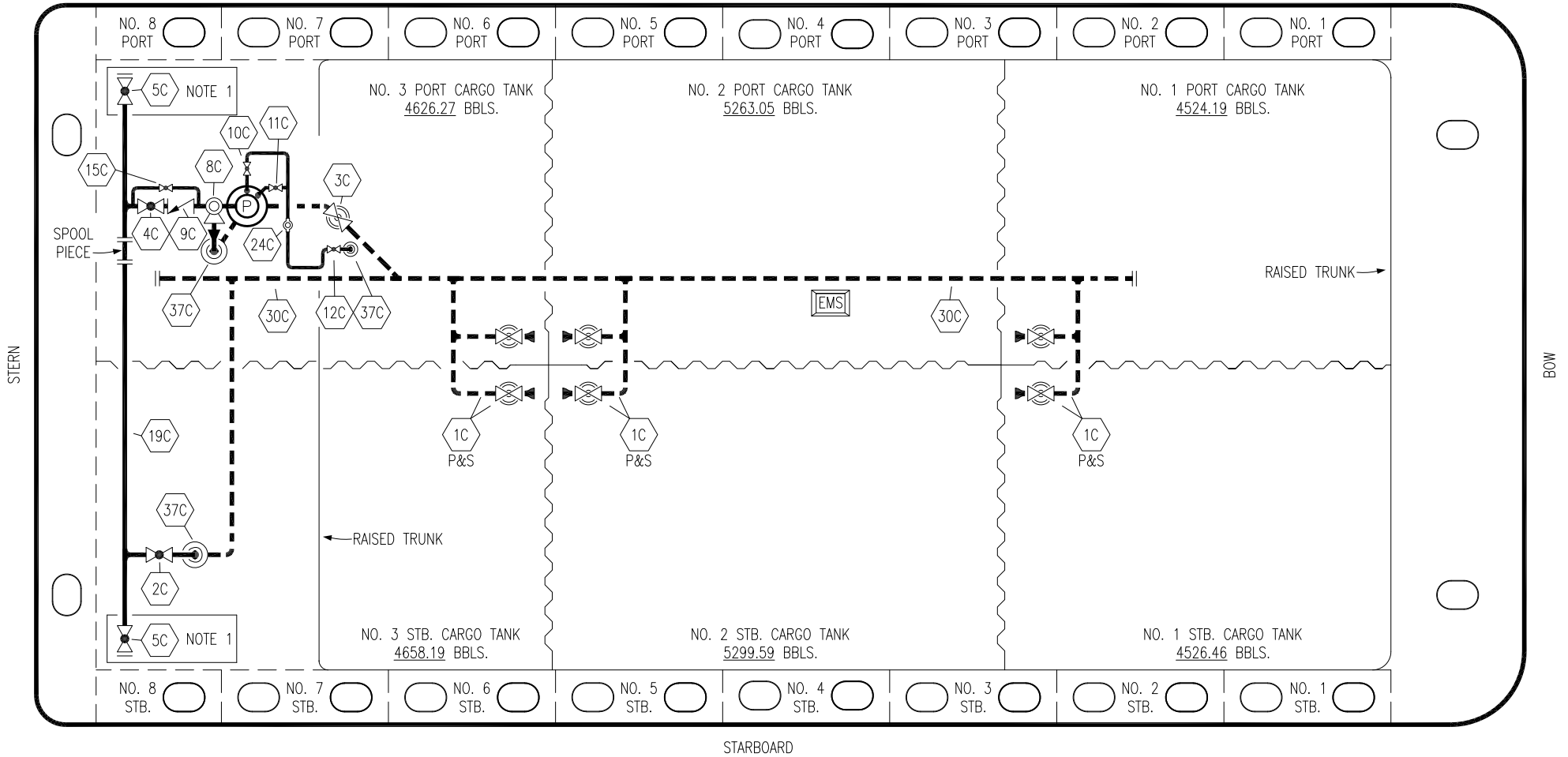


PORT



- | | | | |
|-----|--------------------------|-------|---------------------------------|
| NO | DESCRIPTION | NO | DESCRIPTION |
| 1C | CARGO TANK VALVE | 12C | BURP VALVE RETURN TO CARGO TANK |
| 2C | LOAD VALVE | 15C | BYPASS VALVE AROUND CHECK |
| 3C | 12" MASTER SUCTION VALVE | 19C | CARGO HEADER |
| 4C | DISCHARGE VALVE | 24C | FLOW INDICATOR |
| 5C | HEADER VALVE | 30C | 10" CARGO PIPELINE |
| 8C | RELIEF VALVE | 37C | CARGO DROP |
| 9C | CHECK VALVE | — | — ABOVE DECK PIPING |
| 10C | BURP VALVE | - - - | - - - BELOW DECK PIPING |
| 11C | BLEED OFF VALVE | | |

NOTE 1: CONTAINMENT P/S

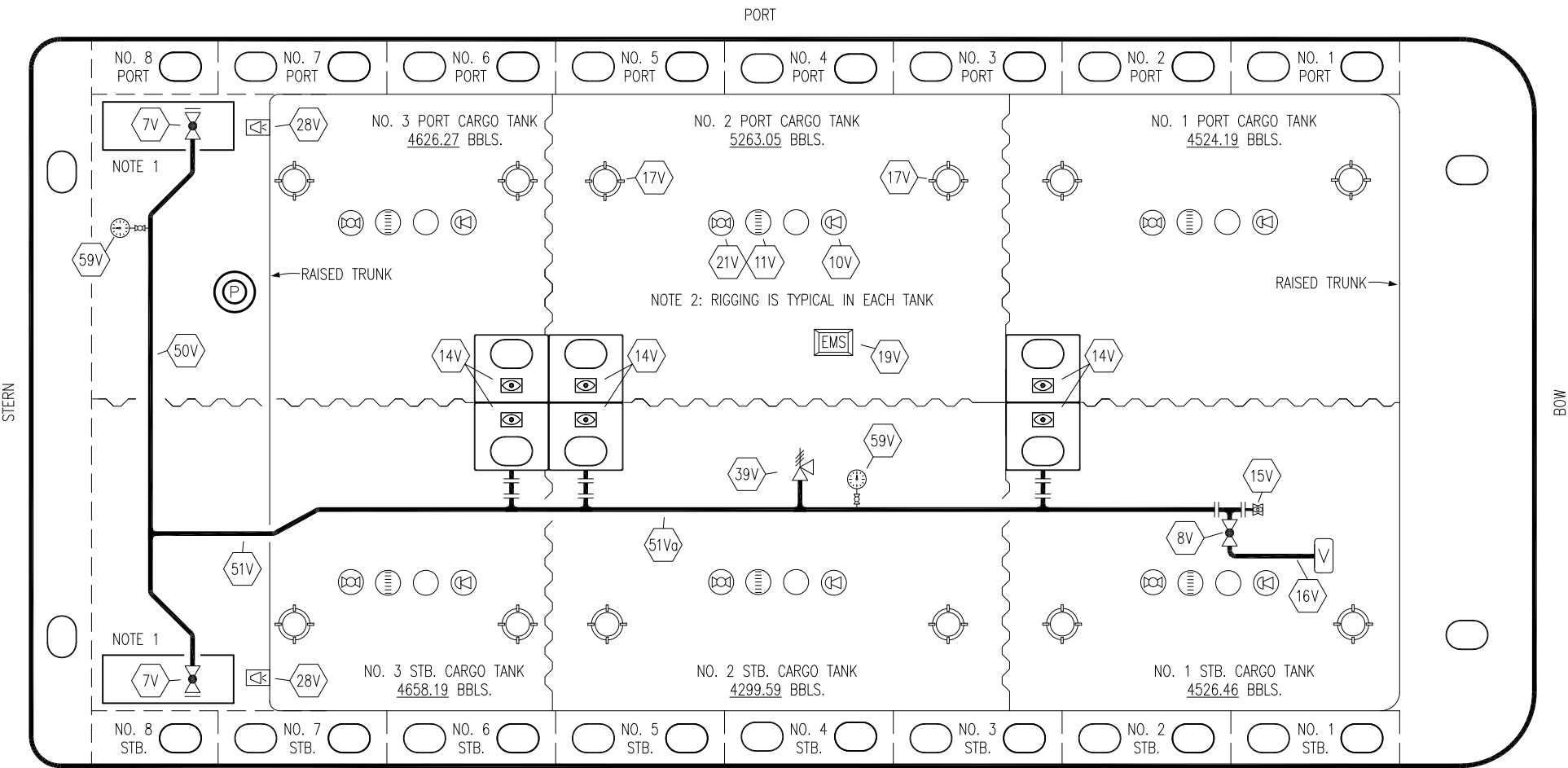
WEST GULF MARINE INC.

1	10/10/22	MRV	DDA	DL	REVISED PER CLIENT COMMENTS
0	04/24/17	WFB	DDA		ISSUED FOR APPROVAL
REV.	DATE	BY	CHK	APP	REVISION DESCRIPTION

KIRBY INLAND MARINE

**CARGO
PIPING FLOW DIAGRAM**

SCALE: NONE	KIRBY 29065	REV. 1
PAGE: 1 OF 3		



STARBOARD

NO	DESCRIPTION	NO	DESCRIPTION
7V	8" HEADER VALVE	21V	2" HERMETIC GAUGE
8V	8" VENT STACK VALVE	28V	DOCK CONNECTION ALARM
10V	8" HIGH LEVEL/OVERFILL ALARM	39V	PRESS/VAC RELIEF VALVE
11V	8" 1-METER STICK GAUGE	50V	8" VAPOR HEADER
14V	8" SIGHT GLASS W/GAUGE TREE	51V	8" VAPOR PIPELINE
15V	INSPECTION PORT	51Va	10" VAPOR PIPELINE
16V	8" VAPOR VENT STACK	59V	PRESS/VAC GAUGE
17V	20" BUTTERWORTH	—	ABOVE DECK PIPING
19V	EMERGENCY ENGINE SHUT DOWN		

NOTE 1: CONTAINMENT P/S
NOTE 2: RIGGING IS TYPICAL IN EACH TANK

WEST GULF MARINE INC.

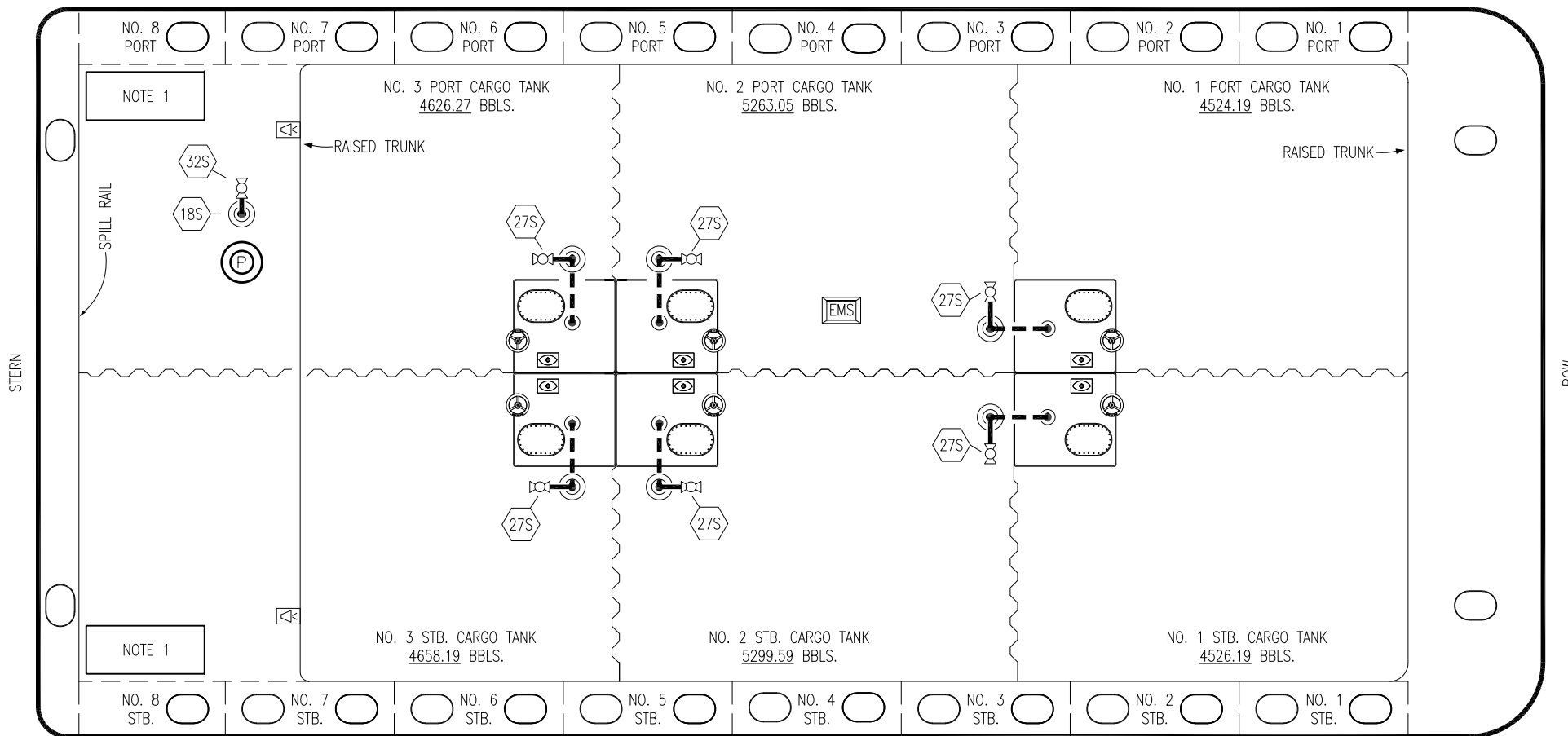
REV.	DATE	BY	CHK	APP	REVISION DESCRIPTION
1	10/10/22	MRV	DDA	DL	REVISED PER CLIENT COMMENTS
0	04/24/17	WFB	DDA		ISSUED FOR APPROVAL

KIRBY INLAND MARINE

VAPOR
PIPING FLOW DIAGRAM

SCALE: NONE	KIRBY 29065
PAGE: 2 OF 3	REV. 1

PORT



NOTE 1

NOTE 1

- NO DESCRIPTION
- 18S TYP. STRIPPING DROP (18S symbol)
- 27S SUMP SUCTION VALVE (27S symbol)
- 32S PUMP WELL PRIMER VALVE (32S symbol)
- ABOVE DECK PIPING
- - - BELOW DECK PIPING

STARBOARD

NOTE 1: CONTAINMENT P/S

WEST GULF MARINE INC.

REV.	DATE	BY	CHK	APP	REVISION DESCRIPTION
1	10/10/22	MRV	DDA	DL	REVISED PER CLIENT COMMENTS
0	04/24/17	WFB	DDA		ISSUED FOR APPROVAL

KIRBY INLAND MARINE 

**STRIPPING
PIPING FLOW DIAGRAM**

SCALE: NONE
PAGE: 3 OF 3

KIRBY 29065

REV. **1**