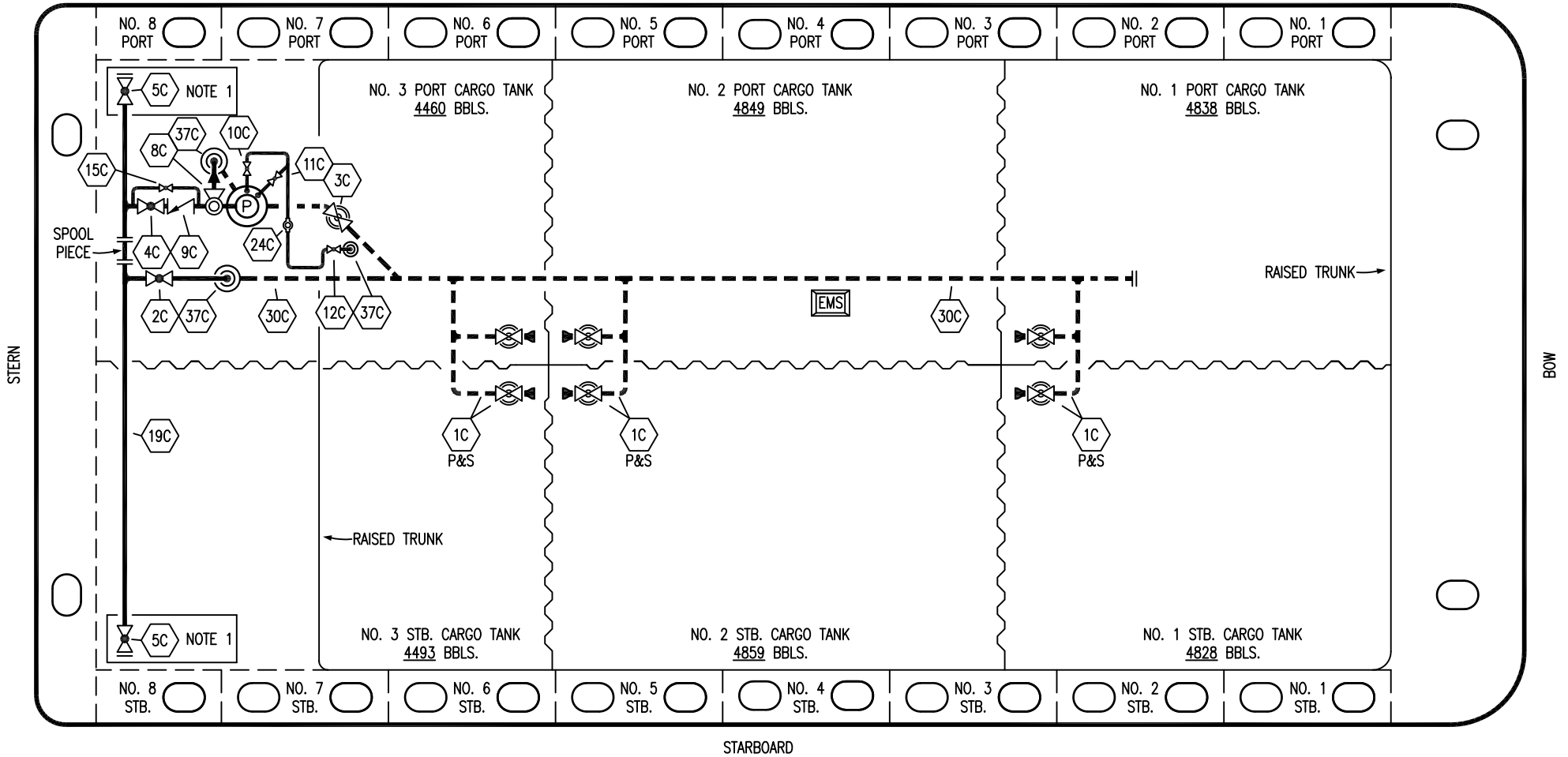


PORT



- |     |                      |
|-----|----------------------|
| NO  | DESCRIPTION          |
| 1C  | CARGO TANK VALVE     |
| 2C  | LOAD VALVE           |
| 3C  | MASTER SUCTION VALVE |
| 4C  | DISCHARGE VALVE      |
| 5C  | HEADER VALVE         |
| 8C  | RELIEF VALVE         |
| 9C  | CHECK VALVE          |
| 10C | BURP VALVE           |
| 11C | BLEED OFF VALVE      |

- |       |                                 |
|-------|---------------------------------|
| NO    | DESCRIPTION                     |
| 12C   | BURP VALVE RETURN TO CARGO TANK |
| 15C   | BYPASS VALVE AROUND CHECK       |
| 19C   | CARGO HEADER                    |
| 24C   | FLOW INDICATOR                  |
| 30C   | CARGO PIPELINE                  |
| 37C   | CARGO DROP                      |
| —     | ABOVE DECK PIPING               |
| - - - | BELOW DECK PIPING               |

NOTE 1: CONTAINMENT P/S

WEST GULF MARINE INC.

0	04/24/17	WFB	DDA	ISSUED FOR APPROVAL
REV.	DATE	BY	CHK	APP
				REVISION DESCRIPTION

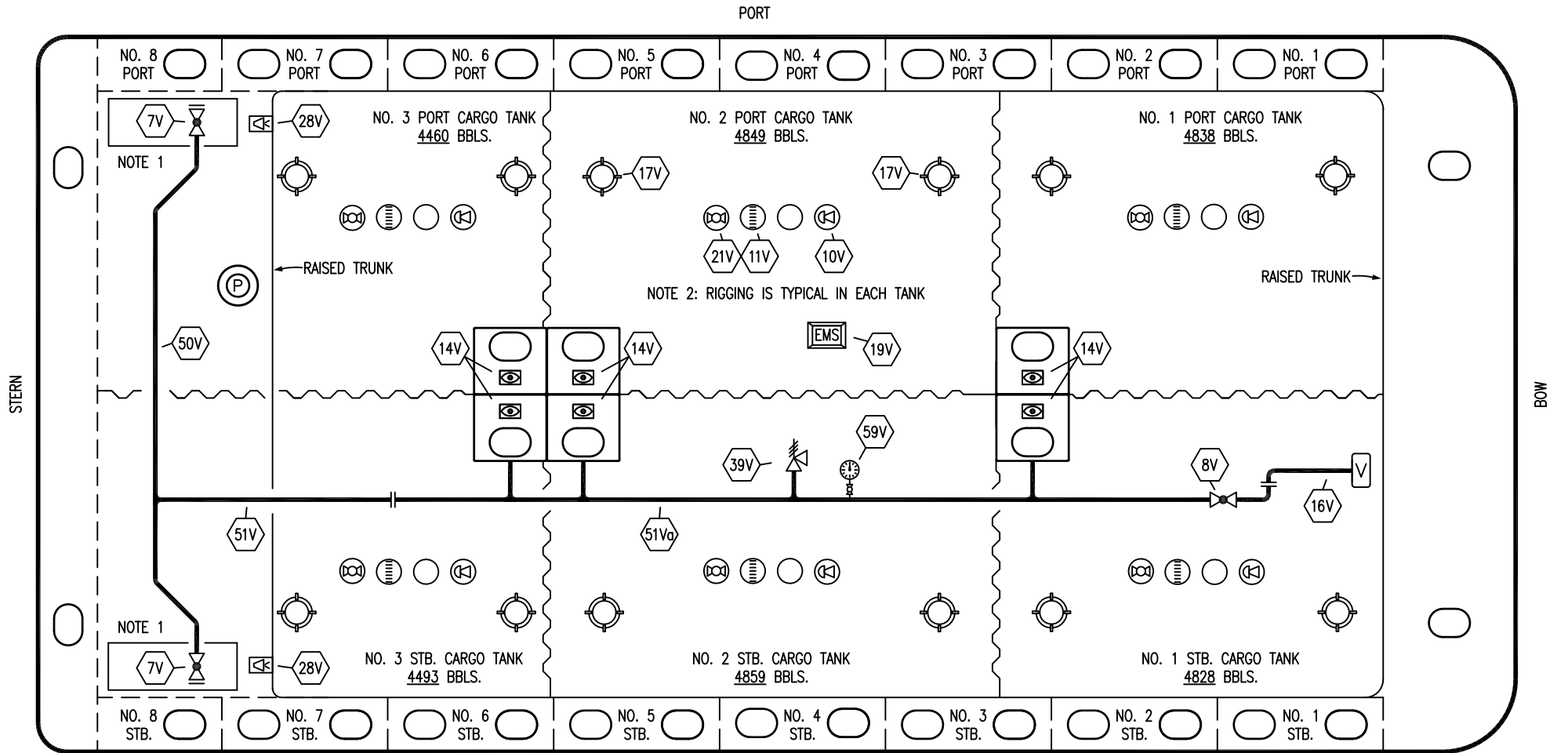
**KIRBY INLAND MARINE** 

**CARGO  
PIPING FLOW DIAGRAM**

SCALE: NONE  
PAGE: 1 OF 3

**KIRBY 29064**

REV. **0**



NO	DESCRIPTION	NO	DESCRIPTION
7V	8" HEADER VALVE	21V	2" HERMETIC GAUGE
8V	8" VENT STACK VALVE	28V	DOCK CONNECTION ALARM
10V	8" HIGH LEVEL/OVERFILL ALARM	39V	PRESS/VAC RELIEF VALVE
11V	8" 1-METER STICK GAUGE	50V	8" VAPOR HEADER
14V	8" SIGHT GLASS W/GAUGE TREE	51V	8" VAPOR PIPELINE
16V	8" VAPOR VENT STACK	51Va	10" VAPOR PIPELINE
17V	20" BUTTERWORTH	59V	PRESS/VAC GAUGE
19V	EMERGENCY ENGINE SHUT DOWN	—	ABOVE DECK PIPING

NOTE 1: CONTAINMENT P/S  
NOTE 2: RIGGING IS TYPICAL IN EACH TANK

WEST GULF MARINE INC.

**KIRBY INLAND MARINE** 

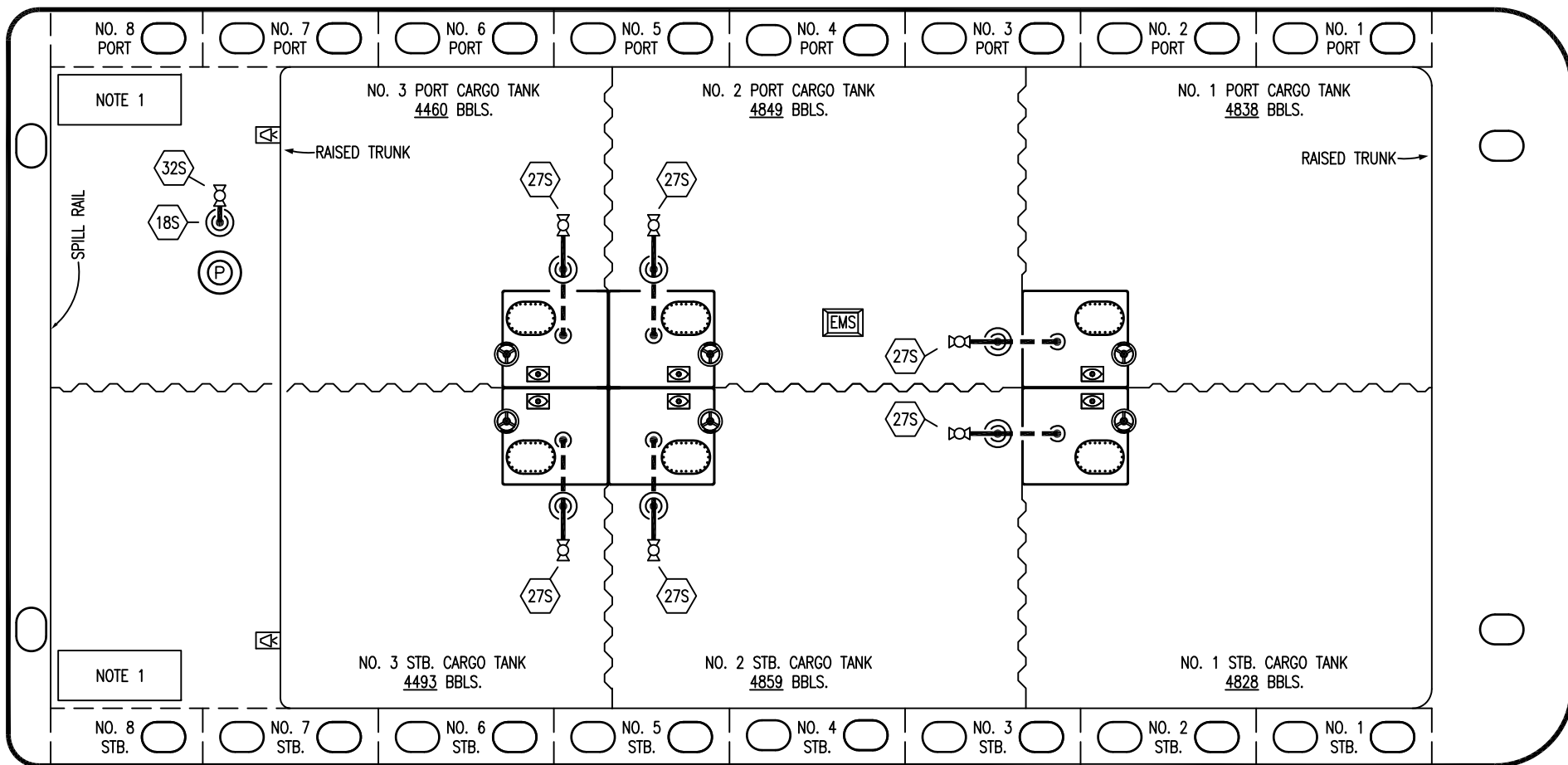
**VAPOR  
PIPING FLOW DIAGRAM**

0	04/24/17	WFB	DDA	ISSUED FOR APPROVAL
REV.	DATE	BY	CHK	APP
				REVISION DESCRIPTION

SCALE: NONE  
PAGE: 2 OF 3

**KIRBY 29064** REV. **0**

PORT



- | NO                      | DESCRIPTION            |
|-------------------------|------------------------|
| 18S                     | TYP. STRIPPING DROP    |
| 27S                     | SUMP SUCTION VALVE     |
| 32S                     | PUMP WELL PRIMER VALVE |
| — ABOVE DECK PIPING     |                        |
| - - - BELOW DECK PIPING |                        |

NOTE 1: CONTAINMENT P/S

WEST GULF MARINE INC.

						<b>KIRBY INLAND MARINE</b>	
						<b>STRIPPING PIPING FLOW DIAGRAM</b>	
0	04/24/17	WFB	DDA		ISSUED FOR APPROVAL	SCALE: NONE	<b>KIRBY 29064</b>
REV.	DATE	BY	CHK	APP	REVISION DESCRIPTION	PAGE: 3 OF 3	