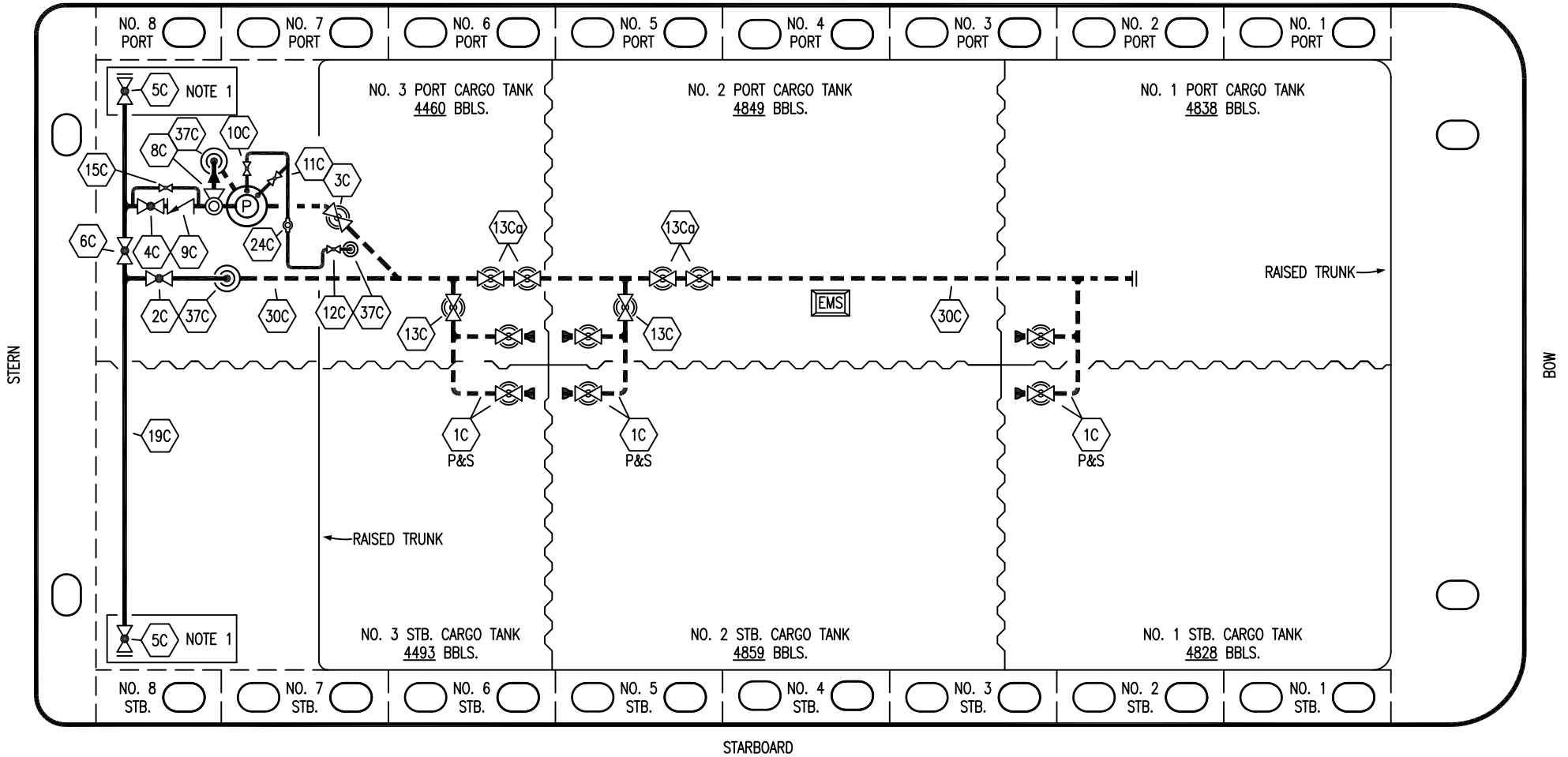


PORT




STARBOARD

- |     |                      |       |                                 |
|-----|----------------------|-------|---------------------------------|
| NO  | DESCRIPTION          | NO    | DESCRIPTION                     |
| 1C  | CARGO TANK VALVE     | 12C   | BURP VALVE RETURN TO CARGO TANK |
| 2C  | LOAD VALVE           | 13C   | 10" CARGO PIPING BLOCK VALVE    |
| 3C  | MASTER SUCTION VALVE | 13Ca  | 12" CARGO PIPING BLOCK VALVE    |
| 4C  | DISCHARGE VALVE      | 15C   | BYPASS VALVE AROUND CHECK       |
| 5C  | HEADER VALVE         | 19C   | CARGO HEADER                    |
| 6C  | SALVAGE VALVE        | 24C   | FLOW INDICATOR                  |
| 8C  | RELIEF VALVE         | 30C   | CARGO PIPELINE                  |
| 9C  | CHECK VALVE          | 37C   | CARGO DROP                      |
| 10C | BURP VALVE           | —     | — ABOVE DECK PIPING             |
| 11C | BLEED OFF VALVE      | - - - | - - - BELOW DECK PIPING         |

NOTE 1: CONTAINMENT P/S

WEST GULF MARINE INC.

REV.	DATE	BY	CHK	APP	REVISION DESCRIPTION
1	10/24/16	WFB	DDA		REVISED PER CLIENT COMMENTS
0	03/21/16	WFB	DDA		ISSUED FOR APPROVAL



**KIRBY INLAND MARINE**

**CARGO**

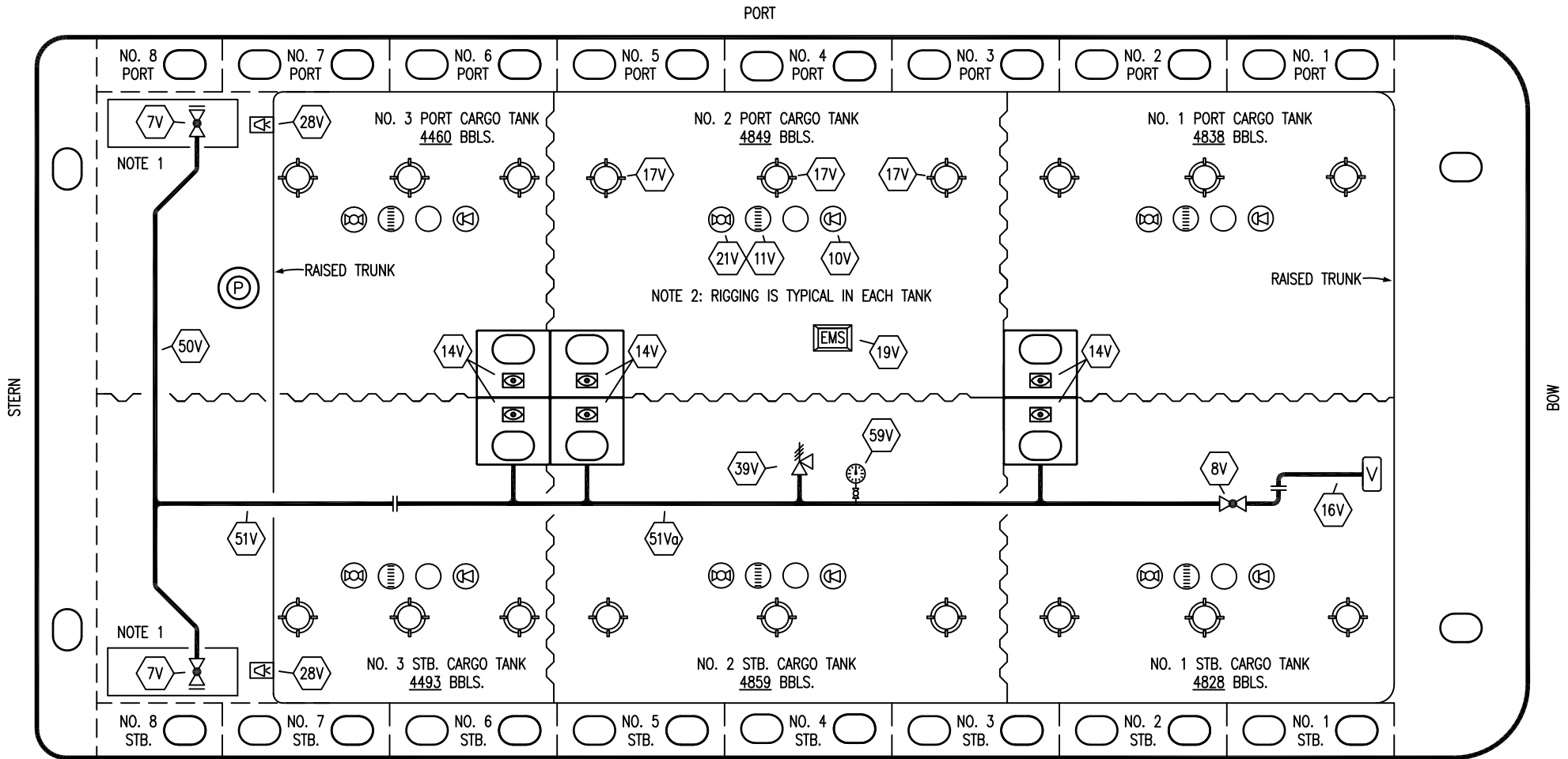
**PIPING FLOW DIAGRAM**

**KIRBY 29063**

SCALE: NONE

PAGE: 1 OF 3

REV. **1**



NO	DESCRIPTION	NO	DESCRIPTION
7V	8" HEADER VALVE	21V	2" HERMETIC GAUGE
8V	8" VENT STACK VALVE	28V	DOCK CONNECTION ALARM
10V	8" HIGH LEVEL/OVERFILL ALARM	39V	PRESS/VAC RELIEF VALVE
11V	8" 1-METER STICK GAUGE	50V	8" VAPOR HEADER
14V	8" SIGHT GLASS W/GAUGE TREE	51V	8" VAPOR PIPELINE
16V	8" VAPOR VENT STACK	51Va	10" VAPOR PIPELINE
17V	20" BUTTERWORTH	59V	PRESS/VAC GAUGE
19V	EMERGENCY ENGINE SHUT DOWN	—	ABOVE DECK PIPING

NOTE 1: CONTAINMENT P/S  
 NOTE 2: RIGGING IS TYPICAL IN EACH TANK

WEST GULF MARINE INC.

REV.	DATE	BY	CHK	APP	REVISION DESCRIPTION
1	10/24/16	WFB	DDA		REVISED PER CLIENT COMMENTS
0	03/21/16	WFB	DDA		ISSUED FOR APPROVAL

KIRBY INLAND MARINE

VAPOR  
PIPING FLOW DIAGRAM

SCALE: NONE	KIRBY 29063	PAGE: 2 OF 3
		REV. 1

PORT

NO. 8 PORT

NO. 7 PORT

NO. 6 PORT

NO. 5 PORT

NO. 4 PORT

NO. 3 PORT

NO. 2 PORT

NO. 1 PORT

NOTE 1

NO. 3 PORT CARGO TANK  
4460 BBLs.

NO. 2 PORT CARGO TANK  
4849 BBLs.

NO. 1 PORT CARGO TANK  
4838 BBLs.

← RAISED TRUNK

RAISED TRUNK →

SPILL RAIL

32S

18S

P

27S

27S

EMS

27S

27S

27S

27S

NO. 3 STB. CARGO TANK  
4493 BBLs.

NO. 2 STB. CARGO TANK  
4859 BBLs.

NO. 1 STB. CARGO TANK  
4828 BBLs.

NOTE 1

NO. 8 STB.

NO. 7 STB.

NO. 6 STB.

NO. 5 STB.

NO. 4 STB.

NO. 3 STB.

NO. 2 STB.

NO. 1 STB.

STARBOARD

STERN

BOW

- NO DESCRIPTION
- 18S TYP. STRIPPING DROP
- 27S SUMP SUCTION VALVE
- 32S PUMP WELL PRIMER VALVE

- ABOVE DECK PIPING
- - - BELOW DECK PIPING

NOTE 1: CONTAINMENT P/S

WEST GULF MARINE INC.

KIRBY INLAND MARINE 

### STRIPPING PIPING FLOW DIAGRAM

0	03/21/16	WFB	DDA		ISSUED FOR APPROVAL
REV.	DATE	BY	CHK	APP	REVISION DESCRIPTION

SCALE: NONE

PAGE: 3 OF 3

# KIRBY 29063

REV. **0**