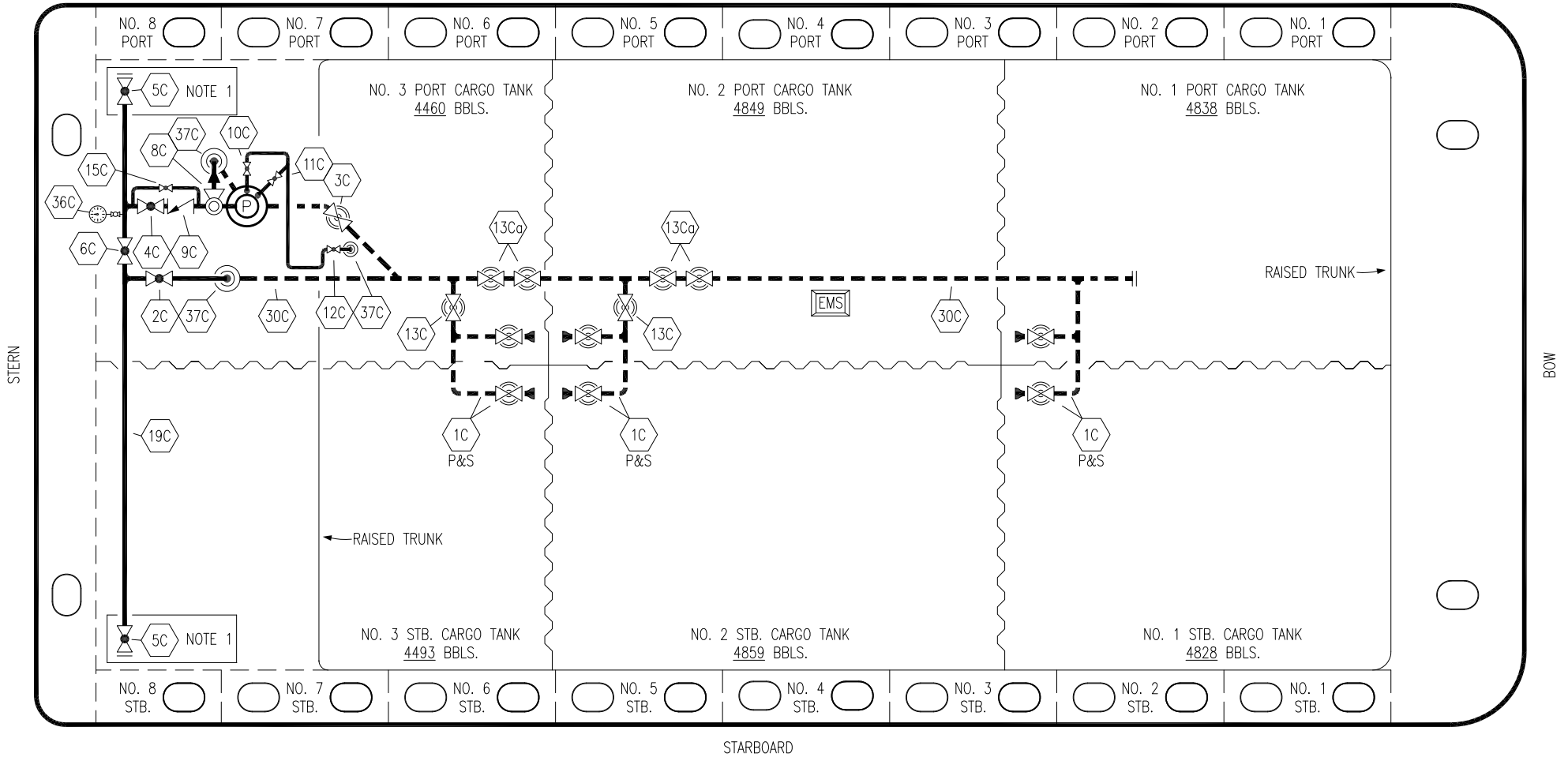


PORT



STERN

BOW

STARBOARD

- | | | | |
|-----|----------------------|-------|---------------------------------|
| NO | DESCRIPTION | NO | DESCRIPTION |
| 1C | CARGO TANK VALVE | 12C | BURP VALVE RETURN TO CARGO TANK |
| 2C | LOAD VALVE | 13C | 10" CARGO PIPING BLOCK VALVE |
| 3C | MASTER SUCTION VALVE | 13Ca | 12" CARGO PIPING BLOCK VALVE |
| 4C | DISCHARGE VALVE | 15C | BYPASS VALVE AROUND CHECK |
| 5C | HEADER VALVE | 19C | CARGO HEADER |
| 6C | SALVAGE VALVE | 30C | CARGO PIPELINE |
| 8C | RELIEF VALVE | 36C | PRESSURE GAUGE |
| 9C | CHECK VALVE | 37C | CARGO DROP |
| 10C | BURP VALVE | — | — ABOVE DECK PIPING |
| 11C | BLEED OFF VALVE | - - - | - - - BELOW DECK PIPING |

NOTE 1: CONTAINMENT P/S

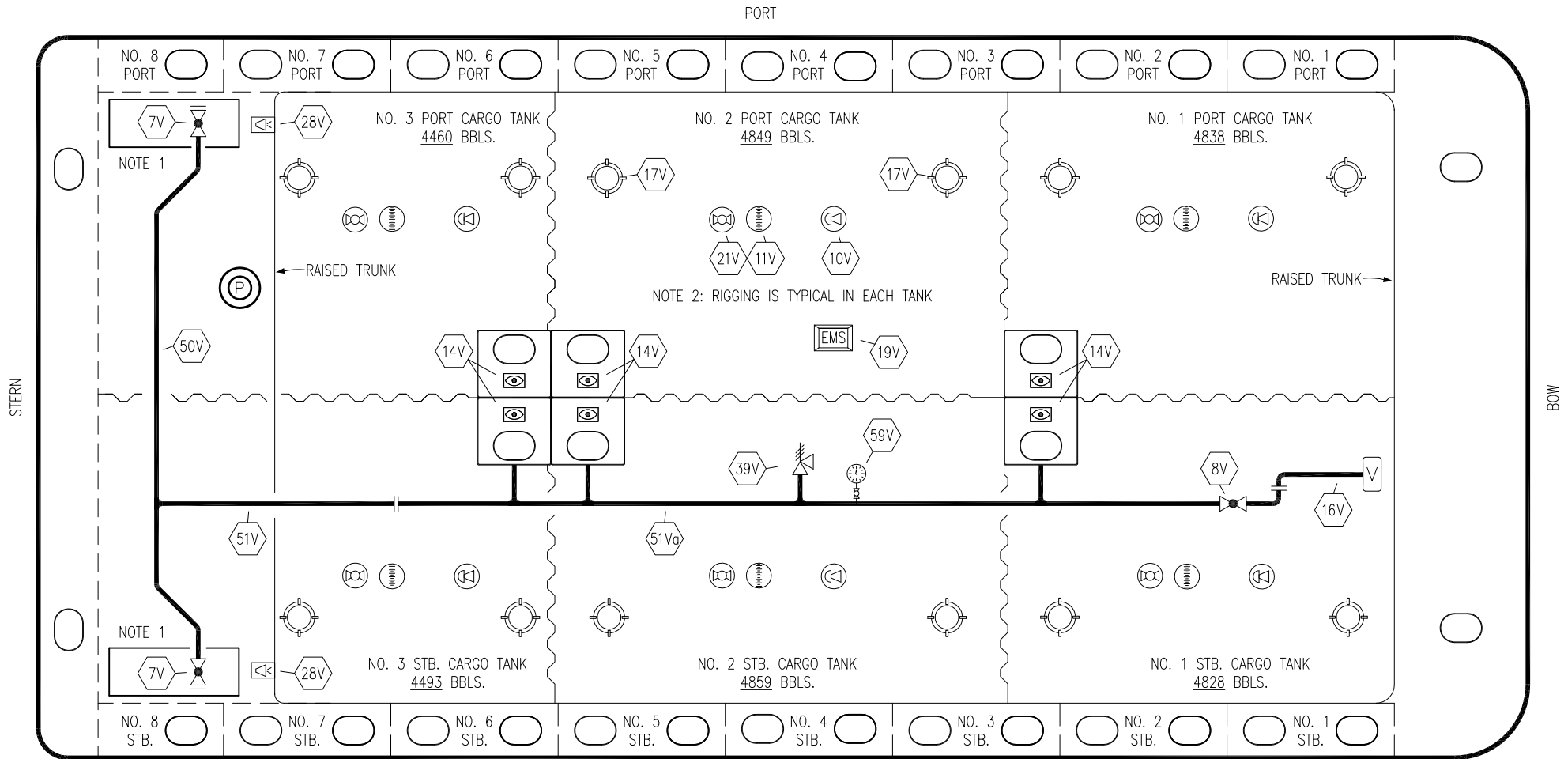
WEST GULF MARINE INC.

REV.	DATE	BY	CHK	APP	REVISION DESCRIPTION
2	12/17/21	MRV	DDA	JF	REVISED PER CLIENT COMMENTS
1	10/24/16	WFB	DDA		REVISED PER CLIENT COMMENTS
0	03/21/16	WFB	DDA		ISSUED FOR APPROVAL

KIRBY INLAND MARINE

CARGO
PIPING FLOW DIAGRAM

SCALE: NONE	KIRBY 29060	REV.
PAGE: 1 OF 3		2



NO	DESCRIPTION	NO	DESCRIPTION
7V	8" HEADER VALVE	21V	2" HERMETIC GAUGE
8V	8" VENT STACK VALVE	28V	DOCK CONNECTION ALARM
10V	8" HIGH LEVEL/OVERFILL ALARM	39V	PRESS/VAC RELIEF VALVE
11V	8" 1-METER STICK GAUGE	50V	8" VAPOR HEADER
14V	8" SIGHT GLASS W/GAUGE TREE	51V	8" VAPOR PIPELINE
16V	8" VAPOR VENT STACK	51Va	10" VAPOR PIPELINE
17V	20" BUTTERWORTH	59V	PRESS/VAC GAUGE
19V	EMERGENCY ENGINE SHUT DOWN	—	ABOVE DECK PIPING

NOTE 1: CONTAINMENT P/S
 NOTE 2: RIGGING IS TYPICAL IN EACH TANK

WEST GULF MARINE INC.

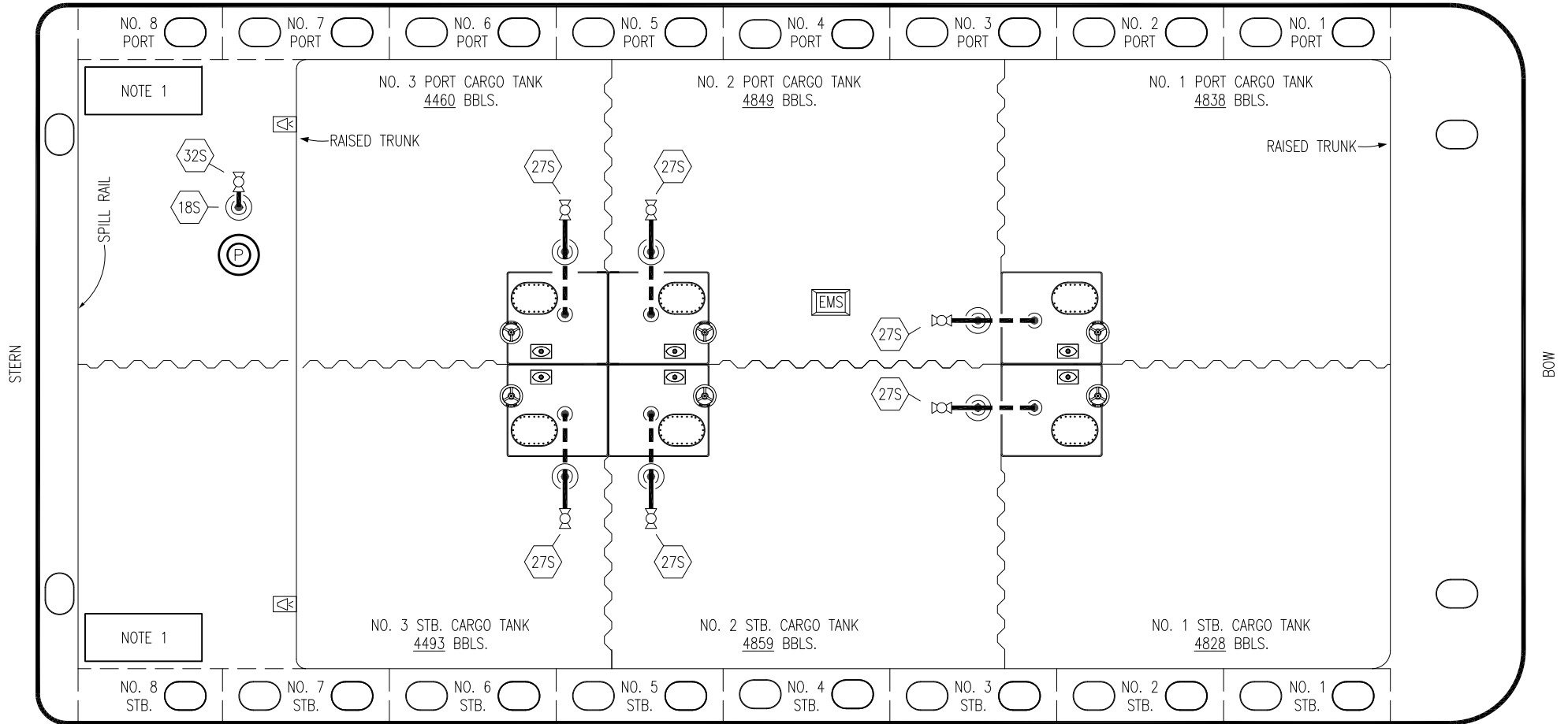
REV.	DATE	BY	CHK	APP	REVISION DESCRIPTION
2	12/17/21	MRV	DDA	JF	REVISED PER CLIENT COMMENTS
1	10/24/16	WFB	DDA		REVISED PER CLIENT COMMENTS
0	03/21/16	WFB	DDA		ISSUED FOR APPROVAL

KIRBY INLAND MARINE

VAPOR
PIPING FLOW DIAGRAM

SCALE: NONE	KIRBY 29060	REV.
PAGE: 2 OF 3		2

PORT



STERN

BOW

STARBOARD

- NO DESCRIPTION
- 18S TYP. STRIPPING DROP (Symbol)
- 27S SUMP SUCTION VALVE (Symbol)
- 32S PUMP WELL PRIMER VALVE (Symbol)

- ABOVE DECK PIPING
- - - BELOW DECK PIPING

NOTE 1: CONTAINMENT P/S

WEST GULF MARINE INC.

REV.	DATE	BY	CHK	APP	REVISION DESCRIPTION
1	12/17/21	MRV	DDA	JF	REVISED PER CLIENT COMMENTS
0	03/21/16	WFB	DDA		ISSUED FOR APPROVAL

KIRBY INLAND MARINE 

**STRIPPING
PIPING FLOW DIAGRAM**

SCALE: NONE
PAGE: 3 OF 3

KIRBY 29060 REV. **1**