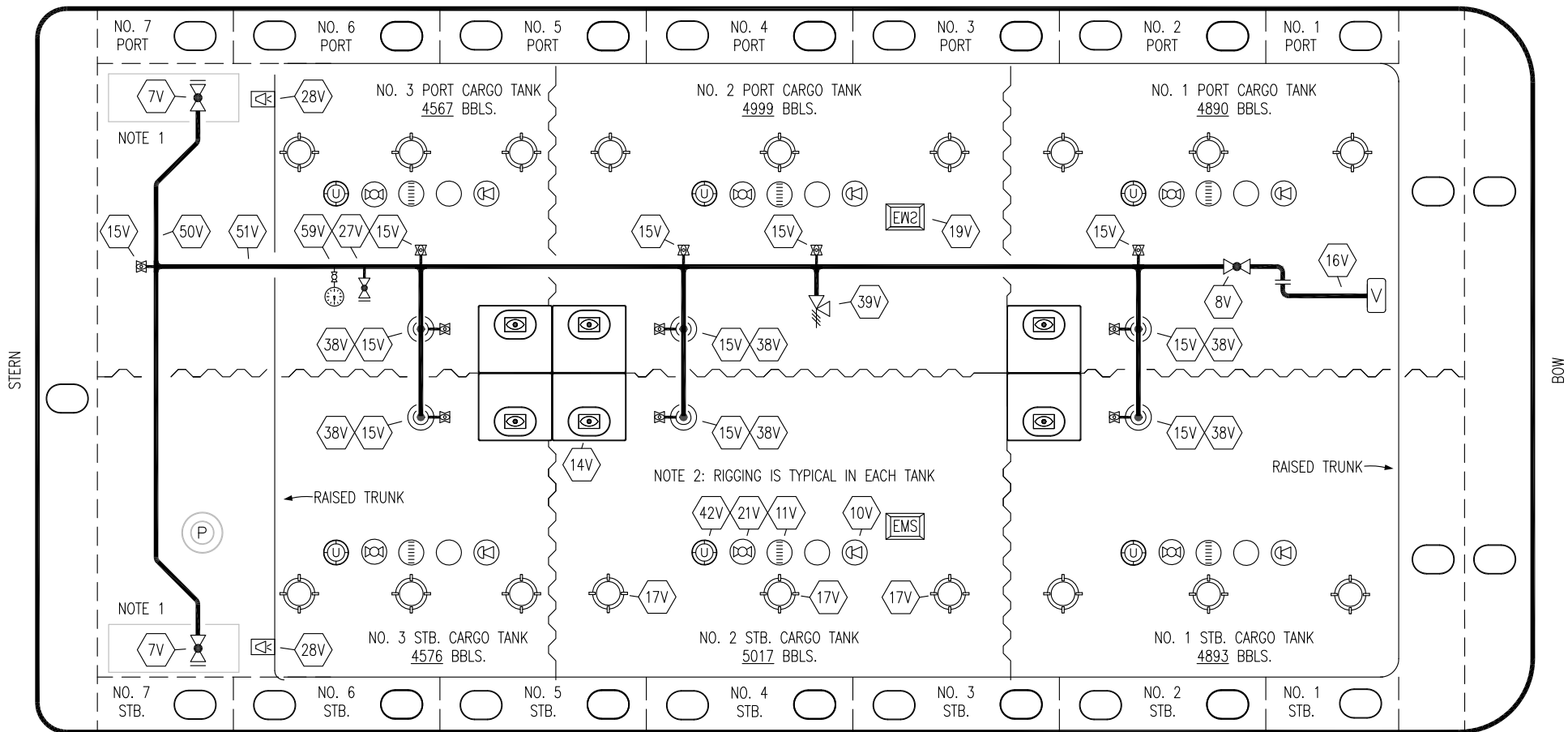


PORT



STERN

BOW

STARBOARD

NO	DESCRIPTION	NO	DESCRIPTION
7V	8" HEADER VALVE	21V	2" HERMETIC GAUGE
8V	8" VENT STACK VALVE	27V	1/4" TEST CONNECTION VALVE
10V	8" HIGH LEVEL/OVERFILL ALARM	28V	DOCK CONNECTION ALARM
11V	8" 1-METER STICK GAUGE	38V	8" VAPOR PENETRATION
14V	6" SIGHT GLASS W/GAUGE TREE	39V	PRESS/VAC RELIEF VALVE
15V	2" INSPECTION PORT	42V	8" ULLAGE HATCH
16V	8" VAPOR VENT STACK	50V	8" VAPOR HEADER
17V	14" BUTTERWORTH	51V	8" VAPOR PIPELINE
18V	2" RESTRICTIVE GAUGE TUBE	59V	PRESS/VAC GAUGE
19V	EMERGENCY ENGINE SHUT DOWN	—	—
		—	—

NOTE 1: CONTAINMENT P/S

NOTE 2: RIGGING IS TYPICAL IN EACH TANK

WEST GULF MARINE

REV.	DATE	BY	CHK	APP	REVISION DESCRIPTION
0	06/12/12	DCB	DDA		FOR APPROVAL

KIRBY INLAND MARINE 

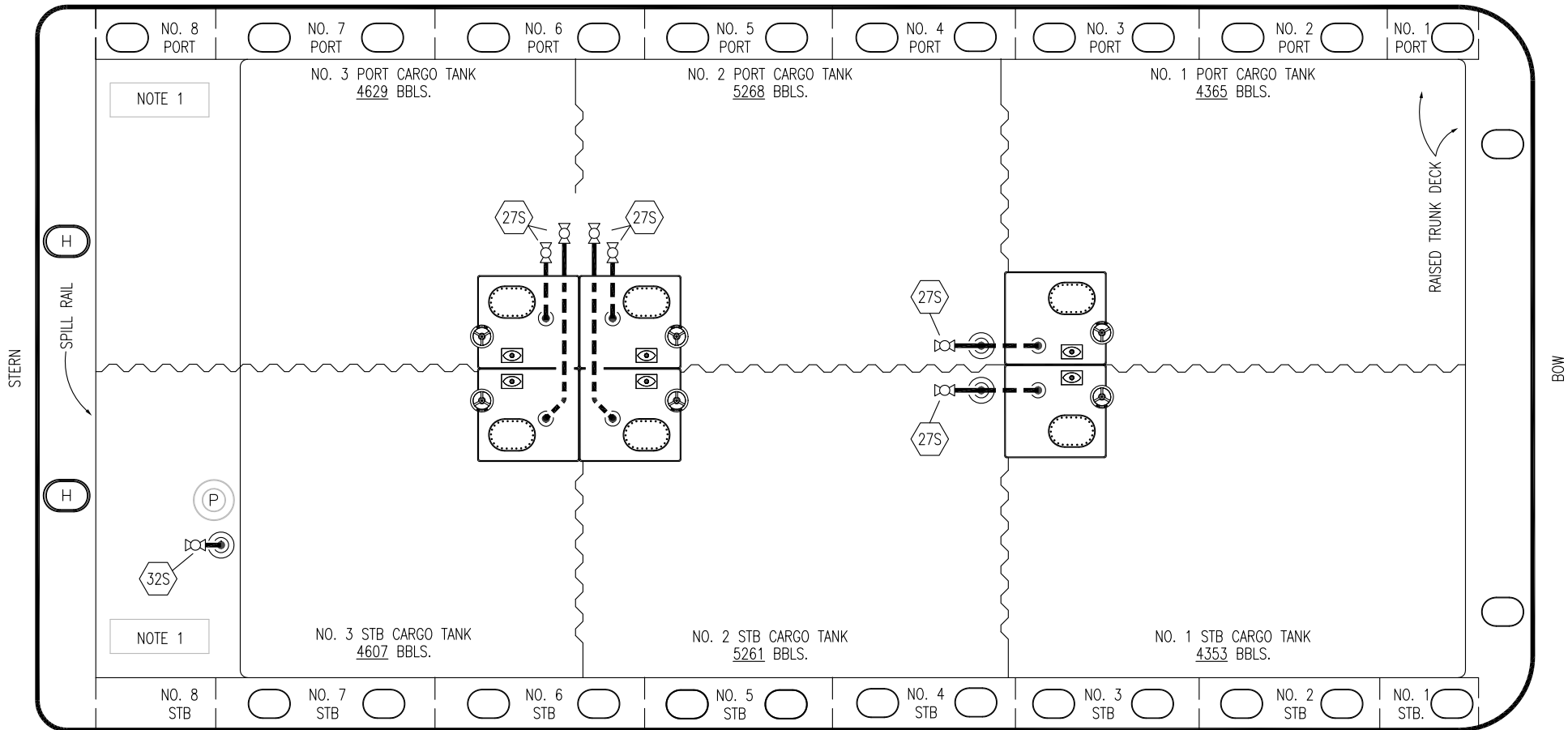
**VAPOR
PIPING FLOW DIAGRAM**

SCALE: NONE
PAGE: 2 OF 3

KIRBY 29058

REV. **0**

PORT



NOTE 1

NOTE 1

STERN

BOW

STARBOARD

- | | |
|-----|----------------------------|
| NO | DESCRIPTION |
| 18S | TYP. STRIPPING PENETRATION |
| 27S | SUMP SUCTION |
| 32S | PUMP WELL PRIMER VALVE |

- | | |
|--|-------------------|
| | ABOVE DECK PIPING |
| | BELOW DECK PIPING |

NOTE 1: CONTAINMENT P/S

WEST GULF MARINE

						KIRBY INLAND MARINE	
						STRIPPING PIPING FLOW DIAGRAM	
0	06/12/12	DCB	DDA	FOR APPROVAL		SCALE:	NONE
REV.	DATE	BY	CHK	APP	REVISION DESCRIPTION	PAGE:	3 OF 3
						KIRBY 29058	
						REV.	0