

NO	DESCRIPTION	NO	DESCRIPTION
1C	CARGO TANK VALVE	12C	BURP VALVE RETURN TO CARGO TANK
2C	LOAD VALVE	13C	CARGO PIPING BLOCK VALVE
3C	MASTER SUCTION VALVE	19C	CARGO HEADER
4C	DISCHARGE VALVE	24C	FLOW INDICATOR
5C	HEADER VALVE	30C	CARGO PIPELINE
8C	RELIEF VALVE	31C	2" BYPASS VALVE
9C	CHECK VALVE	37C	CARGO DROP
10C	BURP VALVE	—	— ABOVE DECK PIPING
11C	BLEED OFF VALVE	- - -	BELOW DECK PIPING

NOTE 1: CONTAINMENT P/S

WEST GULF MARINE

2	08/17/18	WFB	DDA	REVISED PER CLIENT COMMENTS
1	03/24/17	WFB	DDA	REVISED PER CLIENT COMMENTS
0	06/12/12	DCB	DDA	FOR APPROVAL
REV.	DATE	BY	CHK	APP
				REVISION DESCRIPTION

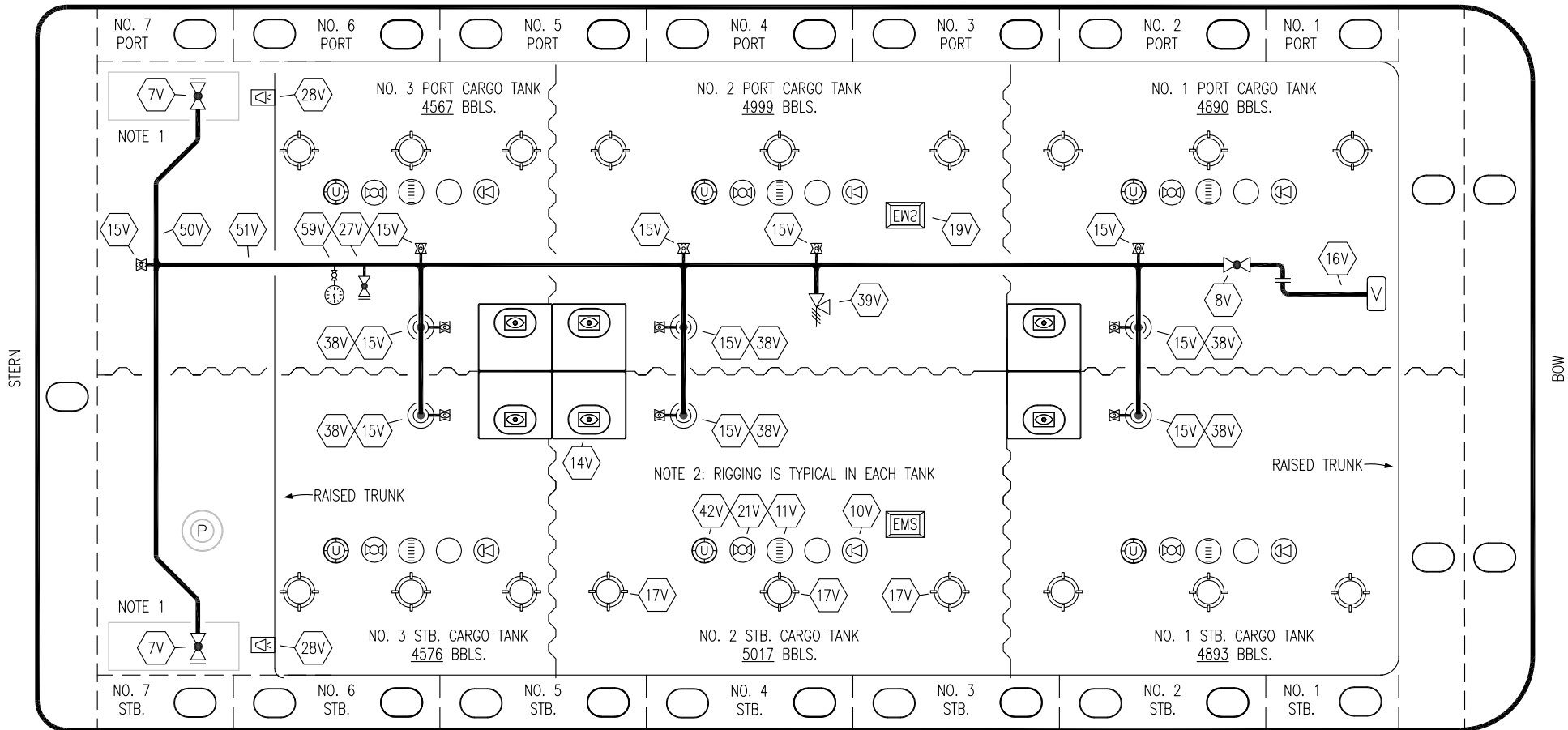
KIRBY INLAND MARINE

CARGO

PIPING FLOW DIAGRAM

SCALE: NONE	KIRBY 29057	REV. 2
PAGE: 1 OF 3		

PORT



STERN

BOW

STARBOARD

NO	DESCRIPTION	NO	DESCRIPTION
7V	8" HEADER VALVE	21V	2" HERMETIC GAUGE
8V	8" VENT STACK VALVE	27V	1/4" TEST CONNECTION VALVE
10V	8" HIGH LEVEL/OVERFILL ALARM	28V	DOCK CONNECTION ALARM
11V	8" 1-METER STICK GAUGE	38V	8" VAPOR PENETRATION
14V	6" SIGHT GLASS W/GAUGE TREE	39V	PRESS/VAC RELIEF VALVE
15V	2" INSPECTION PORT	42V	8" ULLAGE HATCH
16V	8" VAPOR VENT STACK	50V	8" VAPOR HEADER
17V	14" BUTTERWORTH	51V	8" VAPOR PIPELINE
18V	2" RESTRICTIVE GAUGE TUBE	59V	PRESS/VAC GAUGE
19V	EMERGENCY ENGINE SHUT DOWN	—	—
		—	—

— ABOVE DECK PIPING

NOTE 1: CONTAINMENT P/S

NOTE 2: RIGGING IS TYPICAL IN EACH TANK

WEST GULF MARINE

0	06/12/12	DCB	DDA	FOR APPROVAL
REV.	DATE	BY	CHK	APP

KIRBY INLAND MARINE 

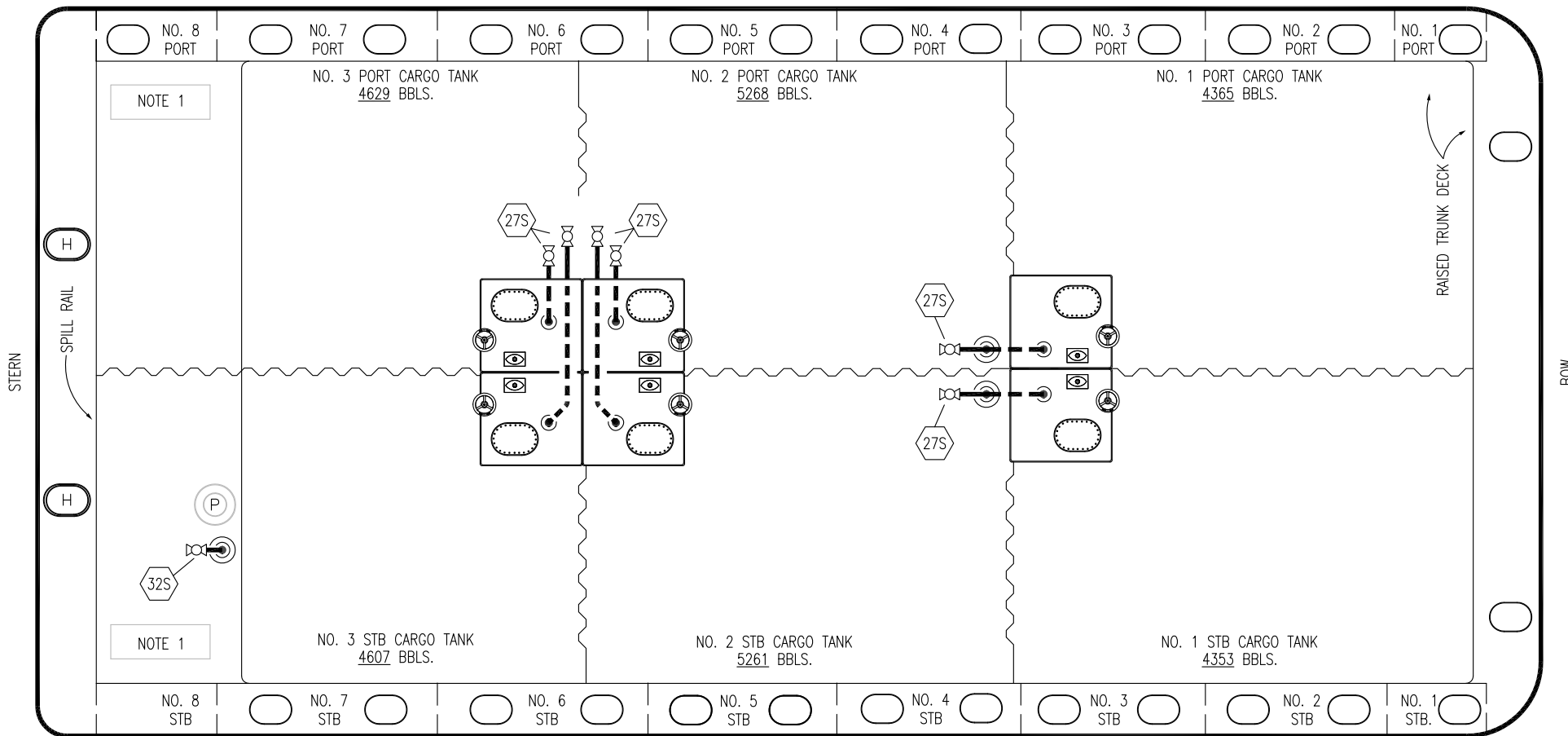
**VAPOR
PIPING FLOW DIAGRAM**

SCALE: NONE
PAGE: 2 OF 3

KIRBY 29057

REV. **0**

PORT



STARBOARD

- | | |
|-----|----------------------------|
| NO | DESCRIPTION |
| 18S | TYP. STRIPPING PENETRATION |
| 27S | SUMP SUCTION |
| 32S | PUMP WELL PRIMER VALVE |

- | | |
|--|-------------------|
| | ABOVE DECK PIPING |
| | BELOW DECK PIPING |

NOTE 1: CONTAINMENT P/S

WEST GULF MARINE

						KIRBY INLAND MARINE	
						STRIPPING PIPING FLOW DIAGRAM	
0	06/12/12	DCB	DDA	FOR APPROVAL		SCALE: NONE	KIRBY 29057
REV.	DATE	BY	CHK	APP	REVISION DESCRIPTION	PAGE: 3 OF 3	
						REV. 0	