


- | | | | |
|-----|----------------------|-----|---------------------------------|
| NO | DESCRIPTION | NO | DESCRIPTION |
| 1C | CARGO TANK VALVE | 12C | BURP VALVE RETURN TO CARGO TANK |
| 2C | LOAD VALVE | 13C | CARGO PIPING BLOCK VALVE |
| 3C | MASTER SUCTION VALVE | 15C | 2" BYPASS VALVE AROUND CHECK |
| 4C | DISCHARGE VALVE | 19C | CARGO HEADER |
| 5C | HEADER VALVE | 24C | FLOW INDICATOR |
| 6C | SALVAGE VALVE | 30C | CARGO PIPELINE |
| 8C | RELIEF VALVE | 37C | CARGO DROP |
| 9C | CHECK VALVE | — | — ABOVE DECK PIPING |
| 10C | BURP VALVE | --- | --- BELOW DECK PIPING |
| 11C | BLEED OFF VALVE | | |

NOTE 1: CONTAINMENT P/S

WEST GULF MARINE

REV.	DATE	BY	CHK	APP	REVISION DESCRIPTION
1	07/12/18	WFB	DDA		REVISED PER CLIENT COMMENTS
0	06/12/12	DCB	DDA		FOR APPROVAL



KIRBY INLAND MARINE

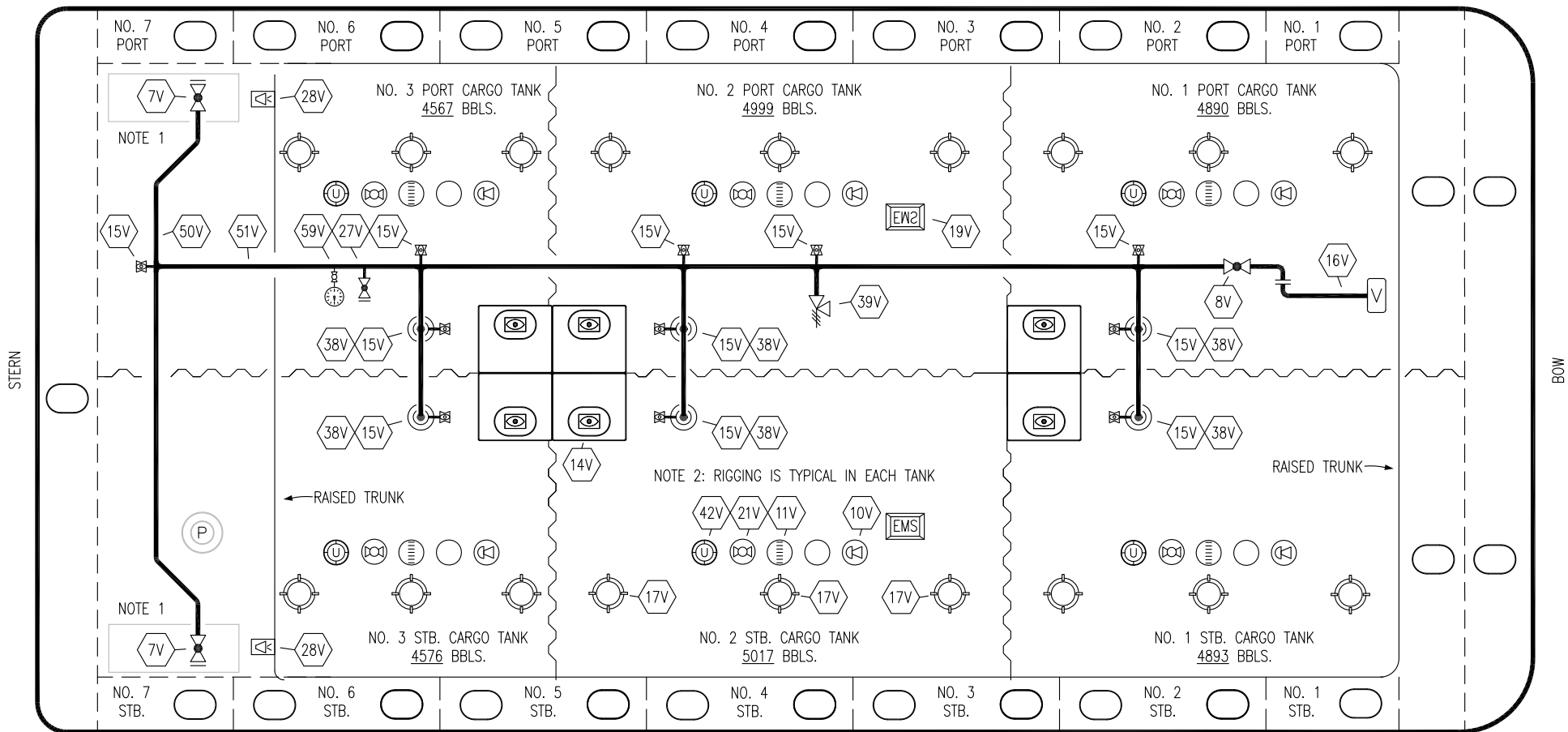
CARGO

PIPING FLOW DIAGRAM

KIRBY 29055

SCALE: NONE	REV. 1
PAGE: 1 OF 3	

PORT



STERN

BOW

STARBOARD

NO	DESCRIPTION	NO	DESCRIPTION
7V	8" HEADER VALVE	21V	2" HERMETIC GAUGE
8V	8" VENT STACK VALVE	27V	1/4" TEST CONNECTION VALVE
10V	8" HIGH LEVEL/OVERFILL ALARM	28V	DOCK CONNECTION ALARM
11V	8" 1-METER STICK GAUGE	38V	8" VAPOR PENETRATION
14V	6" SIGHT GLASS W/GAUGE TREE	39V	PRESS/VAC RELIEF VALVE
15V	2" INSPECTION PORT	42V	8" ULLAGE HATCH
16V	8" VAPOR VENT STACK	50V	8" VAPOR HEADER
17V	14" BUTTERWORTH	51V	8" VAPOR PIPELINE
18V	2" RESTRICTIVE GAUGE TUBE	59V	PRESS/VAC GAUGE
19V	EMERGENCY ENGINE SHUT DOWN	—	—
		—	—

— ABOVE DECK PIPING

NOTE 1: CONTAINMENT P/S

NOTE 2: RIGGING IS TYPICAL IN EACH TANK

WEST GULF MARINE

0	06/12/12	DCB	DDA	FOR APPROVAL
REV.	DATE	BY	CHK	APP
				REVISION DESCRIPTION

KIRBY INLAND MARINE 

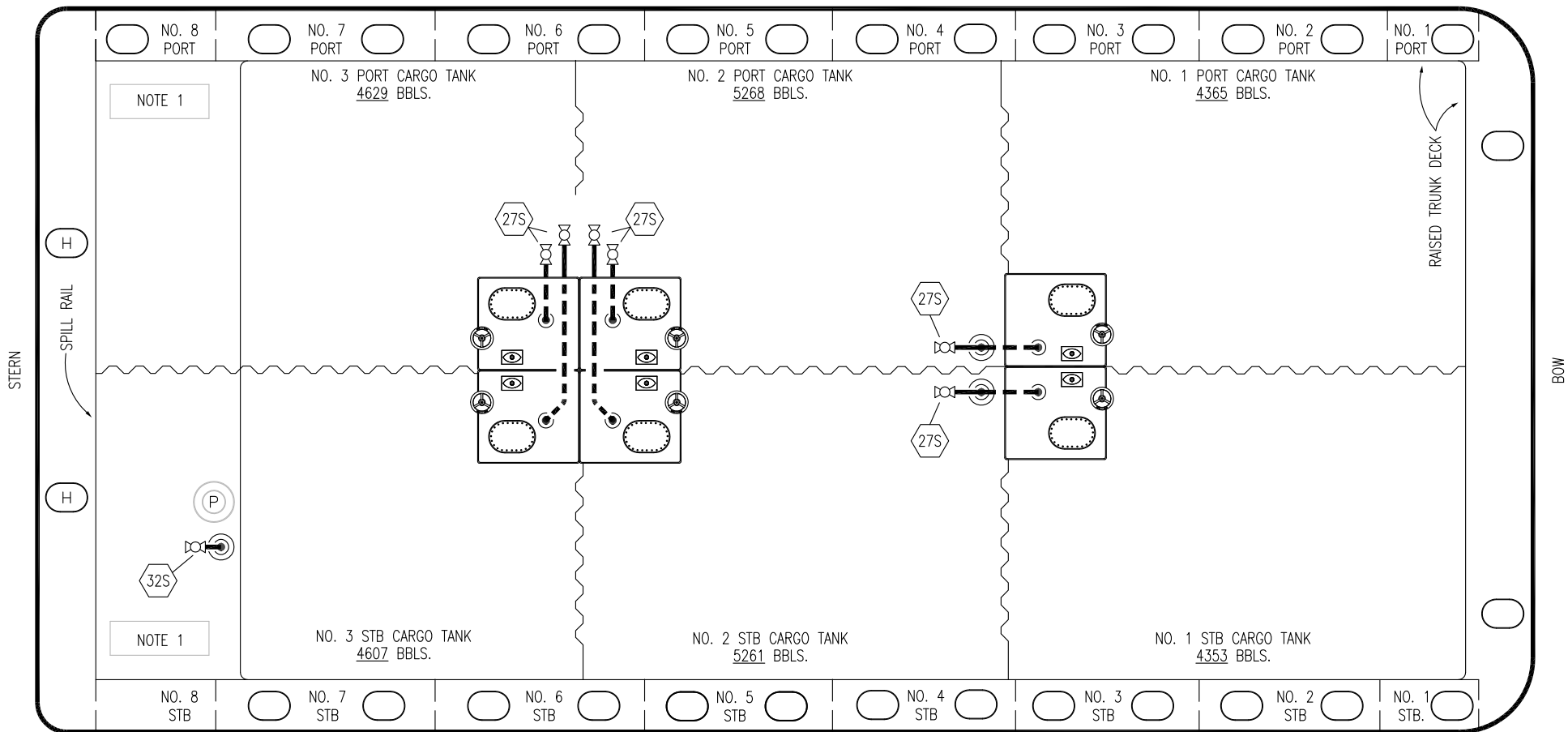
**VAPOR
PIPING FLOW DIAGRAM**

SCALE: NONE
PAGE: 2 OF 3


KIRBY 29055



REV. **0**

PORT




STARBOARD

- | NO | DESCRIPTION |
|-----|--|
| 18S | TYP. STRIPPING PENETRATION  |
| 27S | SUMP SUCTION |
| 32S | PUMP WELL PRIMER VALVE |

-  ABOVE DECK PIPING
-  BELOW DECK PIPING

NOTE 1: CONTAINMENT P/S

WEST GULF MARINE

<p style="font-size: 24pt; margin: 0;">KIRBY INLAND MARINE </p> <p style="font-size: 18pt; margin: 0; text-align: center;">STRIPPING PIPING FLOW DIAGRAM</p>					
0	06/12/12	DCB	DDA	FOR APPROVAL	SCALE: NONE
REV.	DATE	BY	CHK	APP	REVISION DESCRIPTION
					PAGE: 3 OF 3
					KIRBY 29055
					REV. 0