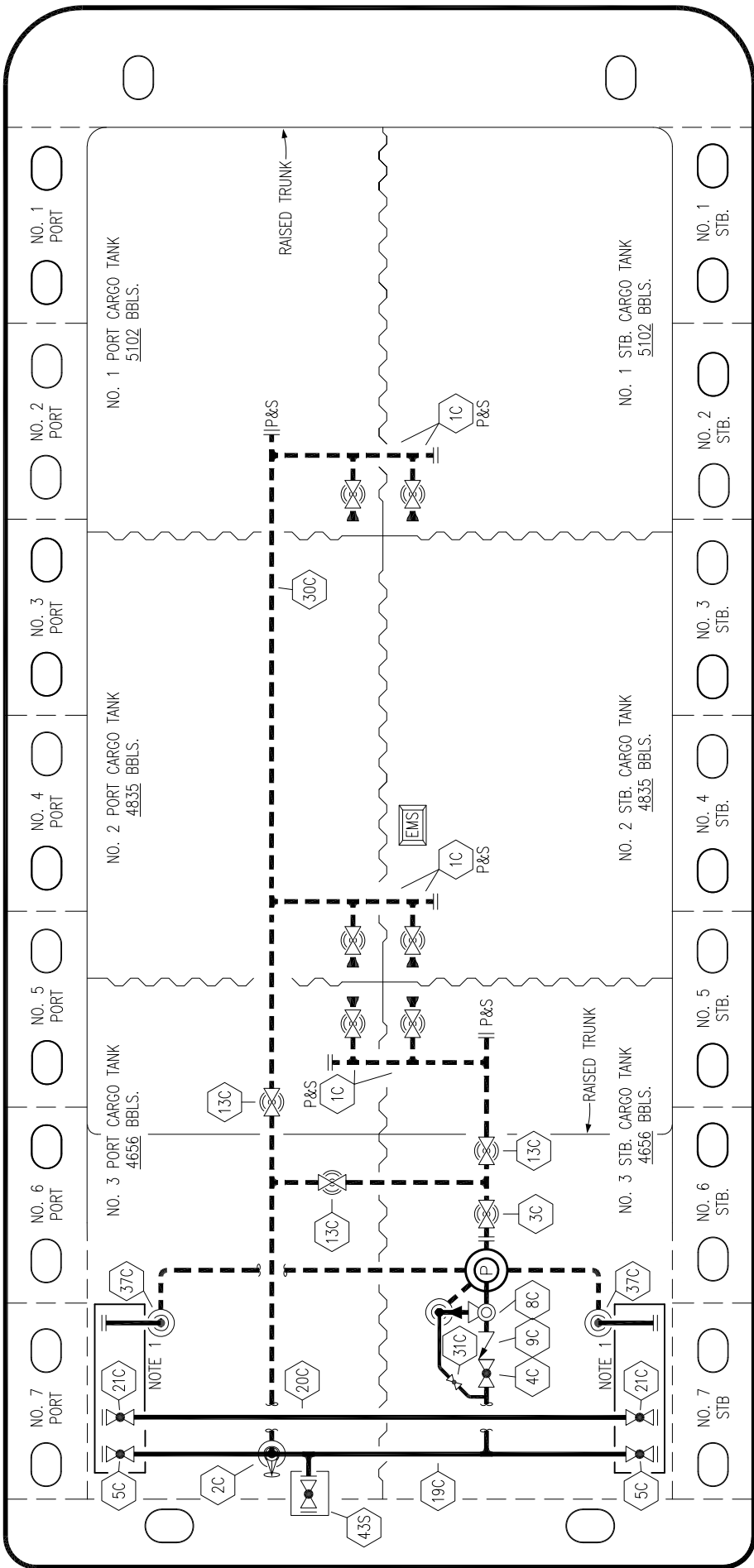


PORT

BOW



STERN

STARBOARD

NO	DESCRIPTION	NO	DESCRIPTION
1C	CARGO TANK VALVE	20C	DUMMY HEADER PIPING
2C	LOAD VALVE	21C	DUMMY HEADER VALVE
3C	MASTER SUCTION VALVE	30C	CARGO PIPELINE
4C	DISCHARGE VALVE	37C	CARGO DROP
5C	HEADER VALVE	43S	STERN HEADER VALVE
8C	RELIEF VALVE	—	ABOVE DECK PIPING
9C	CHECK VALVE	---	BELOW DECK PIPING
13C	CARGO PIPING BLOCK VALVE	31C	BYPASS VALVE
19C	CARGO HEADER		

TRINITY



KIRBY INLAND MARINE

**CARGO**

**PIPING FLOW DIAGRAM**

REV. **3**  
SCALE: NONE  
PAGE: 1 OF 3

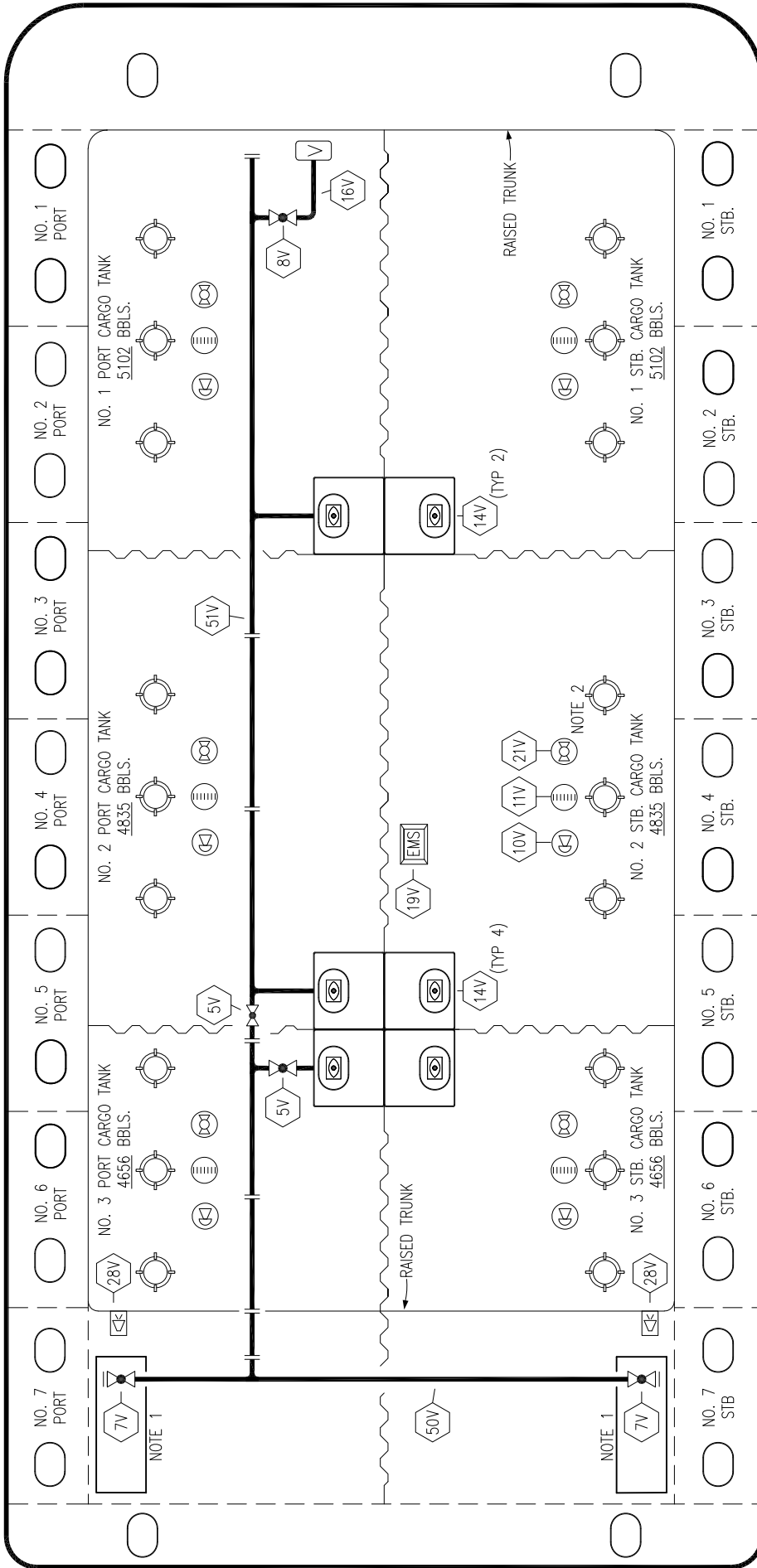
NOTE 1: CONTAINMENT P/S

REV.	DATE	BY	CHK	APP	REVISION DESCRIPTION
3	06/19/19	NRB	DDA		REVISED PER CLIENT COMMENTS
2	06/11/19	NRB	DDA		ADDED STRIPPING DIAGRAM
1	06/07/19	NRB	DDA		REVISED BARGE NAME
0	02/15/19	MRV	DDA		ISSUED FOR APPROVAL

PORT

STERN

BOW



STARBOARD

- |     |                            |
|-----|----------------------------|
| NO  | DESCRIPTION                |
| 5V  | BLOCK VALVE                |
| 7V  | HEADER VALVE               |
| 8V  | VENT STACK VALVE           |
| 10V | HIGH LEVEL/OVERFILL ALARM  |
| 11V | 1-METER GAUGE STICK        |
| 14V | SIGHT GLASS                |
| 16V | VAPOR VENT STACK           |
| 19V | EMERGENCY ENGINE SHUT DOWN |
| 21V | HERMETIC GAUGE             |
| 28V | DOCK CONNECTION ALARM      |
| 50V | VAPOR HEADER               |
| 51V | VAPOR PIPELINE             |
| —   | ABOVE DECK PIPING          |

NOTE 2: TYPICAL RIGGING IN EACH TANK  
 NOTE 1: CONTAINMENT P/S

TRINITY



**KIRBY INLAND MARINE**

**VAPOR**

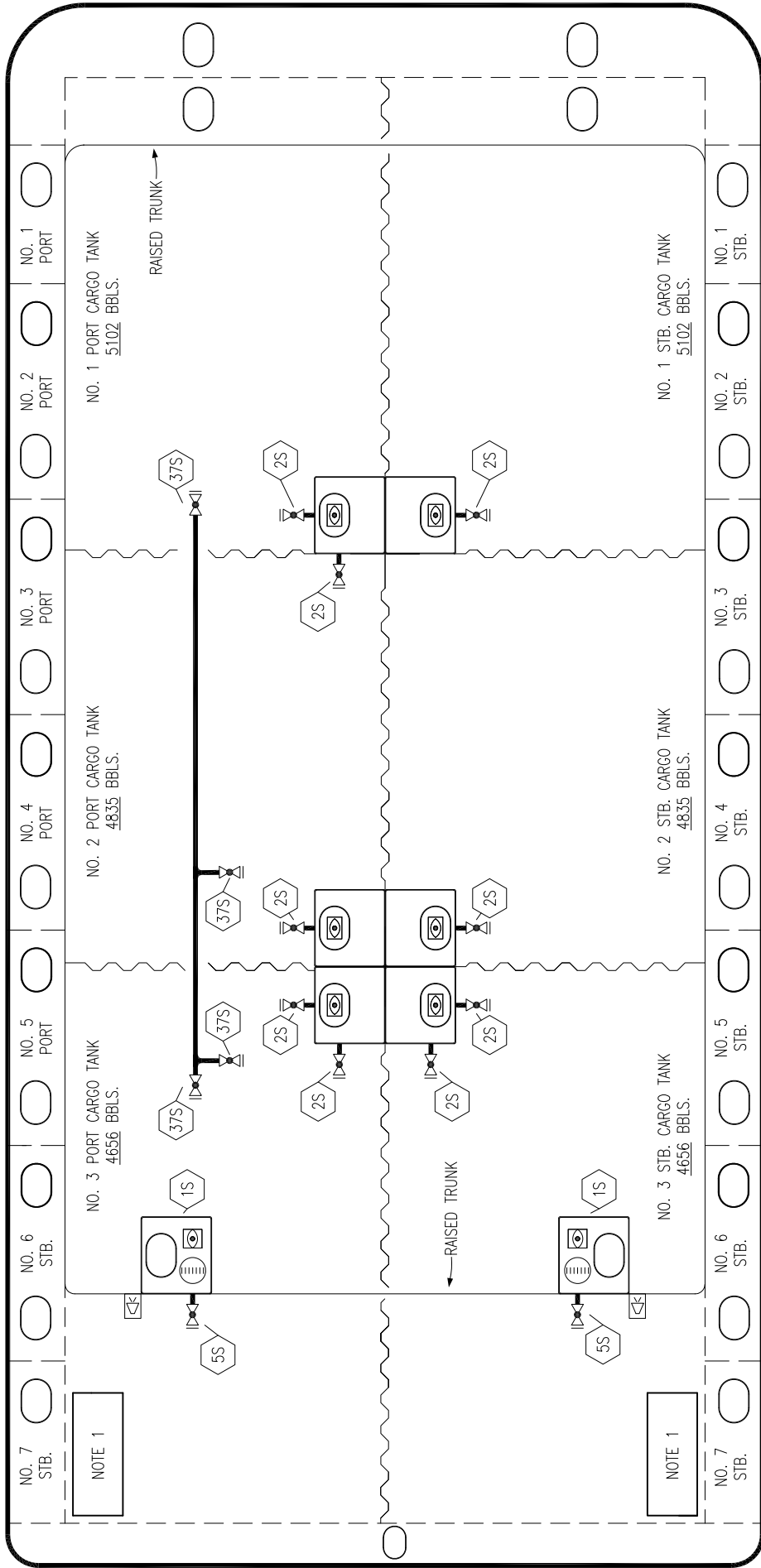
**PIPING FLOW DIAGRAM**

REV.	DATE	BY	CHK	APP	REVISION DESCRIPTION
3	06/19/19	NRB	DDA		REVISED PER CLIENT COMMENTS
2	06/11/19	NRB	DDA		ADDED STRIPPING DIAGRAM
1	06/07/19	NRB	DDA		REVISED BARGE NAME
0	02/15/19	MRV	DDA		ISSUED FOR APPROVAL

PORT

BOW

STERN



NO DESCRIPTION

- 1S SLOP TANK
- 2S CARGO SUMP SUCTION VALVE
- 5S SLOP TANK SUCTION VALVE
- 18S STRIPPING DROP
- 37S BLOCK VALVE
- ABOVE DECK PIPING

NOTE 1: CONTAINMENT P/S

TRINITY



KIRBY INLAND MARINE

**STRIPPING**

**PIPING FLOW DIAGRAM**

REV.	DATE	BY	CHK	APP	REVISION DESCRIPTION
1	06/19/19	NRB	DDA		REVISED PER CLIENT COMMENTS
0	06/11/19	NRB	DDA		ISSUED FOR APPROVAL

SCALE: NONE  
PAGE: 3 OF 3

REV. **1**

**KIRBY 29042**