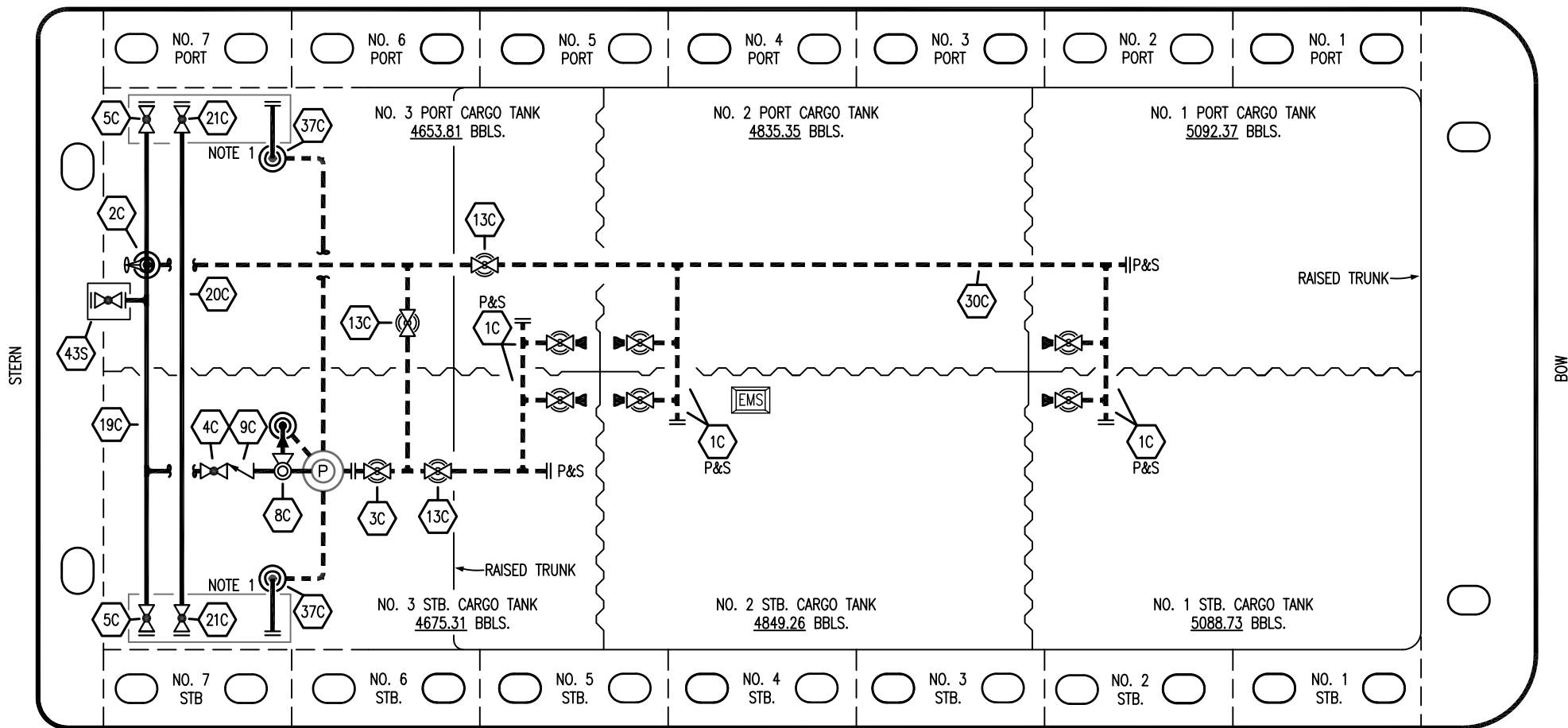


PORT



STARBOARD

NO	DESCRIPTION	NO	DESCRIPTION
1C	CARGO TANK VALVE	20C	DUMMY HEADER PIPING
2C	LOAD VALVE	21C	DUMMY HEADER VALVE
3C	MASTER SUCTION VALVE	30C	CARGO PIPELINE
4C	DISCHARGE VALVE	37C	CARGO DROP
5C	HEADER VALVE	43S	STERN HEADER VALVE
8C	RELIEF VALVE	—	— ABOVE DECK PIPING
9C	CHECK VALVE	- - -	- - - BELOW DECK PIPING
13C	CARGO PIPING BLOCK VALVE		
19C	CARGO HEADER		

NOTE 1: CONTAINMENT P/S

EX. CTCO 337

REV.	DATE	BY	CHK	APP	REVISION DESCRIPTION
2	06/24/24	AC	DDA	REM	REVISED PER CLIENT COMMENTS
1	06/05/19	NRB	DDA		REVISED BARGE NAME
0	02/15/19	MRV	DDA		ISSUED FOR APPROVAL

KIRBY INLAND MARINE

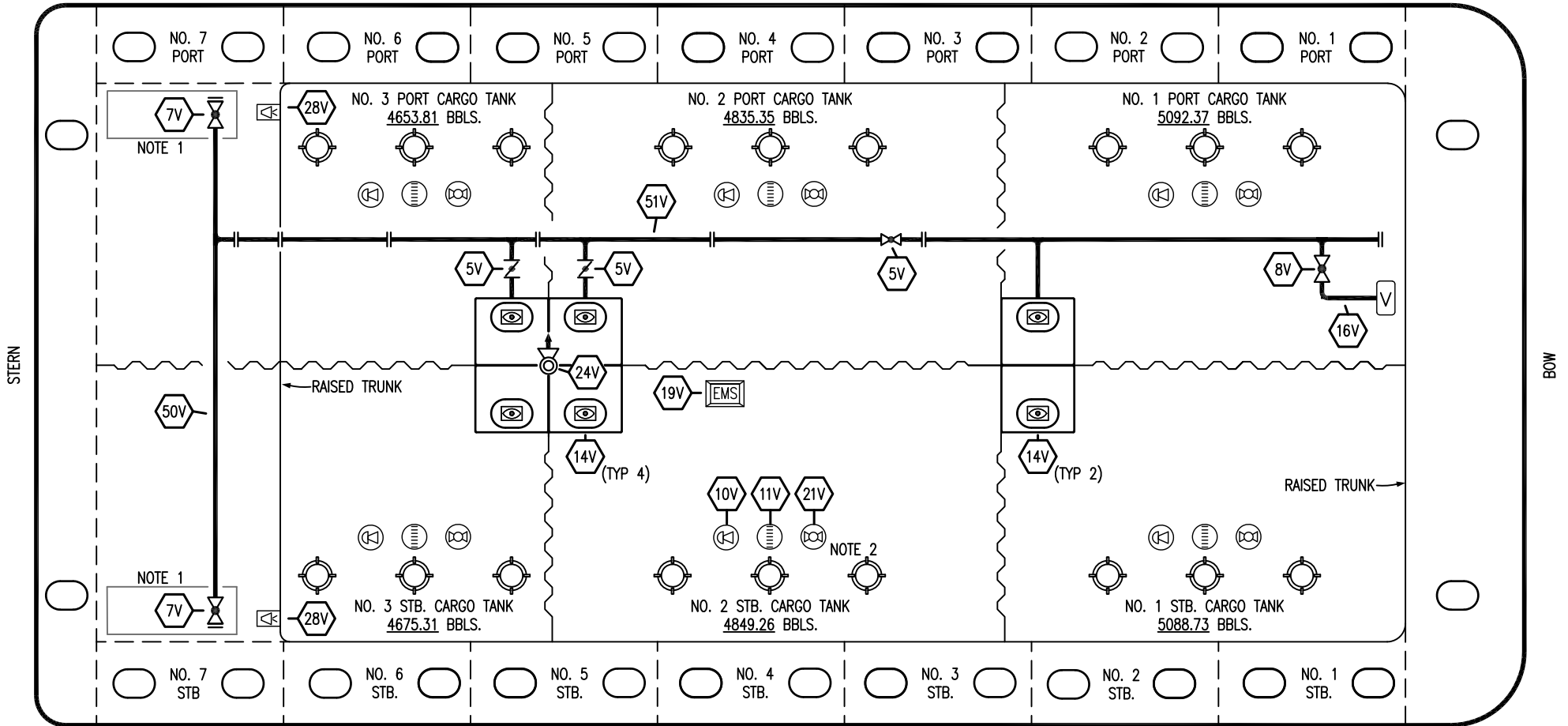
**CARGO
PIPING FLOW DIAGRAM**

SCALE: NONE
PAGE: 1 OF 3

Kirby 29041

REV. **2**

PORT



STARBOARD

- | | | | |
|-----|----------------------------|-----|-----------------------|
| NO | DESCRIPTION | NO | DESCRIPTION |
| 5V | BLOCK VALVE | 21V | HERMETIC GAUGE |
| 7V | HEADER VALVE | 24V | PRESSURE RELIEF VALVE |
| 10V | HIGH LEVEL/OVERFILL ALARM | 28V | DOCK CONNECTION ALARM |
| 11V | 1-METER GAUGE STICK | 50V | VAPOR HEADER |
| 14V | SIGHT GLASS | 51V | VAPOR PIPELINE |
| 19V | EMERGENCY ENGINE SHUT DOWN | — | ABOVE DECK PIPING |

NOTE 2: TYPICAL RIGGING IN EACH TANK
 NOTE 1: CONTAINMENT P/S

EX. CTCO 337

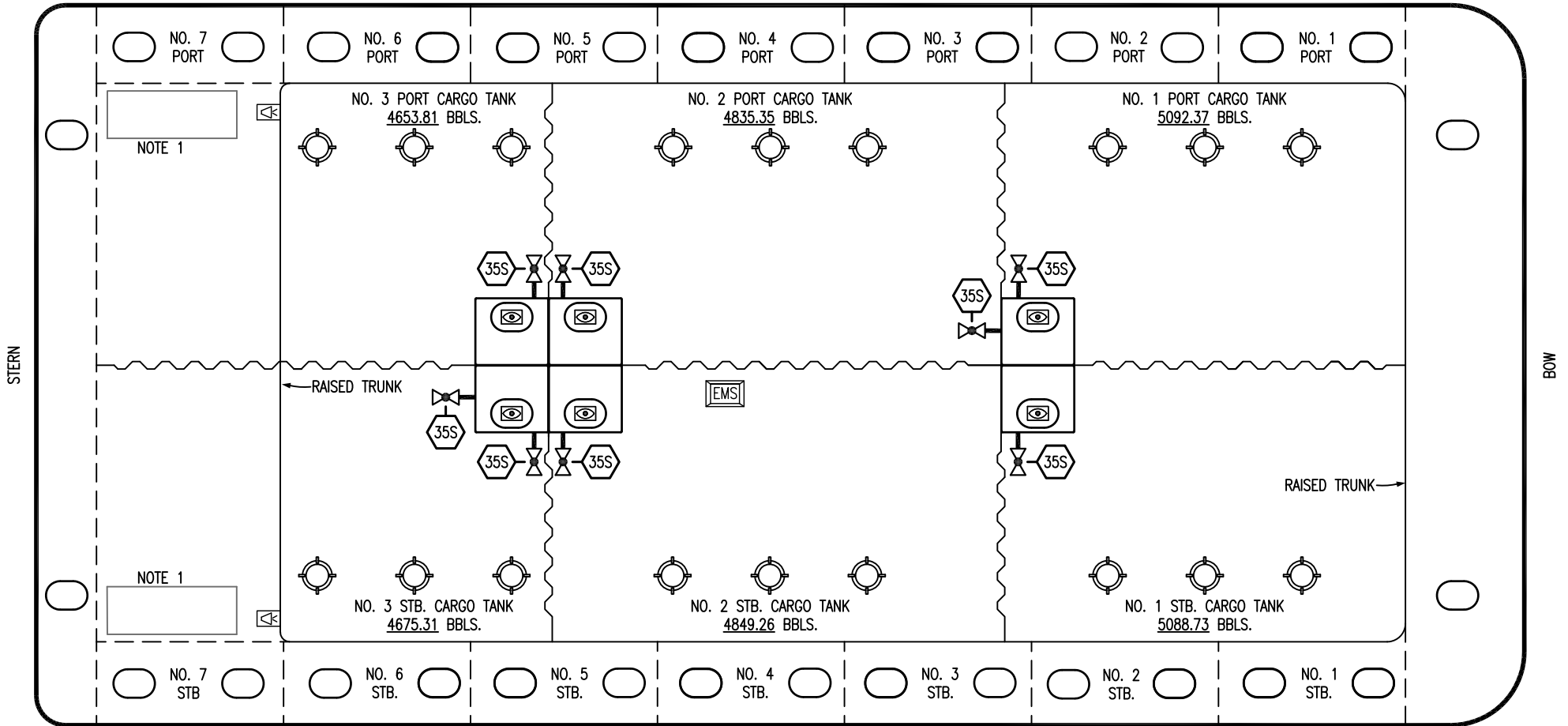
REV.	DATE	BY	CHK	APP	REVISION DESCRIPTION
2	06/27/24	AC	DDA	REM	REVISED PER CLIENT COMMENTS
1	06/05/19	NRB	DDA		REVISED BARGE NAME
0	02/15/19	MRV	DDA		ISSUED FOR APPROVAL

KIRBY INLAND MARINE

**VAPOR
PIPING FLOW DIAGRAM**

SCALE: NONE	Kirby 29041	REV. 2
PAGE: 2 OF 3		

PORT



STERN

BOW


STARBOARD

NO DESCRIPTION
 35S STRIPPING VALVE

NOTE 1: CONTAINMENT P/S

EX. CTCO 337

0	06/24/24	AC	DDA	REM	ISSUED FOR APPROVAL	SCALE: NONE
REV.	DATE	BY	CHK	APP	REVISION DESCRIPTION	PAGE: 3 OF 3

KIRBY INLAND MARINE 

**STRIPPING
 PIPING FLOW DIAGRAM**

KIRBY 27013

REV. **0**