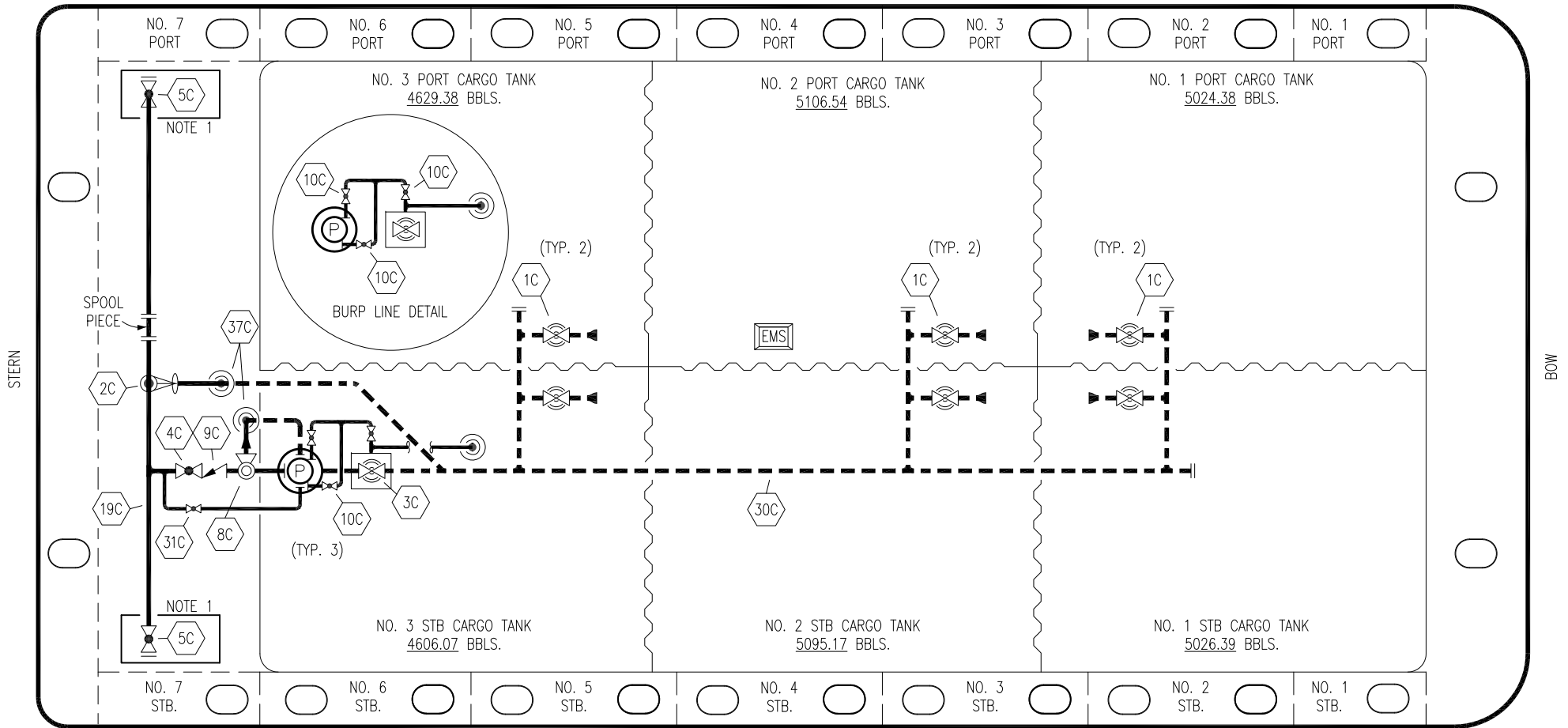


PORT



STARBOARD

NO	DESCRIPTION	NO	DESCRIPTION
1C	8" CARGO TANK VALVE	10C	BURP VALVE
2C	8" LOAD VALVE	19C	8" CARGO HEADER
3C	10" MASTER SUCTION VALVE	30C	10" CARGO PIPELINE
4C	8" DISCHARGE VALVE	31C	BYPASS VALVE
5C	8" HEADER VALVE	37C	CARGO DROP
8C	6" RELIEF VALVE	—	— ABOVE DECK PIPING
9C	8" CHECK VALVE	---	--- BELOW DECK PIPING

NOTE 1: CONTAINMENT P/S

TRINITY MARINE – EX. SCF 1201–1204

REV.	DATE	BY	CHK	APP	REVISION DESCRIPTION
3	09/20/22	MRV	DDA	FIX	REVISED PER CLIENT COMMENTS
2	04/03/18	WFB	DDA		REVISED WING TANK LAYOUT
1	07/28/17	WFB	DDA		REVISED BURP LINE
0	04/28/17	WFB	DDA	OF	APPROVED

KIRBY INLAND MARINE

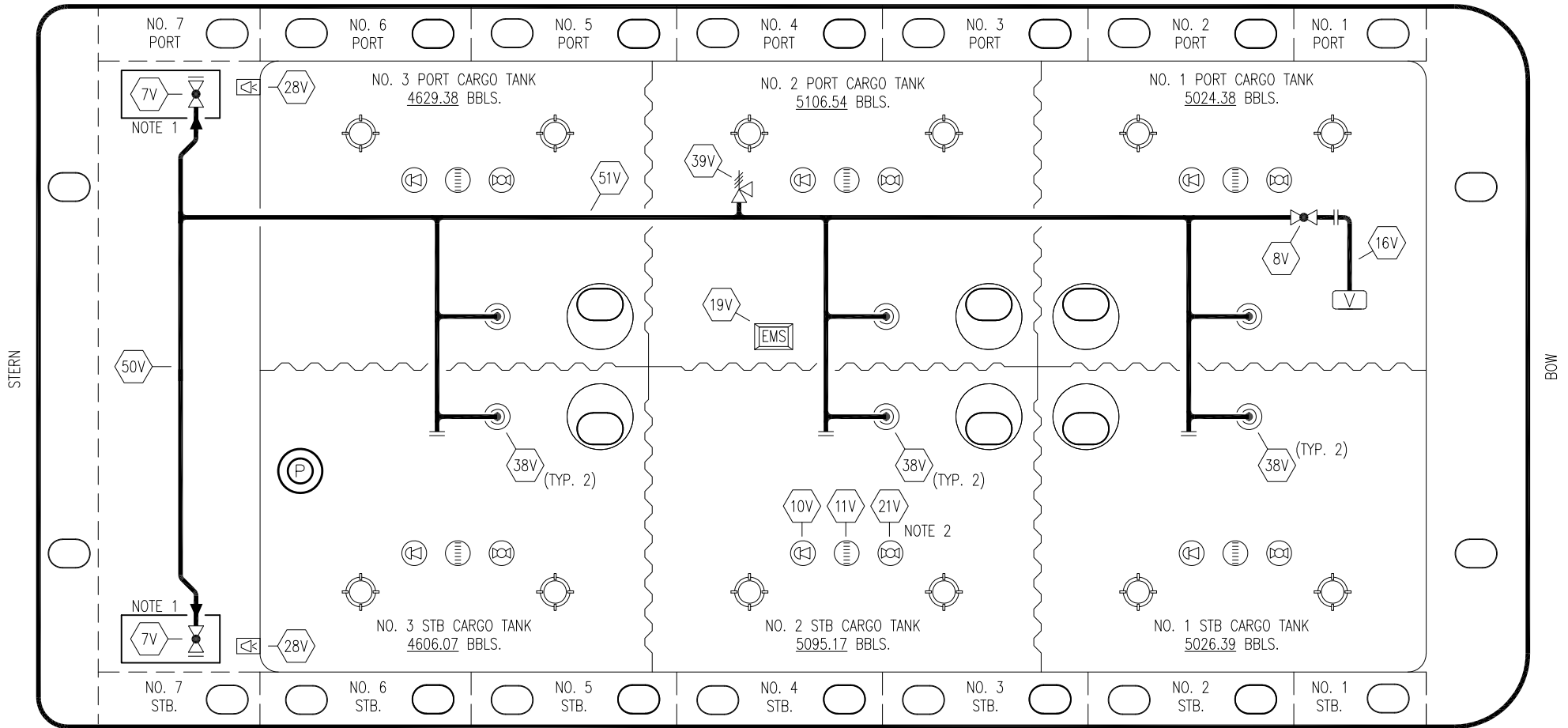
**CARGO
PIPING FLOW DIAGRAM**

SCALE: NONE
PAGE: 1 OF 3

KIRBY 29023

REV. **3**

PORT



STERN

BOW

STARBOARD

NO	DESCRIPTION	NO	DESCRIPTION
7V	HEADER VALVE	28V	DOCK CONNECTION ALARM
8V	VENT STACK VALVE	38V	VAPOR DROP OR PENETRATION
10V	HIGH LEVEL/OVERFILL ALARM	39V	PRESSURE/VACUUM RELIEF VALVE
11V	GAUGE STICK	50V	VAPOR HEADER
16V	VAPOR VENT STACK	51V	VAPOR PIPELINE
19V	EMERGENCY SHUT DOWN	—	— ABOVE DECK PIPING
21V	HERMETIC GAUGE	- - -	- - - BELOW DECK PIPING

NOTE 2: TYPICAL RIGGING IN EACH TANK

NOTE 1: CONTAINMENT P/S

TRINITY MARINE - EX. SCF 1201-1204

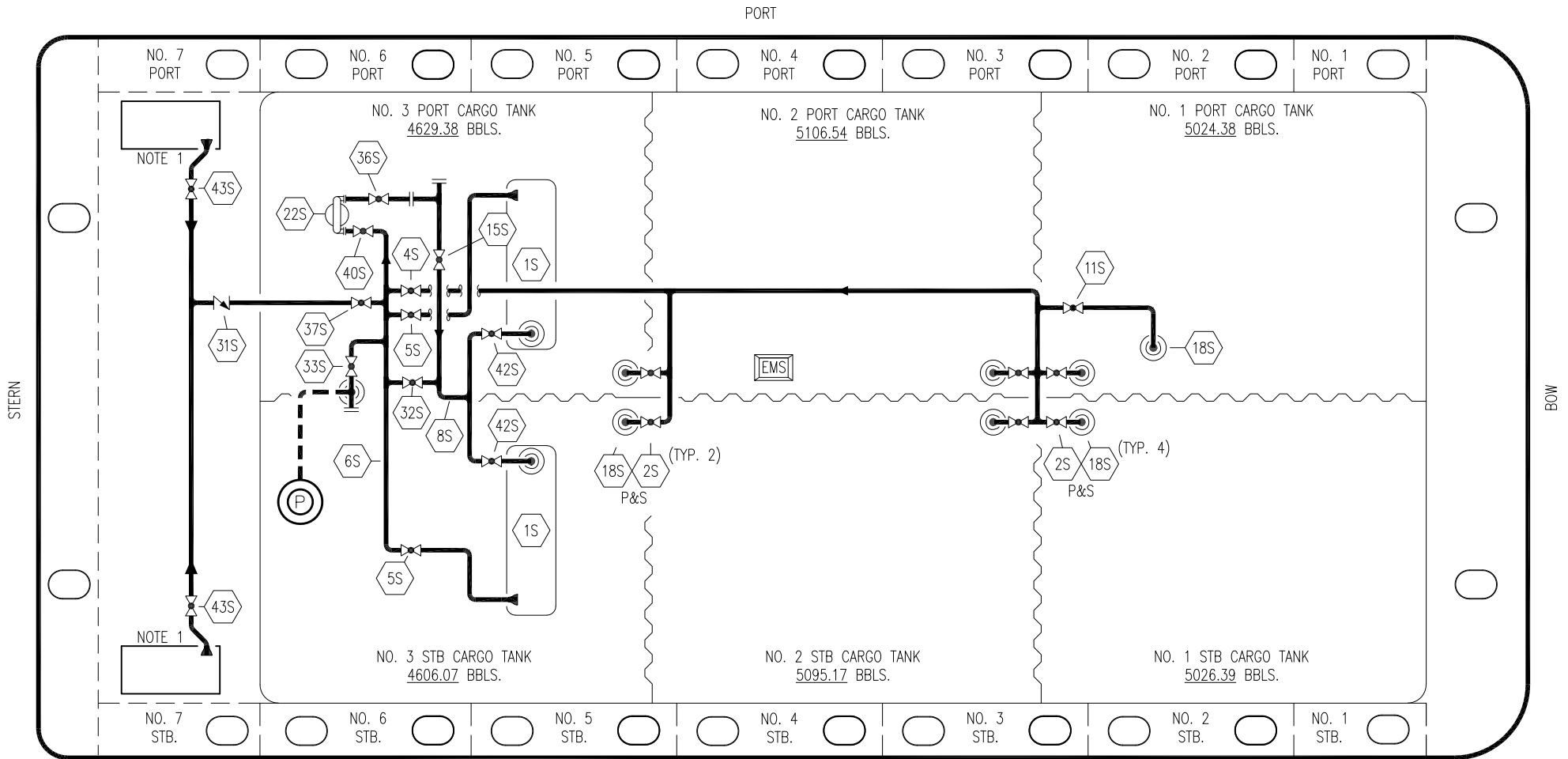
KIRBY INLAND MARINE

**VAPOR
PIPING FLOW DIAGRAM**

REV.	DATE	BY	CHK	APP	REVISION DESCRIPTION
2	09/20/22	MRV	DDA	FIX	REVISED PER CLIENT COMMENTS
1	04/03/18	WFB	DDA		REVISED WING TANK LAYOUT
0	04/28/17	WFB	DDA	OF	APPROVED

SCALE: NONE
PAGE: 2 OF 3

KIRBY 29023 REV. **2**



NO	DESCRIPTION	NO	DESCRIPTION
1S	SLOP TANK	32S	DEEP WELL PRIMER VALVE
2S	CARGO SUMP SUCTION VALVE	33S	PUMP WELL SUCTION VALVE
5S	SLOP TANK SUCTION VALVE	36S	STRIPPING PUMP DISCHARGE VALVE
6S	SUCTION HEADER PIPING	37S	BLOCK VALVE
8S	DISCHARGE HEADER PIPING	40S	HEADER SUCTION VALVE
15S	HEADER DISCHARGE VALVE	42S	SLOP TANK FILL VALVE
18S	STRIPPING DROP	43S	DRIP PAN SUCTION VALVE
22S	STRIPPING PUMP		

——— ABOVE DECK PIPING
 - - - BELOW DECK PIPING

STARBOARD

NOTE 1: CONTAINMENT P/S

TRINITY MARINE – EX. SCF 1201–1204

REV.	DATE	BY	CHK	APP	REVISION DESCRIPTION
4	09/20/22	MRV	DDA	FIX	REVISED PER CLIENT COMMENTS
3	04/03/18	WFB	DDA		REVISED WING TANK LAYOUT
2	07/28/17	WFB	DDA		REVISED PER CLIENT COMMENTS
1	07/07/17	WFB	DDA		REVISED PER CLIENT COMMENTS
0	04/28/17	WFB	DDA	OF	APPROVED

KIRBY INLAND MARINE 

**STRIPPING
PIPING FLOW DIAGRAM**

SCALE: NONE

PAGE: 3 OF 3

KIRBY 29023

REV. **4**