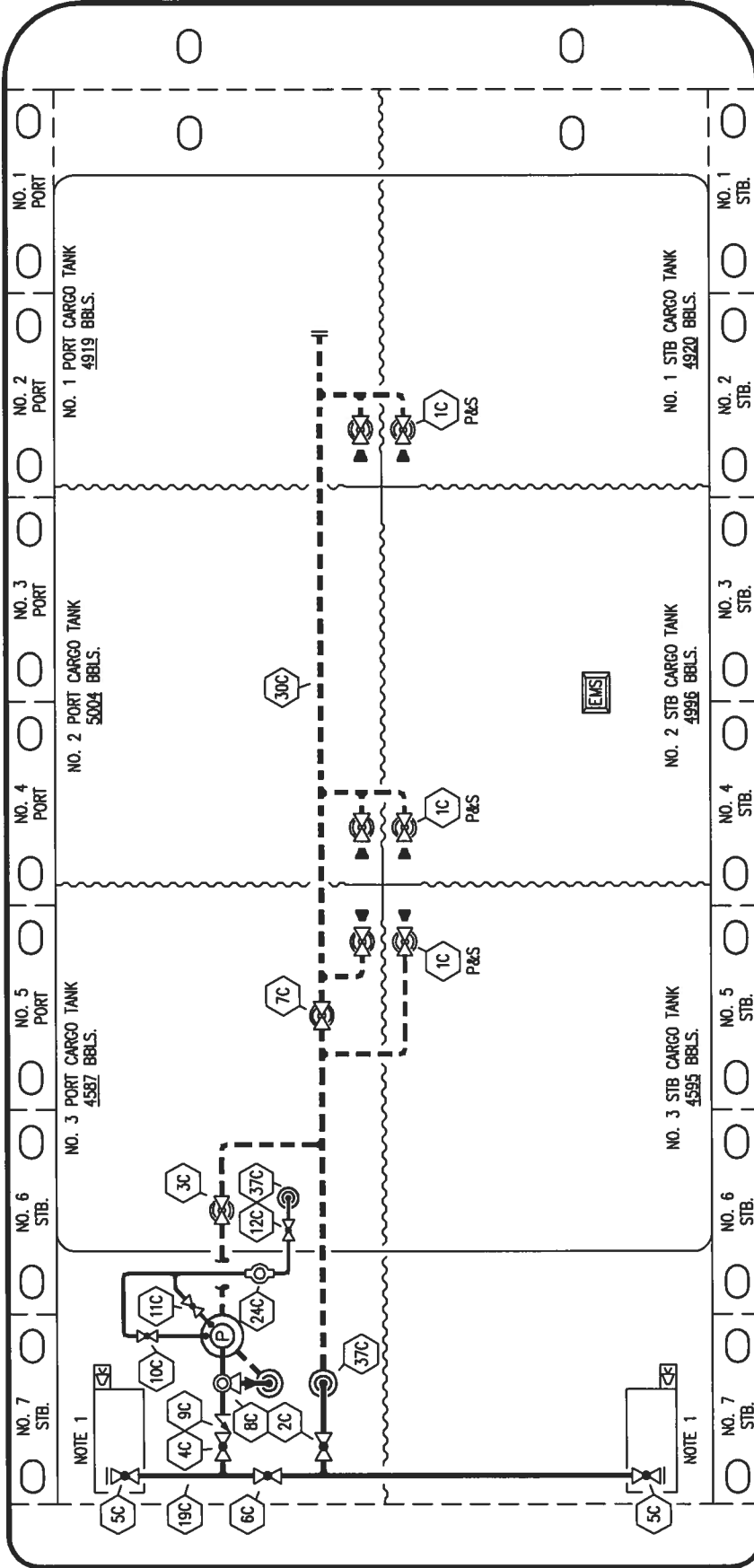


BOW

PORT



STERN

STARBOARD

- | | | | |
|-----|-----------------------|-----|---------------------------------|
| NO | DESCRIPTION | NO | DESCRIPTION |
| 1C | CARGO TANK VALVE | 11C | BLEED OFF VALVE |
| 2C | LOAD VALVE | 12C | BURP VALVE RETURN TO CARGO TANK |
| 3C | MASTER SUCTION VALVE | 19C | CARGO HEADER |
| 4C | DISCHARGE VALVE | 24C | FLOW INDICATOR |
| 5C | HEADER VALVE | 30C | CARGO PIPELINE |
| 6C | SALVAGE VALVE | 37C | CARGO DROP |
| 7C | STRIPPING BLOCK VALVE | --- | ABOVE DECK PIPING |
| 8C | RELIEF VALVE | --- | BELOW DECK PIPING |
| 9C | CHECK VALVE | | |
| 10C | BURP VALVE | | |

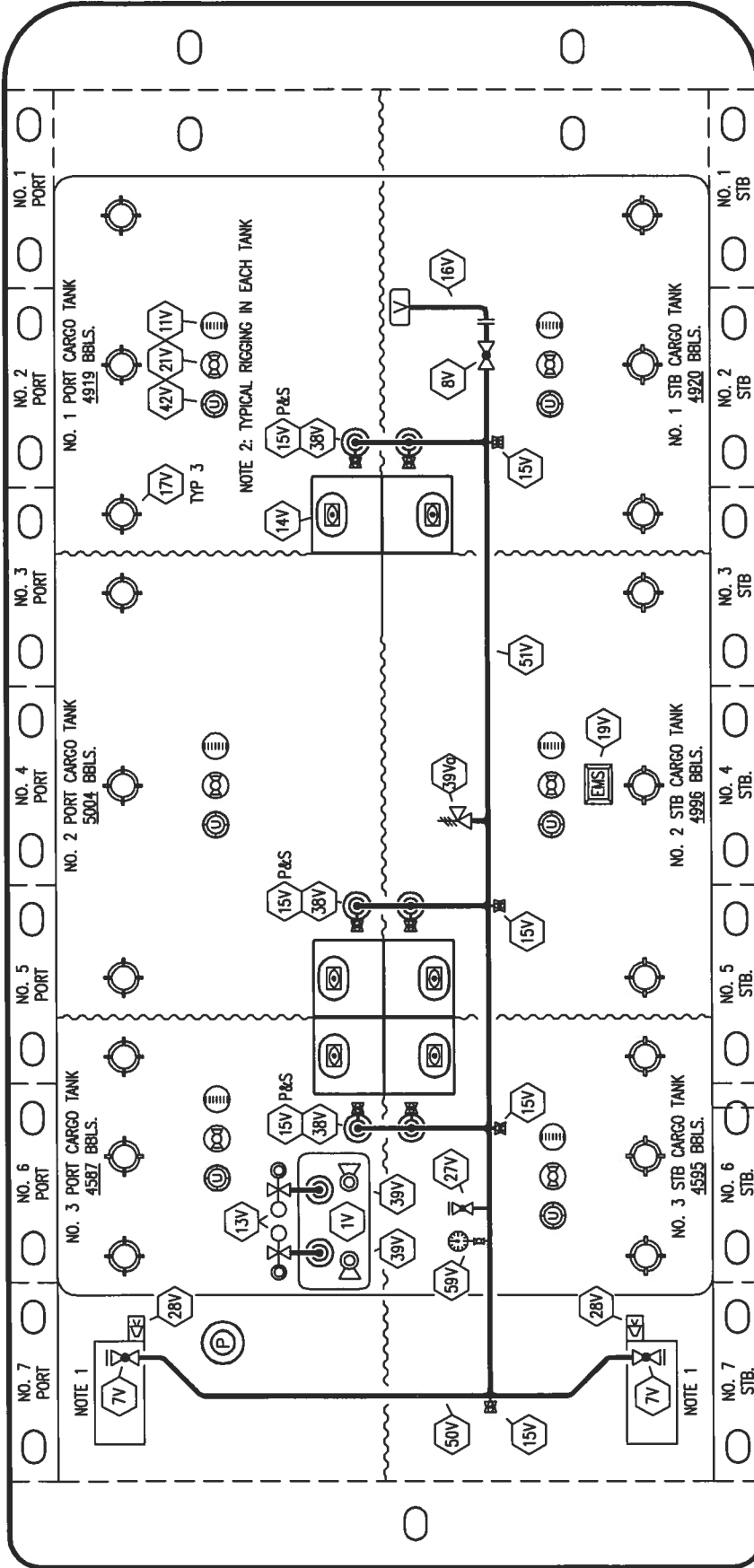
TRINITY PLATZER SHIPYARD - EX: KIRBY 30008

NOTE 1: CONTAMNMENT P/S

 KIRBY INLAND MARINE		CARGO PIPING FLOW DIAGRAM		SCALE: NONE	REV. 0
				PAGE: 1 OF 3	
REV.	DATE	BY	CHK/APP	REVISION	DESCRIPTION
0	04/19/10	DB	RB	OF	APPROVED

MOB

PORT



STERN

TRINITY PLATZER SHIPYARD - EX: KIRBY 30008



KIRBY INLAND MARINE

VAPOR

PIPING FLOW DIAGRAM

REV.	DATE	BY	CHK/APP	REVISION	DESCRIPTION
0	04/19/10	DB	RB	OF	APPROVED

SCALE: NONE
PAGE: 2 OF 3
REV. **0**
KIRBY 29014

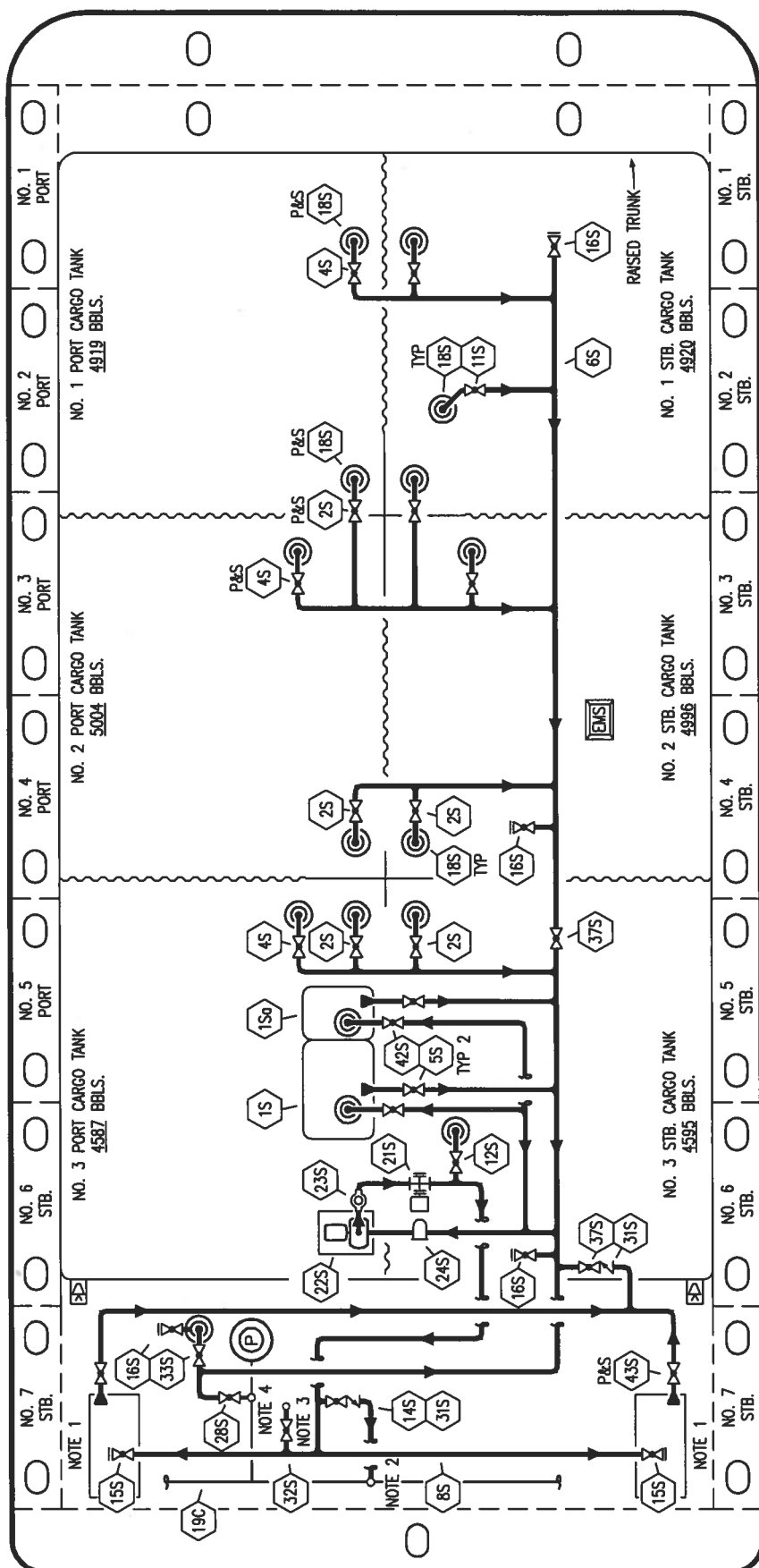
STARBOARD

NO	DESCRIPTION
1V	SLOP TANK
7V	8" HEADER VALVE
8V	8" VENT STACK VALVE
11V	1-METER GAUGE STICK
13V	SPECTACLE VALVE
14V	6" SIGHT GLASS W/ GAUGE TREE
15V	2" INSPECTION PORT
16V	8" VAPOR VENT STACK
17V	14" BUTTERWORTH
19V	EMERGENCY ENGINE SHUT DOWN
21V	2" HERMETIC GAUGE
27V	1/4" TEST VALVE CONNECTION
28V	DOCK CONNECTION ALARM
38V	8" VAPOR DROP
39V	PRESSURE/VACUUM VALVE
39V	8" PRESSURE/VACUUM VALVE
42V	8" ULLAGE HATCH
50V	8" VAPOR HEADER
51V	8" VAPOR PIPELINE
59V	PRESS/VAC GAUGE
---	ABOVE DECK PIPING

NOTE 1: CONTAINMENT P/S

BOW

PORT



STERN

- NO. 1: CONTAINMENT P/S
- NOTE 2: CONNECTS TO CARGO HEADER.
- NOTE 3: CONNECTS TO RELIEF VALVE DISCHARGE.
- NOTE 4: CONNECTS TO CARGO PUMP DISCHARGE PIPING.

STARBOARD

- NO. 37S: BLOCK VALVE
- NO. 42S: SLOP TANK FILL VALVE
- NO. 43S: DRIP PAN SUCTION VALVE
- : ABOVE DECK PIPING

- NO. 1S: PRIMARY SIDE 2500 GAL. SLOP TANK
- NO. 150: SECONDARY SIDE 500 GAL. SLOP TANK
- NO. 2S: CARGO SUMP SUCTION VALVE
- NO. 4S: CARGO TANK SUCTION VALVE
- NO. 5S: SLOP TANK SUCTION VALVE
- NO. 6S: SUCTION HEADER PIPING
- NO. 8S: DISCHARGE HEADER PIPING
- NO. 11S: LOWER CARGO PIPELINE SUCTION VALVE
- NO. 12S: RETURN TO CARGO TANK VALVE
- NO. 14S: DISCHARGE VALVE
- NO. 15S: HEADER DISCHARGE VALVE
- NO. 16S: REMOTE SUCTION CONNECTION
- NO. 18S: STRIPPING DROP
- NO. 19C: CARGO HEADER
- NO. 21S: PRIMING POT
- NO. 22S: STRIPPING PUMP
- NO. 23S: FLOW INDICATOR (SIGHT GLASS)
- NO. 24S: BASKET STRAINER
- NO. 28S: CARGO PIPING SUCTION
- NO. 31S: CHECK VALVE
- NO. 32S: PUMP WELL PRIMER VALVE
- NO. 33S: PUMP WELL SUCTION VALVE

TRINITY PLATZER SHIPYARD - EX: KIRBY 30008



KIRBY INLAND MARINE

**STRIPPING
PIPING FLOW DIAGRAM**

REV.	DATE	BY	CHK/APP	REVISION DESCRIPTION	SCALE:	PAGE:	REV.
0	04/19/10	DB	RB	OF APPROVED	NONE	3 OF 3	0

KIRBY 29014