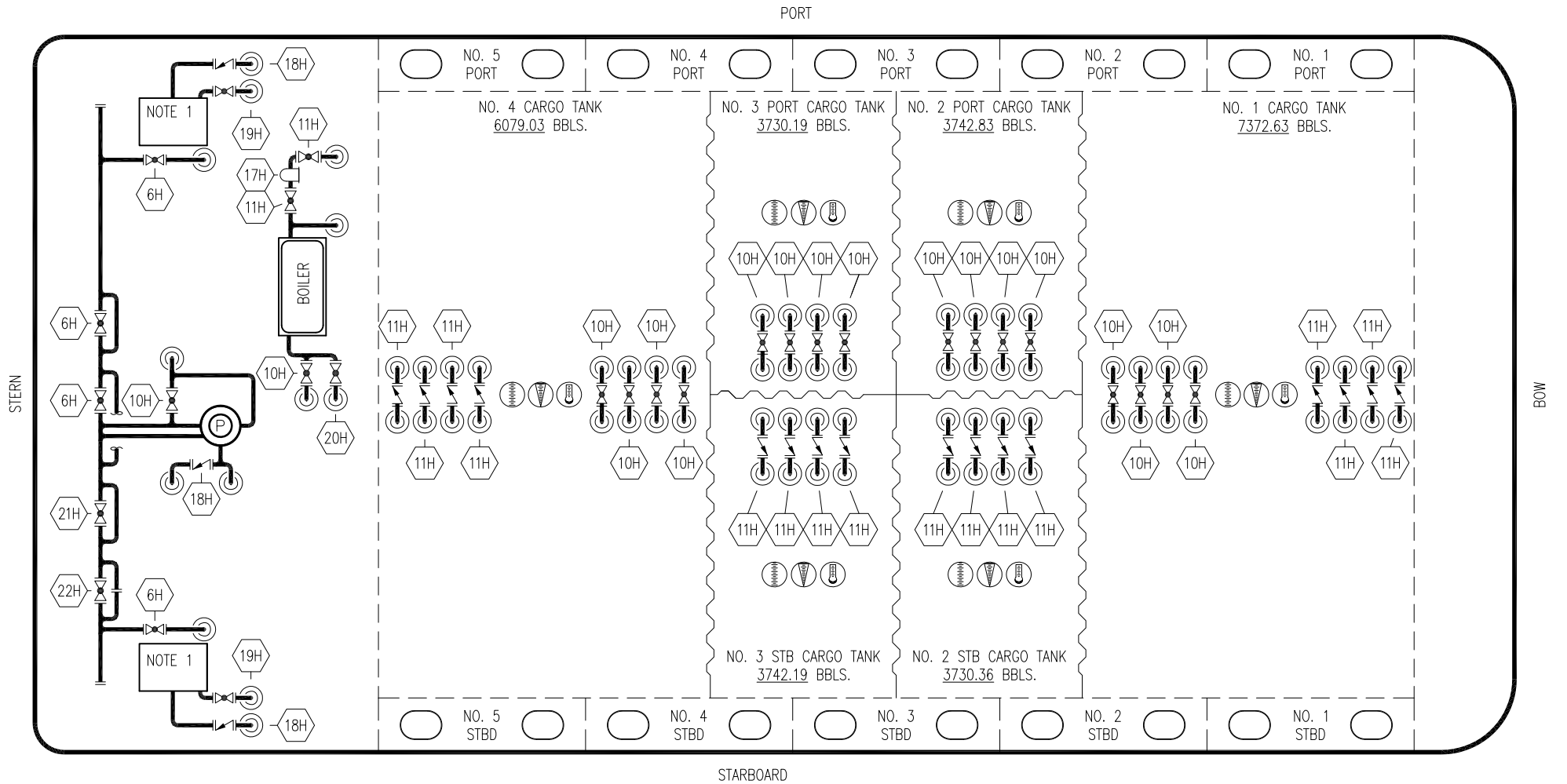


NO	DESCRIPTION	NO	DESCRIPTION	NO	DESCRIPTION	NO	DESCRIPTION
1C	CARGO TANK VALVE LOW	30C	CARGO PIPELINE	59C	DEEPWELL PRIME VALVE	—	ABOVE DECK PIPING
1Ca	CARGO TANK VALVE HIGH	31C	BYPASS VALVE	60C	AIR SEPARATOR	- - -	BELOW DECK PIPING
2C	LOAD VALVE	36C	PRESSURE GAUGE	61C	TEMPERATURE GAUGE	M	METER
3C	MASTER SUCTION VALVE	37C	CARGO DROP				
4C	PUMP DISCHARGE VALVE	38C	VENT VALVE				
4Ca	DISCHARGE TO BOOM	39C	STRAINER				
5C	CARGO HEADER VALVE	42C	BOOM MASTER VALVE				
8C	RELIEF VALVE	44C	BOOM LOCAL VALVE				
9C	CHECK VALVE	44Ca	BOOM DISCHARGE VALVE				
13C	CARGO PIPING BLOCK VALVE	53C	VACUUM PUMP				
19C	CARGO HEADER	58C	BLOCK VALVE				

NOTE 2: HOSE TO BOOM  
 NOTE 1: CONTAINMENT P/S  
 EX: HMS 302

					<b>KIRBY INLAND MARINE</b>	
					<b>CARGO</b>	
					<b>PIPING FLOW DIAGRAM</b>	
2	03/23/20	MRV	DDA		REVISED PER CLIENT COMMENTS	
1	07/11/12	DCB	DDA		ADDED BOOM PIPING	
0	04/25/12	DCB	DDA		ISSUED FOR REVIEW	
REV.	DATE	BY	CHK	APP	REVISION DESCRIPTION	

SCALE: NONE	<b>KIRBY 28751</b>	<b>2</b>
PAGE: 1 OF 2		




NO	DESCRIPTION	NO	DESCRIPTION
6H	SUPPLY HEADER VALVE	19H	DRIP PAN HOT OIL SUPPLY VALVE
10H	SUPPLY VALVE	20H	BYPASS VALVE
11H	RETURN	21H	ASPHALT SUPPLY VALVE
12H	PRESSURE REGULATOR	22H	DISCHARGE TO BOOM VALVE
13H	BY-PASS	—	ABOVE DECK PIPING
16H	ISOLATION VALVE		
17H	BASKET STRAINER		
18H	DRIP PAN HOT OIL RETURN LINE		

NOTE 1: 6 BARREL DRIP PAN

EX: HMS 302

REV.	DATE	BY	CHK	APP	REVISION DESCRIPTION
0	03/23/20	MRV	DDA		ISSUED FOR APPROVAL



**KIRBY INLAND MARINE**

**HOT OIL  
PIPING FLOW DIAGRAM**

**KIRBY 28751**

SCALE: NONE	REV. 0
PAGE: 2 of 2	