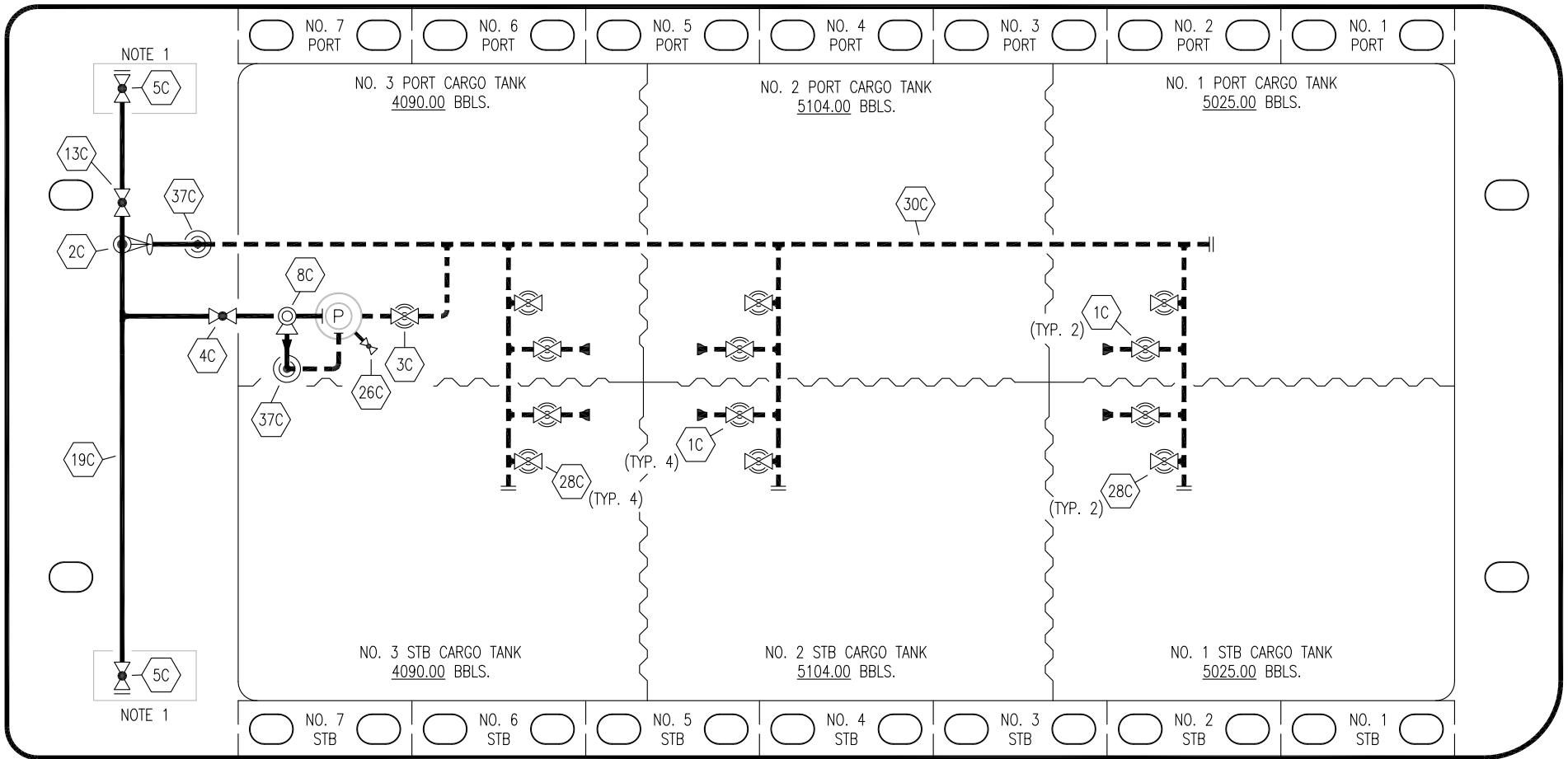


PORT

STERN

BOW

STARBOARD



NO	DESCRIPTION	NO	DESCRIPTION
1C	10" CARGO SUCTION VALVE	26C	PUMP WELL DRAIN VALVE
2C	10" LOAD VALVE	28C	10" HIGH LOAD VALVE
3C	12" MASTER SUCTION VALVE	30C	12" CARGO PIPELINE
4C	8" DISCHARGE VALVE	37C	CARGO DROP
5C	8" HEADER VALVE	—	— ABOVE DECK PIPING
8C	6" RELIEF VALVE	—	— BELOW DECK PIPING
13C	8" CARGO PIPING BLOCK VALVE		
19C	8" CARGO HEADER		

NOTE 1: CONTAINMENT P/S

TRINITY MARINE – EX. WTC 2001–2004

REV.	DATE	BY	CHK	APP	REVISION DESCRIPTION
2	04/27/18	WFB	DDA		REVISED PER CLIENT COMMENTS
1	02/16/18	WFB	DDA		REVISED PER CLIENT COMMENTS
0	11/16/16	WFB	DDA		ISSUED FOR APPROVAL

KIRBY INLAND MARINE 

**CARGO
PIPING FLOW DIAGRAM**

SCALE: NONE
PAGE: 1 OF 2

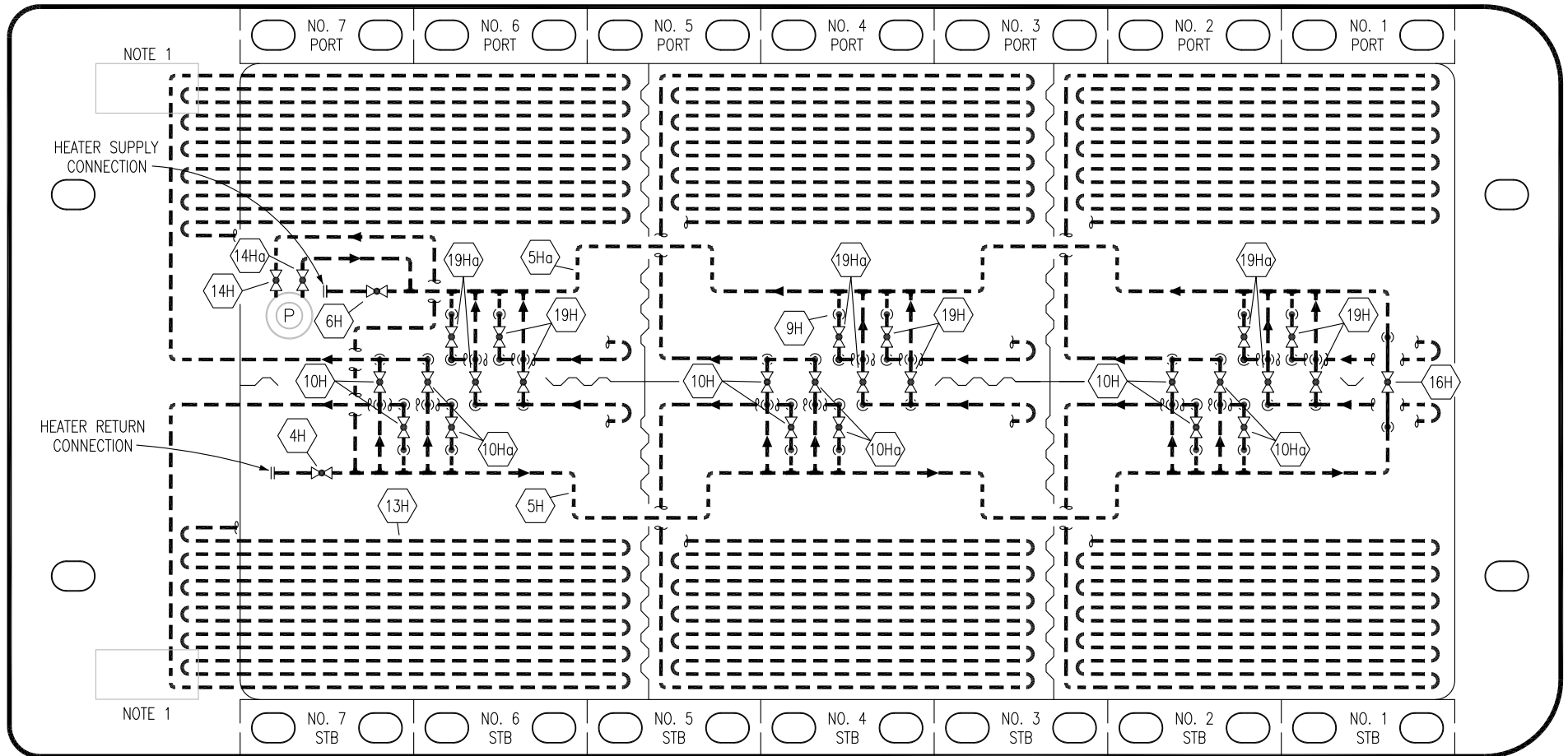
KIRBY 28746

REV. **2**

PORT

STERN

BOW



- | | | | |
|------|-------------------------|------|-------------------------------|
| NO | DESCRIPTION | NO | DESCRIPTION |
| 4H | RETURN MAIN VALVE | 16H | SUPPLY/RETURN ISOLATION VALVE |
| 5H | SUPPLY STEAM HEADER | 19H | UPPER COIL RETURN VALVE |
| 5Ha | RETURN STEAM HEADER | 19Ha | LOWER COIL RETURN VALVE |
| 6H | SUPPLY MAIN VALVE | — | — ABOVE DECK PIPING |
| 9H | STEAM (HEATING) DROP | --- | --- BELOW DECK PIPING |
| 10H | UPPER COIL SUPPLY VALVE | | |
| 10Ha | LOWER COIL SUPPLY VALVE | | |
| 13H | STEAM PIPELINE | | |
| 14H | PUMP SUPPLY VALVE | | |
| 14Ha | PUMP RETURN VALVE | | |

STARBOARD

TRINITY MARINE – EX. WTC 2001–2004

REV.	DATE	BY	CHK	APP	REVISION DESCRIPTION
2	04/27/18	WFB	DDA		REVISED PER CLIENT COMMENTS
1	02/16/18	WFB	DDA		REVISED PER CLIENT COMMENTS
0	11/16/16	WFB	DDA		ISSUED FOR APPROVAL

KIRBY INLAND MARINE 

**HEATER
PIPING FLOW DIAGRAM**

SCALE: NONE
PAGE: 2 OF 2

KIRBY 28746

REV. **2**